



Proportional Valves Catalog

Pressure Relieving, Direct Acting, Normally Closed

PRV08-DAC



OPERATION

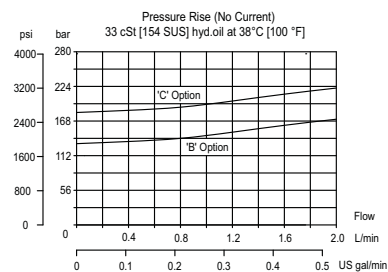
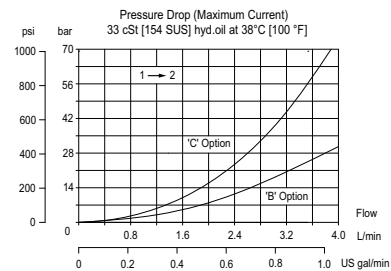
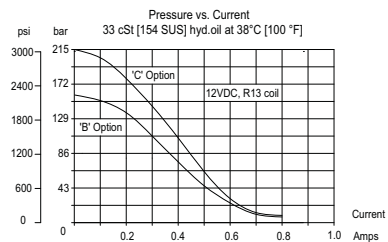
This is a direct acting, normally closed, proportional pressure relief valve.

SPECIFICATIONS

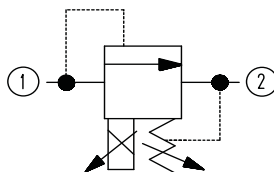
| | |
|---|---|
| Rated pressure | 215 bar [3120 psi] |
| Maximum recommended flow | 155 bar option: 3.78 l/min [1.0 US gal/min] 215 bar option: 2.84 l/min [0.75 US gal/min] |
| Hysteresis | 5% maximum |
| Threshold current | 0 A (12 VDC coil) 0 A (24 VDC coil) |
| Maximum control current | 0.8 A (12 VDC coil) 0.4 A (24 VDC coil) |
| Standard maximum setting options | 155 bar [2250 psi] 215 bar [3120 psi] |
| Cavity | SDC08-2 |
| Coil | R13 16 Watt |

Note: A PWM frequency of 50 Hz is recommended for optimal performance.

Theoretical performance



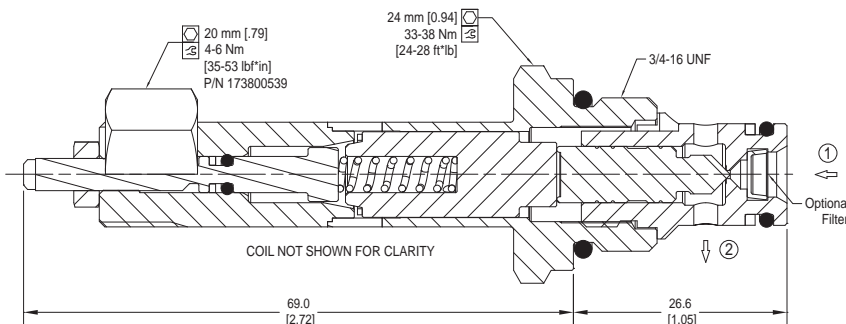
Schematic



DIMENSIONS

mm [in]

Cross-sectional view



ORDERING INFORMATION

Proportional Relief Valve, 08 Size, Direct Acting, Normally Closed

PRV08-DAC-215-C-E-R12D-AS-B-F-S6S

| Pressure Setting | |
|------------------|-----------------------------|
| Option | Setting Code (10 bar inc.) |
| B | 65-155 Bar (940-2250 psi) |
| C | 155-215 Bar (2250-3120 psi) |

| Maximum Pressure Option | |
|-------------------------|--------------------|
| Code | Max Pressure |
| B | 155 Bar (2250 psi) |
| C | 215 Bar (3120 psi) |

| Adjustment Option | |
|-------------------|-------------------|
| Code | Adjustment Option |
| E | External |

| Coil Voltage | |
|-------------------|------|
| Description | Code |
| No Coil, with nut | R00 |
| 12 VDC | R12D |
| 24 VDC | R24D |

| Coil Termination | |
|---------------------------|------|
| Type | Code |
| AMP SuperSeal 1.5 | AS |
| AMP SuperSeal with Diode | ASDB |
| Deutsch | DE |
| Desutch with Diode | DEDB |
| Flying Leads | FL |
| Flying Leads with Diode | FLDB |
| Metri-Pack 150 Type 2 | M3 |
| Metri-Pack 150 with Diode | M3DB |

| Housing and Ports | | |
|-------------------|------------------|-------------------|
| Code | Ports & Material | Body Nomenclature |
| 00 | Cartridge Only | No Body |
| 4S | #4 SAE, AL | CP08-2-4S |
| 6S | #6 SAE, AL | CP08-2-6S |
| DG-2B | 1/4 BSP, AL | SDC08-2-DG-3B |
| DG-3B | 3/8, BSP, AL | SDC08-2-DG-3B |
| S4S | #4 SAE, DUCTILE | CP08-2-S4S |
| S6S | #6 SAE, DUCTILE | CP08-2-S6S |

| Filter Option | |
|---------------|-----------|
| Code | Option |
| F | Filter |
| Omit | No Filter |

| Seal Option | | |
|-------------|----------|-----------|
| Code | Material | Seal Kits |
| B | Buna | 11191986 |
| V | Viton | 11191987 |

Proportional Valves
PRV08-DAC