



Proportional Valves Catalog

Relief, Pilot Operated, Normally Closed

PRV10-POC



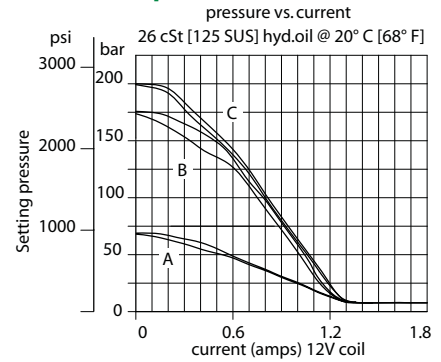
OPERATION

This is a normally-closed, pilot-operated, proportional relief valve.

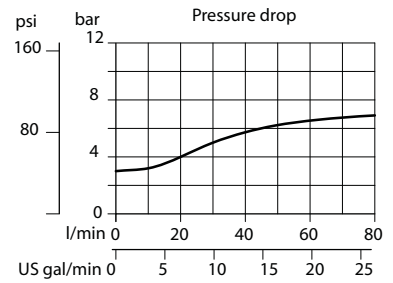
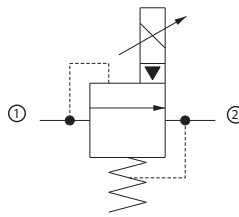
SPECIFICATIONS

Rated pressure	250 bar [3600 psi]
Rated flow	76 l/min [20 US gal/min]
Weight	0.53 kg [1.17 lb]
Hysteresis	10% maximum
Threshold current	0 A (12 VDC coil) 0 A (24 VDC coil)
Maximum control current	1.4 A (12 VDC coil) 0.7 A (24 VDC coil)
Cavity	SDC10-2
Standard Coil	M19P 22 Watt

Theoretical performance



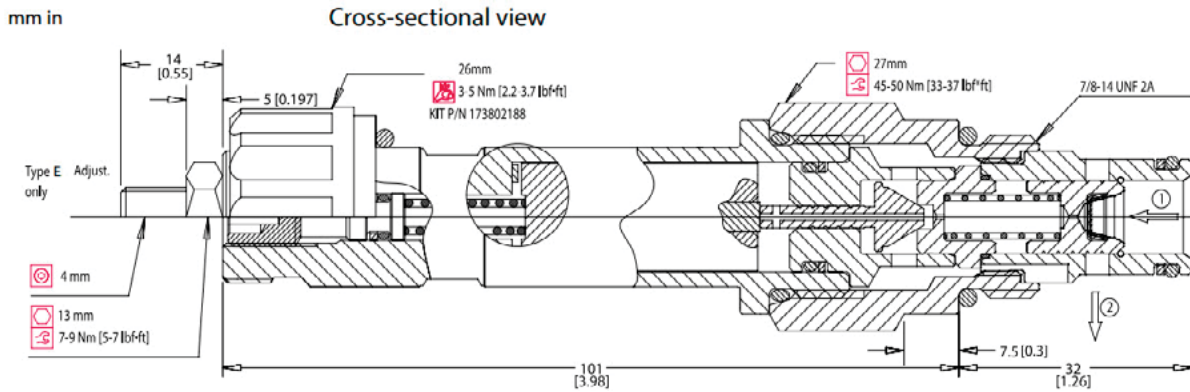
Schematic



DIMENSIONS

mm [in]

Cross-sectional view



ORDERING INFORMATION

PRV10 - POC* - 215 - C - 12D - DE - E - B - 00

Proportional Pressure Relieving Valve, Pilot Operated, Normally Closed, 10 Size Cavity

Code	Crack Pressure (Standard Settings)
55	55 bar [800 psi] Range A
135	135 bar 1960 B [psi] Range B
215	215 bar 3120 C [psi] Range C

Code	Pressure Range
A	25 - 65 bar [360 - 940 psi]
B	65 - 155 bar [940-2250 psi]
C	155 - 215 bar [2250-3120 psi]

Code	Coil Voltage
00	No Coil
12D	12V DC
24D	24 V DC

Code	Coil Termination
00	No Coil
AJ	Amp Junior
DE	Deutsch
DN	DIN 43650

Code	Adjustment Options
E	External
F	Tamper Resistant
H	Hidden

Code	Body & Ports	Body Nomenclature
00	No housing	No Body
6S	Al, #8 SAE	CP10-2-6S
8S	Al, #8 SAE	CP10-2-8S
DG3B	Al, 3/8 BSP	SDC10-2-DG3B
DG4B	Al, 1/2 BSP	SDC10-2-DG4B
	Other housings available	

Code	Seal	Seal Kit
B	Buna-N	354000719
V	Viton	354000819

*PRV10-1S2 is the same valve as PRV10-POC, with the following differences:
1) The -1S2 uses the M19P-12L or M19P-24L coil (low power)
2) the pressure is set at a higher flow.

The 1S2 is designed specifically for fan drive applications where the valve is in a hot ambient engine compartment.

Proportional Valves
PRV10-POC