



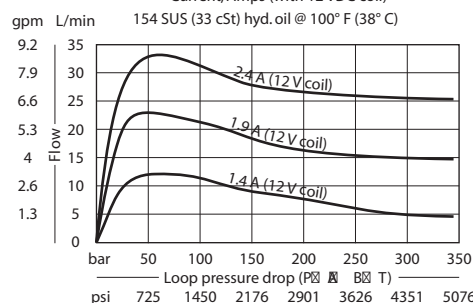
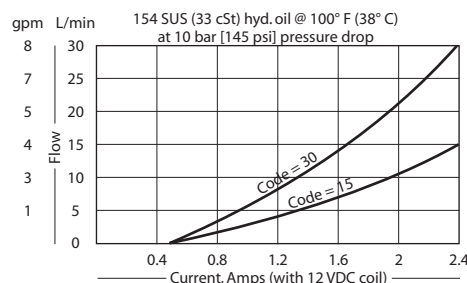
**OPERATION**

This valve is a proportional directional control.

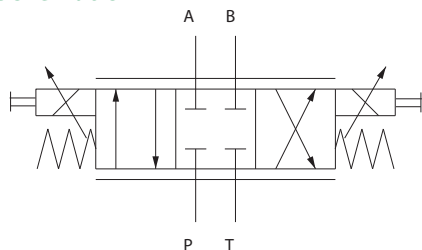
**SPECIFICATIONS**

<b>Rated pressure</b>	350 bar [5075 psi]
<b>Rated flow at 10 bar [145 psi]</b>	30 l/min [8 US gal/min]
<b>Weight</b>	2.40 kg [5.29 lb]
<b>Hysteresis</b>	6% maximum
<b>Threshold current</b>	0.5 A (12 VDC coil) 0.25 A (24 VDC coil)
<b>Maximum control current</b>	2.4 A (12 VDC coil) 1.2 A (24 VDC coil)
<b>Cavity</b>	ISO D03
<b>Standard Coil</b>	PD03 40 Watt
<b>Coil nut</b>	158-8005

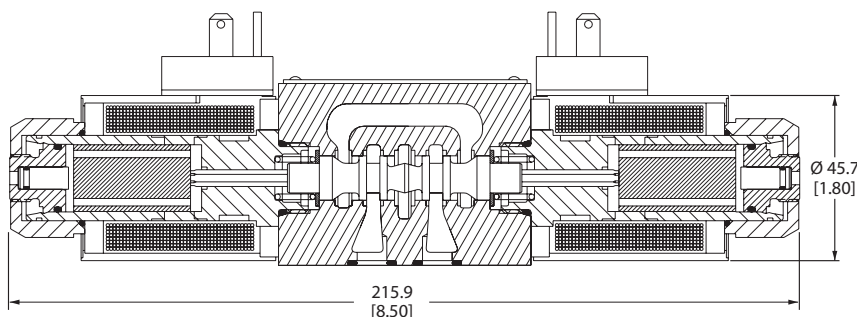
**Theoretical performance**



**Schematic**



Cross-sectional view



**DIMENSIONS**

mm [in]

**ORDERING INFORMATION**

PDCV03-3Z11/15-12-E1-8S

**Subplate option**

- OMIT = No subplate
- 8S = Aluminum, #8 SAE ports
- S8S = Steel, #8 SAE ports

**Voltage**

- 12 = 12 VDC
- 24 = 24 VDC

**Nominal flow rate**

- 15 = 15 L/min [4.0 gpm]
- 30 = 30 L/min [7.9 gpm]

**Termination**

- E1 = DIN 43650
- E3 = Amp Jr.
- E8 = Lead wires
- E12 = Deutsch
- E14 = Dual spade

**Seal Kit**

- B = Buna-N Seal kit 158-8007
- V = Viton Seal kit 158-8062

Note: All internal seals are viton

**Bolt Kit**

- #10-24 Thd. 158-8064
- M5 Thd. 158-8026

Proportional Valves  
PDCV03-3Z11