



Relief Valves Catalog

Cross-Over

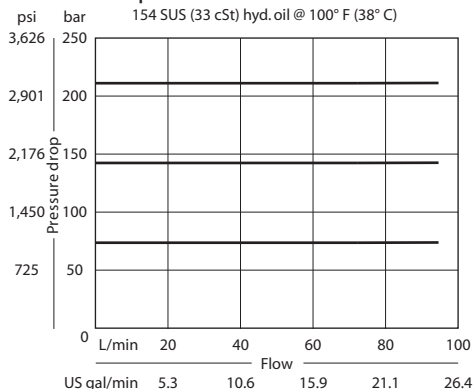
CP220-1

OPERATION

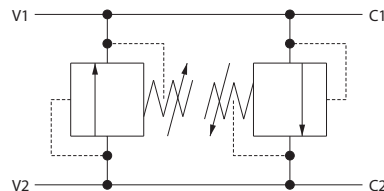
This valve is an inline cross relief. It uses two CP200-1 differential area relief valves.

SPECIFICATIONS

Theoretical performance



Schematic



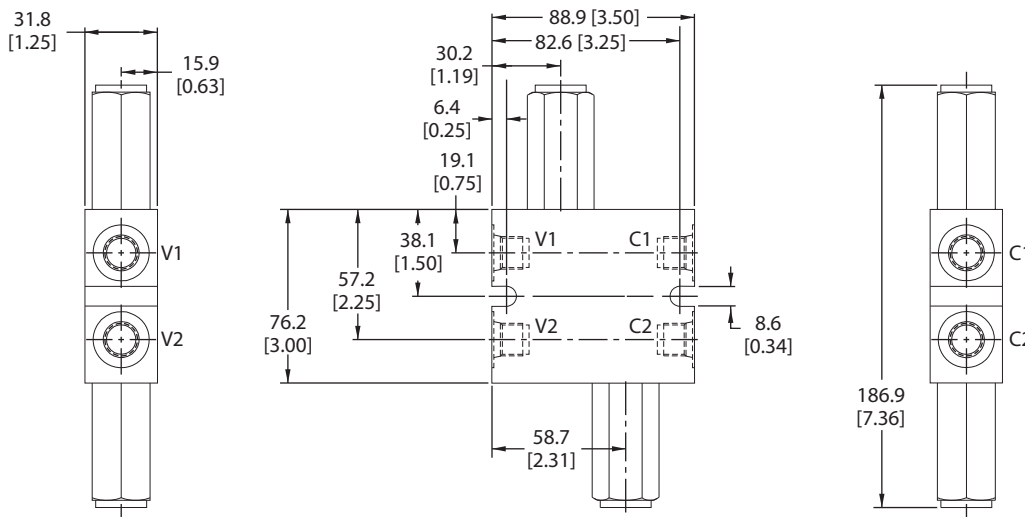
Specifications

Rated pressure	250 bar [3600 psi]
Rated flow	75 l/min [20 US gal/min]
Weight	0.82 kg [1.80 lb]
Cavity	none

DIMENSIONS

mm [in]

Cross-sectional view



ORDERING INFORMATION

CP220 - 1 - 8S - B-0-A-C-150

Housing and ports

3B	=	Al, 3/8 BSP
4B	=	Al, 1/2 BSP
6S	=	Al, #6 SAE
8S	=	Al, #8 SAE

Other housings available

Housing P/N

221743
221744
220216
220217

Seals

B	=	Buna-N
V	=	Viton

Adjustment option

A	=	Internal
E	=	External
F	=	Tamper resistant
K	=	Knob

Seal kit	120072
	120161

Crack pressure

Code x 10 = psi
Example: 150 = 1500 psi

Pressure range

A	=	7-55	[100-800]
Standard		28	[400]
B	=	17-138	[250-2000]
Standard		69	[1000]
C	=	41-248	[600-3600]
Standard		103	[1500]