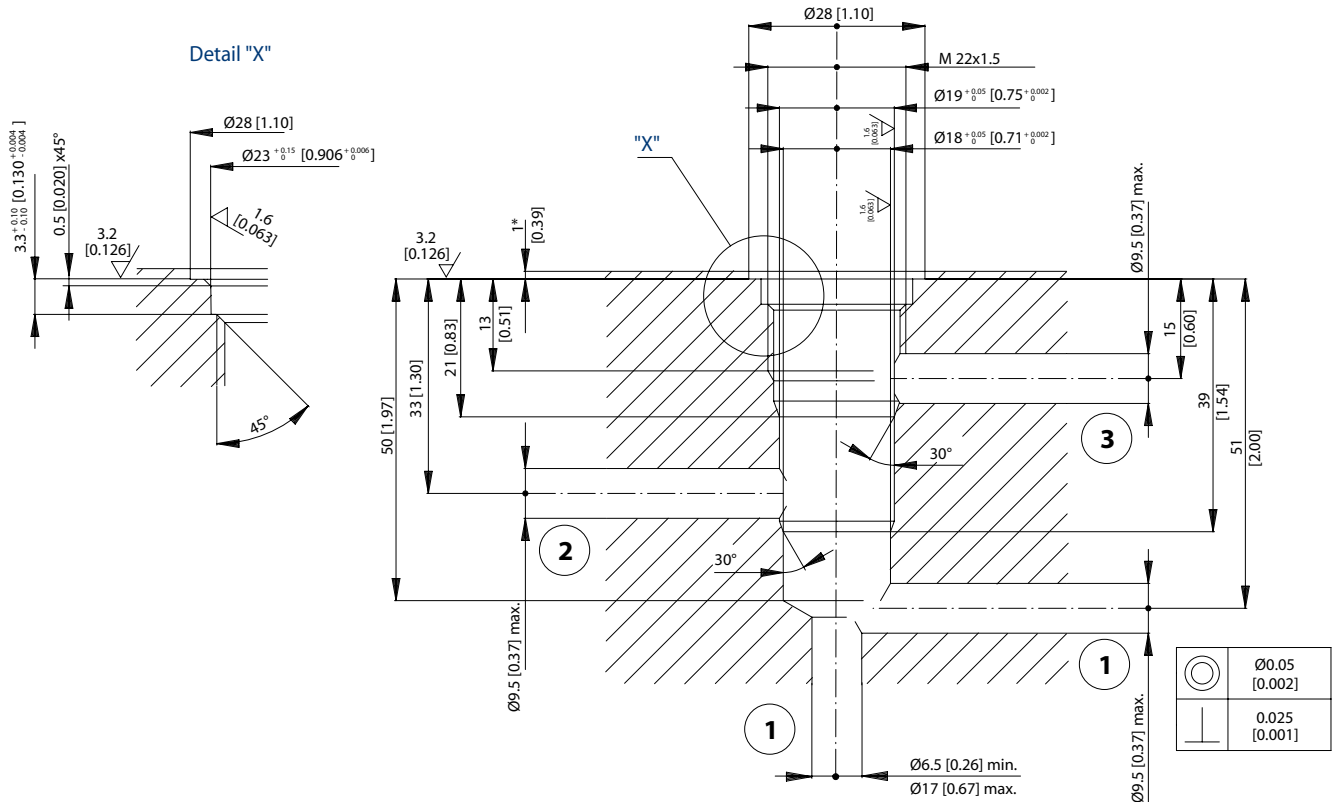


Dimensions



CA - Cavities  
NCS06/3

Form tools

	Model code	Material number
<b>Finishing tool</b>	NCS-06-3-FT	11027160
<b>Roughing tool</b>	NCS-06-3-RT	11027161

Housings

Order Code	Description	Ports	Page
NCS06/3-DL-1/2	Alum. Hsg., 2 Cavities w/#1 Ports Conn.	1/2 BSP	<a href="#">HS - 40</a>
NCS06/3-DL-3/8	Alum. Hsg., 2 Cavities w/#1 Ports Conn.	3/8 BSP	<a href="#">HS - 47</a>
NCS06/3-DL-6S	Alum. Hsg., 2 Cavities w/#1 Ports Conn.	SAE #6	<a href="#">HS - 47</a>
NCS06/3-DL-8S	Alum. Hsg., 2 Cavities w/#1 Ports Conn.	SAE #8	<a href="#">HS - 40</a>
NCS06/3-LD-6S	Aluminum Housing, No Port #1	SAE #6	<a href="#">HS - 41</a>
NCS06/3-LD-8S	Aluminum Housing, No Port #1	SAE #8	<a href="#">HS - 42</a>
NCS06/3-SE-1/2	Aluminum Housing	1/2 BSP	<a href="#">HS - 43</a>
NCS06/3-SE-3/8	Aluminum Housing	3/8 BSP	<a href="#">HS - 44</a>
NCS06/3-SE-6S	Aluminum Housing	SAE #6	<a href="#">HS - 44</a>
NCS06/3-SE-8S	Aluminum Housing	SAE #8	<a href="#">HS - 43</a>
NCS06/3-SI-1/2	Aluminum Housing, Two #1 Ports	1/2 BSP	<a href="#">HS - 46</a>
NCS06/3-SI-3/8	Aluminum Housing, Two #1 Ports	3/8 BSP	<a href="#">HS - 45</a>
NCS06/3-SI-6S	Aluminum Housing, Two #1 Ports	SAE #6	<a href="#">HS - 45</a>
NCS06/3-SI-8S	Aluminum Housing, Two #1 Ports	SAE #8	<a href="#">HS - 46</a>