

OPERATION

This is an 08-size, 3-Position, 4-Way, spool type solenoid valve. When de-energized, the HSV08-34-02 is closed center, blocking all flow. When coil S1 is energized, the spool shifts to allow flow from port 3 to port 4, and from port 2 to 1. When coil S2 is energized, the spool shifts to allow flow from port 3 to port 2, and from port 4 to port 1. Follow the "Operating Envelope" limits to ensure shifting of the valve during operation. The HSV08-34-02 comes standard with a one-direction, push-pin manual override. When the manual override is pushed, the spool shifts following the logic of energizing S2.



Shown with Standard Coils,
Deutsch Connectors

APPLICATIONS

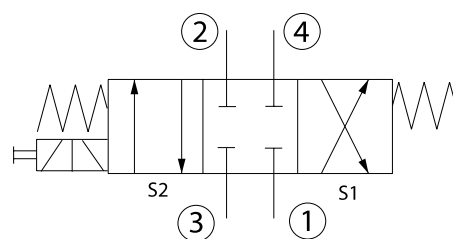
These valves are primarily used in mobile and industrial applications for controlling the direction of the flow in a circuit. Solenoid spool-type valves are direct acting and respond quickly to coil voltage input. Spool valves will have some leakage due to spool clearance, so if your application requires no leakage at the working port(s), apply a low leakage poppet valve(s), like PO check valve, counterbalance valve, etc., in addition to this solenoid valve. Port 1 is not intended for use as inlet (Tank only).

SPECIFICATIONS

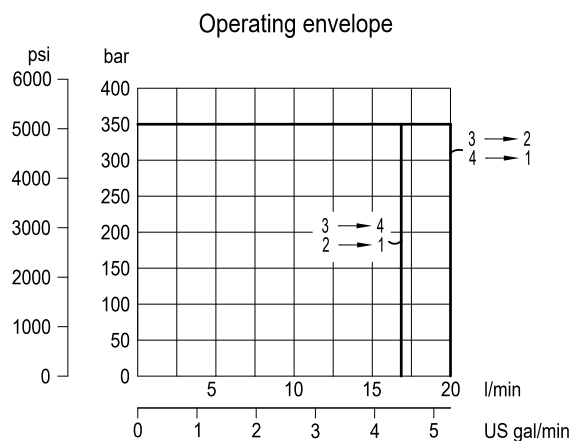
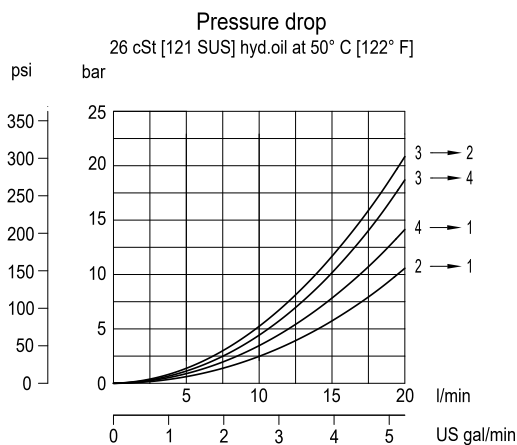
Rated pressure*	350 bar [5075 psi]
Rated flow at 7 bar [100 psi]	11 l/min [2.91 US gal/min]
Weight	0.55 kg [1.21 lb]
Cavity	SDC08-4
Standard Coil	M13 20 Watt
Robust Coil	R13 16 Watt Robust Nut P/N 173800539 (no coil O-rings needed)

* Rated Pressure based on NFPA fatigue test standards (at 1 Million Cycles).

SCHEMATIC



PERFORMANCE CURVES





Solenoid Valves Catalog

4-Way, 3-Position Spool

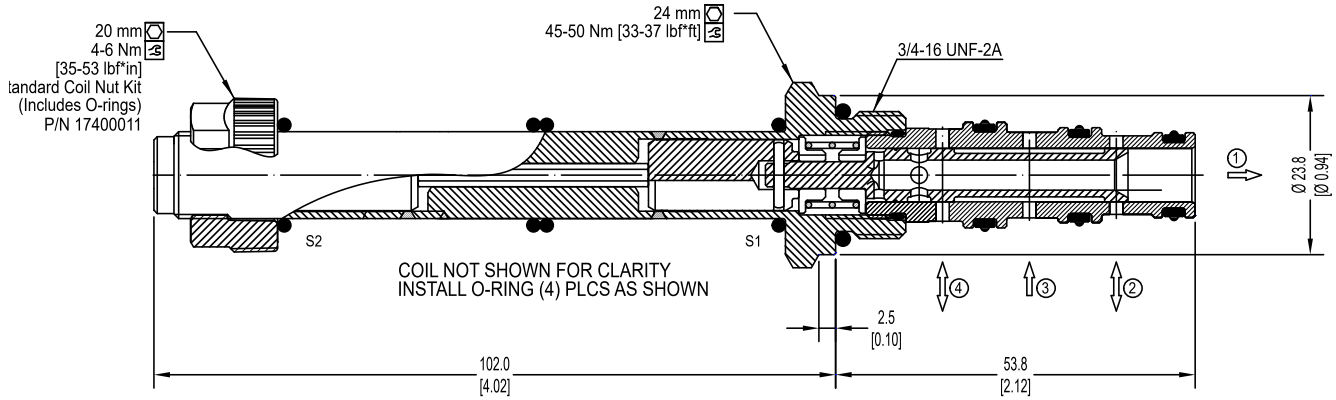
HSV08-34-02



DIMENSIONS

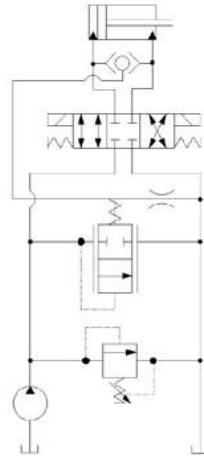
mm [in]

Cross-sectional view

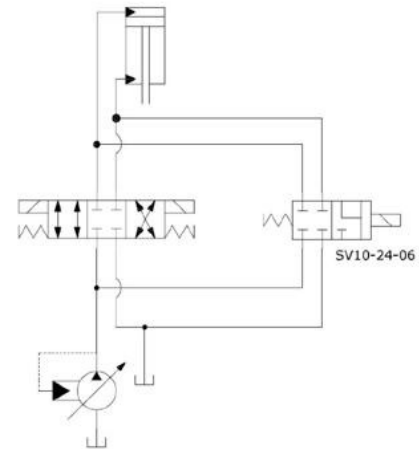


EXAMPLE CIRCUITS

Double Acting Cylinder with Unloading Valve



Fourth Position Float



ORDERING INFORMATION

HSV08 - 34 - 02 - 12D - DE - PN - P - 00

High Pressure Solenoid Valve 3 position, 4 way, 08-Size.			Housings		
Coil Voltage			Code	Ports & Material	Body Nomenclature
Description	Standard Coil Code	Robust Coil Code	00	Cartridge only	No Body
No Coil	00	R00	S3B	3/8 BSP, Steel	CP08-4-S3B
12 VDC	12D	R12D	S6S	#6 SAE, Steel	CP08-4-S6S
24 VDC	24D	R24D	*** Aluminum bodies available for lower pressure applications [less than 210 bar (3000 psi)]. Please consult factory for details.		
Coil Termination			Seal Option		
Description	Standard Coil Code	IP Rating	Code	Seal Material	Seal kit
No Coil	00	-	P	Polyurethane Single Seal	11167316
Flying Lead	FL	IP65	Manual Overrides		
Deutsch	DE	IP69K	Code	Description	
AMP SuperSeal 1.5	AS	IP67	PN	Push Pin (standard)	
AMP SuperSeal with Diode	ASD	IP67			
Deutsch with Diode	DED	IP69K			
Flying Lead with Diode	FLD	IP65			
DIN 43650	DN	IP65			

SV - Solenoid Valves
HSV08-34-02