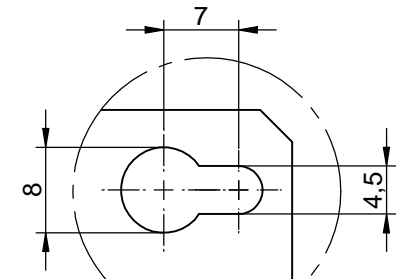
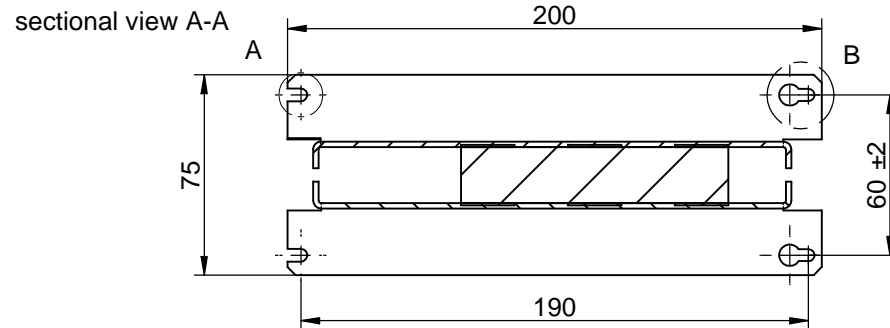


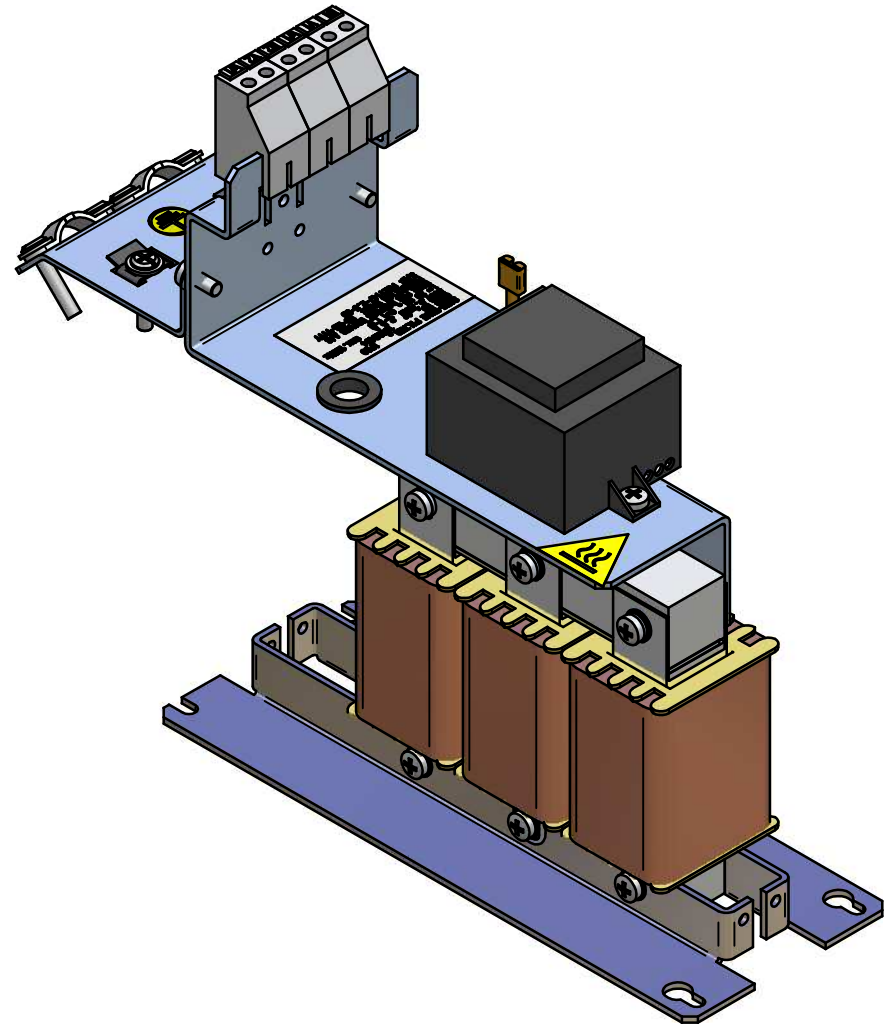
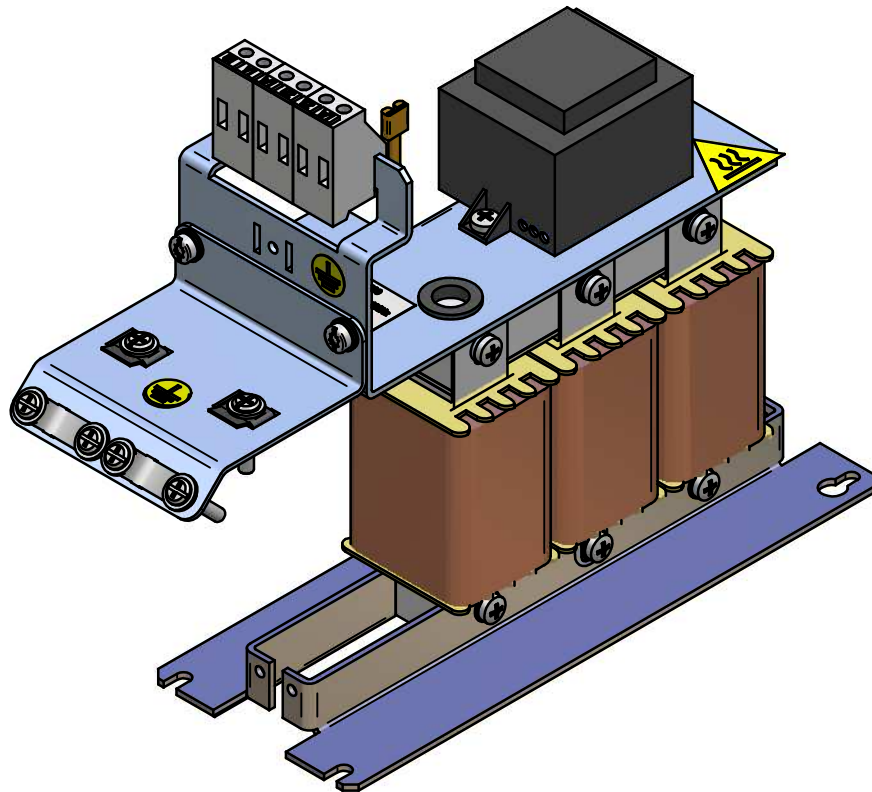
detail A



detail B



*This document may not be duplicated without our written authorization. To not be handed over to, copied or used by third party. Two- or three-dimensional reproduction of contents to be authorized.				Dimensions without tolerance statement against DIN ISO 13920:		projection	scale: 1:2	DIN A3	weight: 2,5 kg
				date	name		description: sine wave filter 2,5A L=29mH Cy=1µF		
				30.08.05	Mestermann				
				che.	03.09.05	Siltz	130B2404 FS21147-2,5-99		
E	commiss. added housing modified	24.01.2008	Mis.	DIN					
D	dimensions added	09.11.2007	Ger.						
C	cable plate holes, housing fitting	14.07.2006	Mis.						
B	cable fixing added at P100 change	4.07.2006	Mis.						
A	bevel / parts selected	22.11.2006	Mis.						
num.	modification	date	name	dev.for:	dev.by:	CAD-File 27mh-2-5a-100-vor-schlag2a			



*This document may not be duplicated without our written authorization. To not be handed over to, copied or used by third party. Two - or three-dimensional reproduction of contents to be authorized.				Dimensions without tolerance statement against DIN ISO 15820b	projection 	scale: 1:2	DIN A4	weight: 2,5	kg	
				date	name	description:				
				plot	30.08.05	Mestermann	sine wave filter			
				che.	03.09.05	Stitz	2,5A L=29mH Cy=1µF			
E.	comments added housing modified	24.01.2008	Mes.	DIN			130B2404			
D.	comments / dimensions added	09.11.2007	Ger.				FS21147-2,5-99			
C.	cable plate holes housing fixing	14.07.2006	Mes.							
B.	cable fixing added at IP00 design	14.07.2006	Mes.							
A.	bevel / parts adapted	22.11.2005	Mes.							
num	modification	date	name	dev.for:	dev.by:		CAD-File 29mh-2-5a-100-vorschlag2.dxf			