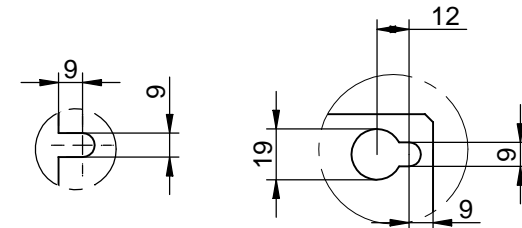
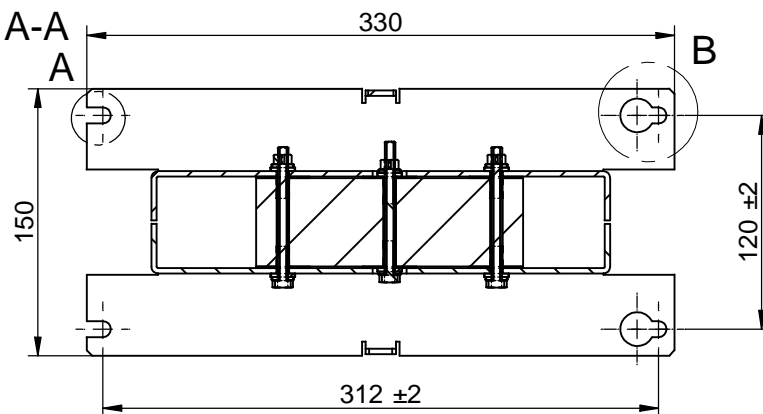


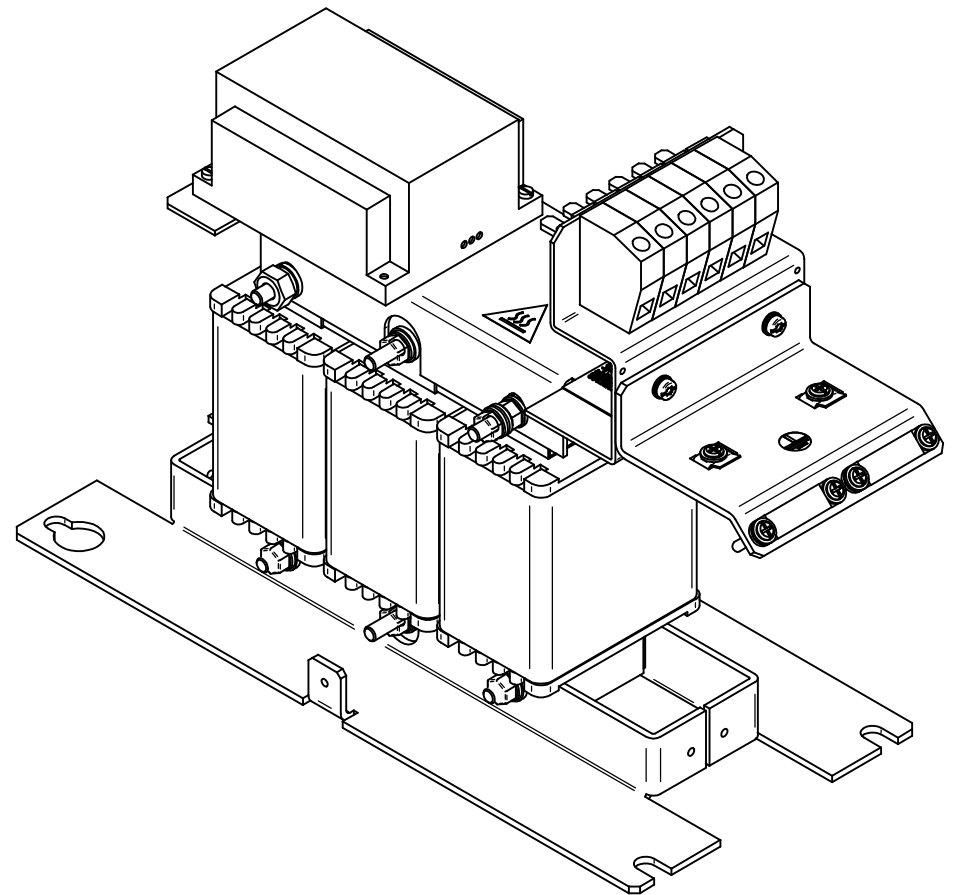
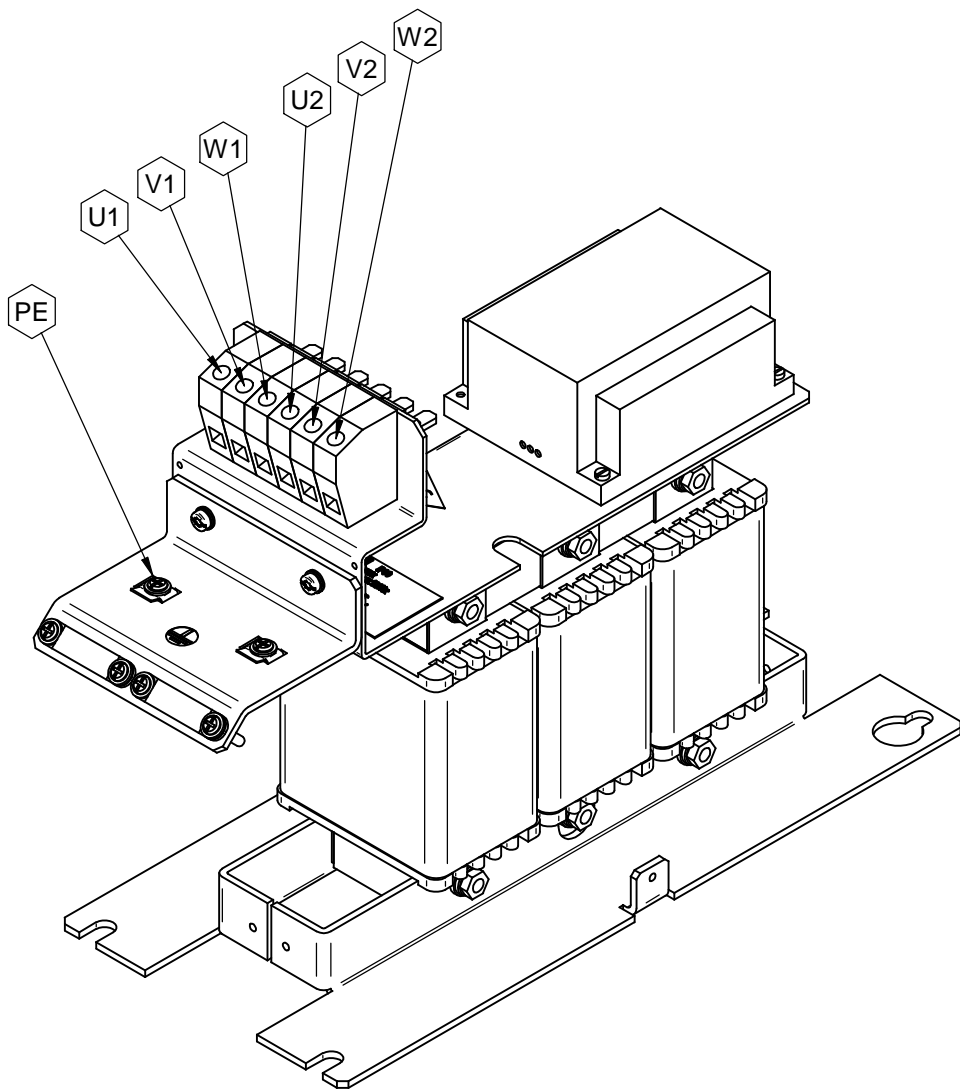
sectional view A-A



detail A

detail B

<small>*This document may not be duplicated without our written authorization. To not be handed over to, copied or used by third party. Two- or three-dimensional reproduction of contents to be authorized.</small>				<small>Dimensions without tolerance statement against DIN ISO 130205</small>		projection 	scale: 1:5 DIN A3 weight: 14.4 kg
H	Modified after noise problem	03.03.2008	Ger.		date	name	description: sine wave filter 24A L=2,4mH Cy=10µF 130B2412 FS21147-24-99
G	cable mounting 2 mm reduced	24.01.2008	Mes.	plot	07.12.2005	Mestermann	
F	fil in the corner added	07.01.2008	Mes.	che.	08.12.2005	Siltz	
E	ring pins housing cable mounting	10.04.2007	Mes.	DIN			
D	housing changed	15.01.2007	Mes.				
C	stamp altered	21.08.2006	Mes.				
B	cable mounting exchanged	17.07.2006	Mes.				
A	chamber added	14.12.2005	Mes.				
num.	modification	date	page	dev. for:	dev. by:	CAD-File 2_2mH_24A-100.dft	



<small>"This document may not be duplicated without our written authorization. To not be treated over its copied or used by third party. Two- or three-dimensional reproduction of contents to be authorized."</small>				<small>Dimensions without tolerance statement against DIN ISO 13920</small>		projection 	scale: 1:5 DIN A4 weight: 14,4 kg
H	Modified after noise problem	03.03.2008	Ger.		date	name	description: sine wave filter 24A L=2,4mH Cy=10µF 130B2412 FS21147-24-99
G	cable mounting 2 mm reduced	24.01.2008	Mes.	plot	07.12.2005	Mestermann	
F	tab in the corner added	07.01.2008	Mes.	che.	08.12.2005	Slitz	
E	bring pins housing cable mounting	10.04.2007	Mes.	DIN			
D	housing changed	15.01.2007	Mes.				
C	stamp altered	01.08.2006	Mes.				
B	cable mounting (rechanged)	17.07.2006	Mes.				
A	chamber added	14.12.2005	Mes.				
num.	modification	date	page	dev. for:	dev. by:	CAD-File 2_2mh_24a-100.dft	