

2pcs earth screws M6x16 (with lockwasher and washer)

additional informations:
 filter colour : RAL7001
 filter weight : 7,8kg
 cable clamp : 2x 195N3206

16mm² terminal

label:

VLT MCC 102 du/dt FILTER
 www.danfoss.com

Part no. 6430 Nordborg, Denmark
 MADE IN GERMANY

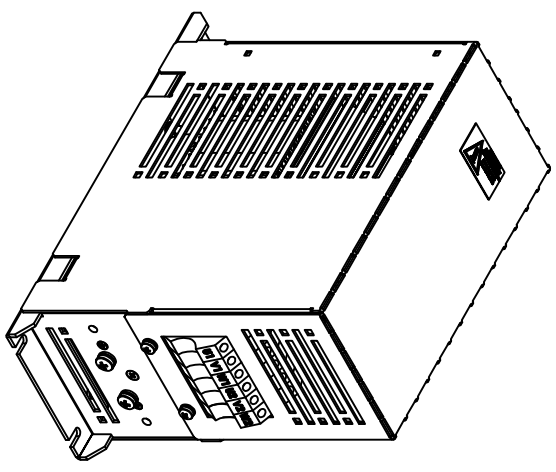
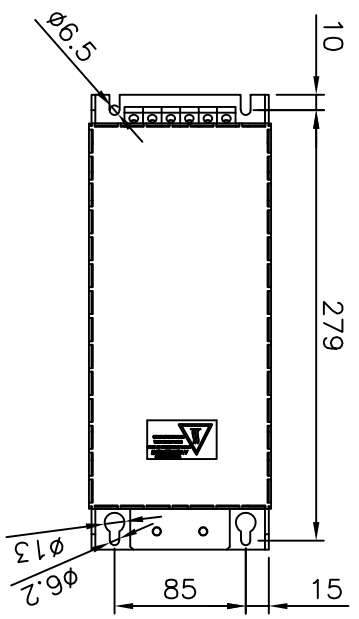
T/C: MCC10244001ME20B S/N: 000169-296
 P/N: 130B2936 L390H
 3x 240-690V - 50/60Hz (max 100Hz) Cir=10Hz
 3x 44A@440V - 40A@500V 34A@600V 27A@690V Isov=4Hz
 Chassis/IP20 Temp: 45°C/113°F Weight: 7.8kg
 Tightening torque terminal: 2.0-4.0Nm only CU

130B293600169-296

Use only with a Type 1 or Type 2 SPD overvoltage control device

LISTED E 219022 B 1406032.1 FA-Nr.: 000000
 See manual for UL-requirements

EN 61568 **CE**



©20.07.16 | Sat./Fre. | Typschabel updated, Danfoss Postadress included
 d18.02.15 | Fre./Eiers | new type
 date name amendment

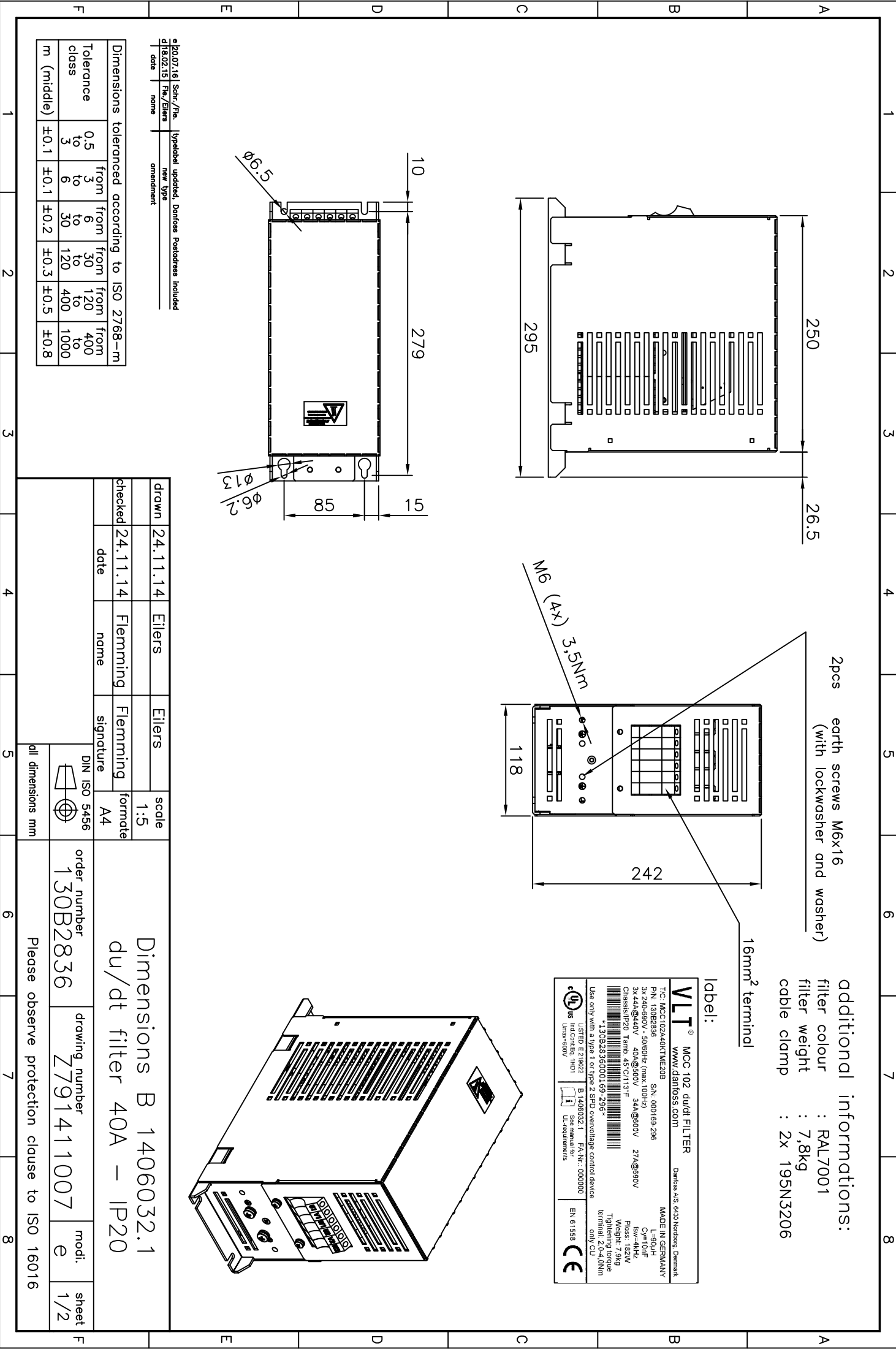
Dimensions tolerated according to ISO 2768-m	
Tolerance class	0.5 to 3
from 3 to 6	from 6 to 30
from 30 to 120	from 120 to 400
from 400 to 1000	
m (middle)	±0.1
	±0.1
	±0.2
	±0.3
	±0.5
	±0.8

drawn	date	name	signature	scale	format
24.11.14	24.11.14	Eilers	Eilers	1:5	A4
		Flemming	Flemming		

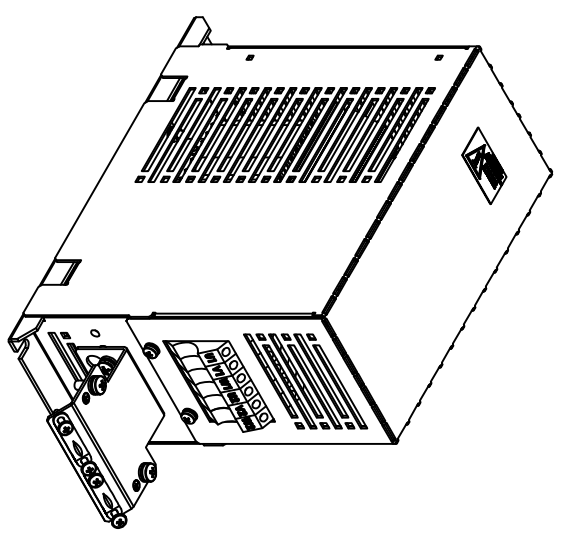
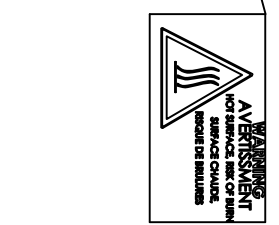
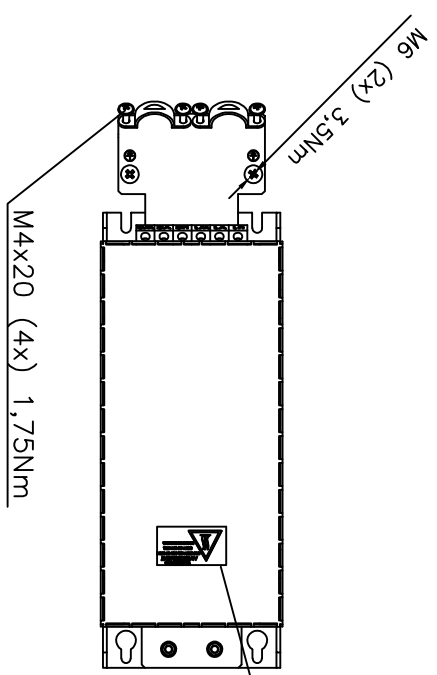
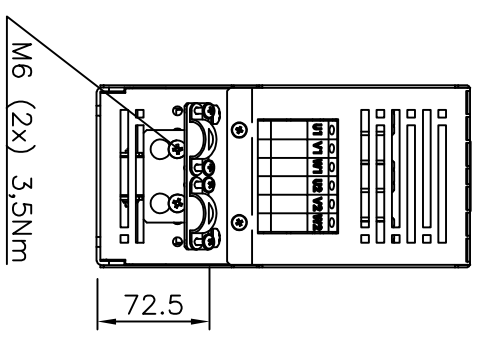
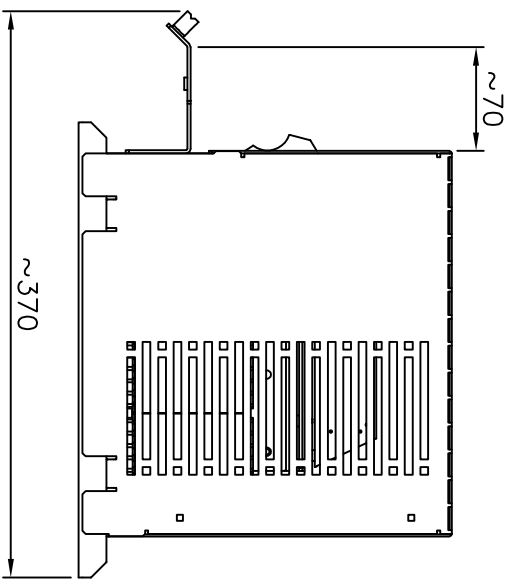
Dimensions B 1406032.1
 du/dt filter 40A – IP20

order number	drawing number	modi.	sheet
130B2836	Z791411007	e	1/2

Please observe protection clause to ISO 16016



included accessories
(screen connection plate)



Dimensions toleranced according to ISO 2768-m					
Tolerance class	0,5	from 3	from 6	from 30	from 120
	to 3	to 6	to 30	to 120	to 400
m (middle)	±0,1	±0,1	±0,2	±0,3	±0,5
				±0,5	±0,8

drawn	24.1.1.14	Eilers	Eilers	scale	1:5
checked	24.1.1.14	Flemming	Flemming	format	A4
date		name	signature	DIN ISO 5456	
				di dimensions mm	
order number		drawing number		modi.	
130B2836		Z791411007		e	
Please observe protection clause to ISO 16016					
Dimensions B 1406032.1 du/dt filter 40A – IP20					
sheet 2/2					

