

additional informations:
 filter colour : RAL7001
 filter weight : 25,5kg
 cable clamp : 2x 130B4045
 50mm² terminal

label:

VLT MCC 102 du/dt FILTER
 www.danfoss.com

Danfoss AS, 8430 Rudkøbing, Denmark
 MADE IN GERMANY

TIC: MCC102-1057ME203
 P/N: 130B2842
 3x 200-580V, 50/60Hz max. 100Hz-1
 3x 100A @440V 105A @500V 100A @600V
 Chassis IP20 Temp. 40°C/125°F

SIN: 000199206
 C=151H
 E=34HZ
 P=145V
 Weight: 25.5kg
 Tightening torque: 20.0 Nm
 only EU

Use only with a type 1 or type 2 SPD overcurrent-protected device

US REC E-73027
 ENEC 1751
 IEC 60947-2
 IEC 60947-1
 IEC 60947-3
 IEC 60947-4
 IEC 60947-5
 IEC 60947-6
 IEC 60947-7
 IEC 60947-8
 IEC 60947-9
 IEC 60947-10
 IEC 60947-11
 IEC 60947-12
 IEC 60947-13
 IEC 60947-14
 IEC 60947-15
 IEC 60947-16
 IEC 60947-17
 IEC 60947-18
 IEC 60947-19
 IEC 60947-20
 IEC 60947-21
 IEC 60947-22
 IEC 60947-23
 IEC 60947-24
 IEC 60947-25
 IEC 60947-26
 IEC 60947-27
 IEC 60947-28
 IEC 60947-29
 IEC 60947-30
 IEC 60947-31
 IEC 60947-32
 IEC 60947-33
 IEC 60947-34
 IEC 60947-35
 IEC 60947-36
 IEC 60947-37
 IEC 60947-38
 IEC 60947-39
 IEC 60947-40
 IEC 60947-41
 IEC 60947-42
 IEC 60947-43
 IEC 60947-44
 IEC 60947-45
 IEC 60947-46
 IEC 60947-47
 IEC 60947-48
 IEC 60947-49
 IEC 60947-50
 IEC 60947-51
 IEC 60947-52
 IEC 60947-53
 IEC 60947-54
 IEC 60947-55
 IEC 60947-56
 IEC 60947-57
 IEC 60947-58
 IEC 60947-59
 IEC 60947-60
 IEC 60947-61
 IEC 60947-62
 IEC 60947-63
 IEC 60947-64
 IEC 60947-65
 IEC 60947-66
 IEC 60947-67
 IEC 60947-68
 IEC 60947-69
 IEC 60947-70
 IEC 60947-71
 IEC 60947-72
 IEC 60947-73
 IEC 60947-74
 IEC 60947-75
 IEC 60947-76
 IEC 60947-77
 IEC 60947-78
 IEC 60947-79
 IEC 60947-80
 IEC 60947-81
 IEC 60947-82
 IEC 60947-83
 IEC 60947-84
 IEC 60947-85
 IEC 60947-86
 IEC 60947-87
 IEC 60947-88
 IEC 60947-89
 IEC 60947-90
 IEC 60947-91
 IEC 60947-92
 IEC 60947-93
 IEC 60947-94
 IEC 60947-95
 IEC 60947-96
 IEC 60947-97
 IEC 60947-98
 IEC 60947-99
 IEC 60947-100

EN61558 CE

d	17.05.16	Schr./Fie.	typelabel updated, Danfoss Postaddress included
c	14.01.13	Schr./Kor.	typelabel updated
b	02.07.10	KOR/BRE	approval added
a	12.01.10	KOR/BRE	part-no. added
	date	name	amendment

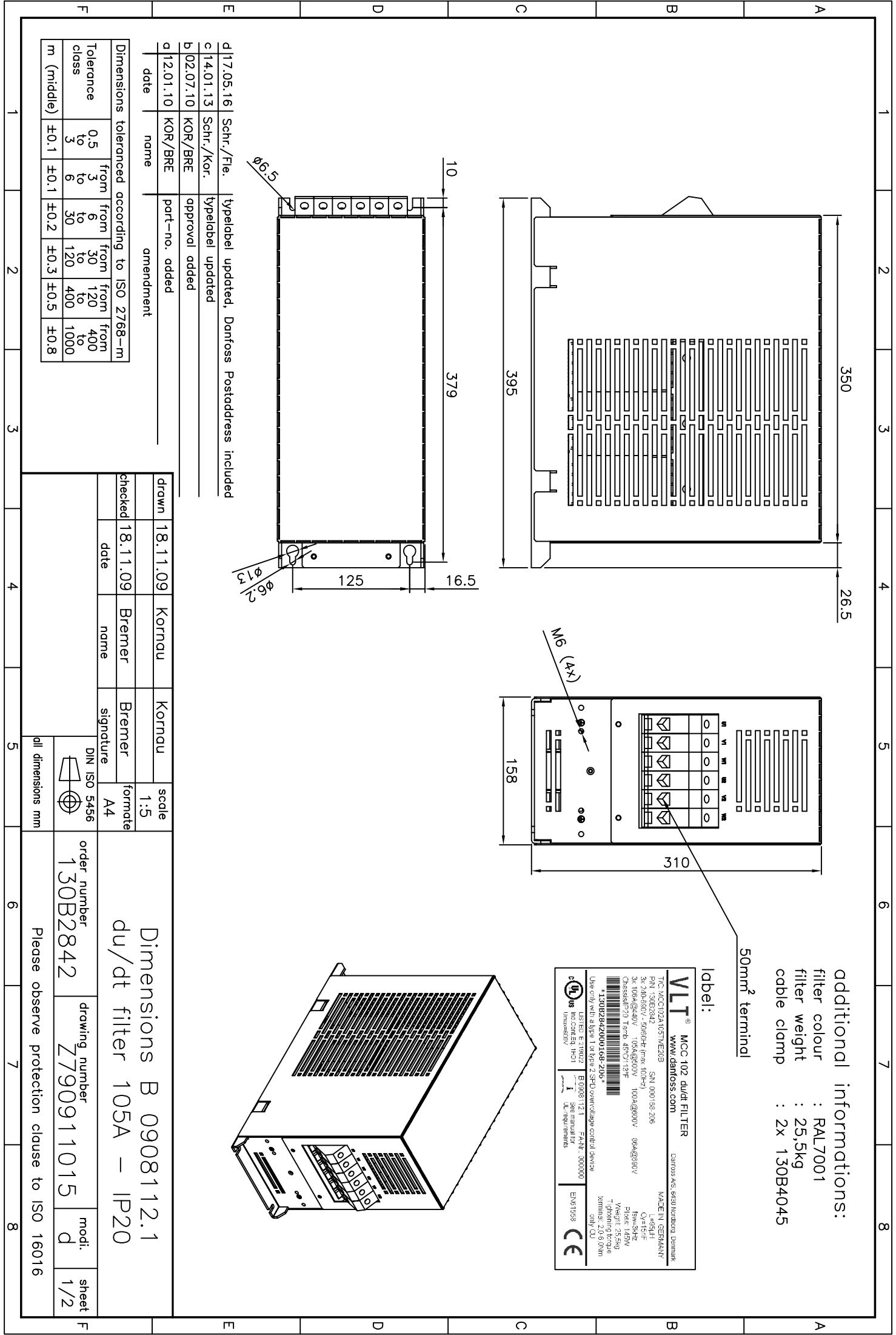
Dimensions toleranced according to ISO 2768-m			
Tolerance class	0,5 to 3	from 3 to 6	from 6 to 30
m (middle)	±0,1	±0,1	±0,2
		from 30 to 120	from 120 to 400
		from 120 to 400	from 400 to 1000
		±0,3	±0,5
		±0,5	±0,8

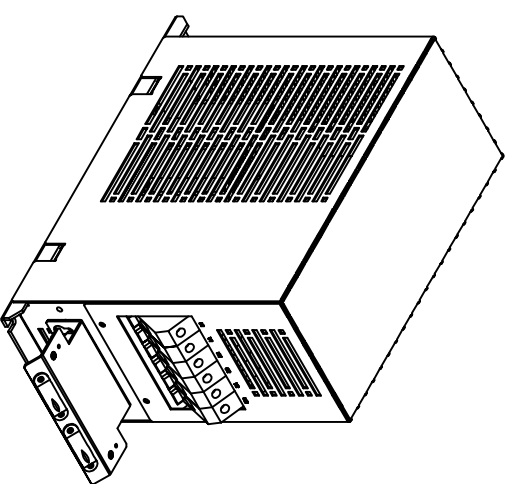
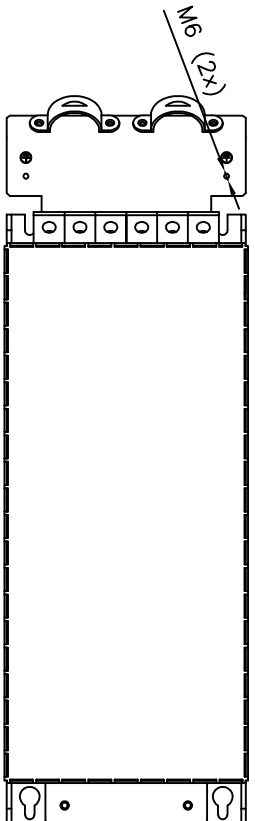
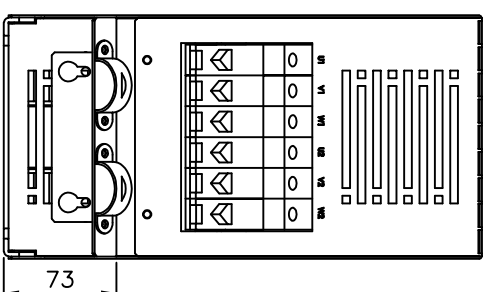
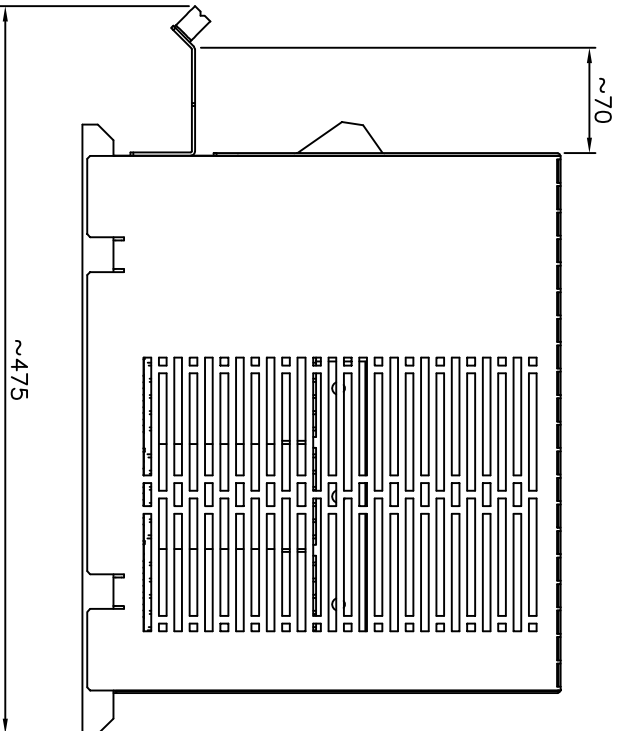
drawn	18.11.09	Kornau	Kornau	scale	1:5
checked	18.11.09	Bremer	Bremer	format	A4
	date	name	signature		



Dimensions B 0908112.1
 du/dt filter 105A – IP20

order number	130B2842	drawing number	Z790911015	modi.	d	sheet	1/2
Please observe protection clause to ISO 16016							





included accessories
(screen connection plate)

d | 17.05.16 | Schr./Fie. | typelabel updated, Danfoss Postaddress included
 c | 14.01.13 | Schr./Kor. | typelabel updated
 b | 02.07.10 | KOR/BRE | approval added
 a | 12.01.10 | KOR/BRE | part-no. added
 date | name | amendment

Dimensions tolerated according to ISO 2768-m	
Tolerance class	0,5 to 3
m (middle)	±0,1
	from 3 to 6
	from 6 to 30
	from 30 to 120
	from 120 to 400
	from 400 to 1000
	±0,1
	±0,1
	±0,2
	±0,3
	±0,5
	±0,5
	±0,8

drawn	18.11.09	Kornau	Kornau	scale	1:5
checked	18.11.09	Bremer	Bremer	format	A4
	date	name	signature		



all dimensions mm

Dimensions B 0908112.1
du/dt filter 105A – IP20

order number	130B2842	drawing number	Z790911015	modi.	d	sheet	2/2
--------------	----------	----------------	------------	-------	---	-------	-----

Please observe protection clause to ISO 16016