

additional informations:
 filter colour : impregnated
 filter weight : 745kg

Label:

VLT MCC 101 sine wave FILTER
 www.danfoss.com

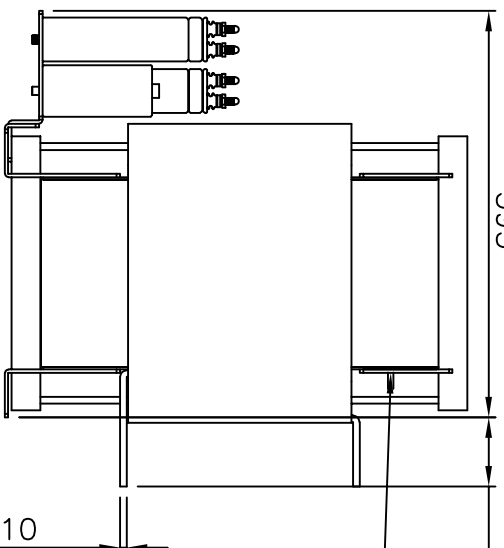
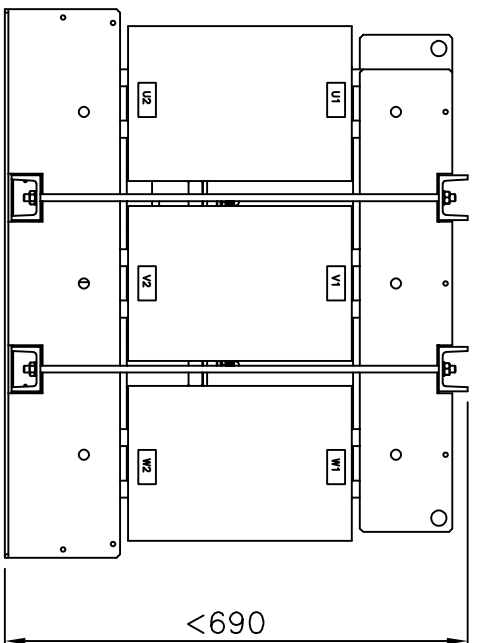
MADE IN GERMANY
 C-4501
 Isart 15472
 Fluse 2000W
 Weight 745kg
 Terminals 500A

130B415600156-196

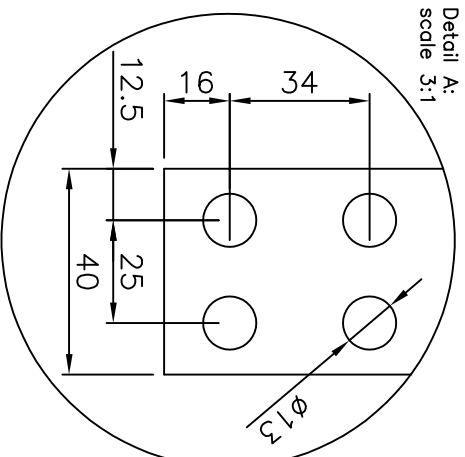
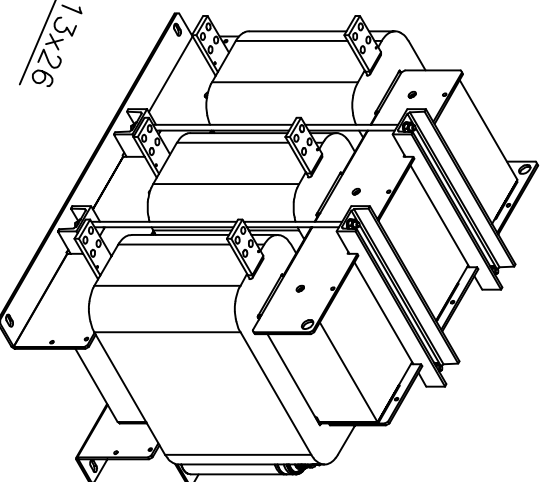
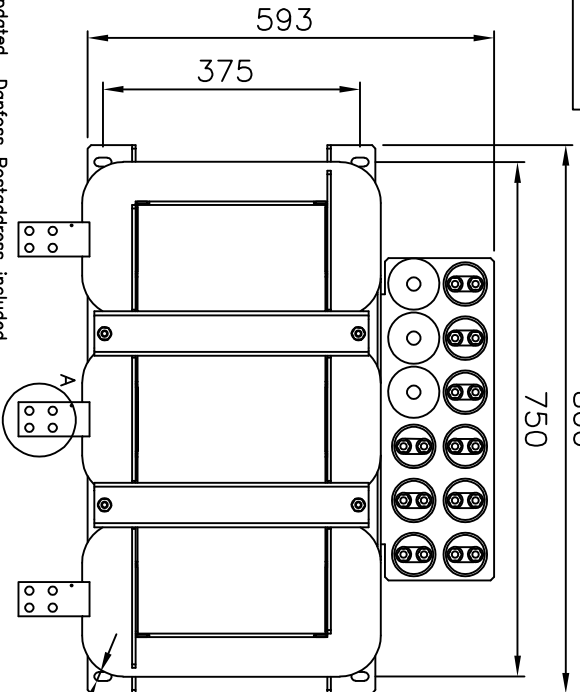
Use only with a Danfoss 1 or type 2 SPD overvoltage control device

E 219922
 Danfoss
 Danfoss AG
 Danfossvej 1
 8400 Skovbakke
 Denmark

EN 61558
 CE



max. 120
 PE bolt M10
 (2x washer, 1 lock washer, 1 nut)



d|11.05.16| Schr./File: | bylabel updated, Danfoss Postaddress included
 c|22.12.14| Schr./File: | bylabel updated, cap. connectors changed to bolt
 b|25.03.13| Schr./Kor. | bylabel updated
 a|01.10.10| KOR/ Lauer | approval added

date	name	amendment

Dimensions tolerated according to ISO 2768-m			
Tolerance class	0.5 to 3	from 3 to 6	from 6 to 30
	3 to 6	6 to 30	30 to 120
m (middle)	± 0.1	± 0.1	± 0.2
			± 0.3
			± 0.5
			± 0.8

drawn	checked	date	name	signature	scale
06.05.10	06.05.10	06.05.10	Kornau	Bremer	A4

Dimensions B 1002059
 sine-wave filter 690V 660A – IP00

order number	130B4156	drawing number	Z791004019	modi.	d	sheet	1/1
Please observe protection clause to ISO 16016							

F 1 2 3 4 5 6 7 8