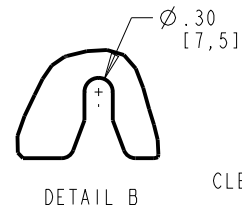
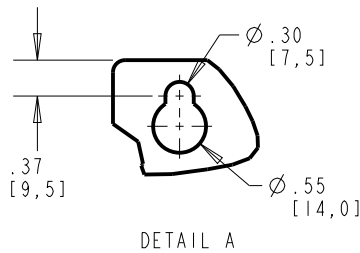
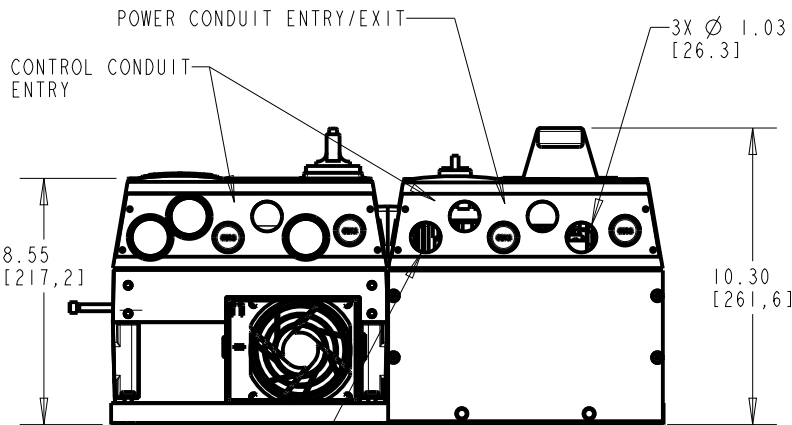
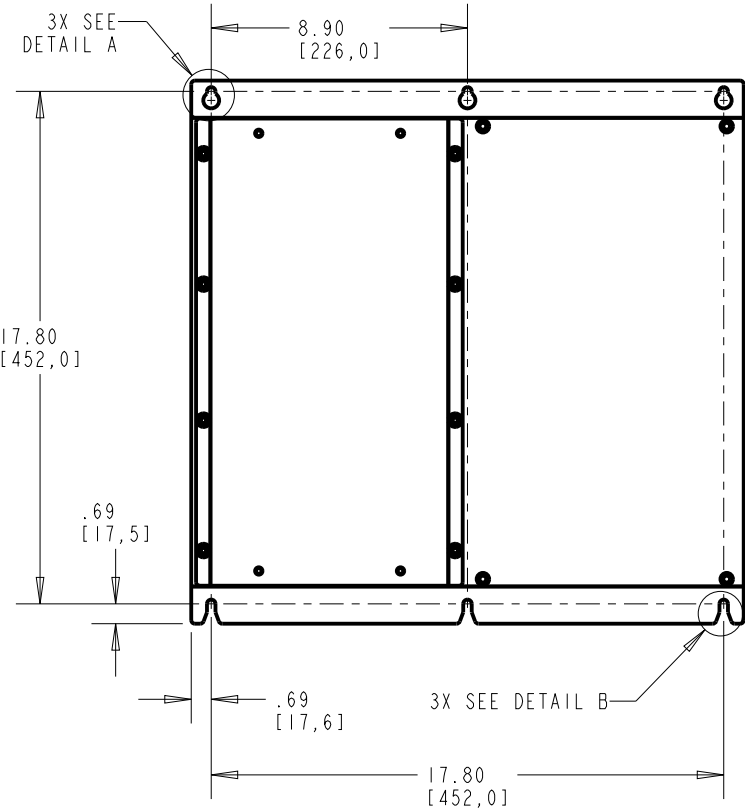
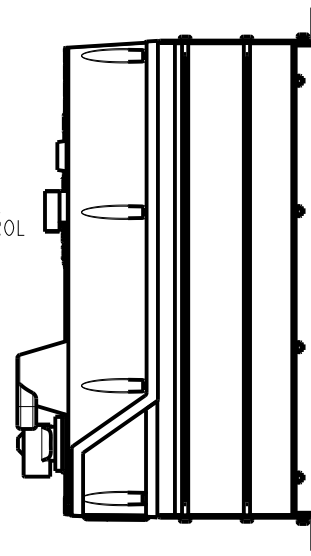
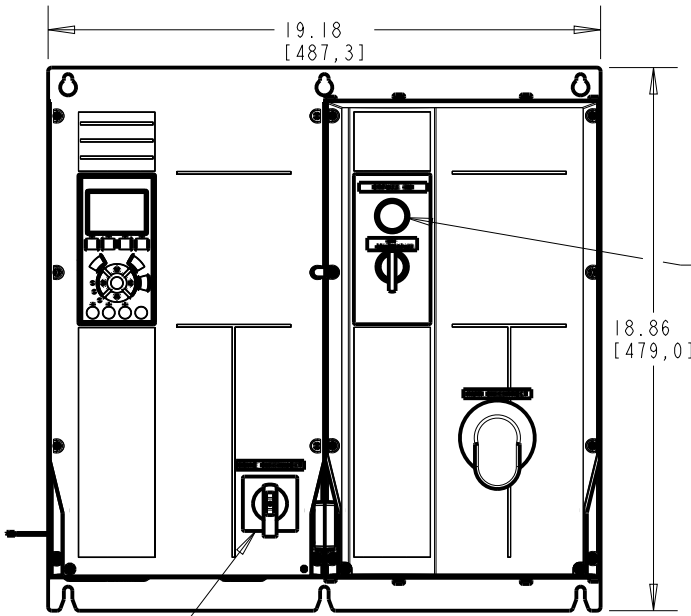


4

3

2

1



FRAME SIZE A5		
VOLTAGE	HP	KW
208/230	0.5-5	0.75-3.7
460/600	0.5-10	0.75-7.5

CLEARANCE REQUIREMENT FOR AIR FLOW COOLING:  
 THE UNIT MUST BE INSTALLED VERTICALLY WITH THE MINIMUM CLEARANCE OF 3.94in [100.0mm] ON THE TOP AND BOTTOM. UL NEMA TYPE 1/IP21 AND NEMA TYPE 12/IP54 UNITS MAY BE MOUNTED SIDE BY SIDE WITH NO MINIMUM SIDE CLEARANCE.

WEIGHT: 55 lbs [25 kg]

- 1) 3X PLACE CONDUITS IN PRE-EXISTING CONDUIT HOLES. IF NOT USED, PLUG WITH NEMA TYPE 12 HOLE PLUGS.
- 2) FOR NEMA TYPE 12 UNITS USE NEMA TYPE 12 CONDUITS AND HUBS

-NOTICE-  
 THIS DRAWING IS PROPRIETARY AND SHALL NOT BE COPIED OR ITS CONTENTS DISCLOSED TO OUTSIDE PARTIES WITHOUT THE WRITTEN CONSENT OF THE TRANE COMPANY

PRO-E ENTRY BY/DATE: MN 10/17/08	CHECKED BY/DATE:	<b>THE TRANE COMPANY</b>				
DESIGNED BY/DATE: MN 10/17/08	MFG. APPROVAL BY/DATE:					
APPROVAL:	ENG. APPROVAL BY/DATE:	TITLE: DWG, REF, SUBMITTAL, A5-TIER 2				
LATEST E.C.N. NO.: SPI0100	E.C.N. PRO-E ENTRY BY/DATE: SAK 09/01/10	PLOT SCALE: NONE	PRO-E FILE:	SHEET: 1 OF 1	DRAWING NO.: 174N3458	REV.: A

4

3

2

1