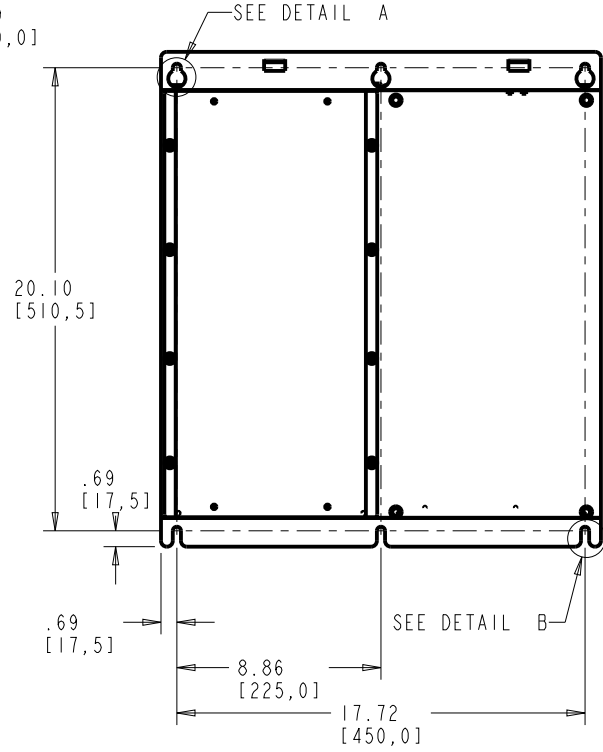
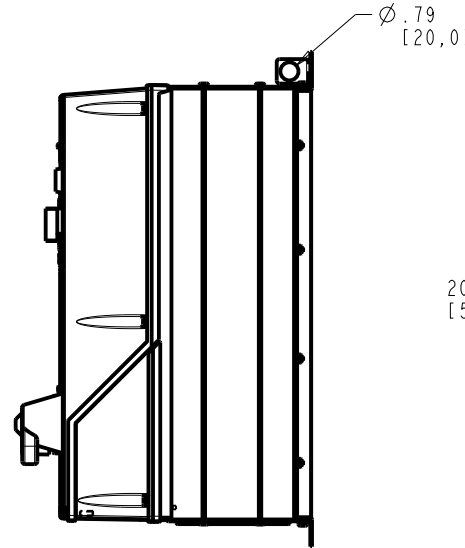
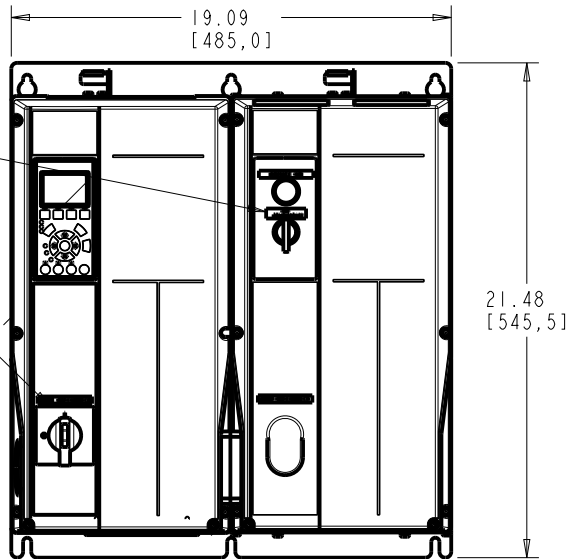


4

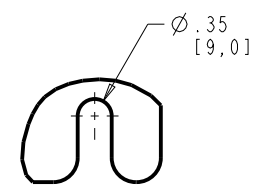
3

2

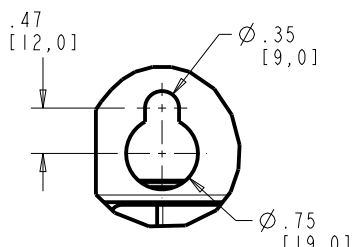
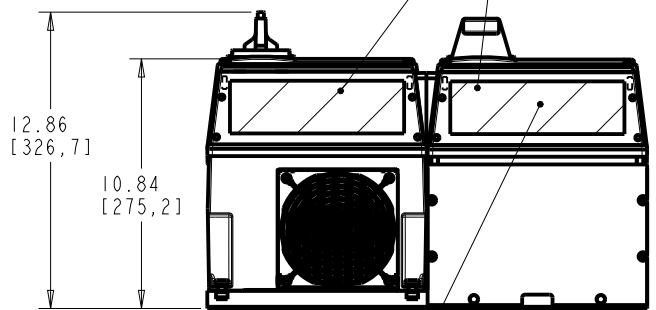
1



CONTROL CONDUIT ENTRY  
FOR NEMA TYPE 12 UNITS USE NEMA  
TYPE 12 CONDUITS AND HUBS



DETAIL B



DETAIL A

FRAME SIZE BI		
VOLTAGE	HP	KW
208/230	7.5-10	5.5-7.5
460/600	15-25	11-18.5

CLEARANCE REQUIREMENT FOR AIR FLOW COOLING:  
THE UNIT MUST BE INSTALLED VERTICALLY WITH THE MINIMUM CLEARANCE OF 3.94in [100.0mm] ON THE TOP AND BOTTOM. ALL UL NEMA TYPE 1/IP21 AND NEMA TYPE 12/IP54 UNITS MAY BE MOUNTED SIDE BY SIDE WITH NO MINIMUM SIDE CLEARANCE.

WEIGHT: 85 lbs [39 kg]

-NOTICE-  
THIS DRAWING IS PROPRIETARY AND SHALL NOT  
BE COPIED OR ITS CONTENTS DISCLOSED TO  
OUTSIDE PARTIES WITHOUT THE WRITTEN  
CONSENT OF THE TRANE COMPANY

PRO-E ENTRY BY/DATE:  
MN 10/20/08  
DESIGNED BY/DATE:  
MN 10/20/08  
APPROVAL:

CHECKED BY/DATE:  
MFG. APPROVAL BY/DATE:  
ENG. APPROVAL BY/DATE:

THE TRANE COMPANY

DWG, REF, SUBMITTAL, BI T2

LATEST E.C.N. NO.:  
SPI0100

E.C.N. PRO-E ENTRY BY/DATE:  
SAK 09/01/10

PLOT SCALE:  
NONE

PRO-E FILE:

SHEET: OF: DRAWING NO.:  
1 1 174N3462

REV.:  
A

4

3

2

1

