

4 3 2 1

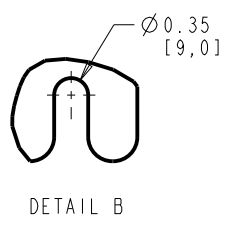
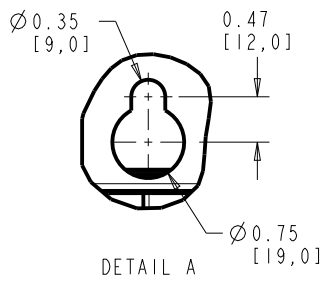
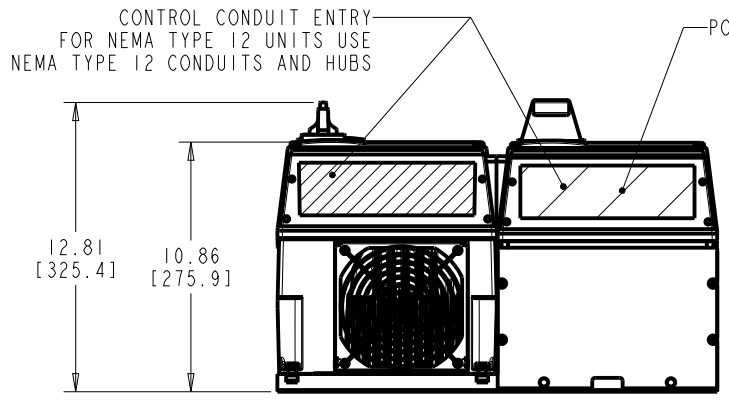
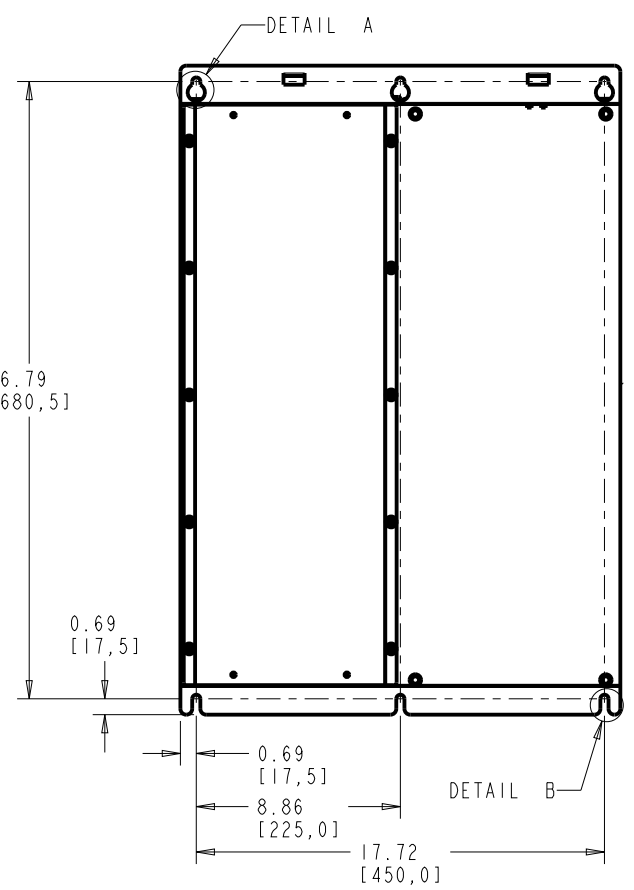
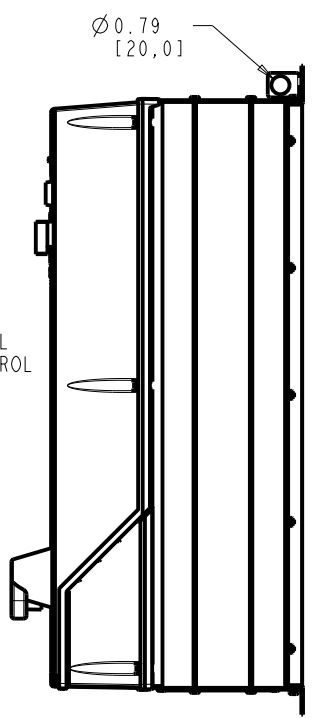
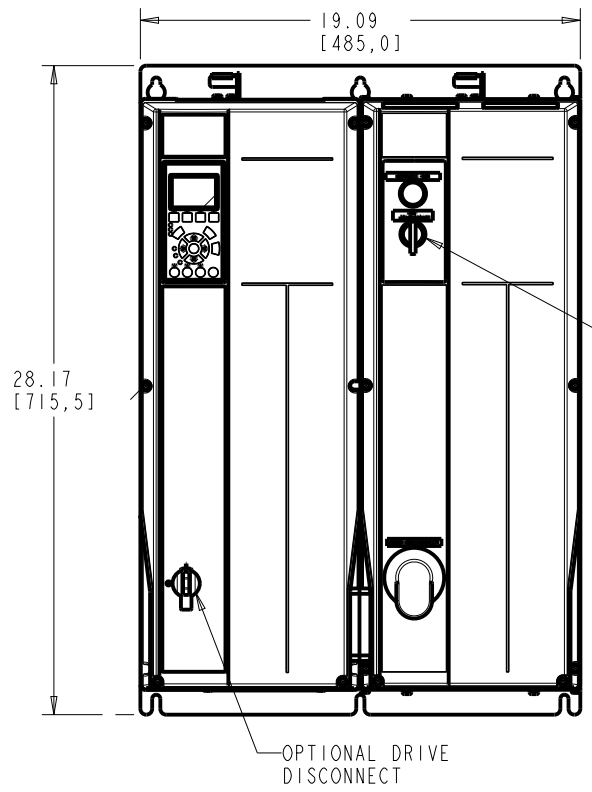
D

C

B

A

4 3 2 1



FRAME SIZE B2		
VOLTAGE	HP	KW
208/230	15-20	11-15
460/600	30-40	22-30

CLEARANCE REQUIREMENT FOR AIR FLOW COOLING:
 THE UNIT MUST BE INSTALLED VERTICALLY WITH THE MINIMUM CLEARANCE OF 3.94in [100.0mm] ON THE TOP AND BOTTOM. ALL UL NEMA TYPE 1/1P21 AND NEMA TYPE 12/1P54 UNITS MAY BE MOUNTED SIDE BY SIDE WITH NO MINIMUM SIDE CLEARANCE.

WEIGHT: 105 lbs [48 kg]

<p align="center">-NOTICE- THIS DRAWING IS PROPRIETARY AND SHALL NOT BE COPIED OR ITS CONTENTS DISCLOSED TO OUTSIDE PARTIES WITHOUT THE WRITTEN CONSENT OF THE TRANE COMPANY</p>		PRO-E ENTRY BY/DATE: MN 10/20/08	CHECKED BY/DATE:	THE TRANE COMPANY		
		DESIGNED BY/DATE: MN 10/20/08 APPROVAL:	MFG. APPROVAL BY/DATE: ENG. APPROVAL BY/DATE:		TITLE: DWG, REF, SUBMITTAL, B2 T2	
LATEST E.C.N. NO.: SPI0100	E.C.N. PRO-E ENTRY BY/DATE: SAK 09/01/10	PLOT SCALE: NONE	PRO-E FILE:	SHEET: 1 OF 1	DRAWING NO.: 174N3465	REV.: A