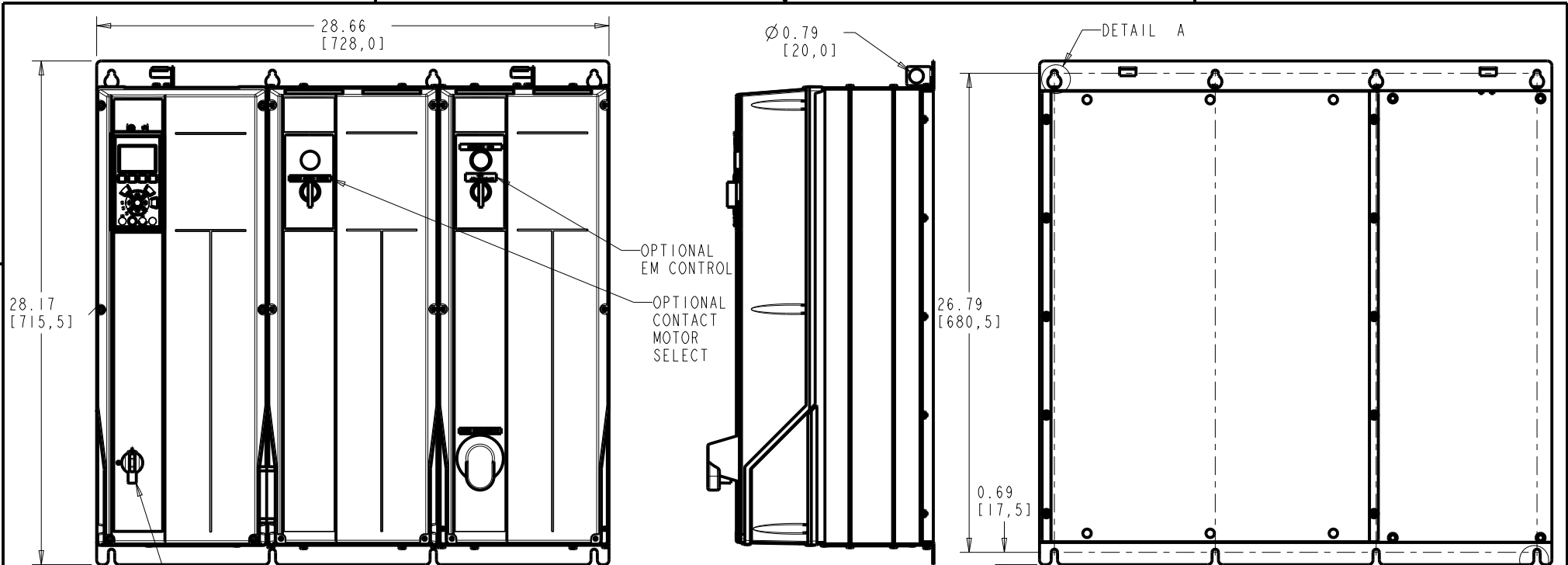


4

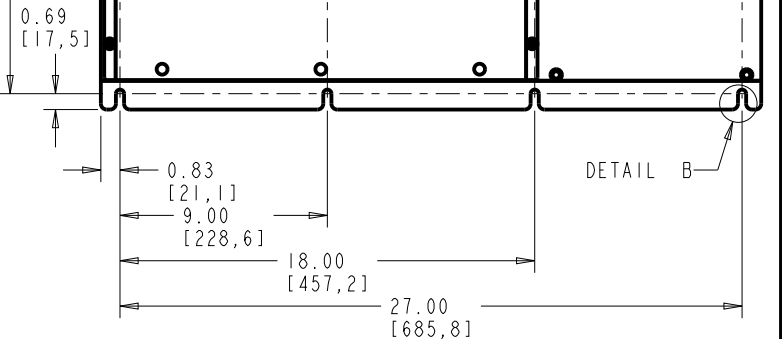
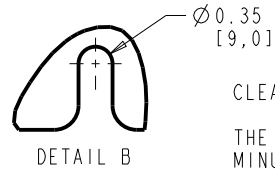
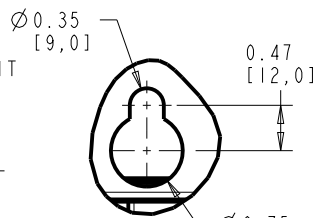
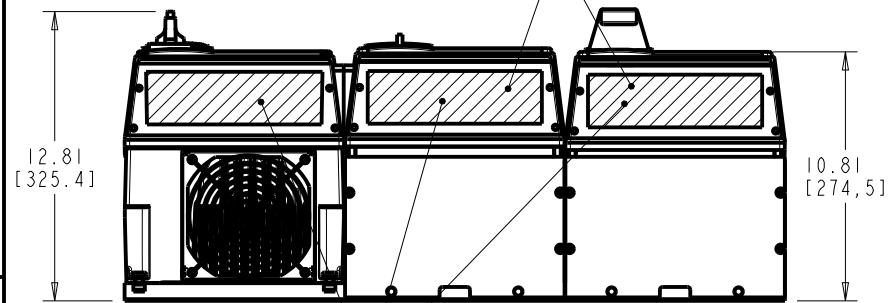
3

2

1



OPTIONAL DRIVE DISCONNECT



CLEARANCE REQUIREMENT FOR AIR FLOW COOLING:
 THE UNIT MUST BE INSTALLED VERTICALLY WITH THE MINIMUM CLEARANCE OF 3.94in [100.0mm] ON THE TOP AND BOTTOM. ALL UL NEMA TYPE 1/IP21 AND NEMA TYPE 12/IP54 UNITS MAY BE MOUNTED SIDE BY SIDE WITH NO MINIMUM SIDE CLEARANCE.

WEIGHT: 180 lbs [82 kg]

FRAME SIZE B2		
VOLTAGE	HP	KW
208/230	15-20	11-15
460/600	30-40	22-30

-NOTICE-
 THIS DRAWING IS PROPRIETARY AND SHALL NOT BE COPIED OR ITS CONTENTS DISCLOSED TO OUTSIDE PARTIES WITHOUT THE WRITTEN CONSENT OF THE TRANE COMPANY

PRO-E ENTRY BY/DATE: MN 10/20/08
 DESIGNED BY/DATE: MN 10/20/08
 APPROVAL:

CHECKED BY/DATE:
 MFG. APPROVAL BY/DATE:
 ENG. APPROVAL BY/DATE:

THE TRANE COMPANY

DWG, REF, SUBMITTAL, B2 T3

LATEST E.C.N. NO.: SP10100	E.C.N. PRO-E ENTRY BY/DATE: SAK 09/01/10	PLOT SCALE: NONE	PRO-E FILE:	SHEET: 1 OF: 1	DRAWING NO.: 174N3466	REV.: A
----------------------------	--	------------------	-------------	----------------	-----------------------	---------

4

3

2

1