

4

3

2

1

D

D

C

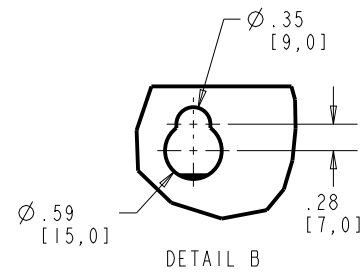
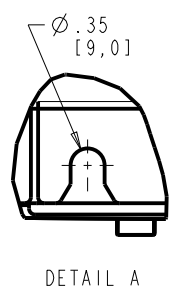
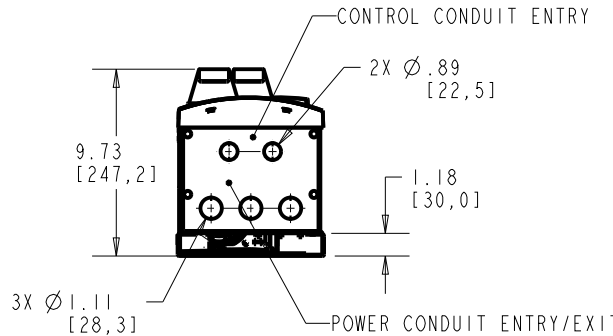
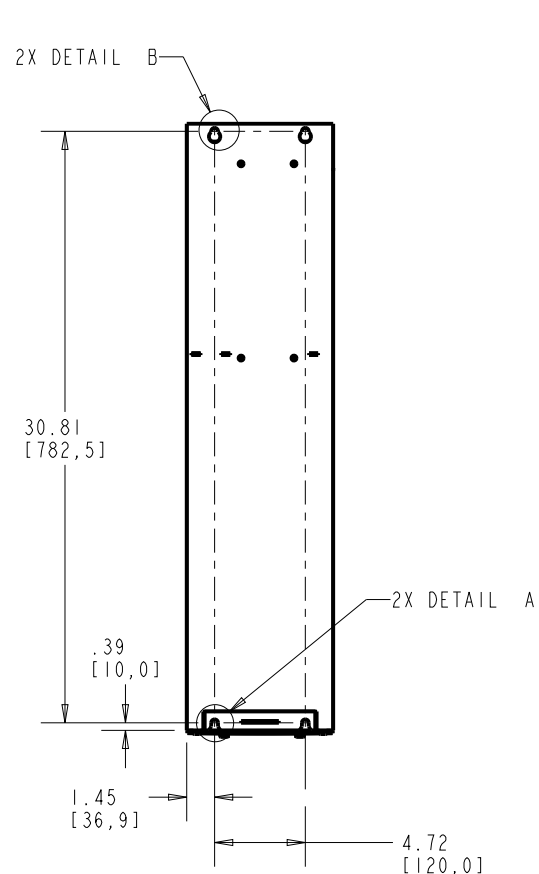
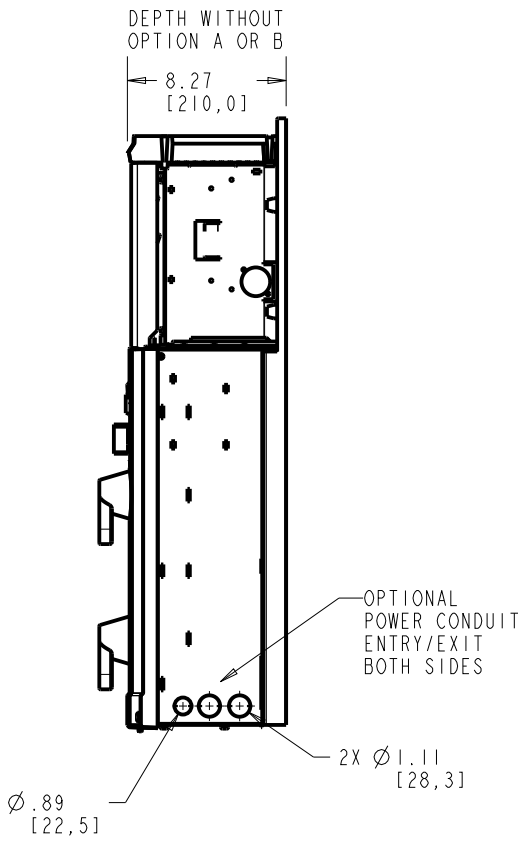
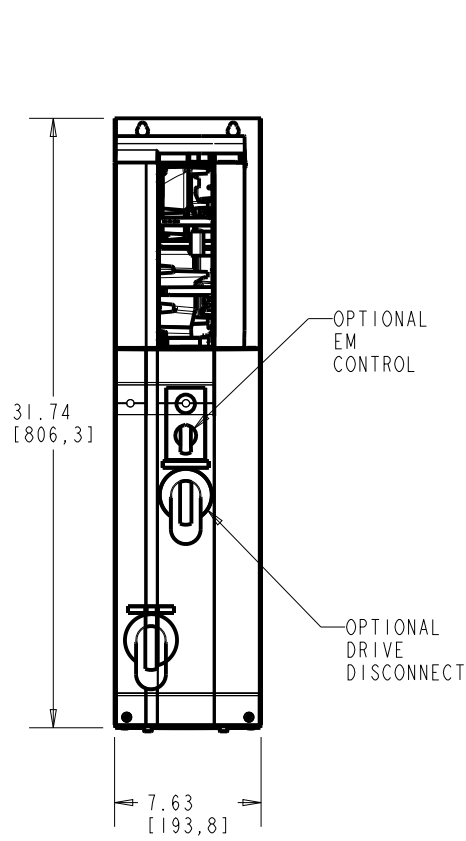
C

B

B

A

A



FRAME SIZE A2 AND A3		
VOLTAGE	HP	KW
208/230	0.5-5	1.1-3.7
460/600	0.5-10	1.1-7.5

CLEARANCE REQUIREMENT FOR AIR FLOW COOLING:
THE UNIT MUST BE INSTALLED VERTICALLY WITH THE MINIMUM CLEARANCE OF 3.94in [100.0mm] ON THE BOTTOM. ALLOW 1.50in [38.1mm] ON EITHER SIDE FOR UNIT COOLING.

WEIGHT: 35 lbs [16 kg]

<p align="center">-NOTICE- THIS DRAWING IS PROPRIETARY AND SHALL NOT BE COPIED OR ITS CONTENTS DISCLOSED TO OUTSIDE PARTIES WITHOUT THE WRITTEN CONSENT OF THE TRANE COMPANY</p>			PRO-E ENTRY BY/DATE: MN 10/20/08	CHECKED BY/DATE:	THE TRANE COMPANY	
			DESIGNED BY/DATE: MN 10/20/08	MFG. APPROVAL BY/DATE:		
LATEST E.C.N. NO.: SPI0100			E.C.N. PRO-E ENTRY BY/DATE: SAK 09/01/10	APPROVAL:	ENG. APPROVAL BY/DATE:	TITLE: DWG, REF, SUBMITTAL, A2-A3-TIER 2
PLOT SCALE: NONE			PRO-E FILE:	SHEET: 1	OF: 1	DRAWING NO.: 174N3473
						REV.: A

4

3

2

1