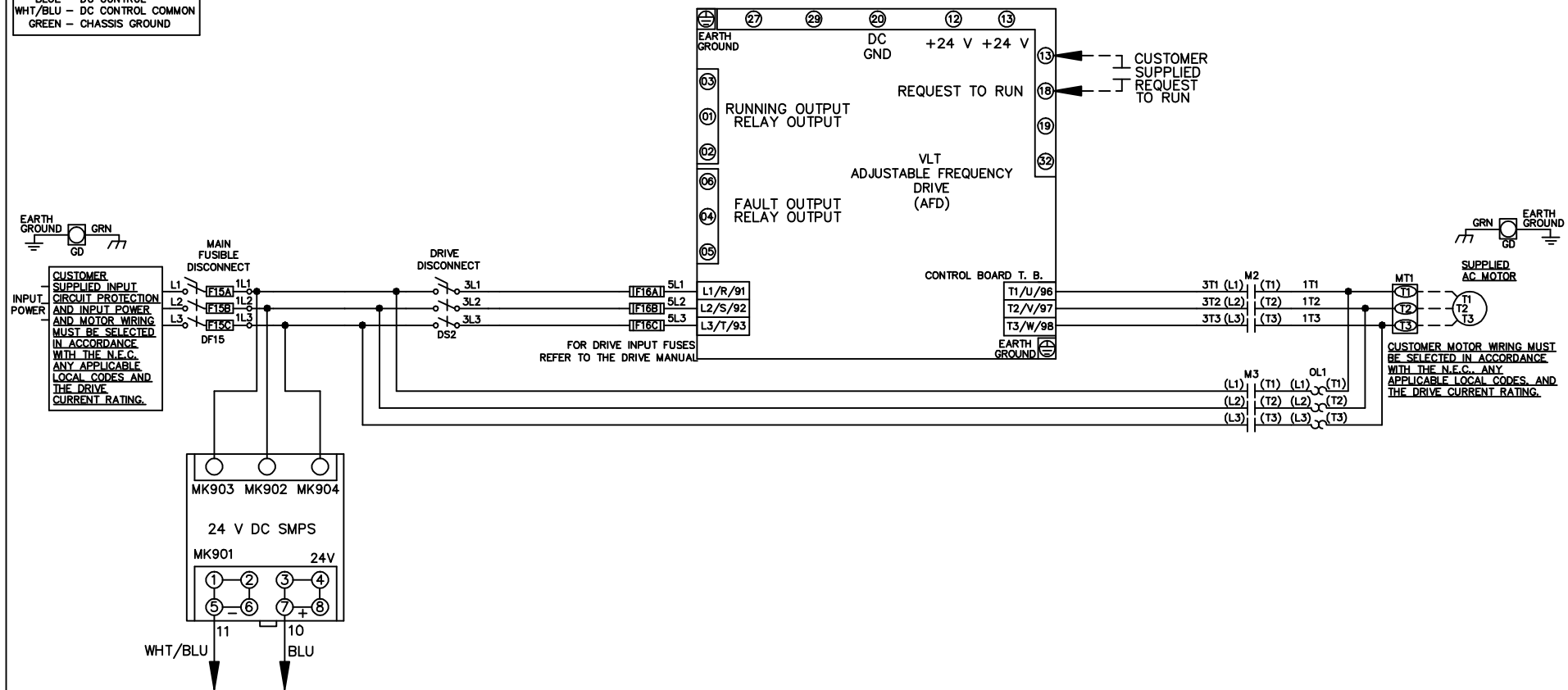


**WIRE COLOR SCHEME**  
 BLACK - LINE VOLTAGE  
 RED - AC CONTROL  
 WHITE - AC GROUNDED  
 CIRCUIT CONDUCTOR  
 BLUE - DC CONTROL  
 WHT/BLU - DC CONTROL COMMON  
 GREEN - CHASSIS GROUND



			-NOTICE-		DRN JNW 2/14/07		NAME 208-600VOLT,2C,MAIN&DRIVE DISC FUSIBLE,ECB,FRAME A2-A3 ,NO REACTOR & DVDT,SINGLE MTR			ITT Residential & Commercial Water Morton Grove, IL USA	
A	SP08061	10/08	*THIS DRAWING AND THE INFORMATION DEPICTED THEREIN IS THE PROPERTY OF ITT. COPIES ARE ISSUED IN STRICT CONFIDENCE AND SHALL NOT BE REPRODUCED OR COPIED, OR USED AS THE BASIS FOR THE MANUFACTURE OR SALE OF PRODUCTS WITHOUT PRIOR WRITTEN PERMISSION OF ITT*.			APR	MODEL	PAGE 1 OF 2	SIZE A	DWG No.	174N3565
REV	ECN	DATE									

REV	ECN	DATE
A	SP08066	10/08

—NOTICE—  
THIS DRAWING AND THE INFORMATION DEPICTED THEREIN IS THE PROPERTY OF IIT. COPIES ARE ISSUED IN STRICT CONFIDENCE AND SHALL NOT BE REPRODUCED OR COPIED, OR USED AS THE BASIS FOR THE MANUFACTURE OR SALE OF PRODUCTS WITHOUT PRIOR WRITTEN PERMISSION OF IIT.

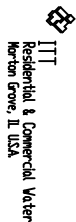
DRN JNW  
2/14/07  
APR

NAME 208-600VOLT, 2C, MAIN & DRIVE DISC  
FUSIBLE, ECB, FRAME A2-A3  
NO REACTOR & DVD, SINGLE MTR

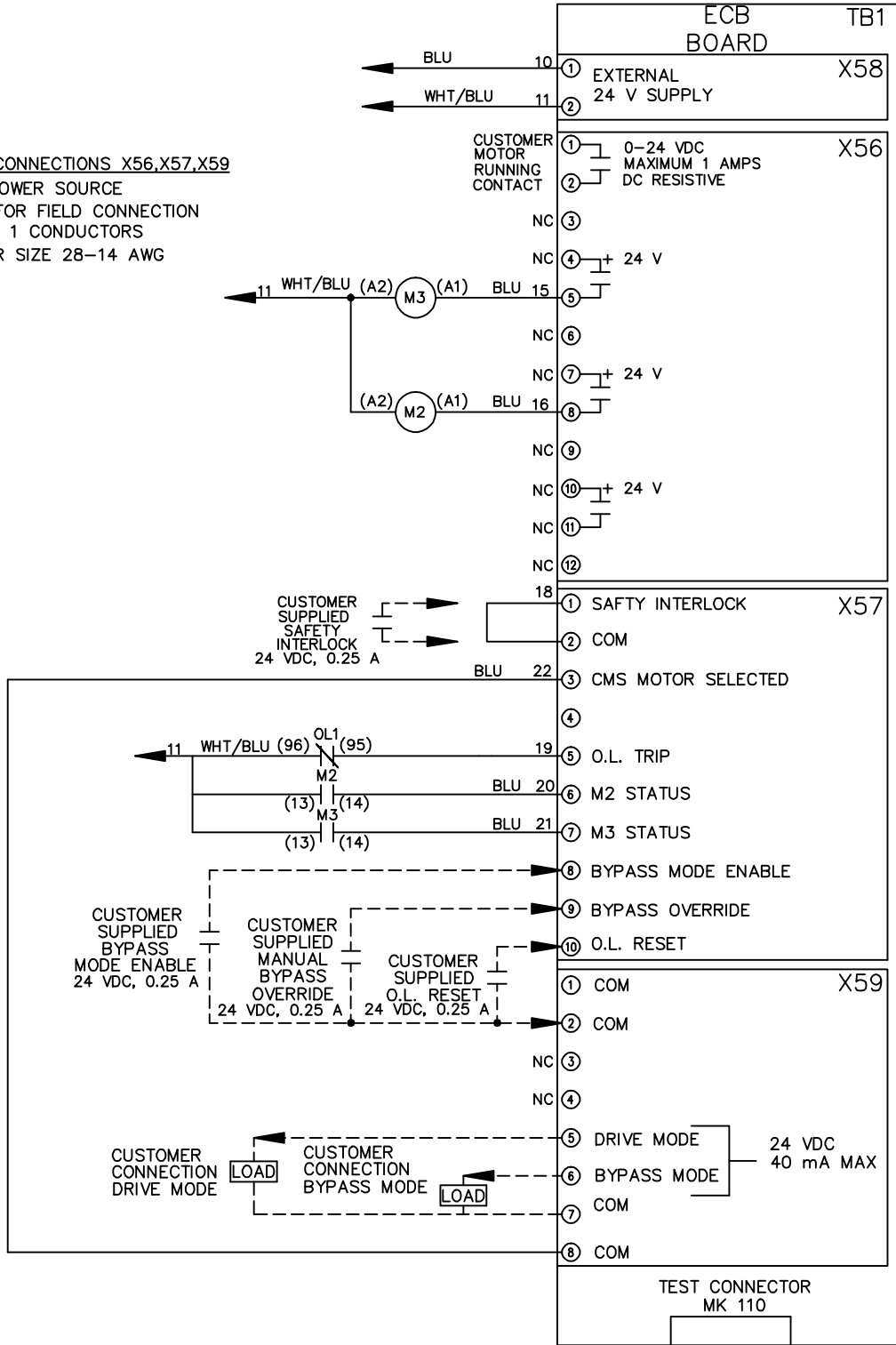
PAGE 2 OF 2

SIZE A

DWG NO. 174N3565



CUSTOMER CONNECTIONS X56, X57, X59  
CLASS 2 POWER SOURCE  
REQUIRED FOR FIELD CONNECTION  
USE CLASS 1 CONDUCTORS  
CONDUCTOR SIZE 28-14 AWG



ECB BOARD TB1

① EXTERNAL 24 V SUPPLY X58  
②

① CUSTOMER MOTOR RUNNING CONTACT X56  
② 0-24 VDC MAXIMUM 1 AMPS DC RESISTIVE  
NC ③

NC ④ 24 V  
⑤

NC ⑥  
NC ⑦ 24 V  
⑧

NC ⑨  
NC ⑩ 24 V  
⑪

NC ⑫  
⑬

NC ⑭  
⑮

① SAFETY INTERLOCK X57  
② COM

③ CMS MOTOR SELECTED  
④

⑤ O.L. TRIP  
⑥ M2 STATUS

⑦ M3 STATUS  
⑧ BYPASS MODE ENABLE

⑨ BYPASS OVERRIDE  
⑩ O.L. RESET

① COM X59  
② COM

NC ③  
NC ④

⑤ DRIVE MODE 24 VDC 40 mA MAX  
⑥ BYPASS MODE

⑦ COM  
⑧ COM

TEST CONNECTOR MK 110