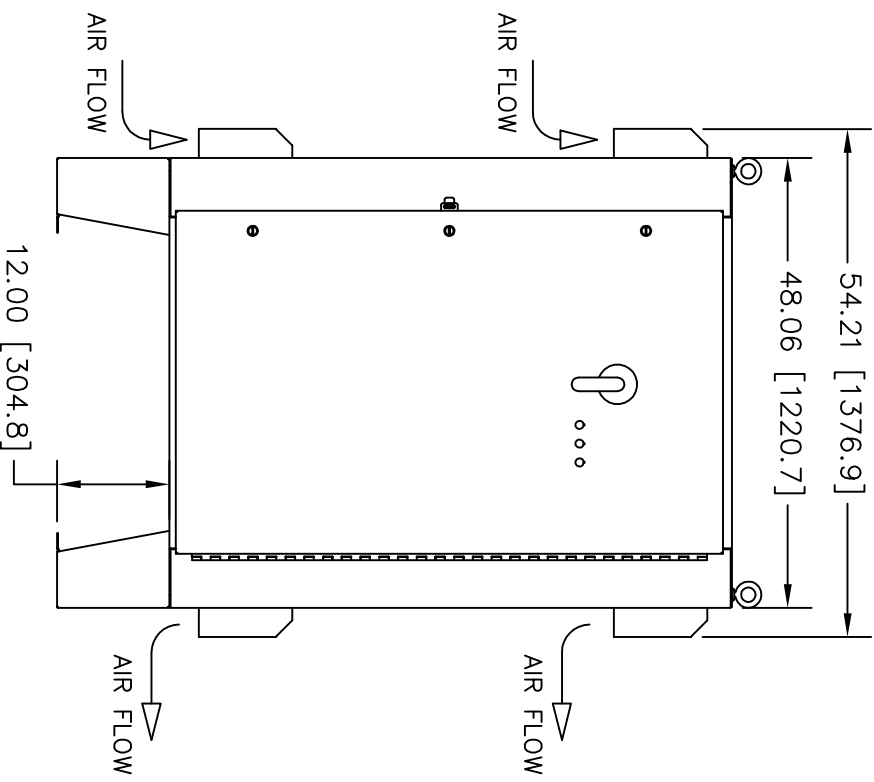
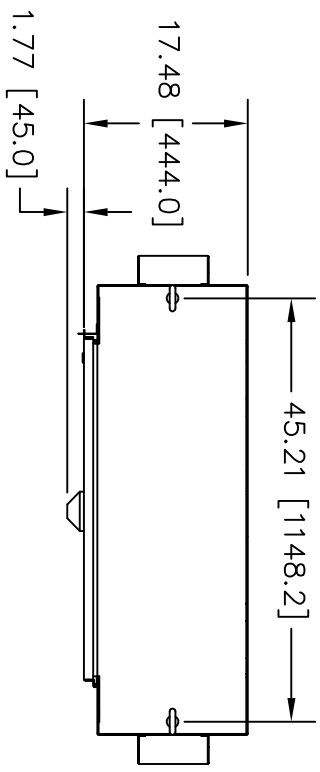


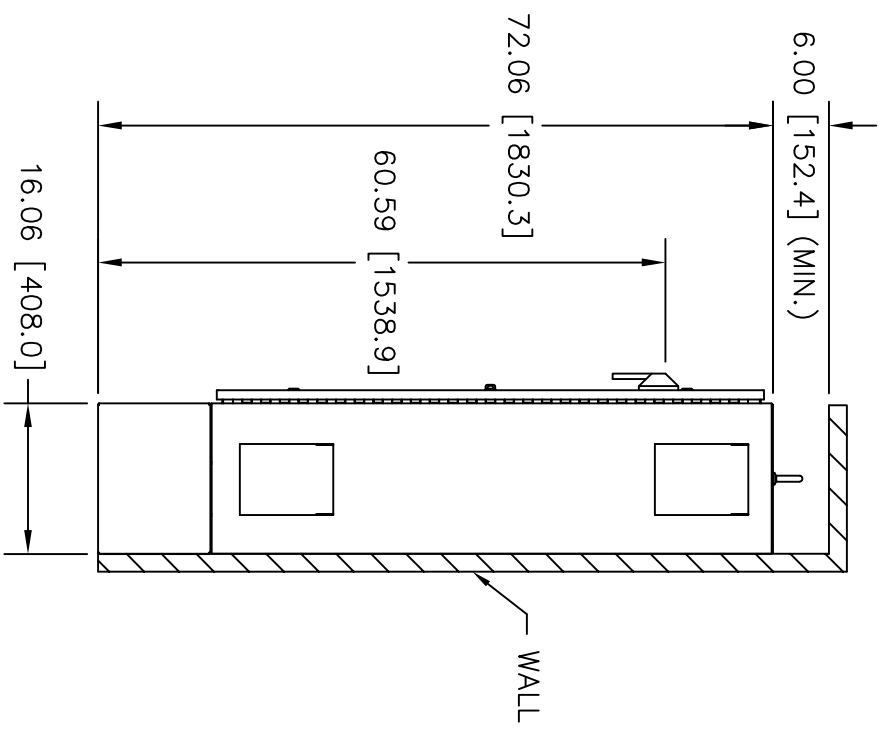
DIMENSIONS ARE IN INCHES [MILLIMETERS]



DIMENSIONS ARE NOT FOR MANUFACTURING PURPOSES

1. ESTIMATED WEIGHT: 450 LBS
2. FRONT CLEARANCE OF 39.00 [990.6] REQUIRED FOR DOOR, LOCAL CODES MAY REQUIRE ADDITIONAL CLEARANCE

HORSEPOWER VALUES			
208V	230V	460V	600V
40HP - 60HP	40HP - 60HP	100HP - 125HP	100HP - 125HP



- NOTICE -

THIS DOCUMENT CONTAINS PROPRIETARY INFORMATION OF DANFOSS DRIVES. IT IS LOANED BY DANFOSS DRIVES SUBJECT TO THE CONDITIONS THAT IT AND THE INFORMATION EMBODIED THEREIN SHALL BE USED ONLY FOR RECORD AND REFERENCE PURPOSES. SHALL NOT BE USED OR CAUSED TO BE USED IN ANY WAY PREJUDICIAL TO THE INTERESTS OF DANFOSS DRIVES. SHALL NOT BE REPRODUCED OR COPIED IN WHOLE OR IN PART, OR DISCLOSED TO ANYONE WITHOUT THE DIRECT WRITTEN PERMISSION OF DANFOSS DRIVES AND SHALL BE RETURNED UPON REQUEST.

B			
A			
DR	ECNSP11078	09/11	
REV	ECN	DATE	

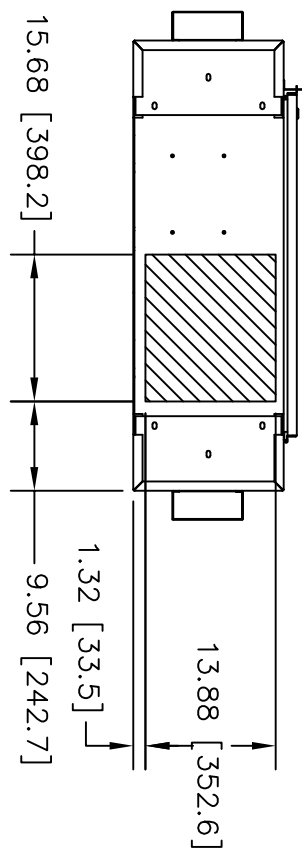
DRN	DTM
APR	DTM

NAME	INSTALLATION / DIMENSIONAL DRAWING		
MODEL	VL T	PAGE 1 OF 2	SIZE A
			DWG NO. 174N7892

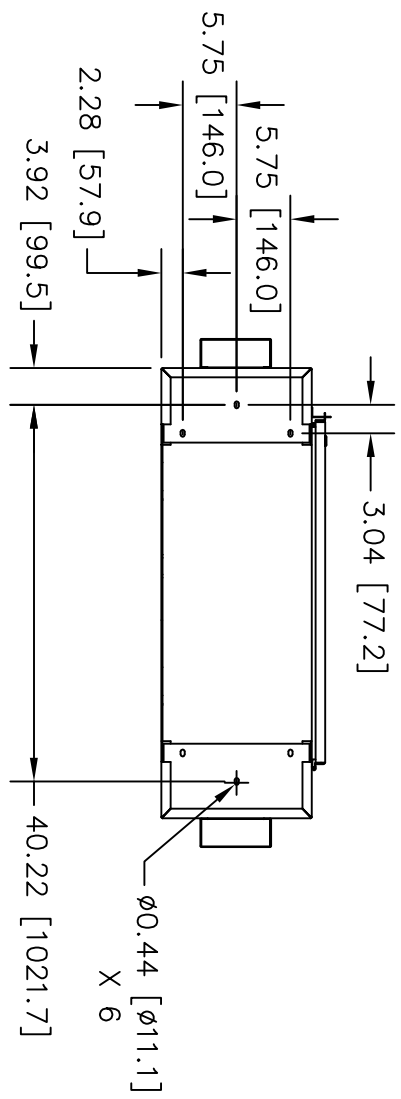


DIMENSIONS ARE IN INCHES [MILLIMETERS]

CONDUIT ENTRY AREA
(BOTTOM VIEW)

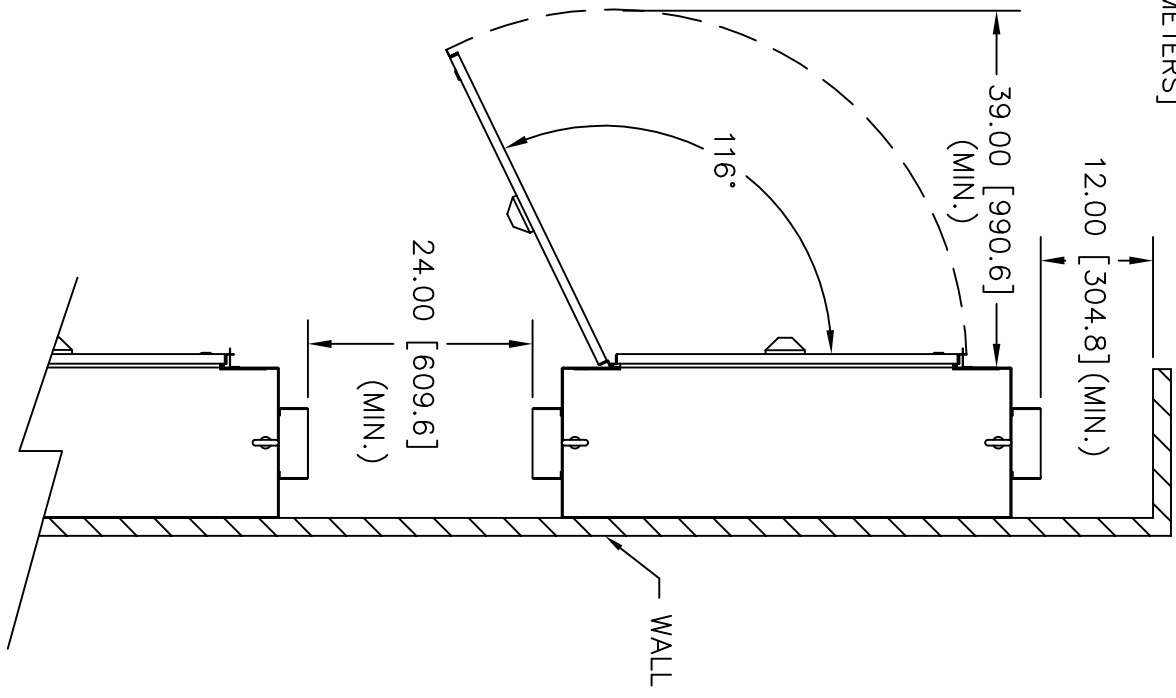


MOUNTING DIMENSIONS
(BOTTOM VIEW)



DIMENSIONS ARE NOT FOR MANUFACTURING PURPOSES

HORIZONTAL SPACE REQUIREMENTS
(TOP VIEW)



NOTICE -

THIS DOCUMENT CONTAINS PROPRIETARY INFORMATION OF DANFOSS DRIVES. IT IS LOANED BY DANFOSS DRIVES SUBJECT TO THE CONDITIONS THAT IT AND THE INFORMATION EMBODIED THEREIN SHALL BE USED ONLY FOR RECORD AND REFERENCE PURPOSES. SHALL NOT BE USED OR CAUSED TO BE USED IN ANY WAY PREJUDICIAL TO THE INTERESTS OF DANFOSS DRIVES. SHALL NOT BE REPRODUCED OR COPIED IN WHOLE OR IN PART, OR DISCLOSED TO ANYONE WITHOUT THE DIRECT WRITTEN PERMISSION OF DANFOSS DRIVES AND SHALL BE RETURNED UPON REQUEST.

B			
A			
DR	ECNSP11078	09/11	
REV	ECN	DATE	

DRN	DTM
APR	DTM

NAME	INSTALLATION / DIMENSIONAL DRAWING
MODEL	VLT
PAGE	2 OF 2
SIZE	A
DWG NO.	174N7892

