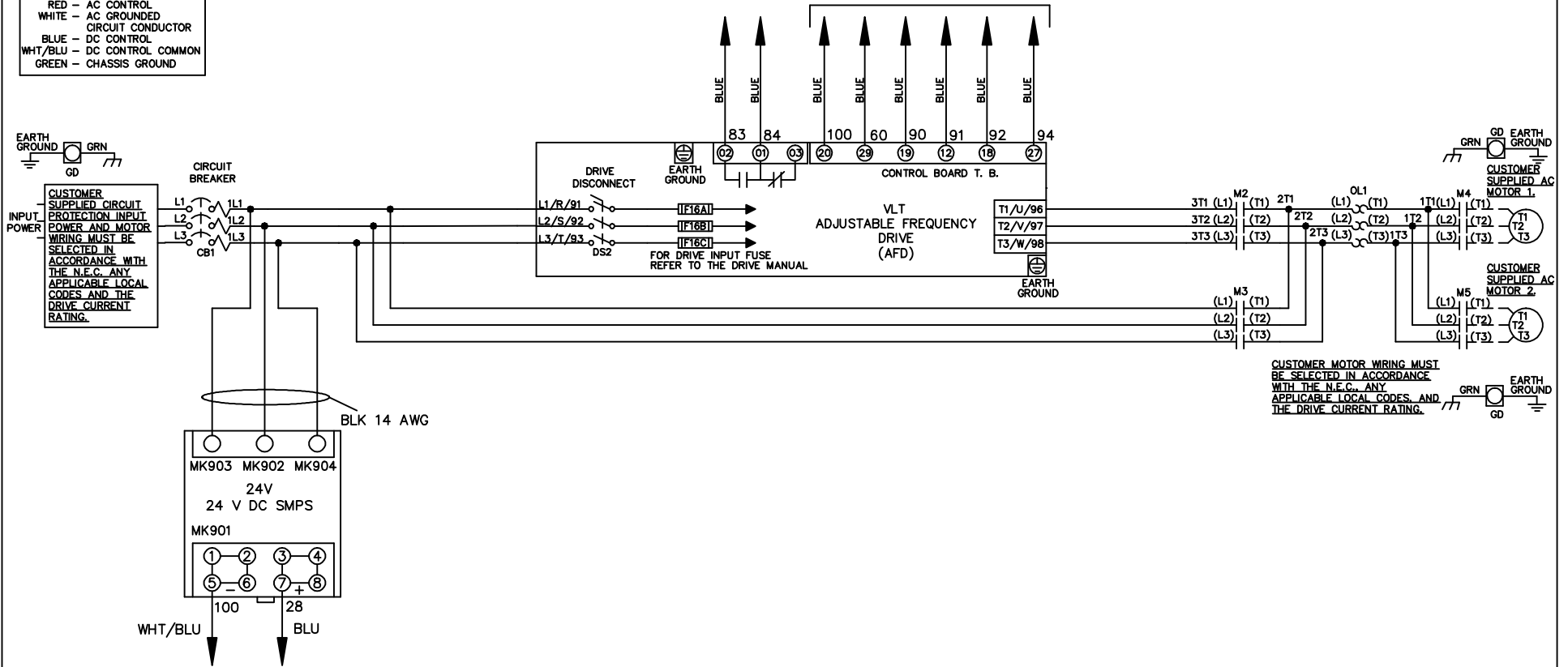


WIRE COLOR SCHEME
 BLACK - LINE VOLTAGE
 RED - AC CONTROL
 WHITE - AC GROUNDED
 WHITE - CIRCUIT CONDUCTOR
 BLUE - DC CONTROL
 WHT/BLU - DC CONTROL COMMON
 GREEN - CHASSIS GROUND

* ALL CONTROL WIRES ARE BLUE EXCEPT WHERE NOTED. TO ELECTROMECHANICAL RELAY BOARD



CUSTOMER MOTOR WIRING MUST BE SELECTED IN ACCORDANCE WITH THE N.E.C. ANY APPLICABLE LOCAL CODES AND THE DRIVE CURRENT RATING.

			- NOTICE -		DRN JNW 2/14/07		NAME 208-600VOLT,2C,CB & DRIVE DISC ,DRIVE FUSE,EMB2,FRAME A5-B1 ,NO REACTOR & DVDT,CMS		<i>Danfoss</i>	
A	SP08061	10/08	THIS DOCUMENT CONTAINS PROPRIETARY INFORMATION OF DANFOSS DRIVES. IT IS LOANED BY DANFOSS DRIVES SUBJECT TO THE CONDITIONS THAT IT AND THE INFORMATION EMBODIED THEREIN SHALL BE USED ONLY FOR RECORD AND REFERENCE PURPOSES, SHALL NOT BE USED OR CAUSED TO BE USED IN ANY WAY PREJUDICIAL TO THE INTERESTS OF DANFOSS DRIVES, SHALL NOT BE REPRODUCED OR COPIED IN WHOLE OR IN PART, OR DISCLOSED TO ANYONE WITHOUT THE DIRECT WRITTEN PERMISSION OF DANFOSS DRIVES AND SHALL BE RETURNED UPON REQUEST.		APR	MODEL	PAGE 1 OF 2	SIZE A	DWG NO.	174U0388
REV	ECN	DATE								

REV	A	SP08066	10/08
ECN			
DATE			

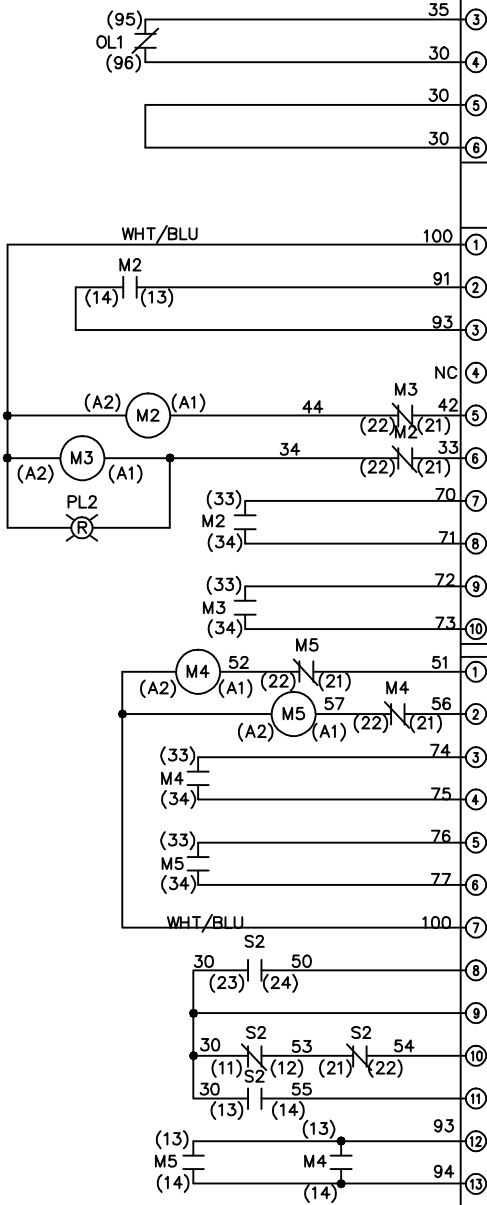
CONTACT SEQUENCE CHART FOR S1 X INDICATES CONTACT CLOSED	
POSITION	
CONTACT	
13-14	
23-24	X
	DRIVE
	OFF
	BYPASS
	X

NOTICE
THIS DOCUMENT CONTAINS PROPRIETARY INFORMATION OF DANFOSS DRIVES. IT IS LOANED BY DANFOSS DRIVES SUBJECT TO THE CONDITIONS THAT IT AND THE INFORMATION EMBODIED THEREIN SHALL BE USED ONLY FOR RECORD AND REFERENCE PURPOSES. SHALL NOT BE USED OR CAUSED TO BE USED IN ANY WAY PREJUDICIAL TO THE INTERESTS OF DANFOSS DRIVES. SHALL NOT BE REPRODUCED OR COPIED IN WHOLE OR IN PART, OR DISCLOSED TO ANYONE WITHOUT THE DIRECT WRITTEN PERMISSION OF DANFOSS DRIVES AND SHALL BE RETURNED UPON REQUEST.

DRN JUNW
2/14/07
APR

MODEL NAME 208-600VOLT, 2C,CB & DRIVE DISC
, DRIVE FUSE, EMB2, FRAME A5-B1
, NO REACTOR & DVDI, CMS

PAGE 2 OF 2
SIZE A
DWG NO. 174U0388



CONTACT SEQUENCE CHART FOR S2 X INDICATES CONTACT CLOSED	
POSITION	
CONTACT	
11-12	X
13-14	X
21-22	X
23-24	X
	MOTOR 1
	AUTO
	MOTOR 2
	X

CUSTOMER CONNECTIONS X55, X56, X58
CLASS 2 POWER SOURCE
REQUIRED FOR FIELD CONNECTION
USE CLASS 1 CONDUCTORS
CONDUCTOR SIZE 28-14 AWG

① 100 BLUE
② 91 BLUE
③ 90 BLUE
④ 92 BLUE
⑤ 94 BLUE
⑥ 83 BLUE
⑦ 84 BLUE
⑧ 60 BLUE

TO DRIVE

ELECTROMECHANICAL BOARD

MK 107 EXTERNAL 24 V SUPPLY O.L. RELAY CONTACTS
MK 105 DRIVE AND D/O/B/T SWITCH
CUSTOMER CONNECTIONS MK 102
RESISTIVE LOAD 24 VDC, 1 A CR9 MAXIMUM
RESISTIVE LOAD 24 VDC, 1 A M4 MAXIMUM
RESISTIVE LOAD 24 VDC, 1 A RL6 MAXIMUM
MK 106 M1, M2, AND M3 CONTACTORS
MK 100 CUSTOMER CONNECTIONS
X58
X55
X56
MK 101 CUSTOMER CONNECTIONS
MK 103 M4, M5 CONTACTORS AND CMS SWITCH
RESISTIVE LOAD 24 VDC, 1 A M3 MAXIMUM
RESISTIVE LOAD 24 VDC, 1 A M5 MAXIMUM
MK 110
TEST CONNECTOR

CONTACT CLOSED INDICATES REQUEST TO RUN
CONTACT CLOSED INDICATES MOTOR 1 SELECTED
CONTACT CLOSED INDICATES FIREMANS OVERRIDE
CUSTOMER SUPPLIED FIREMANS OVERRIDE CONTACT 24 VDC, 2 A
REPLACE WITH CUSTOMER SUPPLIED SAFETY INTERLOCK 24 VDC, 2 A
CUSTOMER SUPPLIED RUN CONTACT 24 VDC, 2 A
CUSTOMER SUPPLIED DAMPER END SWITCH RUN CONTACT 24 VDC, 2 A
CUSTOMER SUPPLIED CONTACT TO SELECT MOTOR 1
CUSTOMER SUPPLIED CONTACT TO SELECT MOTOR 2 24 VDC, 2 A
CONTACTS SHOWN IN FAULT POSITION
CONTACT CLOSED INDICATES MOTOR ON BYPASS
CONTACT CLOSED INDICATES MOTOR ON DRIVE
CONTACT CLOSED INDICATES MOTOR 2 SELECTED

CUSTOMER SETTING
AUTOMATIC BYPASS TIME SELECT
ONLY # 1 ON 30 SECONDS
ONLY # 2 ON 60 SEC.
ONLY # 3 ON 300 SEC
ALL ON 15 SEC.
ALL OFF NO AUTO BYPASS (FACTORY DEFAULT)

FACTORY SETTING
WITHOUT CMS
WITH CMS

S103
S105

