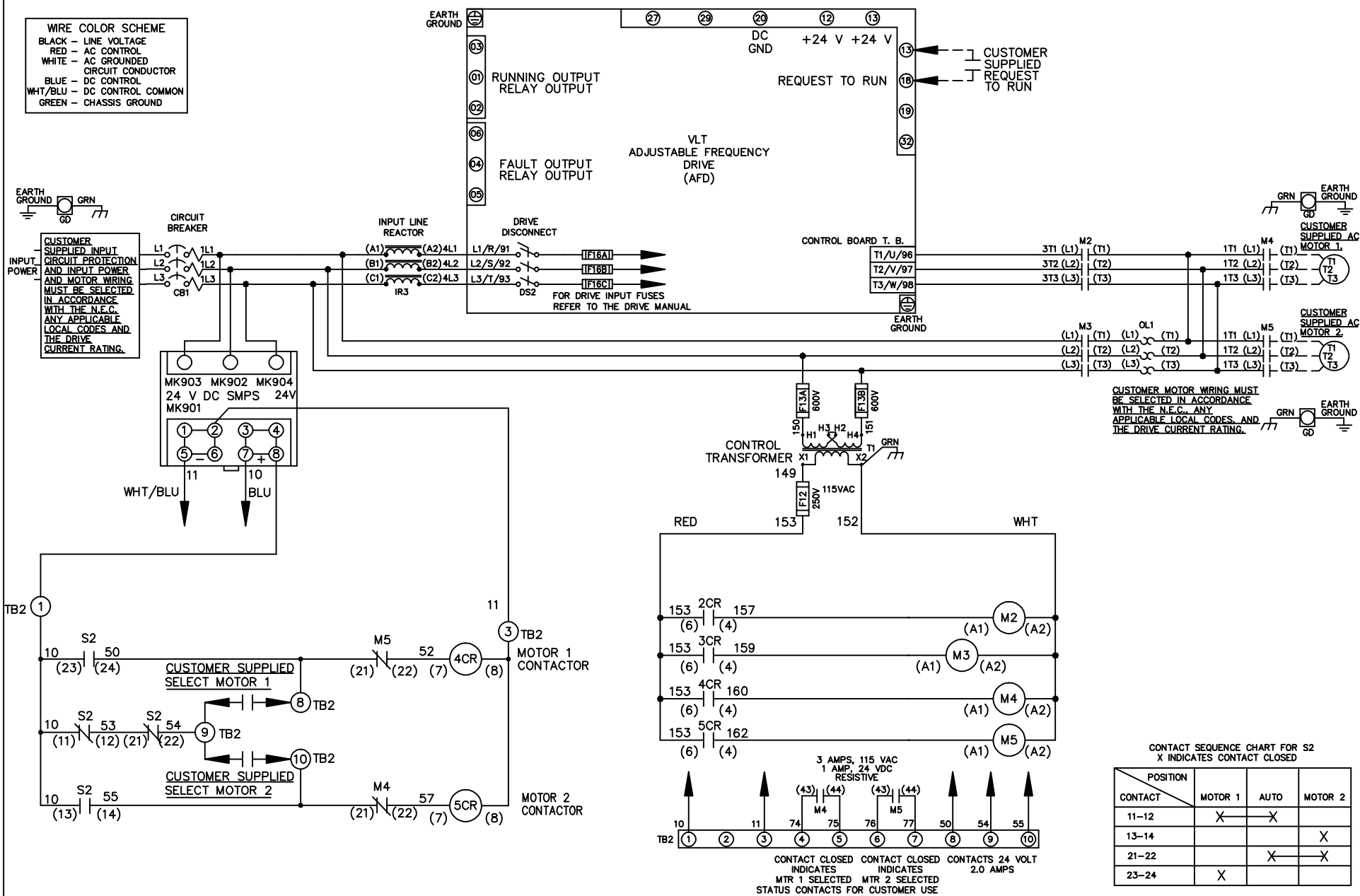
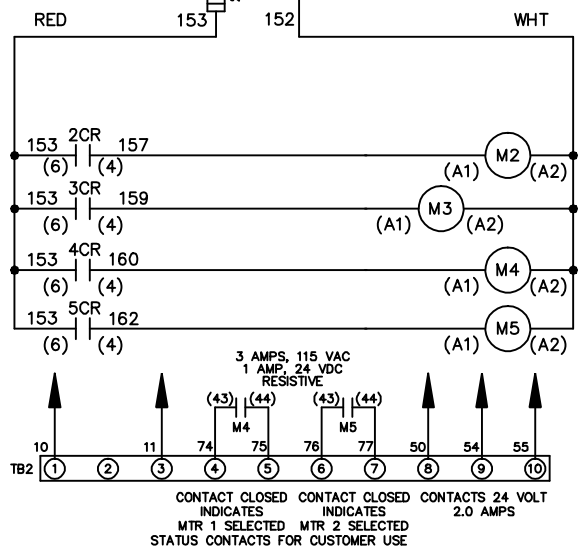


**WIRE COLOR SCHEME**  
 BLACK - LINE VOLTAGE  
 RED - AC CONTROL  
 WHITE - AC GROUNDED  
 WHITE - CIRCUIT CONDUCTOR  
 BLUE - DC CONTROL  
 WHT/BLU - DC CONTROL COMMON  
 GREEN - CHASSIS GROUND



**CUSTOMER SUPPLIED INPUT**  
 CIRCUIT PROTECTION  
 AND INPUT POWER  
 AND MOTOR WIRING  
 MUST BE SELECTED  
 IN ACCORDANCE  
 WITH THE N.E.C.  
 ANY APPLICABLE  
 LOCAL CODES AND  
 THE DRIVE  
 CURRENT RATING.

**CUSTOMER MOTOR WIRING MUST**  
 BE SELECTED IN ACCORDANCE  
 WITH THE N.E.C. ANY  
 APPLICABLE LOCAL CODES, AND  
 THE DRIVE CURRENT RATING.



**CONTACT SEQUENCE CHART FOR S2**  
 X INDICATES CONTACT CLOSED

POSITION	MOTOR 1	AUTO	MOTOR 2
11-12	X	X	
13-14			X
21-22		X	X
23-24	X		

REV	ECN	DATE
A	SP08061	10/08

**- NOTICE -**  
 THIS DOCUMENT CONTAINS PROPRIETARY INFORMATION OF DANFOSS DRIVES. IT IS LOANED BY DANFOSS DRIVES SUBJECT TO THE CONDITIONS THAT IT AND THE INFORMATION EMBODIED THEREIN SHALL BE USED ONLY FOR RECORD AND REFERENCE PURPOSES. SHALL NOT BE USED OR CAUSED TO BE USED IN ANY WAY PREJUDICIAL TO THE INTERESTS OF DANFOSS DRIVES, SHALL NOT BE REPRODUCED OR COPIED IN WHOLE OR IN PART, OR DISCLOSED TO ANYONE WITHOUT THE DIRECT WRITTEN PERMISSION OF DANFOSS DRIVES AND SHALL BE RETURNED UPON REQUEST.

DRN JNW  
 2/14/07  
 APR

NAME 460 VOLT, 2C, CB & DRIVE DISC  
 ,DRIVE FUSE, ECB, FRAME C2N1\_  
 ,REACTOR, CMS

MODEL

*Danfoss*

PAGE 1 OF 2  
 SIZE A  
 DWG NO. 174U1410

