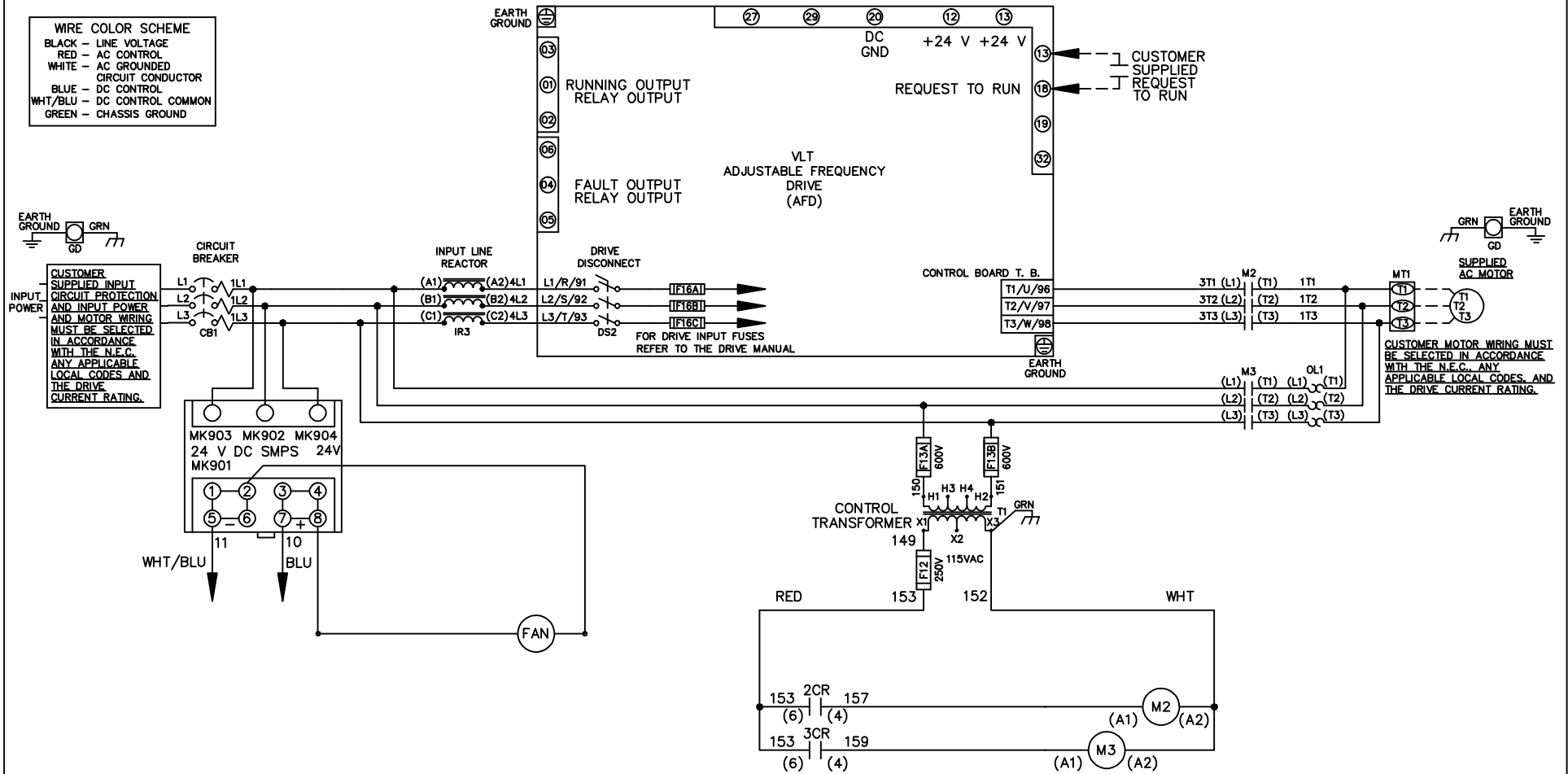


**WIRE COLOR SCHEME**  
 BLACK - LINE VOLTAGE  
 RED - AC CONTROL  
 WHITE - AC GROUNDED  
 WHITE - CIRCUIT CONDUCTOR  
 BLUE - DC CONTROL  
 WHT/BLU - DC CONTROL COMMON  
 GREEN - CHASSIS COMMON



			- NOTICE -		DRN JNW 2/14/07		NAME 208 VOLT,2C,CB & DRIVE DISC ,DRIVE FUSE,ECB,FRAME C2N12 ,REACTOR,SINGLE MTR		<i>Danfoss</i>	
A	SP08061	10/08	THIS DOCUMENT CONTAINS PROPRIETARY INFORMATION OF DANFOSS DRIVES. IT IS LOANED BY DANFOSS DRIVES SUBJECT TO THE CONDITIONS THAT IT AND THE INFORMATION EMBODIED THEREIN SHALL BE USED ONLY FOR RECORD AND REFERENCE PURPOSES, SHALL NOT BE USED OR CAUSED TO BE USED IN ANY WAY PREJUDICIAL TO THE INTERESTS OF DANFOSS DRIVES, SHALL NOT BE REPRODUCED OR COPIED IN WHOLE OR IN PART, OR DISCLOSED TO ANYONE WITHOUT THE DIRECT WRITTEN PERMISSION OF DANFOSS DRIVES AND SHALL BE RETURNED UPON REQUEST.			APR	MODEL	PAGE 1 OF 2	SIZE A	DWG NO. 174U1923
REV	ECN	DATE								

REV	ECN	DATE
A	SP08066	10/08

**NOTICE -**  
 THIS DOCUMENT CONTAINS PROPRIETARY INFORMATION OF DANFOSS DRIVES. IT IS LOANED BY DANFOSS DRIVES SUBJECT TO THE CONDITIONS THAT IT AND THE INFORMATION EMBODIED HEREIN SHALL BE USED ONLY FOR RECORD AND REFERENCE PURPOSES. SHALL NOT BE USED OR COPIED OR BE USED IN ANY MANNER, INCLUDING TO THE INTERESTS OF DANFOSS DRIVES, SHALL NOT BE REPRODUCED OR COPIED IN WHOLE OR IN PART, OR DISCLOSED TO ANYONE WITHOUT THE DIRECT WRITTEN PERMISSION OF DANFOSS DRIVES AND SHALL BE RETURNED UPON REQUEST.

DRN JNW  
 2/14/07  
 APR

NAME 208 VOLT, 2C, CB & DRIVE DISC  
 , DRIVE FUSE, ECB, FRAME C2N12  
 , REACTOR, SINGLE MTR

MODEL

PAGE 2 OF 2

SIZE A

DWG NO. 174U1923



**CUSTOMER CONNECTIONS X56, X57, X59**  
 CLASS 2 POWER SOURCE  
 REQUIRED FOR FIELD CONNECTION  
 USE CLASS 1 CONDUCTORS  
 CONDUCTOR SIZE 28-14 AWG



**ECB BOARD TB1**

① EXTERNAL 24 V SUPPLY X58  
 ②

CUSTOMER MOTOR RUNNING CONTACT X56  
 ① 0-24 VDC MAXIMUM 1 AMPS DC RESISTIVE  
 ②  
 NC ③

NC ④ + 24 V  
 ⑤

NC ⑥  
 NC ⑦ + 24 V  
 ⑧

NC ⑨  
 NC ⑩ + 24 V  
 NC ⑪

NC ⑫  
 18

① SAFETY INTERLOCK X57  
 ② COM

③ CMS MOTOR SELECTED  
 ④

⑤ O.L. TRIP  
 ⑥ M2 STATUS  
 ⑦ M3 STATUS

⑧ BYPASS MODE ENABLE  
 ⑨ BYPASS OVERRIDE  
 ⑩ O.L. RESET

① COM X59  
 ② COM

NC ③  
 NC ④

⑤ DRIVE MODE  
 ⑥ BYPASS MODE  
 ⑦ COM  
 ⑧ COM

TEST CONNECTOR MK 110