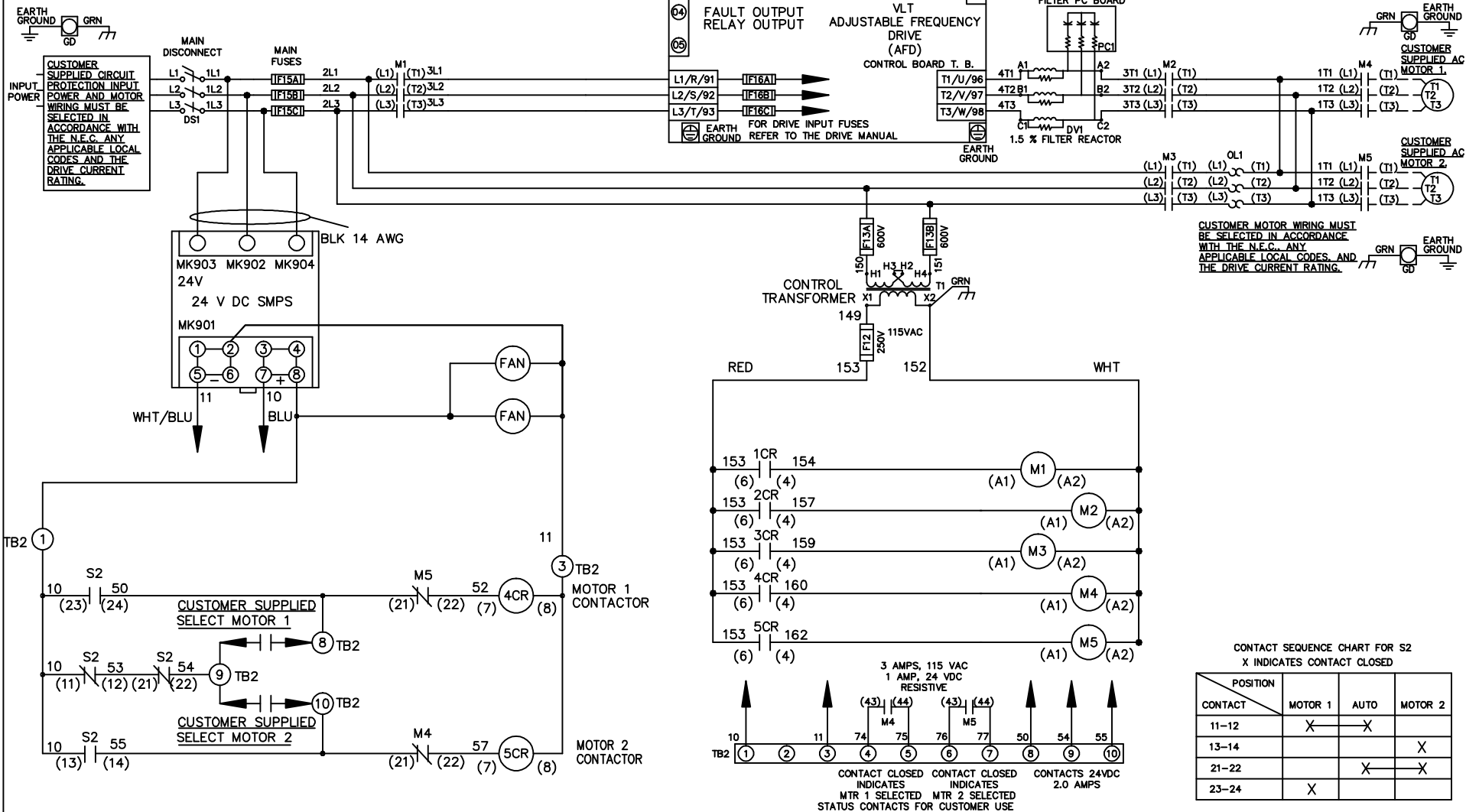


WIRE COLOR SCHEME

- BLACK - LINE VOLTAGE
- RED - AC CONTROL
- WHITE - AC GROUNDED
- WHITE - CIRCUIT CONDUCTOR
- BLUE - DC CONTROL
- WHT/BLU - DC CONTROL COMMON
- GREEN - CHASSIS GROUND



REV	ECN	DATE
A	SP08061	10/08

- NOTICE -

THIS DOCUMENT CONTAINS PROPRIETARY INFORMATION OF DANFOSS DRIVES. IT IS LOANED BY DANFOSS DRIVES SUBJECT TO THE CONDITIONS THAT IT AND THE INFORMATION EMBODIED THEREIN SHALL BE USED ONLY FOR RECORD AND REFERENCE PURPOSES, SHALL NOT BE USED OR CAUSED TO BE USED IN ANY WAY PREJUDICIAL TO THE INTERESTS OF DANFOSS DRIVES, SHALL NOT BE REPRODUCED OR COPIED IN WHOLE OR IN PART, OR DISCLOSED TO ANYONE WITHOUT THE DIRECT WRITTEN PERMISSION OF DANFOSS DRIVES AND SHALL BE RETURNED UPON REQUEST.

DRN JNW
2/14/07
APR

NAME 460 VOLT, 3C, MAIN DISC
, MAIN FUSE, ECB, FRAME C2N12
, DVDT, CMS

MODEL

PAGE 1 OF 2

SIZE A

DWG NO. 174U4090



REV	A	SP08066	10/08
ECN			
DATE			

NOTICE
 THIS DOCUMENT CONTAINS PROPRIETARY INFORMATION OF DANFOSS DRIVES. IT IS LOANED BY DANFOSS DRIVES SUBJECT TO THE CONDITIONS THAT IT AND THE INFORMATION EMBODIED THEREIN SHALL BE USED ONLY FOR RECORD AND REFERENCE PURPOSES. SHALL NOT BE USED OR CAUSED TO BE USED IN ANY WAY PREJUDICIAL TO THE INTERESTS OF DANFOSS DRIVES. SHALL NOT BE REPRODUCED OR COPIED IN WHOLE OR IN PART, OR DISCLOSED TO ANYONE WITHOUT THE DIRECT WRITTEN PERMISSION OF DANFOSS DRIVES AND SHALL BE RETURNED UPON REQUEST.

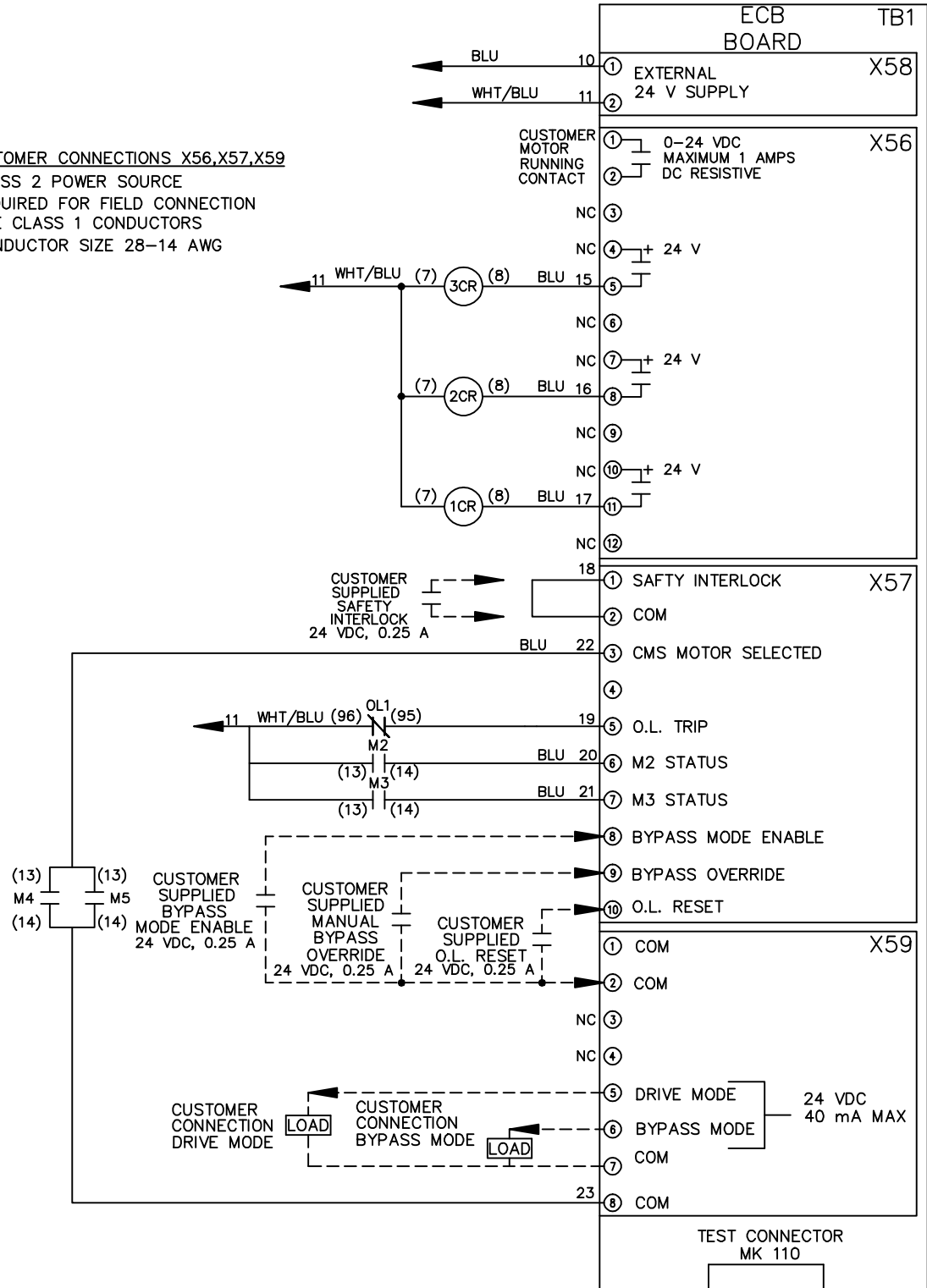
DRN JNW
 2/14/07
 APR

NAME460 VOLT,3C,MAIN DISC
 ,MAIN FUSE,ECB,FRAME C2N12
 ,DVDI,CMS

MODEL
 PAGE 2 OF 2
 SIZE A
 DWG NO. 174U4090



CUSTOMER CONNECTIONS X56,X57,X59
 CLASS 2 POWER SOURCE
 REQUIRED FOR FIELD CONNECTION
 USE CLASS 1 CONDUCTORS
 CONDUCTOR SIZE 28-14 AWG



ECB BOARD TB1

① EXTERNAL 24 V SUPPLY X58
 ②

CUSTOMER MOTOR RUNNING CONTACT X56
 ① 0-24 VDC MAXIMUM 1 AMPS DC RESISTIVE
 ②

- NC ③
- NC ④ + 24 V
- NC ⑤
- NC ⑥
- NC ⑦ + 24 V
- NC ⑧
- NC ⑨
- NC ⑩ + 24 V
- NC ⑪
- NC ⑫

① SAFETY INTERLOCK X57
 ② COM

- ③ CMS MOTOR SELECTED
- ④
- ⑤ O.L. TRIP
- ⑥ M2 STATUS
- ⑦ M3 STATUS
- ⑧ BYPASS MODE ENABLE
- ⑨ BYPASS OVERRIDE
- ⑩ O.L. RESET

① COM X59
 ② COM

- NC ③
- NC ④
- ⑤ DRIVE MODE 24 VDC 40 mA MAX
- ⑥ BYPASS MODE
- ⑦ COM
- ⑧ COM

TEST CONNECTOR MK 110