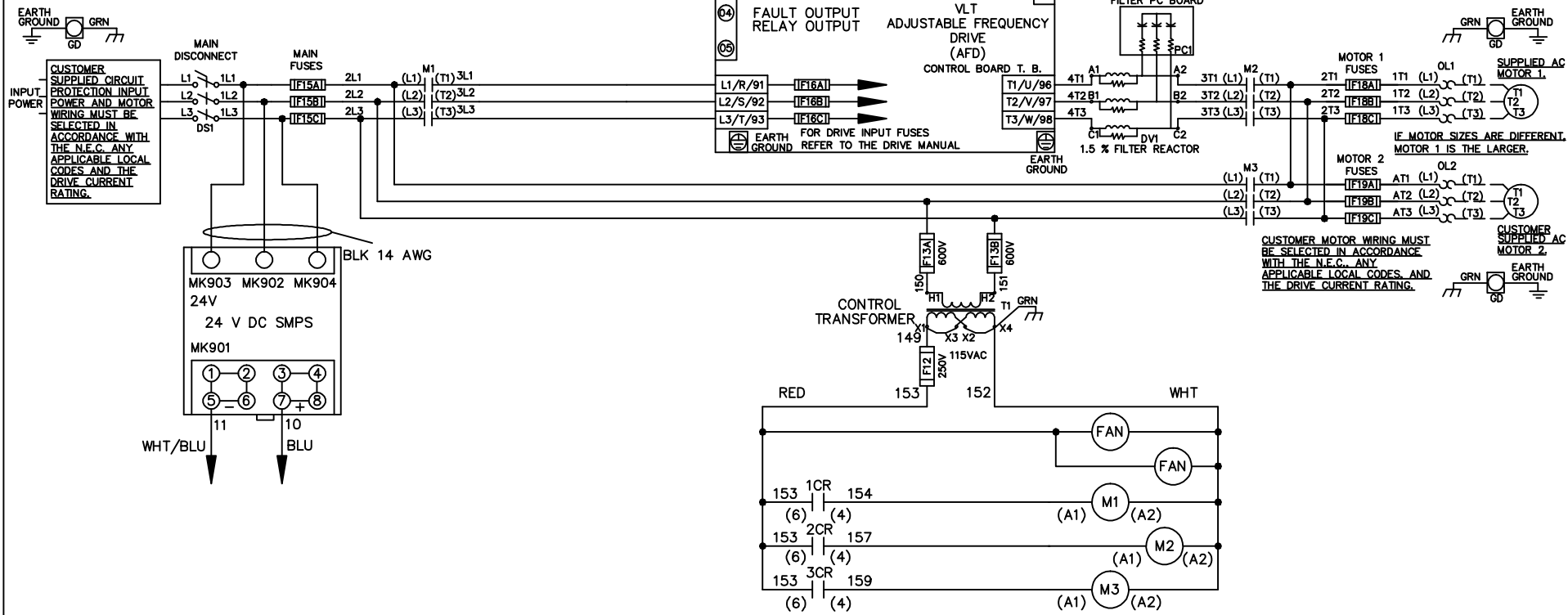


**WIRE COLOR SCHEME**  
 BLACK - LINE VOLTAGE  
 RED - AC CONTROL  
 WHITE - AC GROUNDED  
 WHITE - CIRCUIT CONDUCTOR  
 BLUE - DC CONTROL  
 WHT/BLU - DC CONTROL COMMON  
 GREEN - CHASSIS GROUND



			- NOTICE -		DRN JNW 2/14/07		NAME 600 VOLT,3C,MAIN DISC ,MAIN FUSE,ECB,FRAME D1-D2 ,DVDT,DUAL MTR		<i>Danfoss</i>	
A	SP08061	10/08	THIS DOCUMENT CONTAINS PROPRIETARY INFORMATION OF DANFOSS DRIVES. IT IS LOANED BY DANFOSS DRIVES SUBJECT TO THE CONDITIONS THAT IT AND THE INFORMATION EMBODIED THEREIN SHALL BE USED ONLY FOR RECORD AND REFERENCE PURPOSES, SHALL NOT BE USED OR CAUSED TO BE USED IN ANY WAY PREJUDICIAL TO THE INTERESTS OF DANFOSS DRIVES, SHALL NOT BE REPRODUCED OR COPIED IN WHOLE OR IN PART, OR DISCLOSED TO ANYONE WITHOUT THE DIRECT WRITTEN PERMISSION OF DANFOSS DRIVES AND SHALL BE RETURNED UPON REQUEST.			APR	MODEL	PAGE 1 OF 2	SIZE A	DWG NO. 174U4339
REV	ECN	DATE								

REV	A	SP08066	10/08
ECN			
DATE			

**NOTICE**  
 THIS DOCUMENT CONTAINS PROPRIETARY INFORMATION OF DANFOSS DRIVES. IT IS LOANED BY DANFOSS DRIVES SUBJECT TO THE CONDITIONS THAT IT AND THE INFORMATION EMBODIED THEREIN SHALL BE USED ONLY FOR RECORD AND REFERENCE PURPOSES. SHALL NOT BE USED OR CAUSED TO BE USED IN ANY WAY PREJUDICIAL TO THE INTERESTS OF DANFOSS DRIVES. SHALL NOT BE REPRODUCED OR COPIED IN WHOLE OR IN PART, OR DISCLOSED TO ANYONE WITHOUT THE DIRECT WRITTEN PERMISSION OF DANFOSS DRIVES AND SHALL BE RETURNED UPON REQUEST.

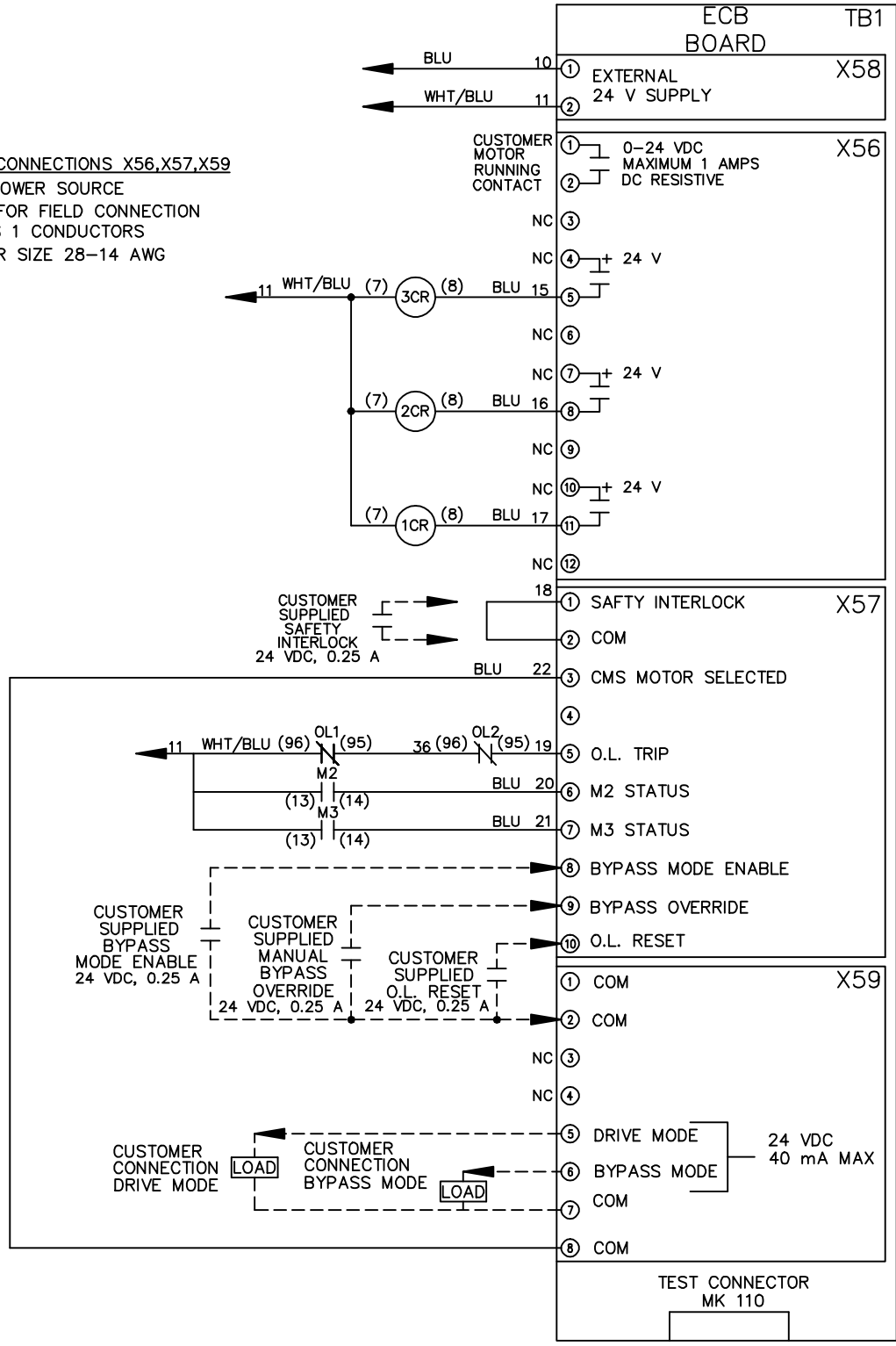
DRN JNW  
 2/14/07  
 APR

NAME600 VOLT,3C,MAIN DISC  
 ,MAIN FUSE,ECB,FRAME D1-D2  
 ,DVDI,DUAL MTR

MODEL  
 PAGE 2 OF 2  
 SIZE A  
 DWG NO. 174U4339



CUSTOMER CONNECTIONS X56,X57,X59  
 CLASS 2 POWER SOURCE  
 REQUIRED FOR FIELD CONNECTION  
 USE CLASS 1 CONDUCTORS  
 CONDUCTOR SIZE 28-14 AWG



ECB BOARD TB1

EXTERNAL 24 V SUPPLY X58  
 ①  
 ②

CUSTOMER MOTOR RUNNING CONTACT X56  
 ① 0-24 VDC  
 ② MAXIMUM 1 AMPS DC RESISTIVE

NC ③  
 NC ④ + 24 V  
 NC ⑥  
 NC ⑦ + 24 V  
 NC ⑨  
 NC ⑩ + 24 V  
 NC ⑫

SAFETY INTERLOCK X57  
 ①  
 ② COM

CMS MOTOR SELECTED  
 ③  
 ④  
 ⑤ O.L. TRIP  
 ⑥ M2 STATUS  
 ⑦ M3 STATUS  
 ⑧ BYPASS MODE ENABLE  
 ⑨ BYPASS OVERRIDE  
 ⑩ O.L. RESET

COM X59  
 ①  
 ② COM

NC ③  
 NC ④  
 ⑤ DRIVE MODE  
 ⑥ BYPASS MODE 24 VDC 40 mA MAX  
 ⑦ COM  
 ⑧ COM

TEST CONNECTOR MK 110