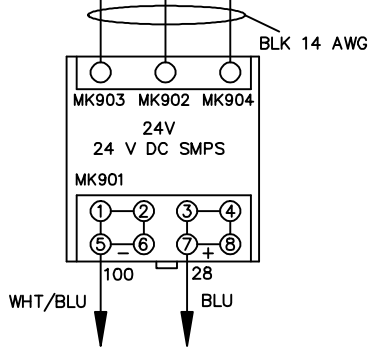
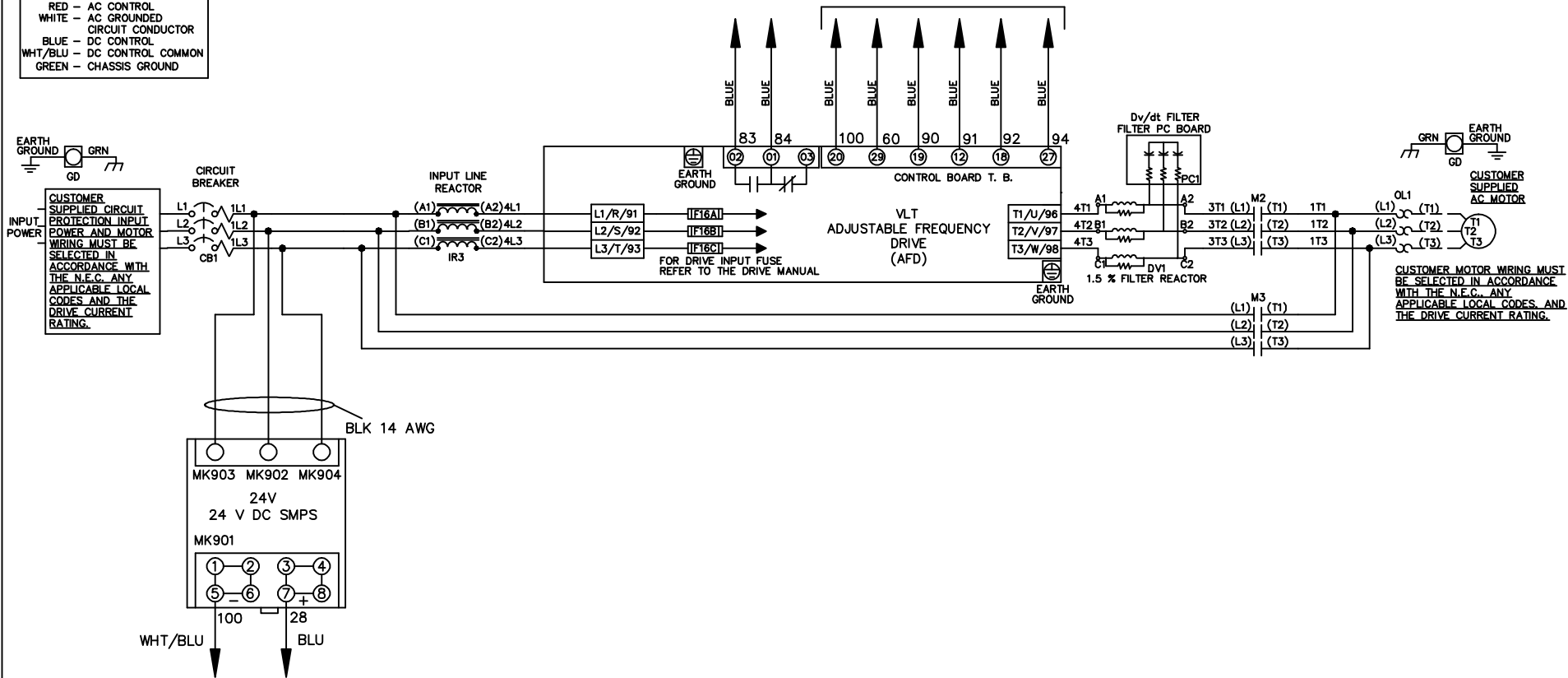


WIRE COLOR SCHEME
 BLACK - LINE VOLTAGE
 RED - AC CONTROL
 WHITE - AC GROUNDED
 WHITE - CIRCUIT CONDUCTOR
 BLUE - DC CONTROL
 WHT/BLU - DC CONTROL COMMON
 GREEN - CHASSIS GROUND

* ALL CONTROL WIRES ARE BLUE EXCEPT WHERE NOTED. TO ELECTROMECHANICAL RELAY BOARD



| | | | | | | | | | | |
|-----|---------|-------|---|--|---------|-------|--|--------|--|----------|
| | | | -NOTICE- | | DRN JNW | | NAME 208-600VOLT, 2C, CB | | THE TRANE COMPANY A DIVISION OF AMERICAN STANDARD INC. | |
| | | | THIS DRAWING IS PROPRIETARY AND SHALL NOT BE COPIED OR ITS CONTENTS DISCLOSED TO OUTSIDE PARTIES WITHOUT THE WRITTEN CONSENT OF THE TRANE COMPANY | | 2/14/07 | | ,DRIVE FUSE, EMB2, FRAME A5-B1 , REACTOR & DVDT, SINGLE MTR | | | |
| A | SP08061 | 10/08 | | | APR | MODEL | PAGE 1 OF 2 | SIZE A | DWG NO. | 174U4816 |
| REV | ECN | DATE | | | | | | | | |

| | | |
|-----|---------|-------|
| REV | ECN | DATE |
| A | SP08066 | 10/08 |

| | |
|---|-------|
| CONTACT SEQUENCE CHART FOR S1 X INDICATES CONTACT CLOSED | |
| POSITION | DRIVE |
| 13-14 | OFF |
| 23-24 | X |

THIS DRAWING IS PROPRIETARY AND SHALL NOT BE COPIED OR ITS CONTENTS DISCLOSED TO OUTSIDE PARTIES WITHOUT THE WRITTEN CONSENT OF THE TRANE COMPANY

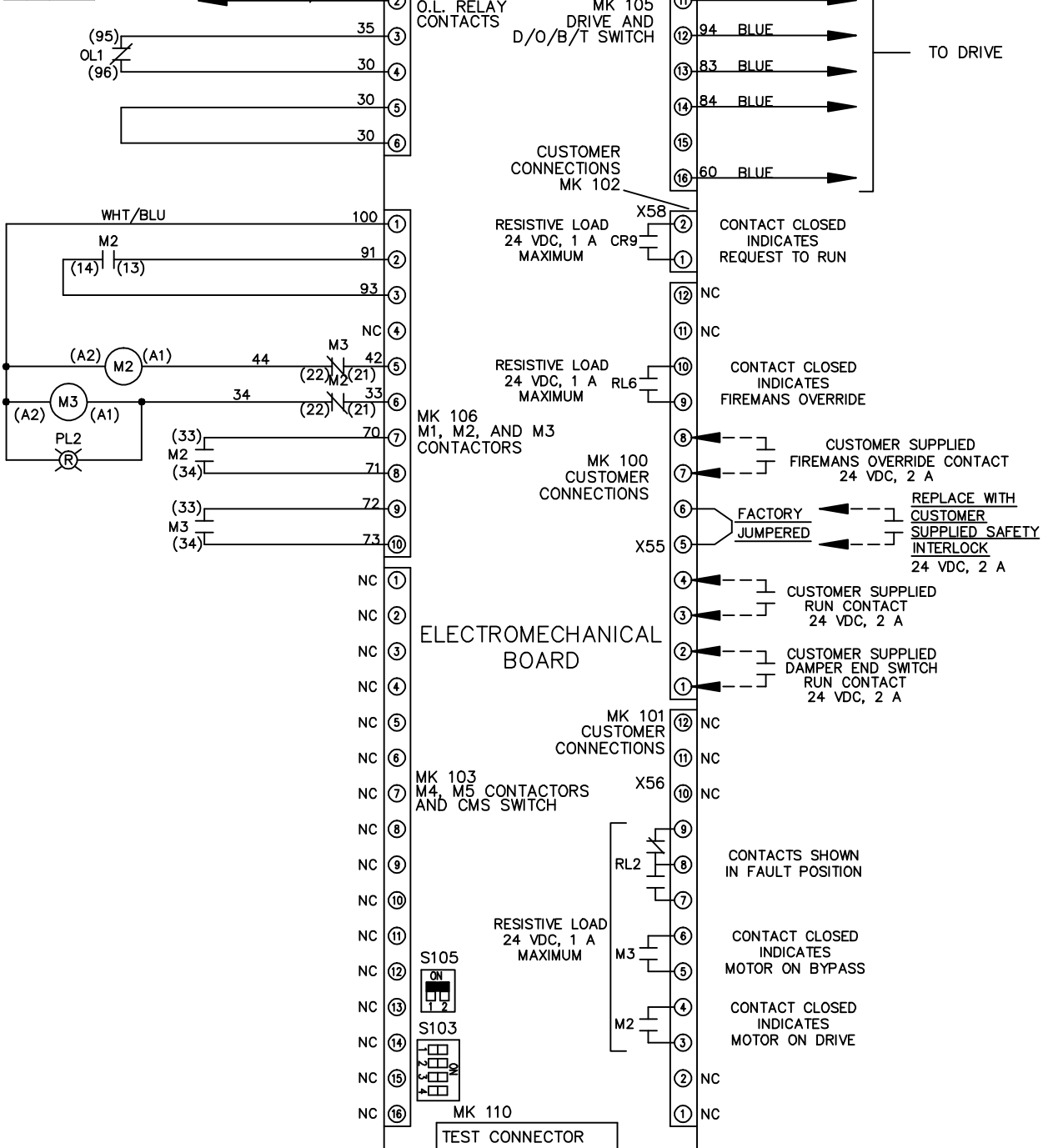
DRN JNW
2/14/07

NAME 208-600VOLT, 2C, CB
, DRIVE FUSE, EMB2, FRAME A5-B1
, REACTOR & DVDI, SINGLE MTR

MODEL
PAGE 2 OF 2

SIZE A
DWG NO. 174U4816

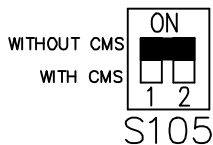
THE TRANE COMPANY
A DIVISION OF
AMERICAN STANDARD INC.



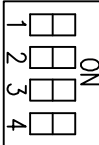
CUSTOMER CONNECTIONS X55, X56, X58
CLASS 2 POWER SOURCE
REQUIRED FOR FIELD CONNECTION
USE CLASS 1 CONDUCTORS
CONDUCTOR SIZE 28-14 AWG

ELECTROMECHANICAL BOARD

FACTORY SETTING



S103



CUSTOMER SETTING
AUTOMATIC BYPASS TIME SELECT
ONLY # 1 ON 30 SECONDS
ONLY # 2 ON 60 SEC.
ONLY # 3 ON 300 SEC
ALL ON 15 SEC.
ALL OFF NO AUTO BYPASS (FACTORY DEFAULT)