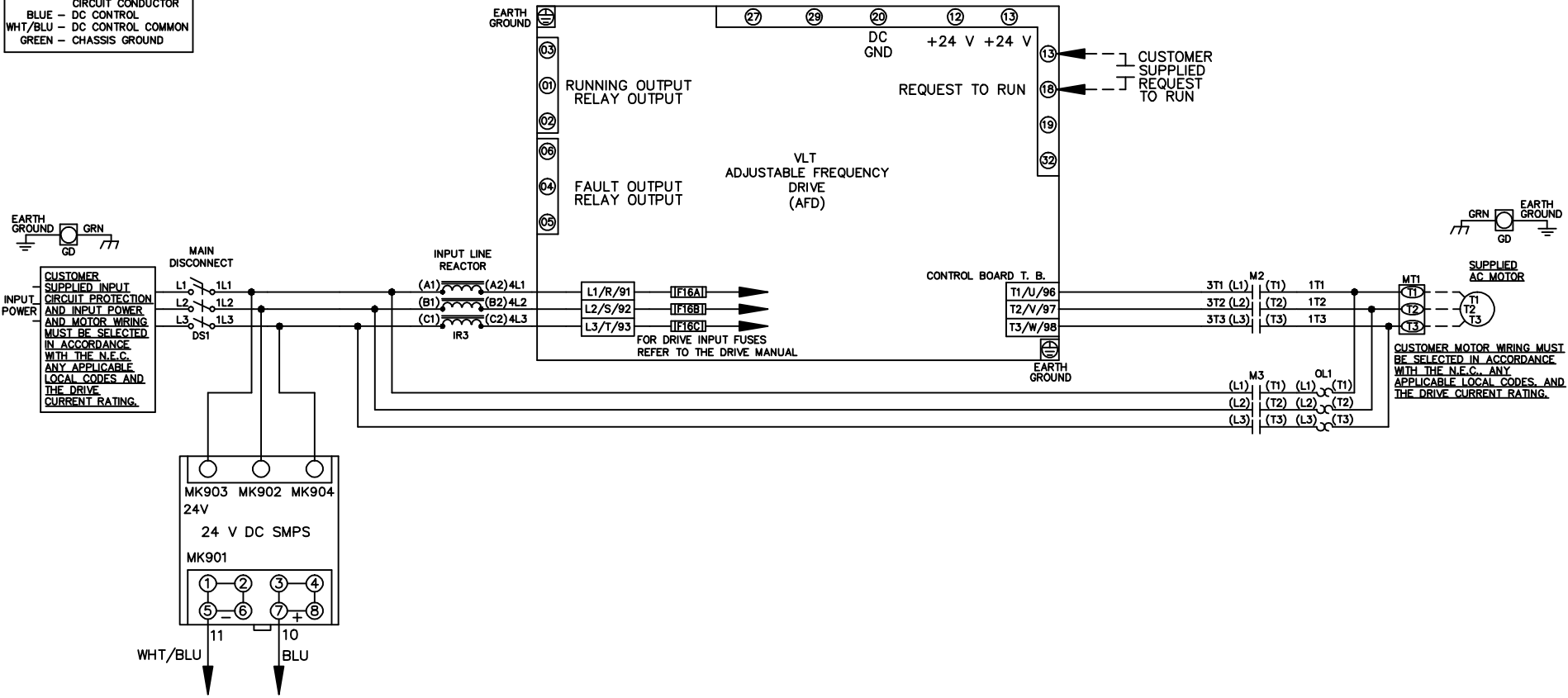


WIRE COLOR SCHEME
 BLACK - LINE VOLTAGE
 RED - AC CONTROL
 WHITE - AC GROUNDED
 CIRCUIT CONDUCTOR
 BLUE - DC CONTROL
 WHT/BLU - DC CONTROL COMMON
 GREEN - CHASSIS GROUND



-NOTICE-

THIS DRAWING IS PROPRIETARY AND SHALL NOT BE COPIED OR ITS CONTENTS DISCLOSED TO OUTSIDE PARTIES WITHOUT THE WRITTEN CONSENT OF THE TRANE COMPANY

DRN JNW
2/14/07

APR

NAME 208-600VOLT, 2C, MAIN DISC
 ,DRIVE FUSE, ECB, FRAME A5-B1
 ,REACTOR, SINGLE MTR

MODEL

PAGE 1 OF 2

SIZE A

DWG NO.

THE TRANE COMPANY
 A DIVISION OF
 AMERICAN STANDARD INC.

174U4891

A	SP08061	10/08
REV	ECN	DATE

REV	A	ECN	SP08066	DATE	10/08
-----	---	-----	---------	------	-------

THIS DRAWING IS PROPRIETARY AND SHALL NOT BE COPIED OR ITS CONTENTS DISCLOSED TO OUTSIDE PARTIES WITHOUT THE WRITTEN CONSENT OF THE TRANE COMPANY

-NOTICE-

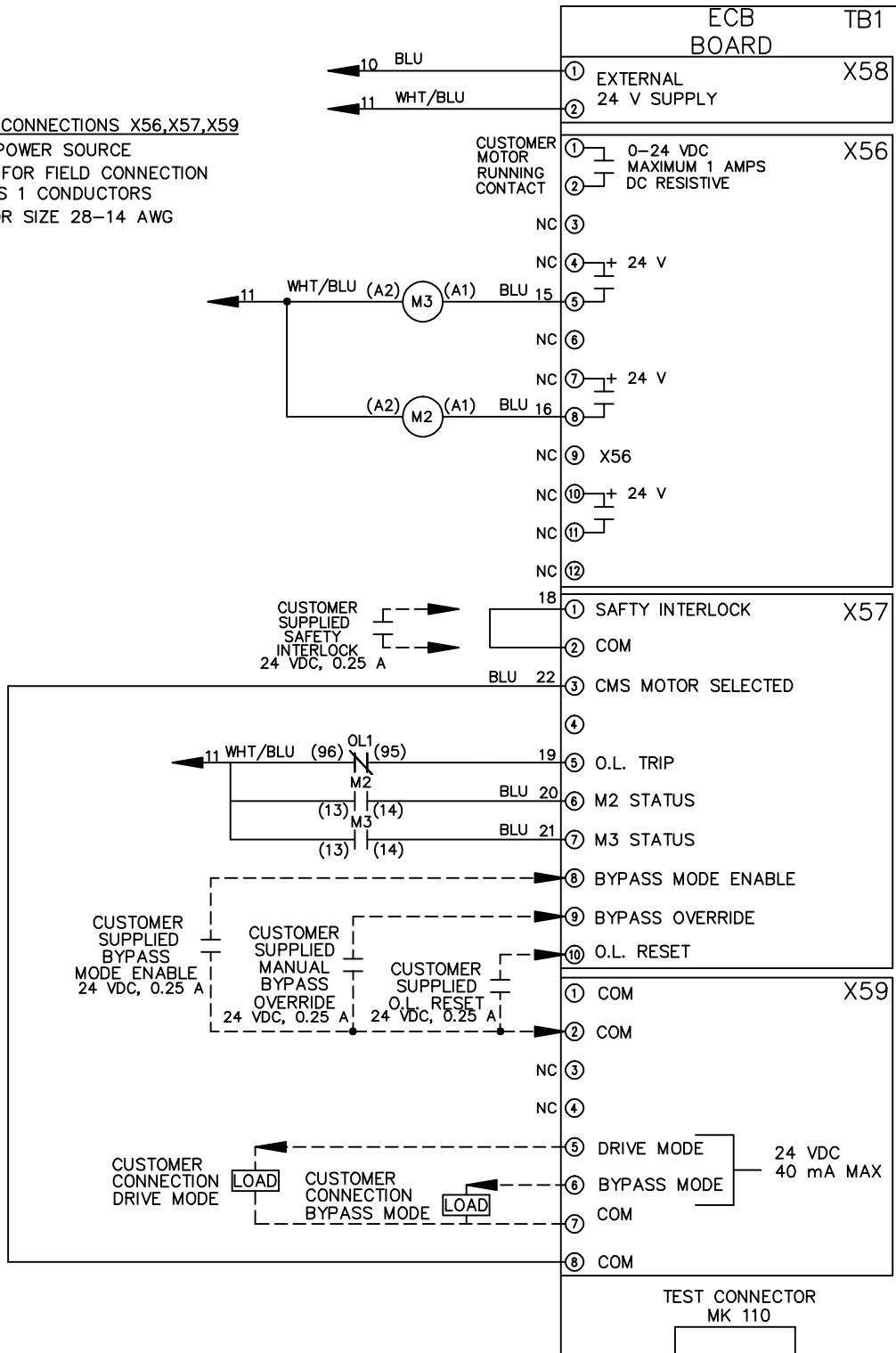
DRN JNW
 2/14/07
 APR

NAME 208-600VOLT,2C,MAIN DISC
 ,DRIVE FUSE,ECB,FRAME A5-B1
 ,REACTOR,SINGLE MTR
 MODEL
 PAGE 2 OF 2
 SIZE A
 DWG NO. 174U4891

THE TRANE COMPANY
 A DIVISION OF
 AMERICAN STANDARD INC.

CUSTOMER CONNECTIONS X56,X57,X59

CLASS 2 POWER SOURCE
 REQUIRED FOR FIELD CONNECTION
 USE CLASS 1 CONDUCTORS
 CONDUCTOR SIZE 28-14 AWG



ECB BOARD TB1

① EXTERNAL
 ② 24 V SUPPLY

① 0-24 VDC
 MAXIMUM 1 AMPS
 ② DC RESISTIVE

① SAFTY INTERLOCK

② COM

③ CMS MOTOR SELECTED

④

⑤ O.L. TRIP

⑥ M2 STATUS

⑦ M3 STATUS

⑧ BYPASS MODE ENABLE

⑨ BYPASS OVERRIDE

⑩ O.L. RESET

① COM

② COM

NC ③

NC ④

⑤ DRIVE MODE

⑥ BYPASS MODE

⑦ COM

⑧ COM

TEST CONNECTOR
MK 110