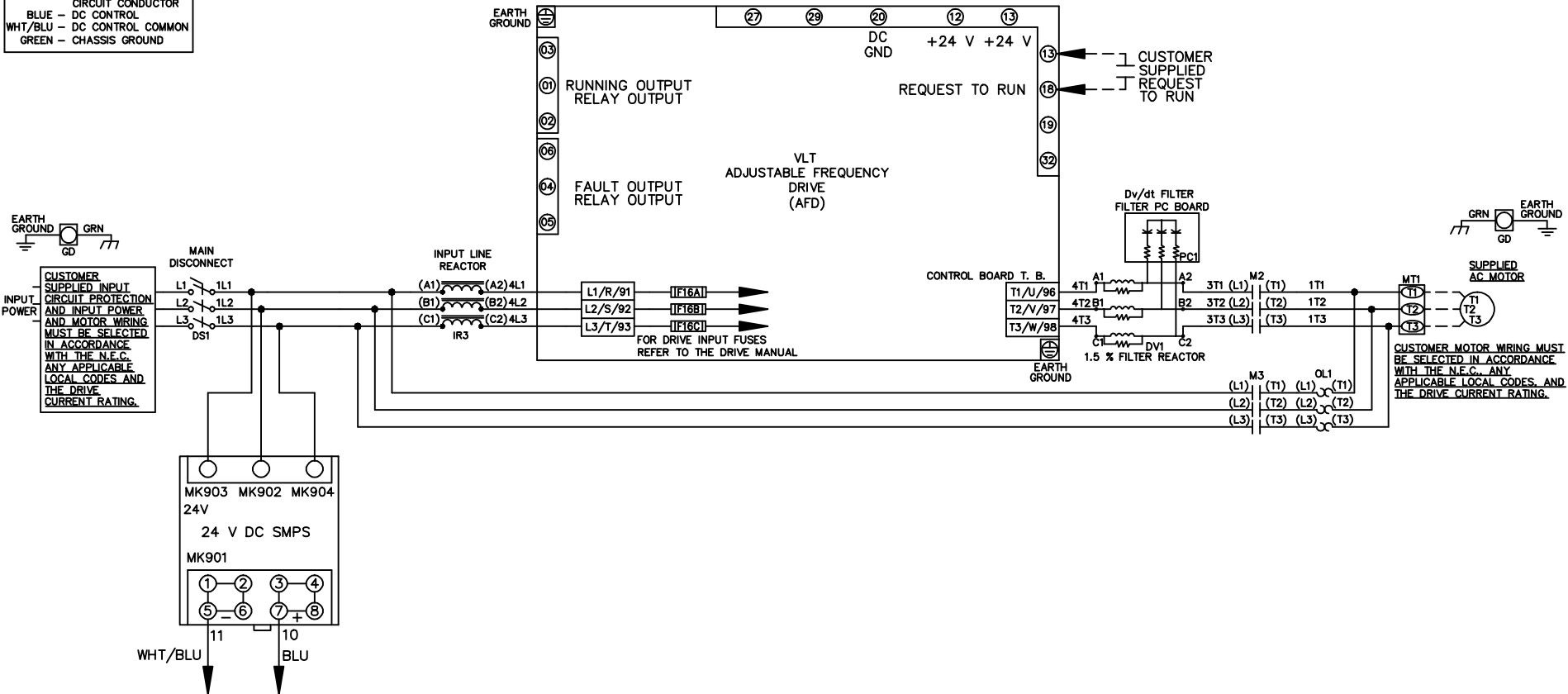


**WIRE COLOR SCHEME**  
 BLACK - LINE VOLTAGE  
 RED - AC CONTROL  
 WHITE - AC GROUNDED  
 CIRCUIT CONDUCTOR  
 BLUE - DC CONTROL  
 WHT/BLU - DC CONTROL COMMON  
 GREEN - CHASSIS GROUND



-NOTICE-

THIS DRAWING IS PROPRIETARY AND SHALL NOT BE COPIED OR ITS CONTENTS DISCLOSED TO OUTSIDE PARTIES WITHOUT THE WRITTEN CONSENT OF THE TRANE COMPANY

DRN JNW  
2/14/07

APR

NAME 208-600VOLT, 2C, MAIN DISC  
 ,DRIVE FUSE, ECB, FRAME A5-B1  
 ,REACTOR & DVDT, SINGLE MTR

MODEL

PAGE 1 OF 2

SIZE A

DWG NO.

174U4899

THE TRANE COMPANY  
 A DIVISION OF  
 AMERICAN STANDARD INC.

|     |         |       |
|-----|---------|-------|
| A   | SP08061 | 10/08 |
| REV | ECN     | DATE  |

|     |   |     |         |      |       |
|-----|---|-----|---------|------|-------|
| REV | A | ECN | SP08066 | DATE | 10/08 |
|-----|---|-----|---------|------|-------|

THIS DRAWING IS PROPRIETARY AND SHALL NOT BE COPIED OR ITS CONTENTS DISCLOSED TO OUTSIDE PARTIES WITHOUT THE WRITTEN CONSENT OF THE TRANE COMPANY

-NOTICE-

DRN JNW  
 2/14/07  
 APR

NAME 208-600VOLT,2C,MAIN DISC  
 ,DRIVE FUSE,ECB,FRAME A5-B1  
 ,REACTOR & DVDI,SINGLE MTR

MODEL

SIZE A

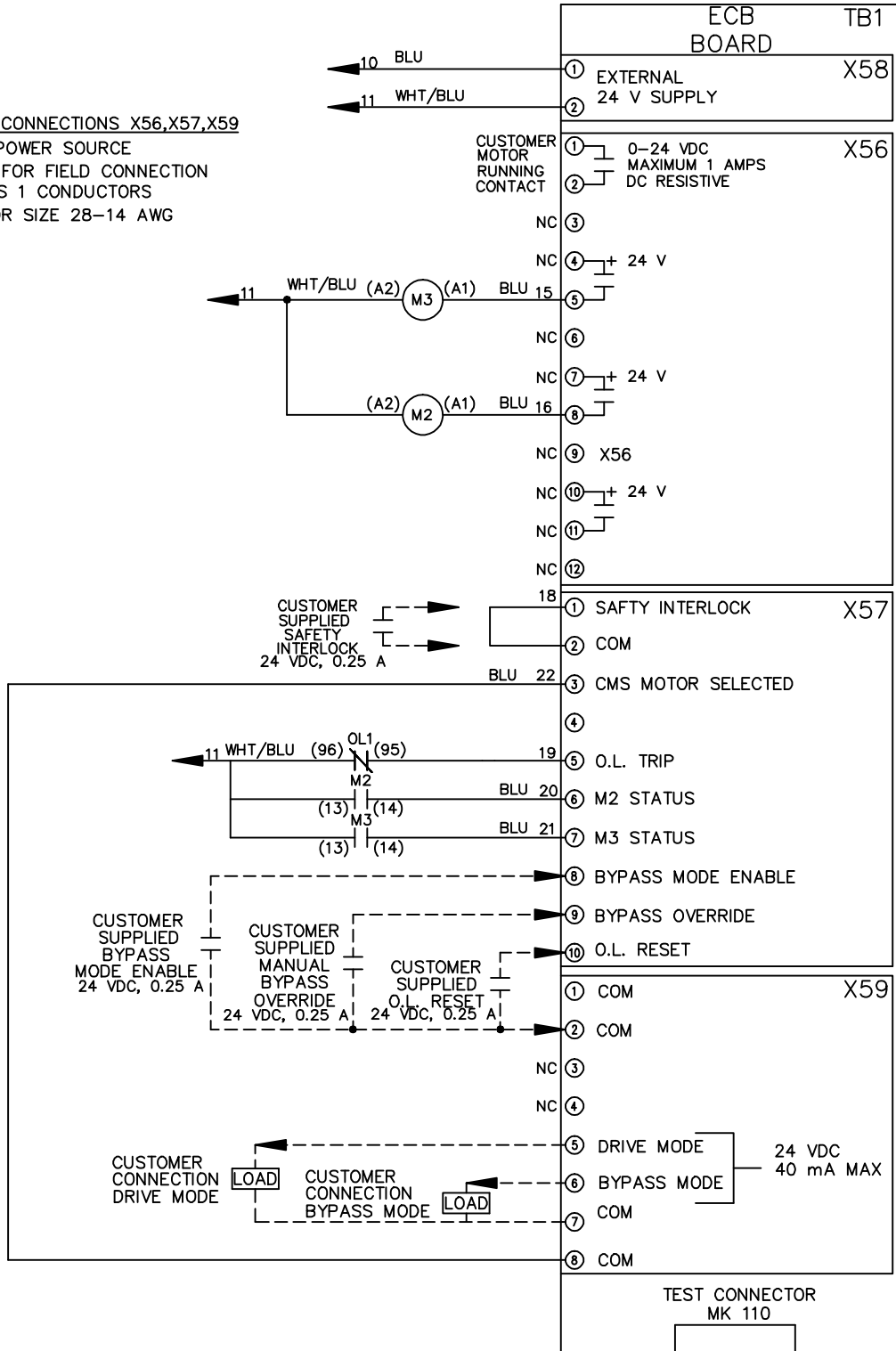
DWG NO.

174U4899

THE TRANE COMPANY  
 A DIVISION OF  
 AMERICAN STANDARD INC.

**CUSTOMER CONNECTIONS X56,X57,X59**

CLASS 2 POWER SOURCE  
 REQUIRED FOR FIELD CONNECTION  
 USE CLASS 1 CONDUCTORS  
 CONDUCTOR SIZE 28-14 AWG



**ECB BOARD TB1**

① EXTERNAL  
 ② 24 V SUPPLY

① 0-24 VDC  
 MAXIMUM 1 AMPS  
 ② DC RESISTIVE

① SAFTY INTERLOCK

② COM

③ CMS MOTOR SELECTED

④

⑤ O.L. TRIP

⑥ M2 STATUS

⑦ M3 STATUS

⑧ BYPASS MODE ENABLE

⑨ BYPASS OVERRIDE

⑩ O.L. RESET

① COM

② COM

NC ③

NC ④

⑤ DRIVE MODE

⑥ BYPASS MODE

⑦ COM

⑧ COM

TEST CONNECTOR  
MK 110

24 VDC  
40 mA MAX