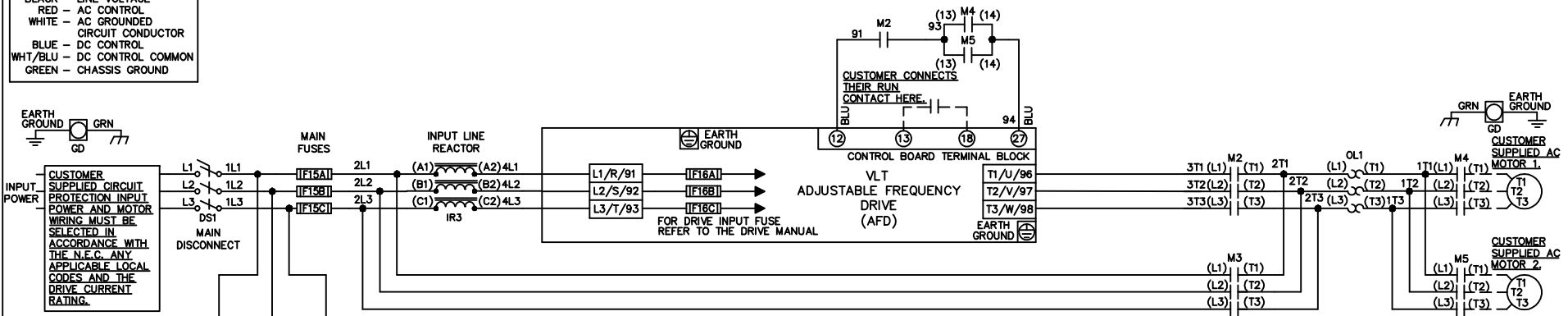


**WIRE COLOR SCHEME**  
 BLACK - LINE VOLTAGE  
 RED - AC CONTROL  
 WHITE - AC GROUNDED  
 BLUE - DC CONTROL  
 WHT/BLU - DC CONTROL COMMON  
 GREEN - CHASSIS GROUND

\* ALL CONTROL WIRES ARE BLUE EXCEPT WHERE NOTED.

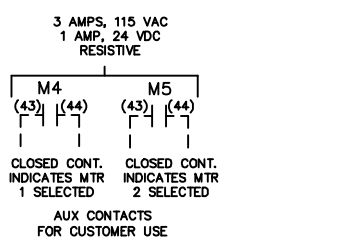
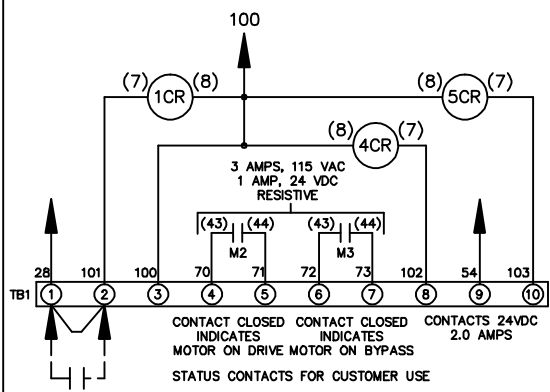


CONTACT SEQUENCE CHART FOR S2  
X INDICATES CONTACT CLOSED

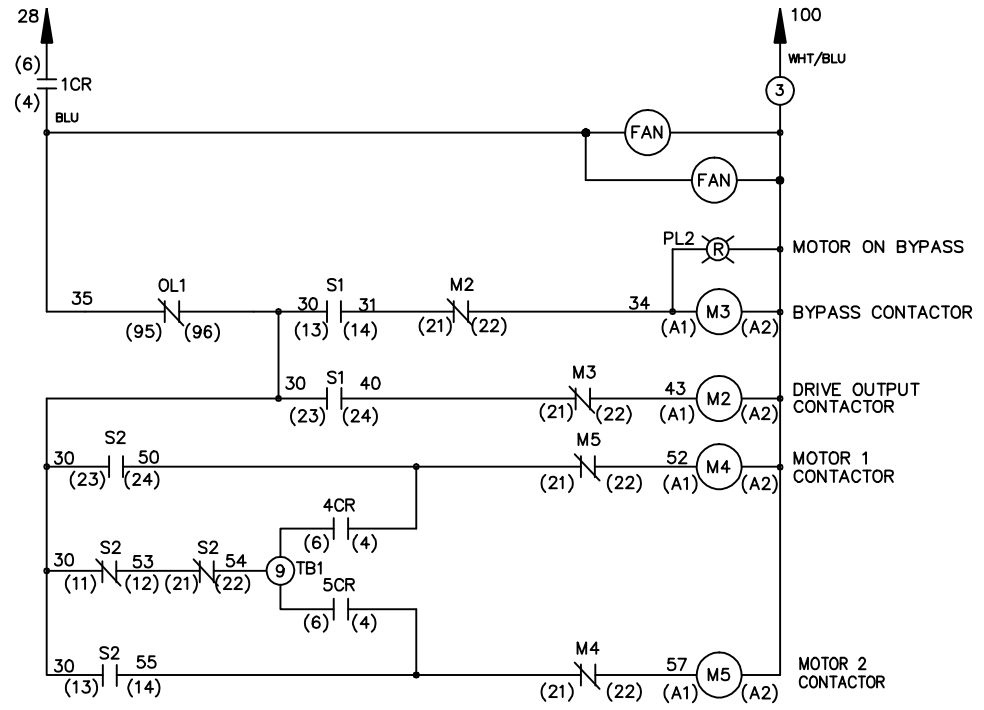
| POSITION | MOTOR 1 | AUTO | MOTOR 2 |
|----------|---------|------|---------|
| 11-12    | X       | X    |         |
| 13-14    |         |      | X       |
| 21-22    | X       | X    |         |
| 23-24    | X       |      |         |

CONTACT SEQUENCE CHART FOR S1  
X INDICATES CONTACT CLOSED

| POSITION | DRIVE | OFF | BYPASS |
|----------|-------|-----|--------|
| 13-14    |       |     | X      |
| 23-24    | X     |     |        |



CUSTOMER MOTOR WIRING MUST BE SELECTED IN ACCORDANCE WITH THE N.E.C. ANY APPLICABLE LOCAL CODES AND THE DRIVE CURRENT RATING.



CUSTOMER SUPPLIED SAFETY INTERLOCK, FACTORY JUMPERED 24 VDC, 2 A

WARNING DO NOT CONNECT ANY EXTERNAL DEVICES TO 28, 101, AND 100

|   |     |      |         |                              |       |  |       |             |        |
|---|-----|------|---------|------------------------------|-------|--|-------|-------------|--------|
| -NOTICE-  |     |      | DRNJNW  | NAME208-600VOLT,2C,MAIN DISC |       | THE TRANE COMPANY<br>A DIVISION OF<br>AMERICAN STANDARD INC. |       |             |        |
| THIS DRAWING IS PROPRIETARY AND SHALL NOT BE COPIED OR ITS CONTENTS DISCLOSED TO OUTSIDE PARTIES WITHOUT THE WRITTEN CONSENT OF THE TRANE COMPANY |     |      | 2/14/07 | ,MAIN FUSE,EMB,FRAME C1N12   |       |  |       |             |        |
|   |     |      | A       | SP08061                      | 10/08 | APR  | MODEL | PAGE 1 OF 1 | SIZE A |
| REV   | ECN | DATE |         |                              |       |  |       |             |        |