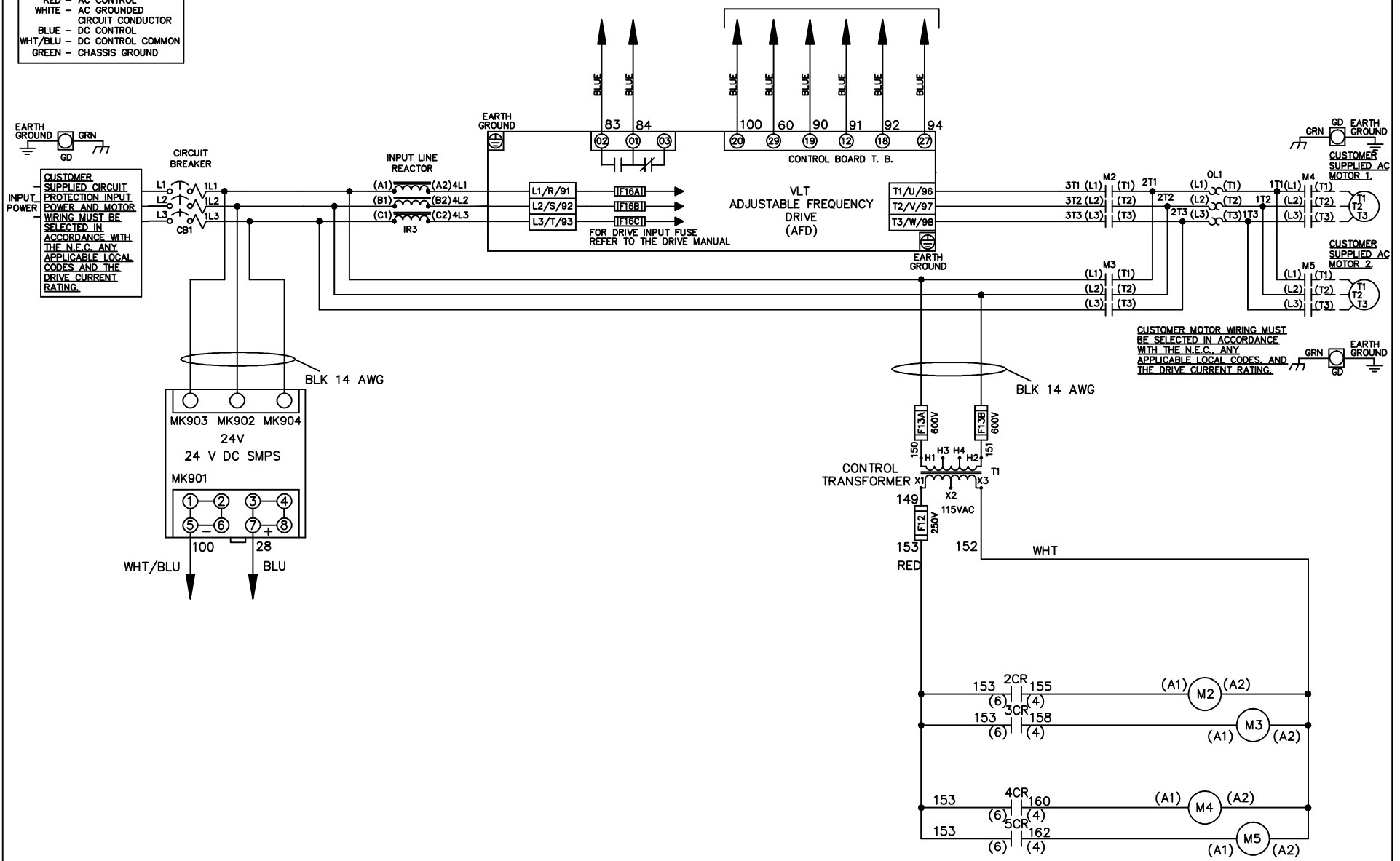


**WIRE COLOR SCHEME**  
 BLACK - LINE VOLTAGE  
 RED - AC CONTROL  
 WHITE - AC GROUND  
 BLUE - DC CONTROL  
 WHT/BLU - DC CONTROL COMMON  
 GREEN - CHASSIS GROUND

\* ALL CONTROL WIRES ARE BLUE EXCEPT WHERE NOTED. TO ELECTROMECHANICAL RELAY BOARD



CUSTOMER MOTOR WIRING MUST BE SELECTED IN ACCORDANCE WITH THE N.E.C. ANY APPLICABLE LOCAL CODES AND THE DRIVE CURRENT RATING.

-NOTICE-

THIS DRAWING IS PROPRIETARY AND SHALL NOT BE COPIED OR ITS CONTENTS DISCLOSED TO OUTSIDE PARTIES WITHOUT THE WRITTEN CONSENT OF THE TRANE COMPANY

DRN JNW  
2/8/07

NAME208 VOLT,2C,CB  
,DRIVE FUSE,EMB2,FRAME C2N1\_  
,REACTOR,CMS

THE TRANE COMPANY  
A DIVISION OF  
AMERICAN STANDARD INC.

|     |         |       |
|-----|---------|-------|
| A   | SP08061 | 10/08 |
| REV | ECN     | DATE  |

APR

MODEL

PAGE 1 OF 2

SIZE A

DWG NO.

174U5485

|     |         |      |       |                              |     |       |             |      |          |
|-----|---------|------|-------|------------------------------|-----|-------|-------------|------|----------|
| REV | A       | ECON | DATE  | DRN JNW                      | APR | MODEL | PAGE 2 OF 2 | SIZE | DWG NO.  |
|     | SP08066 |      | 10/08 | 2/14/07                      |     |       | 2           | A    | 174U5485 |
|     |         |      |       | NAME 208 VOLT, 2C, CB        |     |       |             |      |          |
|     |         |      |       | DRIVE FUSE, EMB2, FRAME C2N1 |     |       |             |      |          |
|     |         |      |       | REACTOR, CMS                 |     |       |             |      |          |
|     |         |      |       | THE TRANE COMPANY            |     |       |             |      |          |
|     |         |      |       | A DIVISION OF                |     |       |             |      |          |
|     |         |      |       | AMERICAN STANDARD INC.       |     |       |             |      |          |

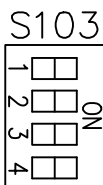
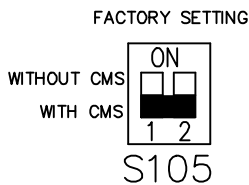
CONTACT SEQUENCE CHART FOR S1  
X INDICATES CONTACT CLOSED

| POSITION | CONTACT |
|----------|---------|
| DRIVE    | 13-14   |
| OFF      | 23-24   |
| BYPASS   | 23-24   |

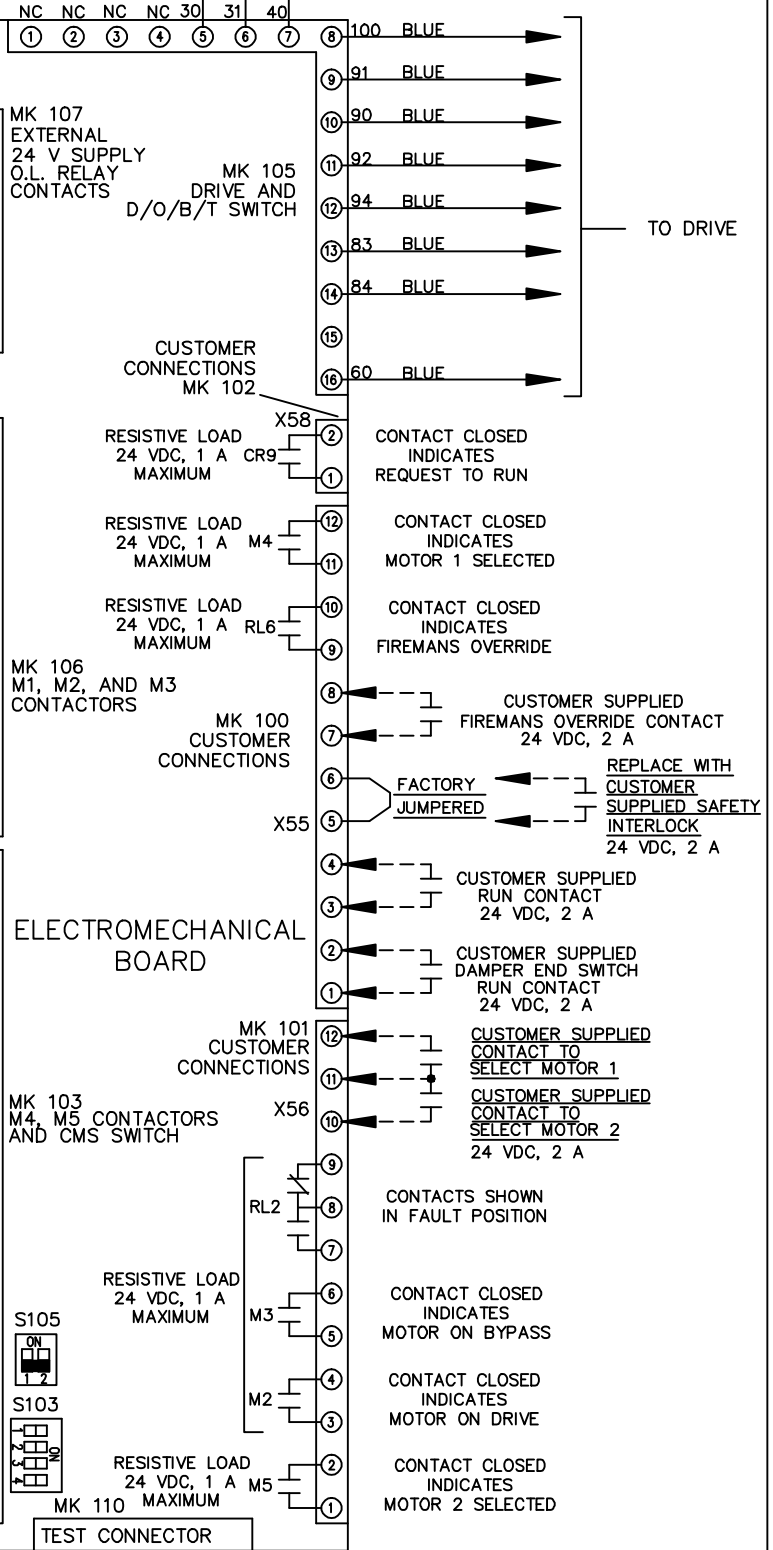


CONTACT SEQUENCE CHART FOR S2  
X INDICATES CONTACT CLOSED

| POSITION | CONTACT |
|----------|---------|
| MOTOR 1  | 11-12   |
| AUTO     | 13-14   |
| MOTOR 2  | 21-22   |
|          | 23-24   |



CUSTOMER CONNECTIONS X55, X56, X58  
CLASS 2 POWER SOURCE  
REQUIRED FOR FIELD CONNECTION  
USE CLASS 1 CONDUCTORS  
CONDUCTOR SIZE 28-14 AWG



CUSTOMER SUPPLIED  
FIREMANS OVERRIDE CONTACT  
24 VDC, 2 A

REPLACE WITH  
CUSTOMER  
SUPPLIED SAFETY  
INTERLOCK  
24 VDC, 2 A

CUSTOMER SUPPLIED  
RUN CONTACT  
24 VDC, 2 A

CUSTOMER SUPPLIED  
DAMPER END SWITCH  
RUN CONTACT  
24 VDC, 2 A

CUSTOMER SUPPLIED  
CONTACT TO  
SELECT MOTOR 1

CUSTOMER SUPPLIED  
CONTACT TO  
SELECT MOTOR 2  
24 VDC, 2 A

CONTACTS SHOWN  
IN FAULT POSITION

CONTACT CLOSED  
INDICATES  
MOTOR ON BYPASS

CONTACT CLOSED  
INDICATES  
MOTOR ON DRIVE

CONTACT CLOSED  
INDICATES  
MOTOR 2 SELECTED

CONTACT CLOSED  
INDICATES  
REQUEST TO RUN

CONTACT CLOSED  
INDICATES  
MOTOR 1 SELECTED

CONTACT CLOSED  
INDICATES  
FIREMANS OVERRIDE

CONTACT CLOSED  
INDICATES  
MOTOR ON BYPASS

CONTACT CLOSED  
INDICATES  
MOTOR ON DRIVE

CONTACT CLOSED  
INDICATES  
MOTOR 2 SELECTED

NOTICE—  
THIS DRAWING IS PROPRIETARY AND SHALL NOT  
BE COPIED OR ITS CONTENTS DISCLOSED TO  
OUTSIDE PARTIES WITHOUT THE WRITTEN  
CONSENT OF THE TRANE COMPANY