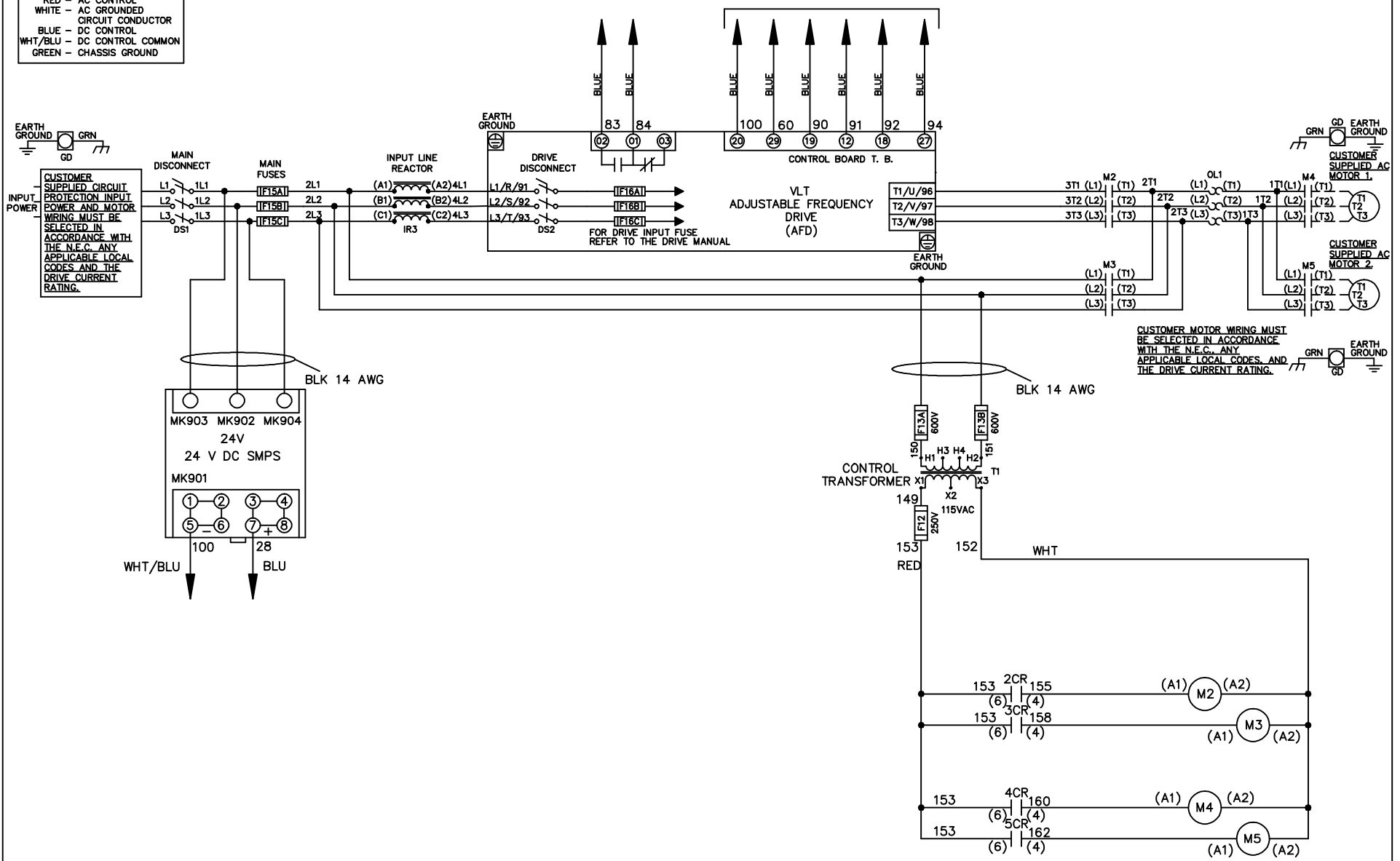


**WIRE COLOR SCHEME**  
 BLACK - LINE VOLTAGE  
 RED - AC CONTROL  
 WHITE - AC GROUNDED  
 CIRCUIT CONDUCTOR  
 BLUE - DC CONTROL  
 WHT/BLU - DC CONTROL COMMON  
 GREEN - CHASSIS GROUND

\* ALL CONTROL WIRES ARE BLUE EXCEPT WHERE NOTED. TO ELECTROMECHANICAL RELAY BOARD



-NOTICE-

THIS DRAWING IS PROPRIETARY AND SHALL NOT BE COPIED OR ITS CONTENTS DISCLOSED TO OUTSIDE PARTIES WITHOUT THE WRITTEN CONSENT OF THE TRANE COMPANY

DRN JNW  
2/8/07

NAME 208 VOLT, 2C, MAIN & DRIVE DISC  
 , MAIN FUSE, EMB2, FRAME C2N1\_  
 , REACTOR, CMS

THE TRANE COMPANY  
 A DIVISION OF  
 AMERICAN STANDARD INC.

|     |         |       |
|-----|---------|-------|
| A   | SP08061 | 10/08 |
| REV | ECN     | DATE  |

APR

MODEL

PAGE 1 OF 2

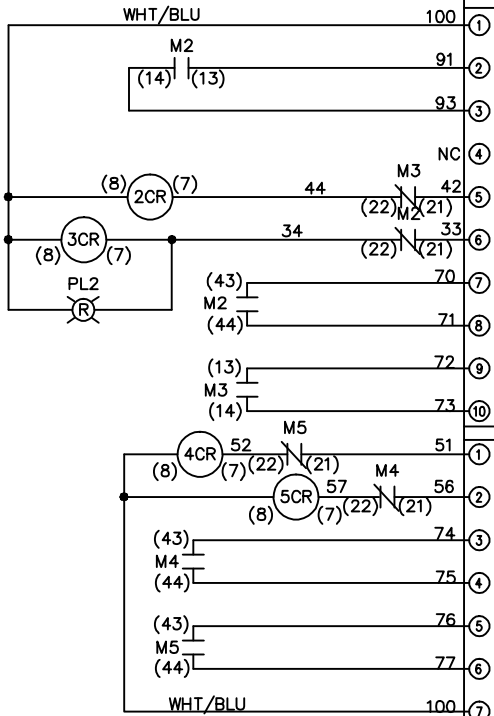
SIZE A

DWG NO.

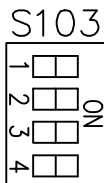
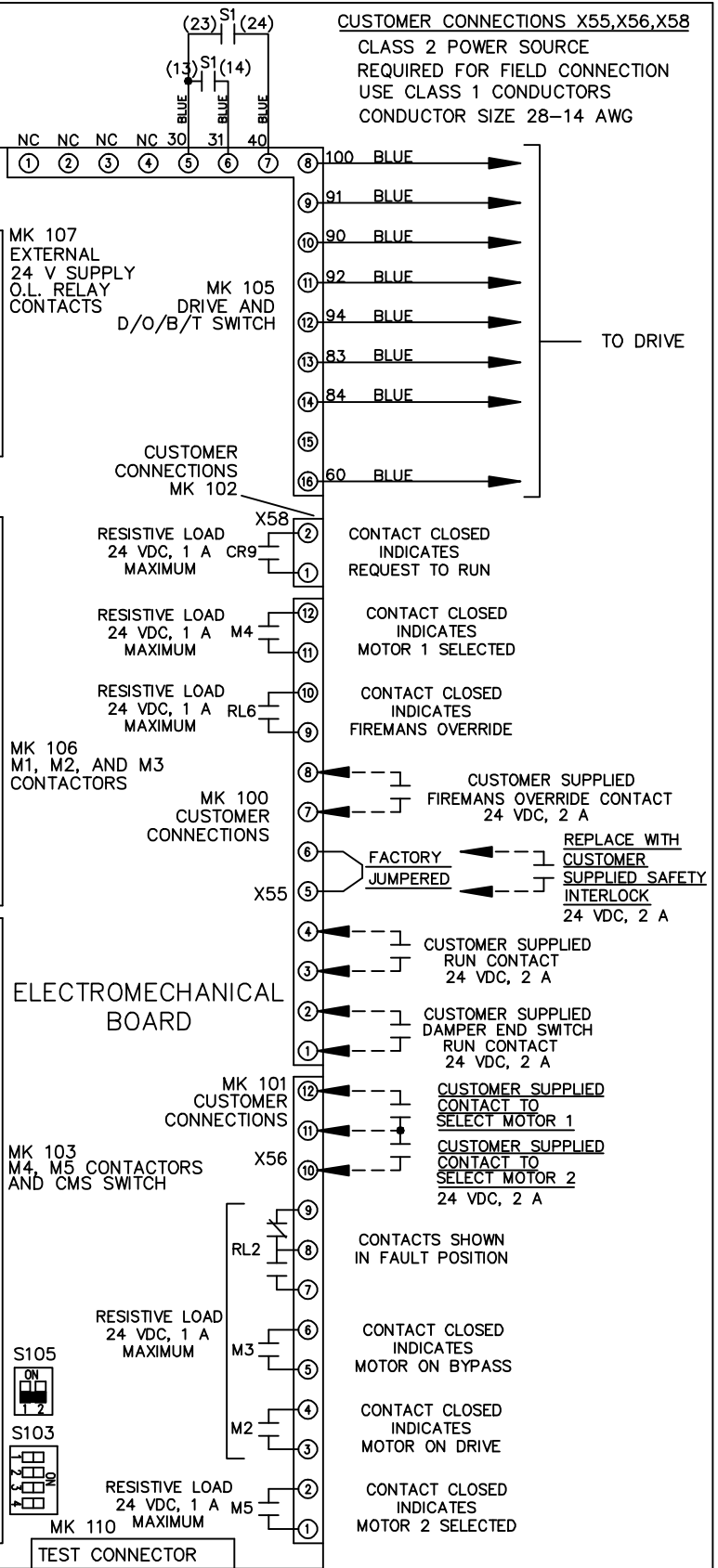
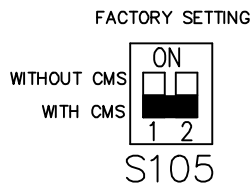
174U5509

|   |     |          |       |       |  |
|---|-----|----------|-------|-------|--|
| REV   | A   | SP08066  | 10/08 | DATE  |  |
| ECON  |     |          |       |       |  |
| -NOTICE-  |     |          |       |       |  |
| THIS DRAWING IS PROPRIETARY AND SHALL NOT BE COPIED OR ITS CONTENTS DISCLOSED TO OUTSIDE PARTIES WITHOUT THE WRITTEN CONSENT OF THE TRANE COMPANY |     |          |       |       |  |
| DRN   | JNW | 2/14/07  | APR   | MODEL | NAME 208 VOLT, 2C MAIN & DRIVE DISC, MAIN FUSE, EMB2, FRAME C2N1, REACTOR, CMS |
| PAGE  | 2   | OF       | 2     | SIZE  | A  |
| DWG   | NO. | 174U5509 |       |       |  |
| THE TRANE COMPANY<br>A DIVISION OF<br>AMERICAN STANDARD INC.  |     |          |       |       |  |

| CONTACT SEQUENCE CHART FOR S1 |         |       |
|-------------------------------|---------|-------|
| POSITION                      | CONTACT | DRIVE |
| 13-14                         | X       |       |
| 23-24                         | X       |       |



| CONTACT SEQUENCE CHART FOR S2 |         |         |
|-------------------------------|---------|---------|
| POSITION                      | CONTACT | MOTOR 1 |
| 11-12                         | X       |         |
| 13-14                         | X       |         |
| 21-22                         | X       |         |
| 23-24                         | X       |         |



**CUSTOMER SETTING**  
**AUTOMATIC BYPASS TIME SELECT**  
 ONLY # 1 ON 30 SECONDS  
 ONLY # 2 ON 60 SEC.  
 ONLY # 3 ON 300 SEC  
 ALL ON 15 SEC.  
 ALL OFF NO AUTO BYPASS (FACTORY DEFAULT)

**CUSTOMER CONNECTIONS X55, X56, X58**  
 CLASS 2 POWER SOURCE  
 REQUIRED FOR FIELD CONNECTION  
 USE CLASS 1 CONDUCTORS  
 CONDUCTOR SIZE 28-14 AWG

TO DRIVE