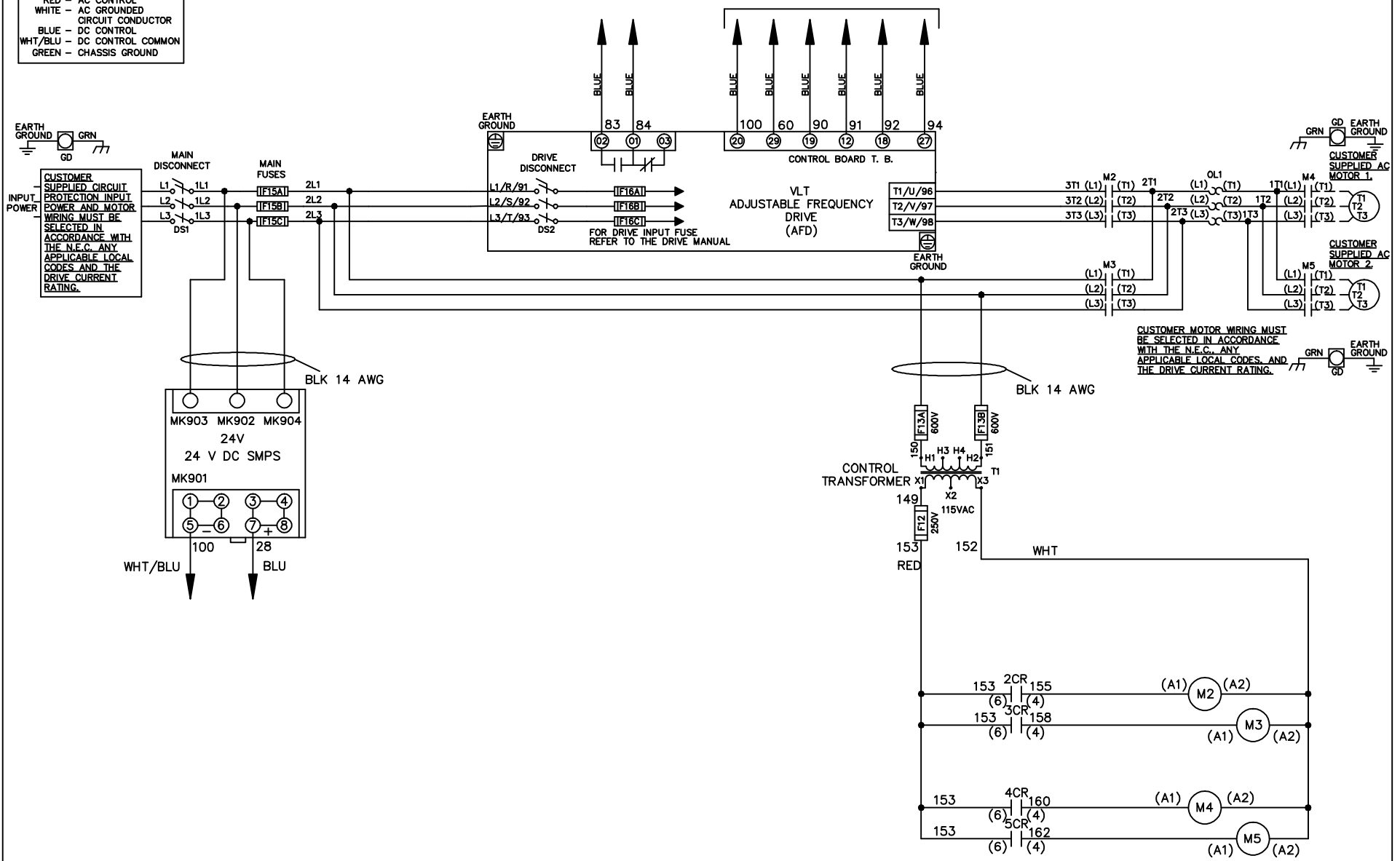


**WIRE COLOR SCHEME**  
 BLACK - LINE VOLTAGE  
 RED - AC CONTROL  
 WHITE - AC GROUND  
 BLUE - DC CONTROL  
 WHT/BLU - DC CONTROL COMMON  
 GREEN - CHASSIS GROUND

\* ALL CONTROL WIRES ARE BLUE EXCEPT WHERE NOTED. TO ELECTROMECHANICAL RELAY BOARD



			-NOTICE-		DRN JNW 2/8/07		NAME208 VOLT,2C,MAIN&DRIVE DISC ,MAIN FUSE,EMB2,FRAME C2N1_ ,NO REACTOR & DVDT,CMS		THE TRANE COMPANY A DIVISION OF AMERICAN STANDARD INC.	
A	SP08061	10/08	THIS DRAWING IS PROPRIETARY AND SHALL NOT BE COPIED OR ITS CONTENTS DISCLOSED TO OUTSIDE PARTIES WITHOUT THE WRITTEN CONSENT OF THE TRANE COMPANY			APR	MODEL	PAGE 1 OF 2	SIZE A	DWG NO. 174U5511
REV	ECN	DATE								

REV	A	SP08066	10/08	DATE
ECON				
-NOTICE-				
THIS DRAWING IS PROPRIETARY AND SHALL NOT BE COPIED OR ITS CONTENTS DISCLOSED TO OUTSIDE PARTIES WITHOUT THE WRITTEN CONSENT OF THE TRANE COMPANY				
DRN	JNW	2/14/07	APR	
MODEL	NAME 208 VOLT, 2C MAIN & DRIVE DISC, MAIN FUSE, EMB2 FRAME C2N1, NO REACTOR & DVDI, CMS			
PAGE	2	OF	2	SIZE
DWG NO.	174U5511			
THE TRANE COMPANY A DIVISION OF AMERICAN STANDARD INC.				

CONTACT SEQUENCE CHART FOR S1		
POSITION	DRIVE	OFF
CONTACT		
13-14		X
23-24	X	



CONTACT SEQUENCE CHART FOR S2		
POSITION	MOTOR 1	MOTOR 2
CONTACT		
11-12	X	X
13-14		X
21-22	X	
23-24	X	

