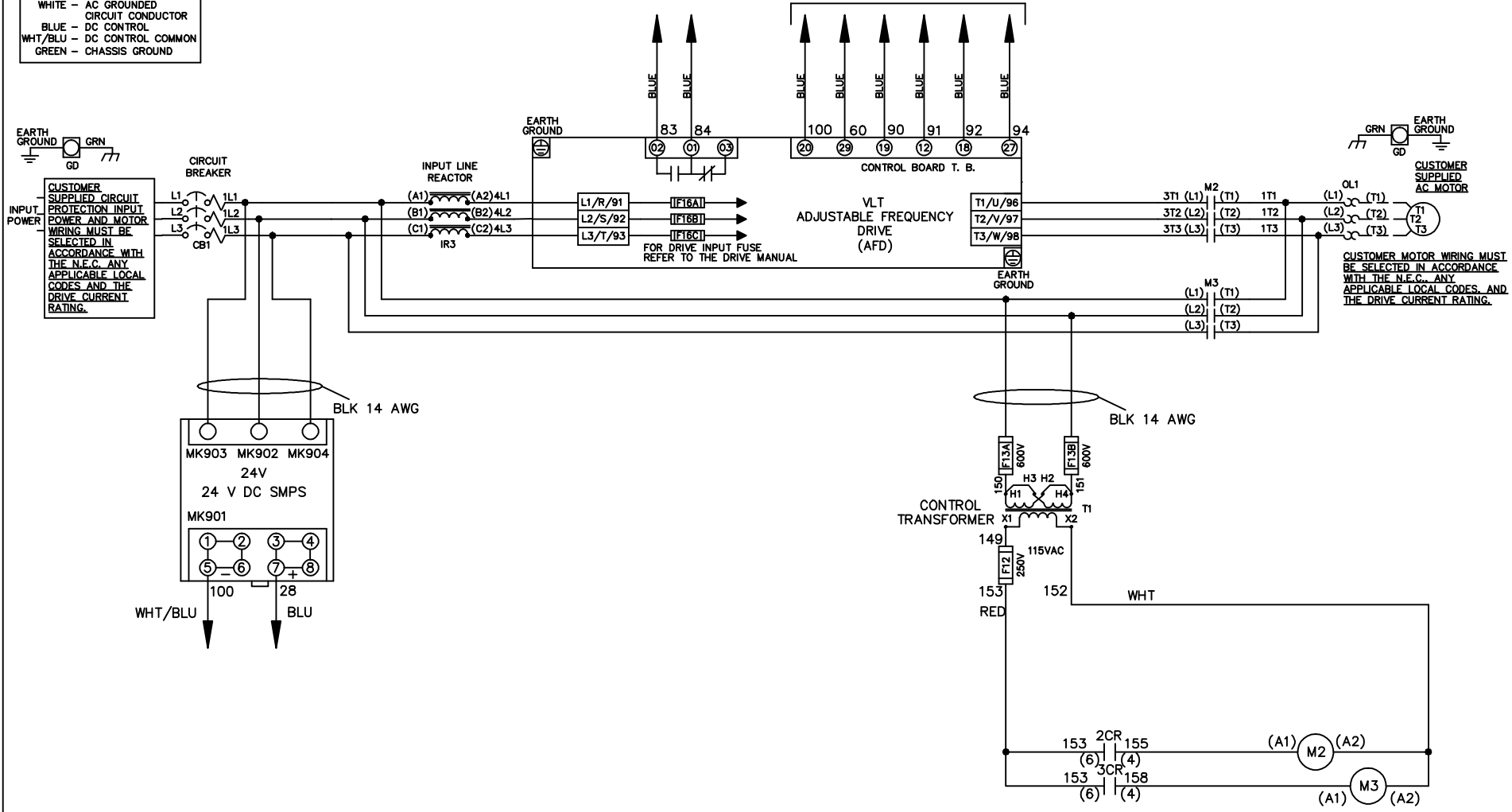


**WIRE COLOR SCHEME**  
 BLACK - LINE VOLTAGE  
 RED - AC CONTROL  
 WHITE - AC GROUNDED  
 CIRCUIT CONDUCTOR  
 BLUE - DC CONTROL  
 WHT/BLU - DC CONTROL COMMON  
 GREEN - CHASSIS GROUND

\* ALL CONTROL WIRES ARE BLUE EXCEPT WHERE NOTED. TO ELECTROMECHANICAL RELAY BOARD



-NOTICE-

THIS DRAWING IS PROPRIETARY AND SHALL NOT BE COPIED OR ITS CONTENTS DISCLOSED TO OUTSIDE PARTIES WITHOUT THE WRITTEN CONSENT OF THE TRANE COMPANY

DRN JNW  
2/8/07

NAME 230 VOLT, 2C, CB  
 , DRIVE FUSE, EMB2, FRAME C2N1\_  
 , REACTOR, SINGLE MTR

THE TRANE COMPANY  
 A DIVISION OF  
 AMERICAN STANDARD INC.

|     |         |       |
|-----|---------|-------|
| A   | SP08061 | 10/08 |
| REV | ECN     | DATE  |

APR

MODEL

PAGE 1 OF 2

SIZE A

DWG NO.

174U5761

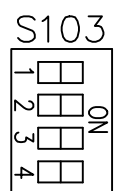
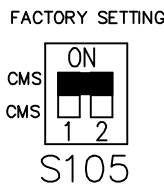
|   |         |       |             |         |                                |  |  |  |  |
|---|---------|-------|-------------|---------|--------------------------------|--|--|--|--|
| REV   | ECON    | DATE  |             |         |                                |  |  |  |  |
| A   | SP08066 | 10/08 |             |         |                                |  |  |  |  |
| - NOTICE -  |         |       |             |         |                                |  |  |  |  |
| THIS DRAWING IS PROPRIETARY AND SHALL NOT BE COPIED OR ITS CONTENTS DISCLOSED TO OUTSIDE PARTIES WITHOUT THE WRITTEN CONSENT OF THE TRANE COMPANY |         |       |             |         |                                |  |  |  |  |
|   |         |       | DRN JNW     | 2/14/07 | NAME 230 VOLT, 2C, CB          |  |  |  |  |
|   |         |       | APR         |         | , DRIVE FUSE, EMB2, FRAME C2N1 |  |  |  |  |
|   |         |       | MODEL       |         | , REACTOR, SINGLE MTR          |  |  |  |  |
|   |         |       | PAGE 2 OF 2 | SIZE A  | DWG NO. 174U5761               |  |  |  |  |
| THE TRANE COMPANY<br>A DIVISION OF<br>AMERICAN STANDARD INC.  |         |       |             |         |                                |  |  |  |  |

CONTACT SEQUENCE CHART FOR S1  
X INDICATES CONTACT CLOSED

| POSITION | DRIVE | OFF | BYPASS |
|----------|-------|-----|--------|
| 13-14    |       |     | X      |
| 23-24    | X     |     |        |



CUSTOMER CONNECTIONS X55, X56, X58  
CLASS 2 POWER SOURCE  
REQUIRED FOR FIELD CONNECTION  
USE CLASS 1 CONDUCTORS  
CONDUCTOR SIZE 28-14 AWG



- ONLY # 1 ON 30 SECONDS
- ONLY # 2 ON 60 SEC.
- ONLY # 3 ON 300 SEC
- ALL ON 15 SEC.
- ALL OFF NO AUTO BYPASS (FACTORY DEFAULT)