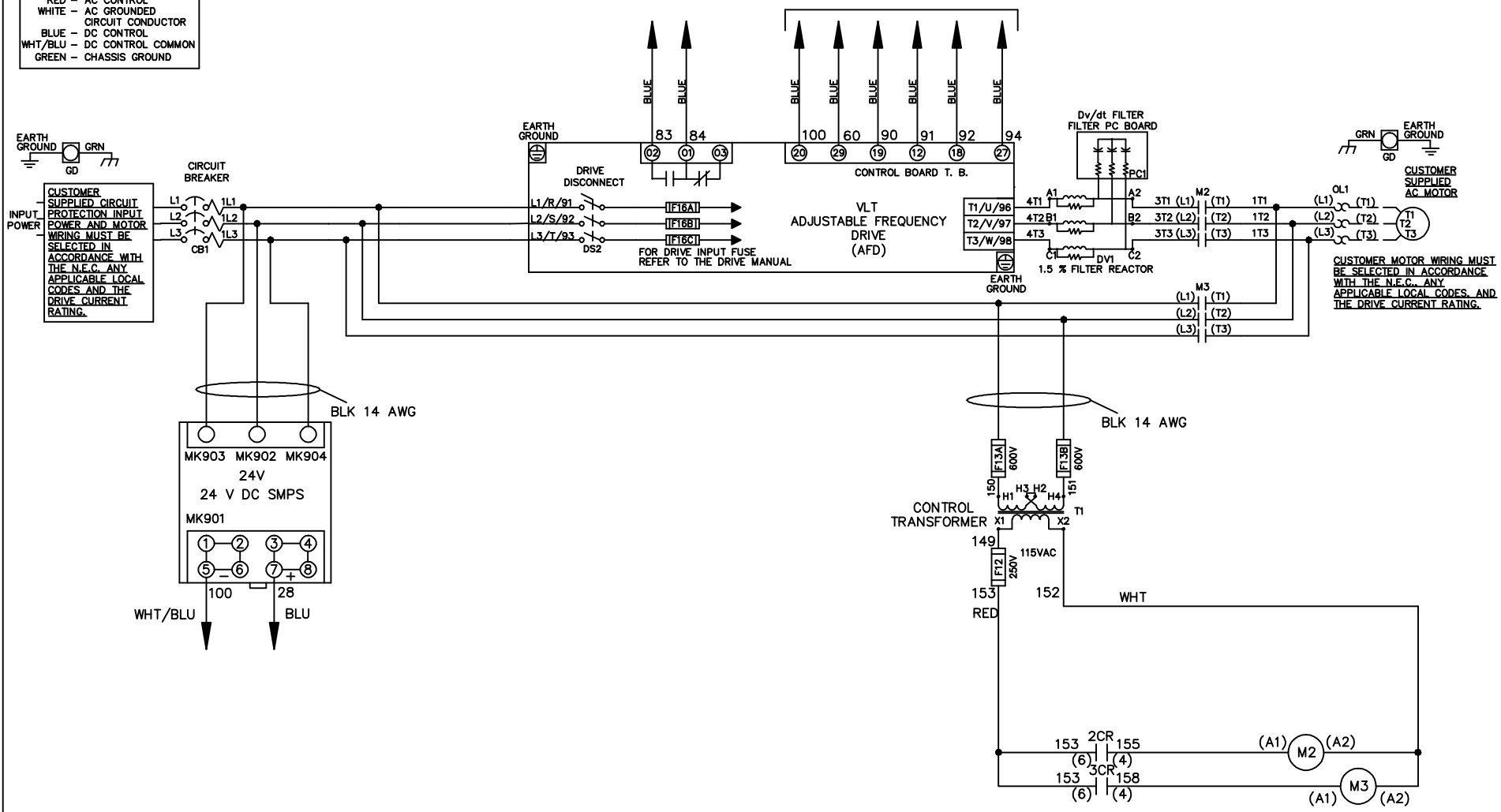


**WIRE COLOR SCHEME**  
 BLACK - LINE VOLTAGE  
 RED - AC CONTROL  
 WHITE - AC GROUND  
 BLUE - DC CONTROL  
 WHT/BLU - DC CONTROL COMMON  
 GREEN - CHASSIS GROUND

\* ALL CONTROL WIRES ARE BLUE EXCEPT WHERE NOTED. TO ELECTROMECHANICAL RELAY BOARD



-NOTICE-

THIS DRAWING IS PROPRIETARY AND SHALL NOT BE COPIED OR ITS CONTENTS DISCLOSED TO OUTSIDE PARTIES WITHOUT THE WRITTEN CONSENT OF THE TRANE COMPANY

DRN JNW  
2/8/07

NAME 460 VOLT, 2C, CB & DRIVE DISC  
 , DRIVE FUSE, EMB2, FRAME C2N1\_  
 , DVDT, SINGLE MTR

THE TRANE COMPANY  
 A DIVISION OF  
 AMERICAN STANDARD INC.

|     |         |       |
|-----|---------|-------|
| A   | SP08061 | 10/08 |
| REV | ECN     | DATE  |

APR

MODEL

PAGE 1 OF 2

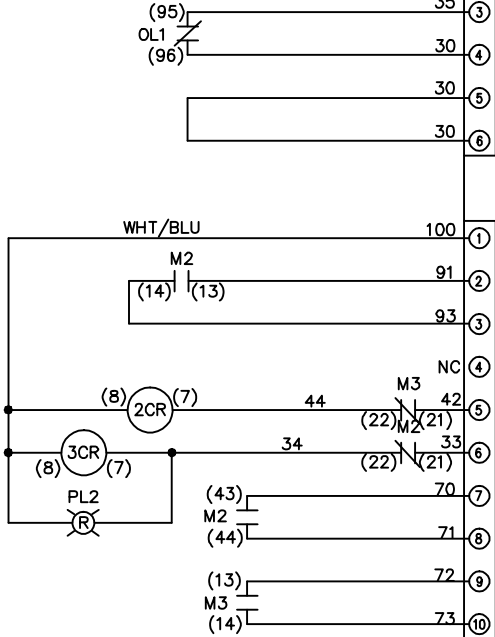
SIZE A

DWG NO.

174U6008

|   |  |         |   |      |   |     |     |          |  |
|---|--|---------|---|------|---|-----|-----|----------|--|
| REV   | ECON   | DATE    |   |      |   |     |     |          |  |
| A   | SP08066  | 10/08   |   |      |   |     |     |          |  |
| -NOTICE-  |  |         |   |      |   |     |     |          |  |
| THIS DRAWING IS PROPRIETARY AND SHALL NOT BE COPIED OR ITS CONTENTS DISCLOSED TO OUTSIDE PARTIES WITHOUT THE WRITTEN CONSENT OF THE TRANE COMPANY |  |         |   |      |   |     |     |          |  |
| DRN   | JNW  | 2/14/07 |   |      |   |     |     |          |  |
| MODEL   | NAME 460 VOLT, 2C, CB & DRIVE DISC, DRIVE FUSE, EMB2, FRAME C2N1, DVDI, SINGLE MTR |         |   |      |   |     |     |          |  |
| PAGE  | 2  | OF      | 2 | SIZE | A | DWG | NO. | 174U6008 |  |
| THE TRANE COMPANY<br>A DIVISION OF<br>AMERICAN STANDARD INC.  |  |         |   |      |   |     |     |          |  |

| CONTACT SEQUENCE CHART FOR S1<br>X INDICATES CONTACT CLOSED |       |     |
|---|-------|-----|
| POSITION  | DRIVE | OFF |
| 13-14   |       | X   |
| 23-24   | X     |     |



CUSTOMER CONNECTIONS X55, X56, X58  
 CLASS 2 POWER SOURCE  
 REQUIRED FOR FIELD CONNECTION  
 USE CLASS 1 CONDUCTORS  
 CONDUCTOR SIZE 28-14 AWG



CUSTOMER SETTING  
 AUTOMATIC BYPASS TIME SELECT  
 ONLY # 1 ON 30 SECONDS  
 ONLY # 2 ON 60 SEC.  
 ONLY # 3 ON 300 SEC  
 ALL ON 15 SEC.  
 ALL OFF NO AUTO BYPASS (FACTORY DEFAULT)