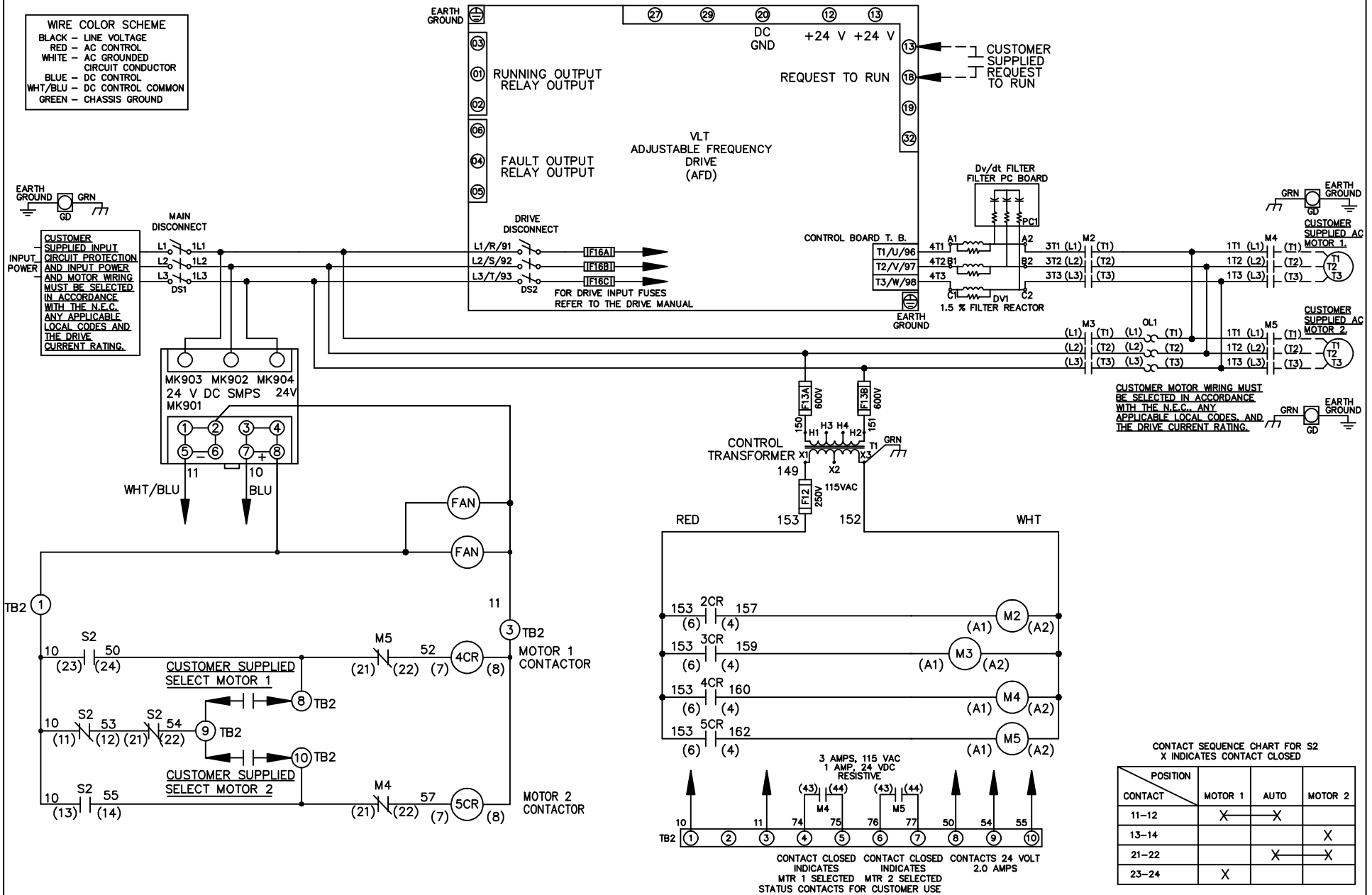


**WIRE COLOR SCHEME**  
 BLACK - LINE VOLTAGE  
 RED - AC CONTROL  
 WHITE - AC GROUNDED  
 CIRCUIT CONDUCTOR  
 BLUE - DC CONTROL  
 WHT/BLU - DC CONTROL COMMON  
 GREEN - CHASSIS GROUND



**CUSTOMER MOTOR WIRING MUST BE SELECTED IN ACCORDANCE WITH THE N.E.C. ANY APPLICABLE LOCAL CODES, AND THE DRIVE CURRENT RATING.**

**CONTACT SEQUENCE CHART FOR S2**  
 X INDICATES CONTACT CLOSED

CONTACT	MOTOR 1	AUTO	MOTOR 2
11-12	X	X	
13-14			X
21-22		X	X
23-24	X		

REV	ECN	DATE
A	SP08061	10/08

**-NOTICE-**

THIS DRAWING IS PROPRIETARY AND SHALL NOT BE COPIED OR ITS CONTENTS DISCLOSED TO OUTSIDE PARTIES WITHOUT THE WRITTEN CONSENT OF THE TRANE COMPANY

DRN JNW  
2/14/07  
APR

NAME 208 VOLT, 2C, MAIN & DRIVE DISC  
 , DRIVE FUSE, ECB, FRAME C2N12  
 , DVDT, CMS

MODEL

**THE TRANE COMPANY**  
 A DIVISION OF  
 AMERICAN STANDARD INC.

PAGE 1 OF 2  
 SIZE A  
 DWG NO. 174U6365

REV	ECN	DATE
A	SP08066	10/08

-NOTICE-  
THIS DRAWING IS PROPRIETARY AND SHALL NOT BE COPIED OR ITS CONTENTS DISCLOSED TO OUTSIDE PARTIES WITHOUT THE WRITTEN CONSENT OF THE TRANE COMPANY

DRN JUNW  
2/14/07  
APR

MODEL NAME 208 VOLT, 2C, MAIN&DRIVE DISC, DRIVE FUSE, ECB, FRAME C2N12, DVD1, CMS

PAGE 2 OF 2 SIZE A DWG NO. 174U6365

THE TRANE COMPANY  
A DIVISION OF  
AMERICAN STANDARD INC.

CUSTOMER CONNECTIONS X56, X57, X59  
CLASS 2 POWER SOURCE  
REQUIRED FOR FIELD CONNECTION  
USE CLASS 1 CONDUCTORS  
CONDUCTOR SIZE 28-14 AWG



ECB BOARD TB1

① EXTERNAL 24 V SUPPLY X58  
②

CUSTOMER MOTOR RUNNING CONTACT X56  
① 0-24 VDC MAXIMUM 1 AMPS DC RESISTIVE  
②  
NC ③

NC ④ + 24 V  
⑤

NC ⑥  
NC ⑦ + 24 V  
⑧

NC ⑨  
NC ⑩ + 24 V  
⑪

NC ⑫  
18

① SAFETY INTERLOCK X57  
② COM

③ CMS MOTOR SELECTED  
④

⑤ O.L. TRIP  
⑥ M2 STATUS

⑦ M3 STATUS  
⑧ BYPASS MODE ENABLE

⑨ BYPASS OVERRIDE  
⑩ O.L. RESET

① COM X59  
② COM

NC ③  
NC ④

⑤ DRIVE MODE  
⑥ BYPASS MODE

⑦ COM  
⑧ COM

TEST CONNECTOR MK 110