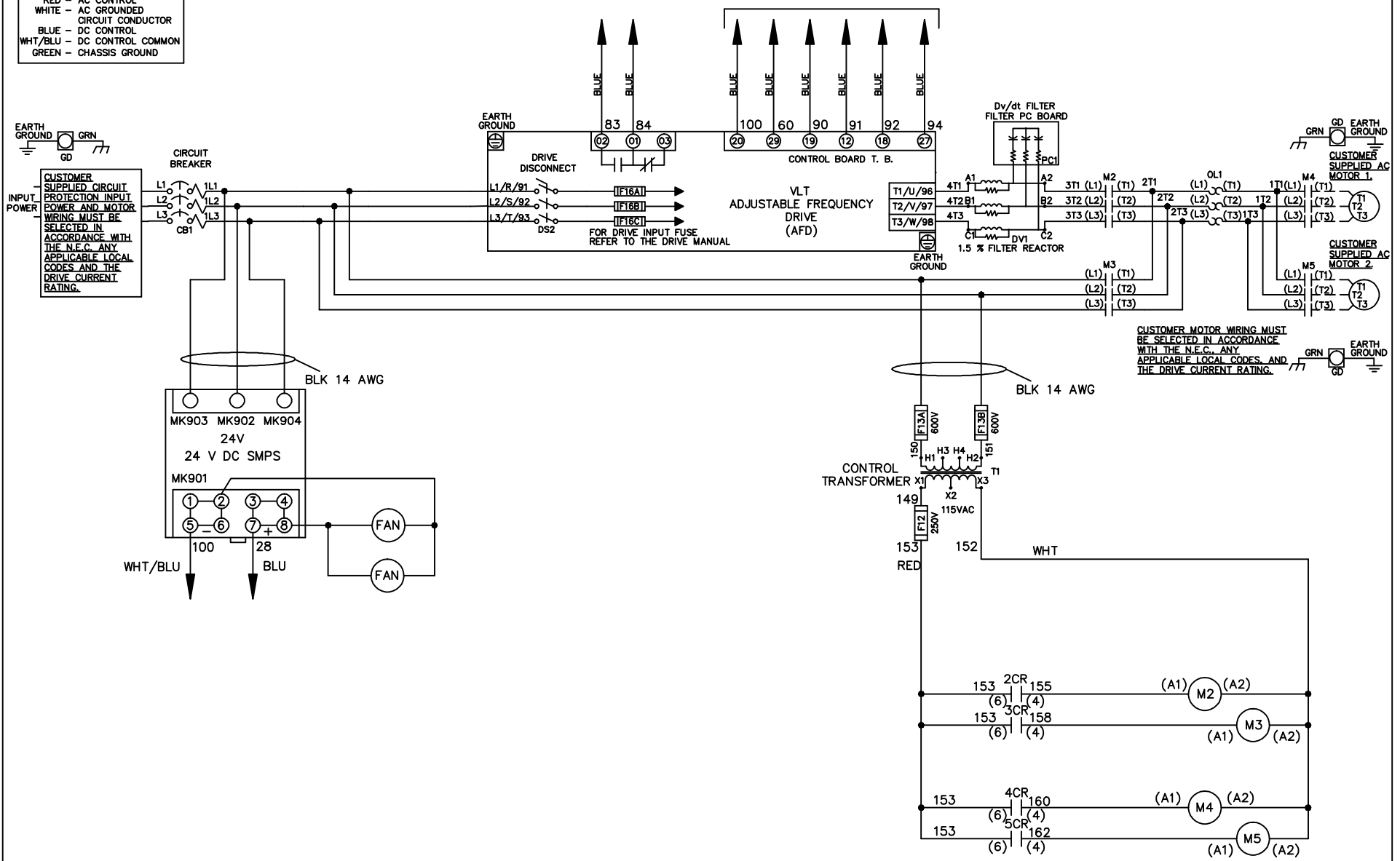


WIRE COLOR SCHEME
 BLACK - LINE VOLTAGE
 RED - AC CONTROL
 WHITE - AC GROUND
 BLUE - DC CONTROL
 WHT/BLU - DC CONTROL COMMON
 GREEN - CHASSIS GROUND

* ALL CONTROL WIRES ARE BLUE EXCEPT WHERE NOTED. TO ELECTROMECHANICAL RELAY BOARD



CUSTOMER MOTOR WIRING MUST BE SELECTED IN ACCORDANCE WITH THE N.E.C. ANY APPLICABLE LOCAL CODES, AND THE DRIVE CURRENT RATING.

-NOTICE-

THIS DRAWING IS PROPRIETARY AND SHALL NOT BE COPIED OR ITS CONTENTS DISCLOSED TO OUTSIDE PARTIES WITHOUT THE WRITTEN CONSENT OF THE TRANE COMPANY

DRN JNW
2/8/07

NAME208 VOLT,2C,CB & DRIVE DISC
,DRIVE FUSE,EMB2,FRAME C2N12
,DVDT,CMS

THE TRANE COMPANY
A DIVISION OF
AMERICAN STANDARD INC.

A	SP08061	10/08
REV	ECN	DATE

APR

MODEL

PAGE 1 OF 2

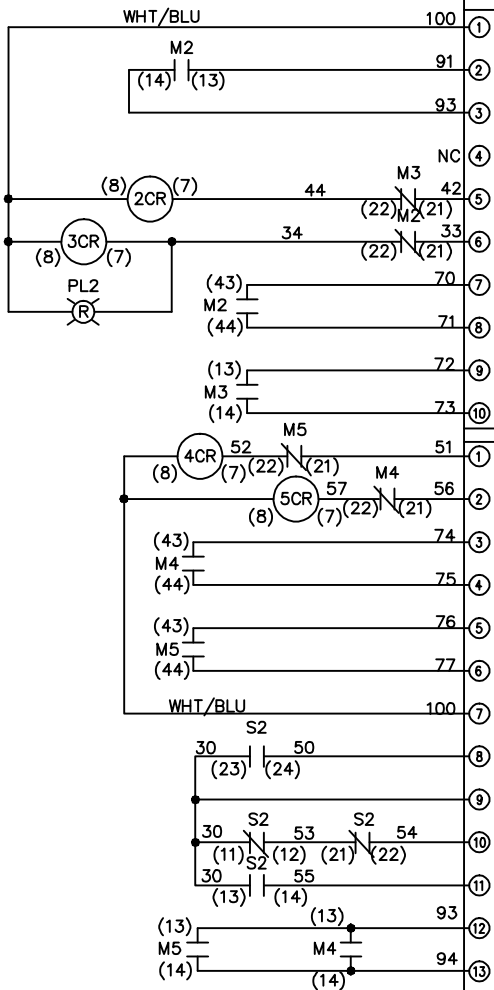
SIZE A

DWG NO.

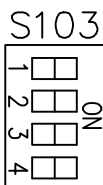
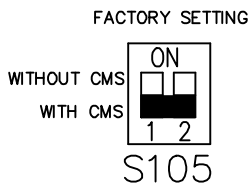
174U6431

REV	A	SP08066	10/08	DATE
CON				
DATE				
-NOTICE-				
THIS DRAWING IS PROPRIETARY AND SHALL NOT BE COPIED OR ITS CONTENTS DISCLOSED TO OUTSIDE PARTIES WITHOUT THE WRITTEN CONSENT OF THE TRANE COMPANY				
DRN	JNW	2/14/07	APR	
MODEL	NAME 208 VOLT, 2C, CB & DRIVE DISC, DRIVE FUSE, EMB2, FRAME C2N12, DVDT, CMS			
PAGE	2	OF	2	SIZE
DWG	NO.	174U6431		
THE TRANE COMPANY A DIVISION OF AMERICAN STANDARD INC.				

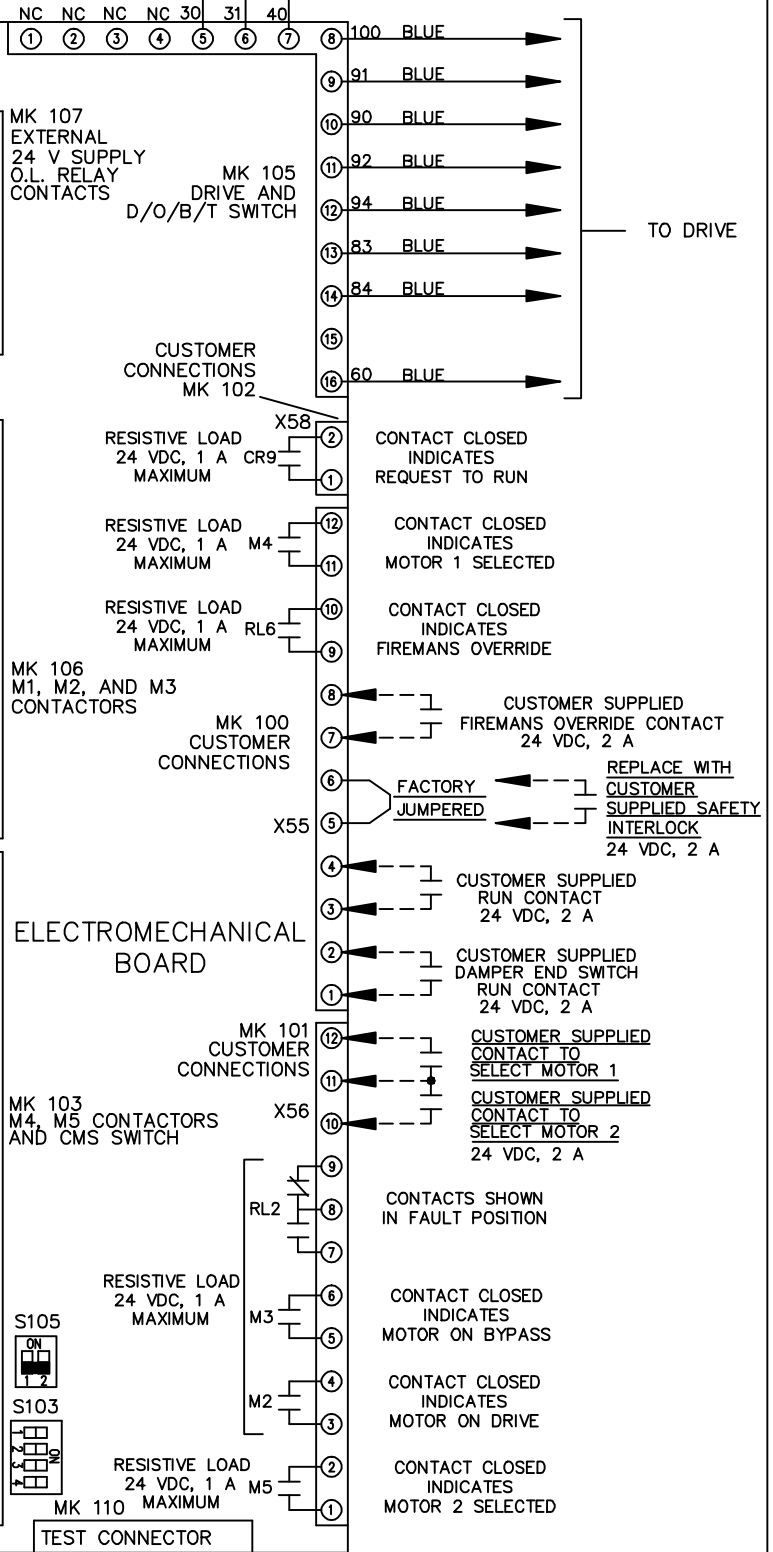
CONTACT SEQUENCE CHART FOR S1		
CONTACT	POSITION	
13-14	DRIVE	X
23-24	OFF	
	BYPASS	X



CONTACT SEQUENCE CHART FOR S2		
CONTACT	POSITION	
11-12	MOTOR 1	X
13-14	AUTO	X
21-22	MOTOR 2	X
23-24		X



CUSTOMER CONNECTIONS X55, X56, X58
 CLASS 2 POWER SOURCE
 REQUIRED FOR FIELD CONNECTION
 USE CLASS 1 CONDUCTORS
 CONDUCTOR SIZE 28-14 AWG



ELECTROMECHANICAL BOARD