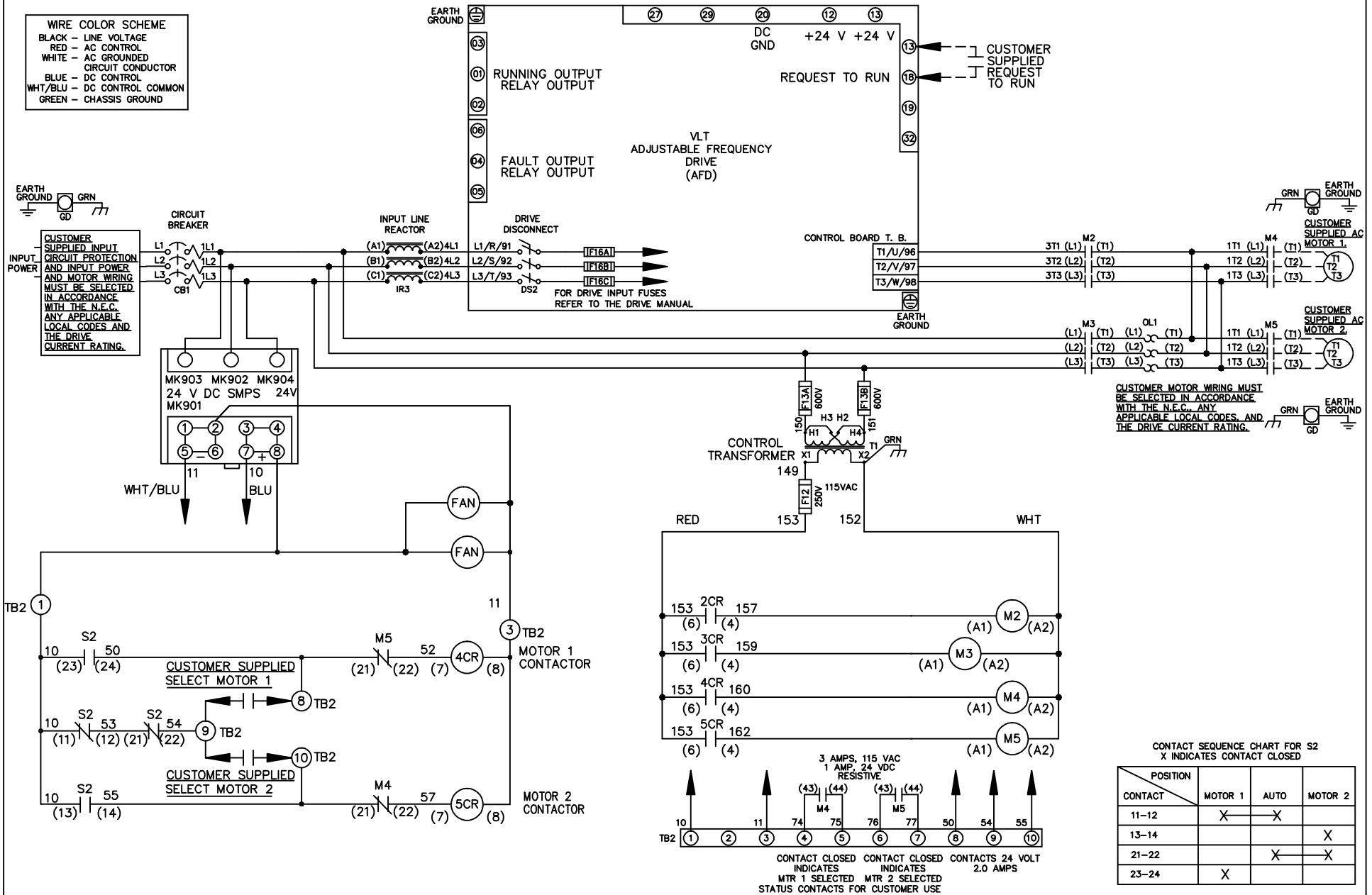


WIRE COLOR SCHEME	
BLACK	- LINE VOLTAGE
RED	- AC CONTROL
WHITE	- AC GROUNDED CIRCUIT CONDUCTOR
BLUE	- DC CONTROL
WHT/BLU	- DC CONTROL COMMON
GREEN	- CHASSIS GROUND



REV	ECN	DATE
A	SP08061	10/08

-NOTICE-

THIS DRAWING IS PROPRIETARY AND SHALL NOT BE COPIED OR ITS CONTENTS DISCLOSED TO OUTSIDE PARTIES WITHOUT THE WRITTEN CONSENT OF THE TRANE COMPANY

DRN JNW
2/14/07

APR

NAME 230 VOLT, 2C, CB & DRIVE DISC
, DRIVE FUSE, ECB, FRAME C2N12
, REACTOR, CMS

MODEL

PAGE 1 OF 2

SIZE A

DWG NO. 174U6586

THE TRANE COMPANY
A DIVISION OF
AMERICAN STANDARD INC.

REV	ECN	DATE
A	SP08066	10/08

-NOTICE-
THIS DRAWING IS PROPRIETARY AND SHALL NOT BE COPIED OR ITS CONTENTS DISCLOSED TO OUTSIDE PARTIES WITHOUT THE WRITTEN CONSENT OF THE TRANE COMPANY

DRN JUNW
2/14/07
APR

MODEL NAME 230 VOLT, 2C, CB & DRIVE DISC, DRIVE FUSE, ECB, FRAME C2N12, REACTOR, CMS

PAGE 2 OF 2 SIZE A DWG NO. 174U6586

THE TRANE COMPANY
A DIVISION OF
AMERICAN STANDARD INC.

CUSTOMER CONNECTIONS X56, X57, X59
CLASS 2 POWER SOURCE
REQUIRED FOR FIELD CONNECTION
USE CLASS 1 CONDUCTORS
CONDUCTOR SIZE 28-14 AWG



ECB BOARD TB1

① EXTERNAL 24 V SUPPLY X58
②

CUSTOMER MOTOR RUNNING CONTACT X56
① 0-24 VDC MAXIMUM 1 AMPS DC RESISTIVE
②
NC ③

NC ④ + 24 V
⑤

NC ⑥
NC ⑦ + 24 V
⑧

NC ⑨
NC ⑩ + 24 V
NC ⑪

NC ⑫
18

① SAFETY INTERLOCK X57
② COM

③ CMS MOTOR SELECTED
④

⑤ O.L. TRIP
⑥ M2 STATUS
⑦ M3 STATUS

⑧ BYPASS MODE ENABLE
⑨ BYPASS OVERRIDE
⑩ O.L. RESET

① COM X59
② COM

NC ③
NC ④

⑤ DRIVE MODE
⑥ BYPASS MODE
⑦ COM

⑧ COM
23

TEST CONNECTOR MK 110