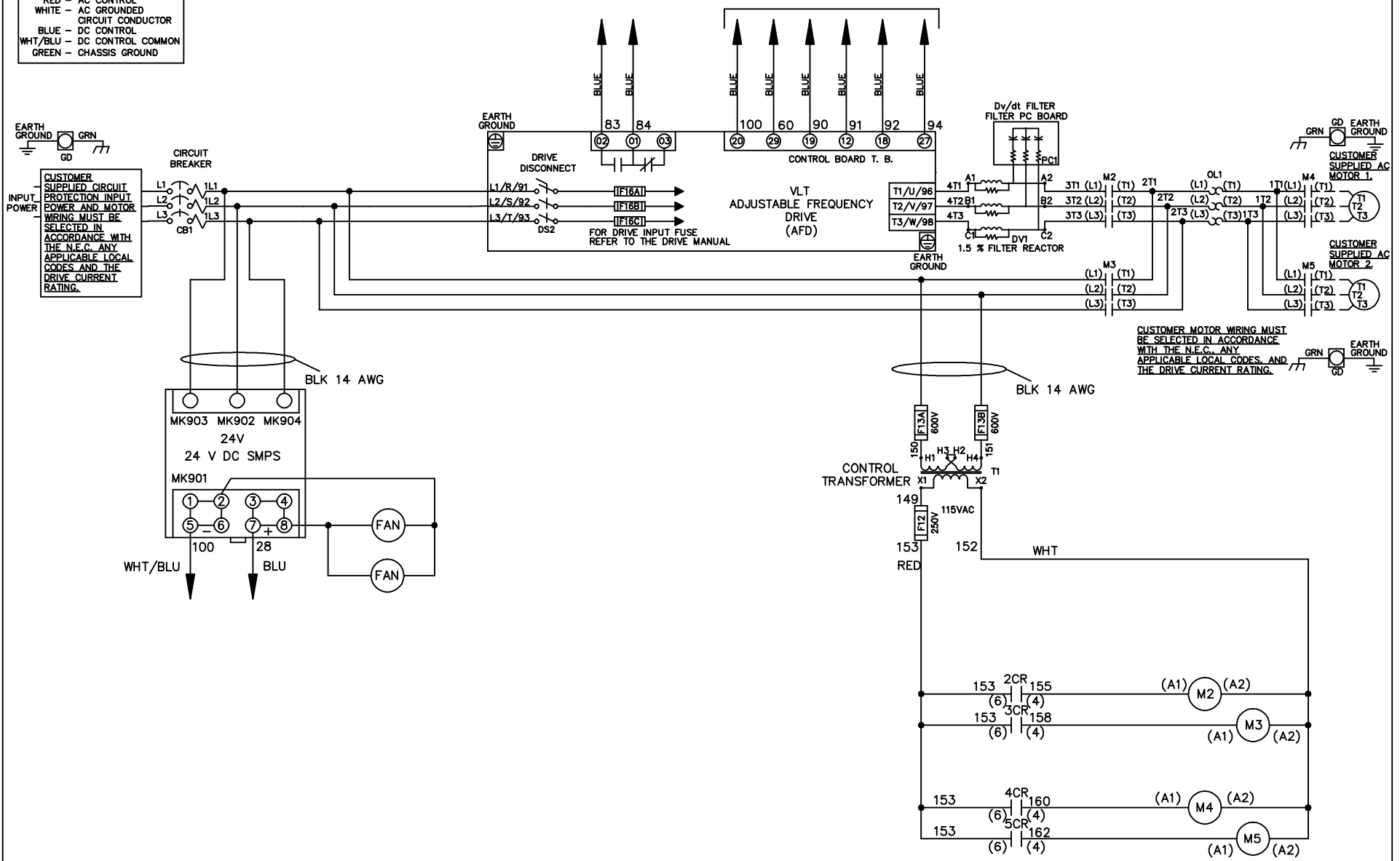


- WIRE COLOR SCHEME**
- BLACK - LINE VOLTAGE
  - RED - AC CONTROL
  - WHITE - AC GROUND
  - WHITE - CIRCUIT CONDUCTOR
  - BLUE - DC CONTROL
  - WHT/BLU - DC CONTROL COMMON
  - GREEN - CHASSIS GROUND

\* ALL CONTROL WIRES ARE BLUE EXCEPT WHERE NOTED. TO ELECTROMECHANICAL RELAY BOARD



CUSTOMER MOTOR WIRING MUST BE SELECTED IN ACCORDANCE WITH THE N.E.C. ANY APPLICABLE LOCAL CODES, AND THE DRIVE CURRENT RATING.

-NOTICE-

THIS DRAWING IS PROPRIETARY AND SHALL NOT BE COPIED OR ITS CONTENTS DISCLOSED TO OUTSIDE PARTIES WITHOUT THE WRITTEN CONSENT OF THE TRANE COMPANY

DRN JNW  
2/8/07

NAME460 VOLT,2C,CB & DRIVE DISC  
,DRIVE FUSE,EMB2,FRAME C2N12  
,DVDT,CMS

THE TRANE COMPANY  
A DIVISION OF  
AMERICAN STANDARD INC.

A	SP08061	10/08
REV	ECN	DATE

APR

MODEL

PAGE 1 OF 2

SIZE A

DWG NO.

174U6899

REV	A	ECON	DATE	DRN JNW	APR	MODEL	SIZE	DWG NO.
	SP08066		10/08	2/14/07			A	174U6899
THIS DRAWING IS PROPRIETARY AND SHALL NOT BE COPIED OR ITS CONTENTS DISCLOSED TO OUTSIDE PARTIES WITHOUT THE WRITTEN CONSENT OF THE TRANE COMPANY				NAME 460 VOLT, 2C, CB & DRIVE DISC, DRIVE FUSE, EMB2, FRAME C2N12, DVDT, CMS			THE TRANE COMPANY A DIVISION OF AMERICAN STANDARD INC.	

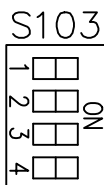
CONTACT SEQUENCE CHART FOR S1  
X INDICATES CONTACT CLOSED

CONTACT	POSITION	DRIVE	OFF	BYPASS
13-14				X
23-24		X		

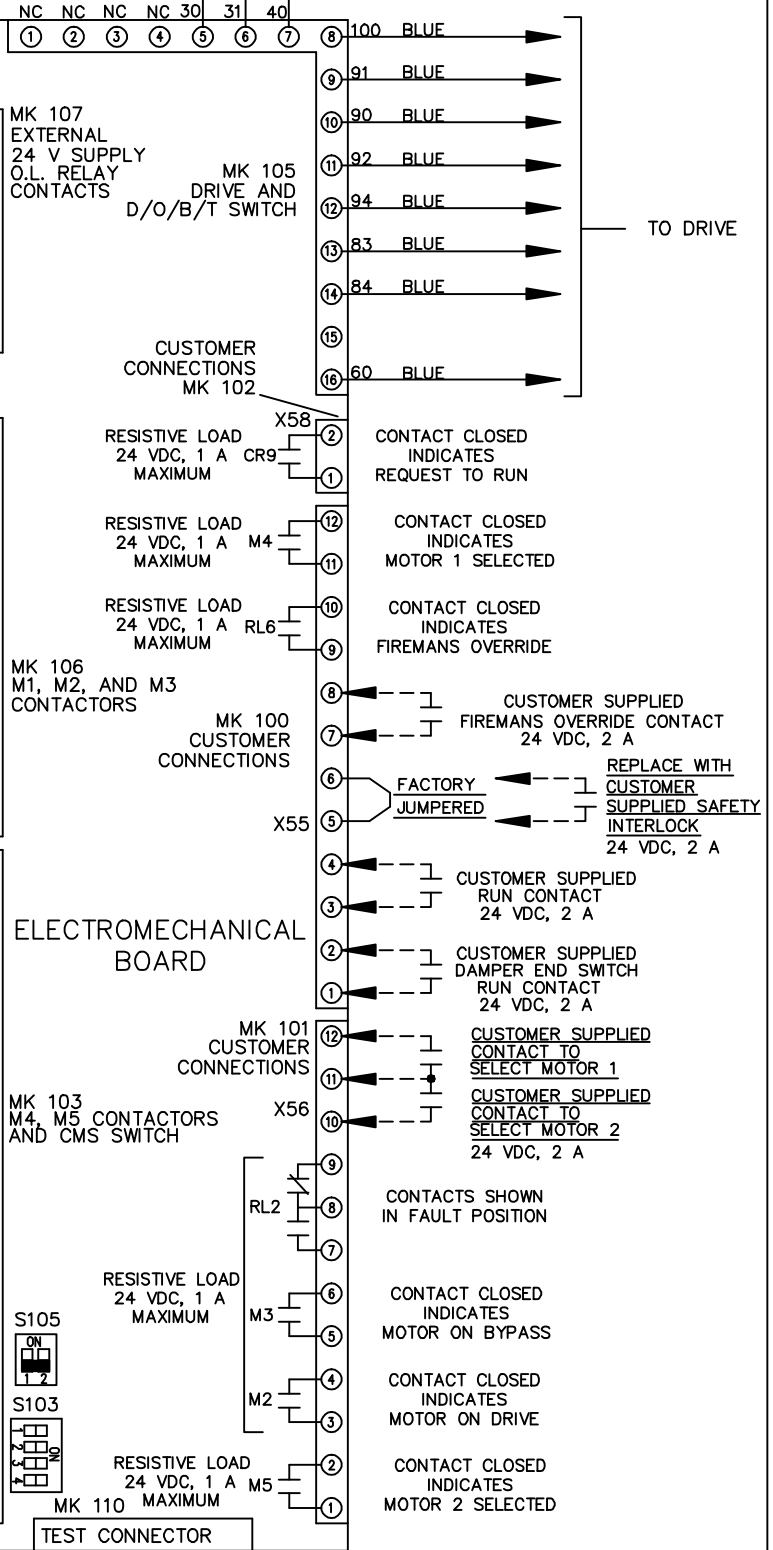


CONTACT SEQUENCE CHART FOR S2  
X INDICATES CONTACT CLOSED

CONTACT	POSITION	MOTOR 1	AUTO	MOTOR 2
11-12		X	X	
13-14				X
21-22			X	
23-24		X		



CUSTOMER CONNECTIONS X55, X56, X58  
CLASS 2 POWER SOURCE  
REQUIRED FOR FIELD CONNECTION  
USE CLASS 1 CONDUCTORS  
CONDUCTOR SIZE 28-14 AWG



ELECTROMECHANICAL BOARD

MK 103  
M4, M5 CONTACTORS  
AND CMS SWITCH

TEST CONNECTOR

CONTACTS SHOWN  
IN FAULT POSITION

CONTACT CLOSED  
INDICATES  
MOTOR ON BYPASS

CONTACT CLOSED  
INDICATES  
MOTOR ON DRIVE

CONTACT CLOSED  
INDICATES  
MOTOR 2 SELECTED

CUSTOMER SUPPLIED  
FIREMANS OVERRIDE CONTACT  
24 VDC, 2 A

REPLACE WITH  
CUSTOMER  
SUPPLIED SAFETY  
INTERLOCK  
24 VDC, 2 A

CUSTOMER SUPPLIED  
RUN CONTACT  
24 VDC, 2 A

CUSTOMER SUPPLIED  
DAMPER END SWITCH  
RUN CONTACT  
24 VDC, 2 A

CUSTOMER SUPPLIED  
CONTACT TO  
SELECT MOTOR 1

CUSTOMER SUPPLIED  
CONTACT TO  
SELECT MOTOR 2  
24 VDC, 2 A

RESISTIVE LOAD  
24 VDC, 1 A  
MAXIMUM

M3

RESISTIVE LOAD  
24 VDC, 1 A  
MAXIMUM

M5

RESISTIVE LOAD  
24 VDC, 1 A  
MAXIMUM

M4

RESISTIVE LOAD  
24 VDC, 1 A  
MAXIMUM

CR9

RESISTIVE LOAD  
24 VDC, 1 A  
MAXIMUM

M4

RESISTIVE LOAD  
24 VDC, 1 A  
MAXIMUM

RL6

100 BLUE  
91 BLUE  
90 BLUE  
92 BLUE  
94 BLUE  
83 BLUE  
84 BLUE  
60 BLUE

TO DRIVE

1 2 3 4 5 6 7 8 9 10 11 12 13 14 15 16

100 91 93 92 94 83 84 60

1 2 3 4 5 6 7 8 9 10 11 12 13 14 15 16