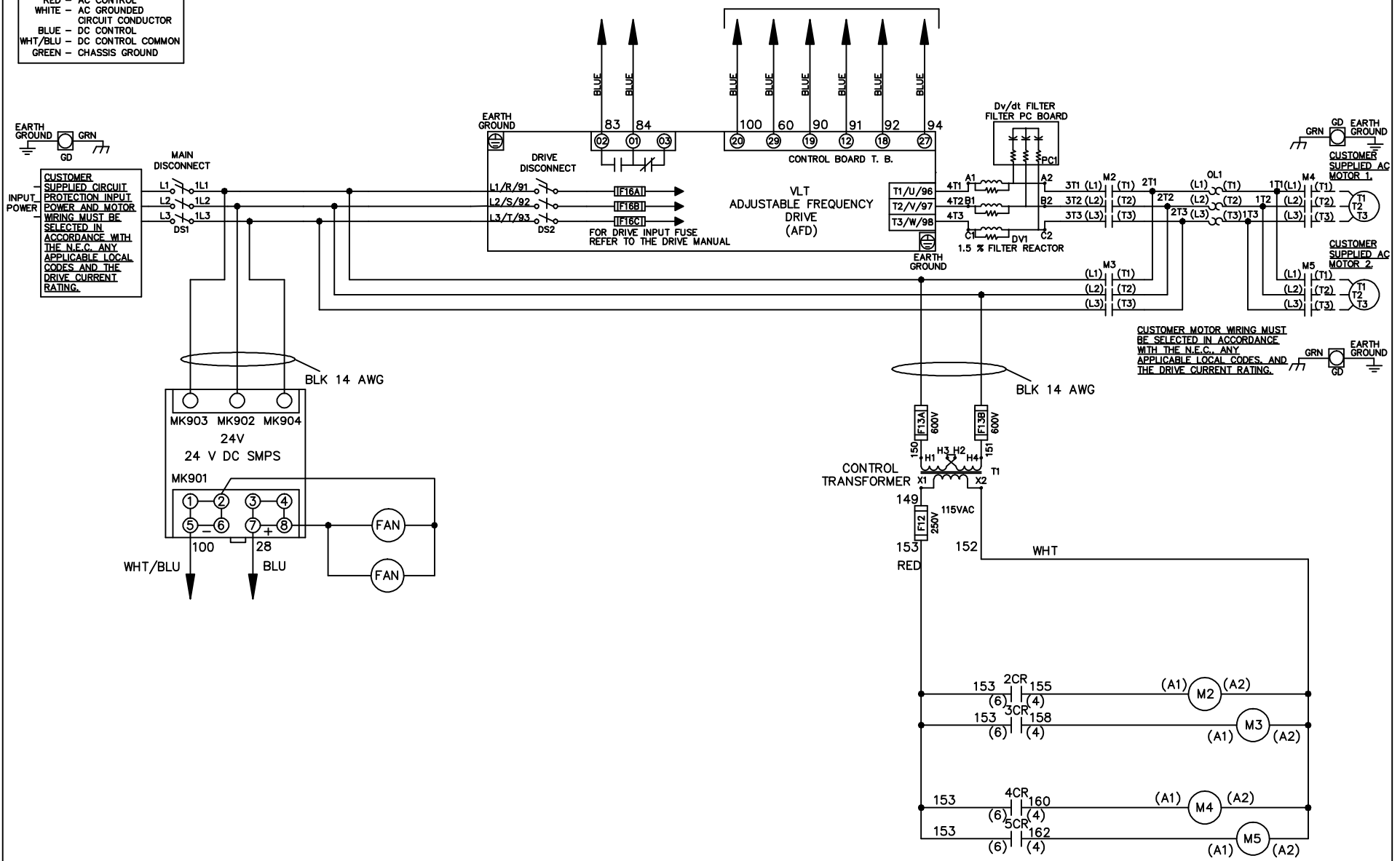


WIRE COLOR SCHEME
 BLACK - LINE VOLTAGE
 RED - AC CONTROL
 WHITE - AC GROUND
 WHITE - CIRCUIT CONDUCTOR
 BLUE - DC CONTROL
 WHT/BLU - DC CONTROL COMMON
 GREEN - CHASSIS GROUND

* ALL CONTROL WIRES ARE BLUE EXCEPT WHERE NOTED. TO ELECTROMECHANICAL RELAY BOARD



CUSTOMER MOTOR WIRING MUST BE SELECTED IN ACCORDANCE WITH THE N.E.C. ANY APPLICABLE LOCAL CODES, AND THE DRIVE CURRENT RATING.

-NOTICE-

THIS DRAWING IS PROPRIETARY AND SHALL NOT BE COPIED OR ITS CONTENTS DISCLOSED TO OUTSIDE PARTIES WITHOUT THE WRITTEN CONSENT OF THE TRANE COMPANY

DRN JNW
2/8/07

NAME 460 VOLT, 2C, MAIN & DRIVE DISC
 , DRIVE FUSE, EMB2, FRAME C2N12
 , DVDT, CMS

THE TRANE COMPANY
 A DIVISION OF
 AMERICAN STANDARD INC.

A	SP08061	10/08
REV	ECN	DATE

APR

MODEL

PAGE 1 OF 2

SIZE A

DWG NO.

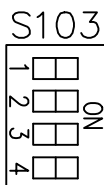
174U6911

REV	A	SP08066	10/08	DATE	
ECON					
-NOTICE-					
THIS DRAWING IS PROPRIETARY AND SHALL NOT BE COPIED OR ITS CONTENTS DISCLOSED TO OUTSIDE PARTIES WITHOUT THE WRITTEN CONSENT OF THE TRANE COMPANY					
DRN	JNW	2/14/07	APR	MODEL	NAME 460 VOLT, 2C MAIN & DRIVE DISC, DRIVE FUSE, EMB2, FRAME C2N12, DVDT, CMS
PAGE	2	OF	2	SIZE	A
DWG	NO.	174U6911			
THE TRANE COMPANY A DIVISION OF AMERICAN STANDARD INC.					

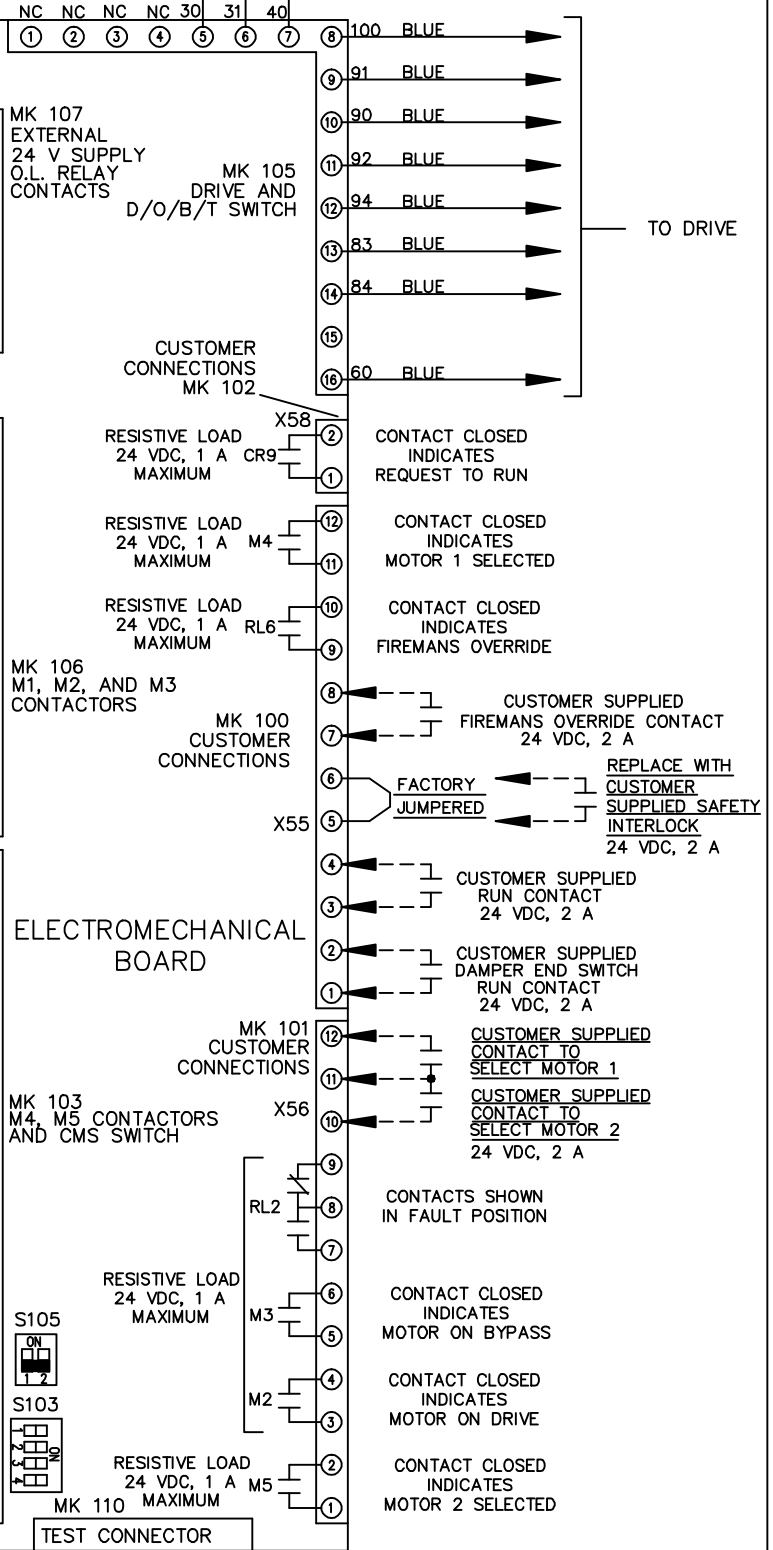
CONTACT SEQUENCE CHART FOR S1 X INDICATES CONTACT CLOSED		
POSITION	CONTACT	
DRIVE	13-14	X
OFF	23-24	X



CONTACT SEQUENCE CHART FOR S2 X INDICATES CONTACT CLOSED			
POSITION	CONTACT	MOTOR 1	MOTOR 2
11-12		X	X
13-14		X	X
21-22		X	X
23-24		X	X



CUSTOMER CONNECTIONS X55, X56, X58
CLASS 2 POWER SOURCE
REQUIRED FOR FIELD CONNECTION
USE CLASS 1 CONDUCTORS
CONDUCTOR SIZE 28-14 AWG



ELECTROMECHANICAL BOARD

TEST CONNECTOR

CUSTOMER SUPPLIED
FIREMANS OVERRIDE CONTACT
24 VDC, 2 A

REPLACE WITH
CUSTOMER
SUPPLIED SAFETY
INTERLOCK
24 VDC, 2 A

CUSTOMER SUPPLIED
RUN CONTACT
24 VDC, 2 A

CUSTOMER SUPPLIED
DAMPER END SWITCH
RUN CONTACT
24 VDC, 2 A

CUSTOMER SUPPLIED
CONTACT TO
SELECT MOTOR 1

CUSTOMER SUPPLIED
CONTACT TO
SELECT MOTOR 2
24 VDC, 2 A

CONTACTS SHOWN
IN FAULT POSITION

CONTACT CLOSED
INDICATES
MOTOR ON BYPASS

CONTACT CLOSED
INDICATES
MOTOR ON DRIVE

CONTACT CLOSED
INDICATES
MOTOR 2 SELECTED