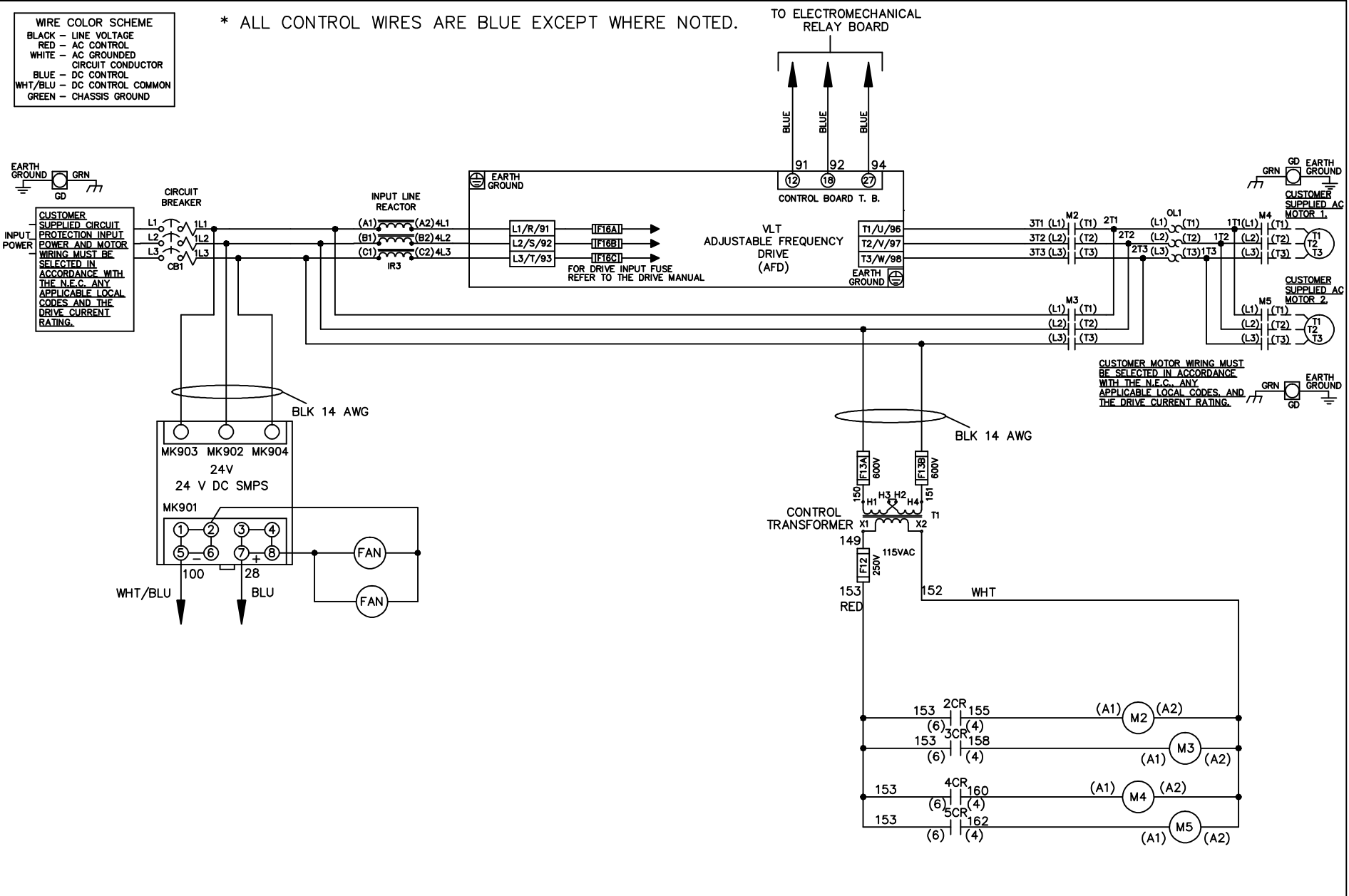


**WIRE COLOR SCHEME**  
 BLACK - LINE VOLTAGE  
 RED - AC CONTROL  
 WHITE - AC GROUNDED  
 BLUE - DC CONTROL  
 WHT/BLU - DC CONTROL COMMON  
 GREEN - CHASSIS GROUND

\* ALL CONTROL WIRES ARE BLUE EXCEPT WHERE NOTED.



CUSTOMER MOTOR WIRING MUST BE SELECTED IN ACCORDANCE WITH THE N.E.C. ANY APPLICABLE LOCAL CODES, AND THE DRIVE CURRENT RATING.

|     |         |       |   |  |                    |     |  |             |        |  |          |
|-----|---------|-------|---|--|--------------------|-----|--|-------------|--------|--|----------|
|     |         |       | -NOTICE-  |  | DRN JNW<br>2/14/07 |     | NAME460 VOLT,2C,CB<br>,DRIVE FUSE,EMB1,FRAME C2N12<br>,REACTOR,CMS |             |        | THE TRANE COMPANY<br>A DIVISION OF<br>AMERICAN STANDARD INC. |          |
| A   | SP08061 | 10/08 | THIS DRAWING IS PROPRIETARY AND SHALL NOT BE COPIED OR ITS CONTENTS DISCLOSED TO OUTSIDE PARTIES WITHOUT THE WRITTEN CONSENT OF THE TRANE COMPANY |  |                    | APR | MODEL  | PAGE 1 OF 2 | SIZE A | DWG NO.  | 174U6967 |
| REV | ECN     | DATE  |   |  |                    |     |  |             |        |  |          |

|     |         |       |
|-----|---------|-------|
| REV | ECN     | DATE  |
| A   | SP08066 | 10/08 |

| CONTACT SEQUENCE CHART FOR S1<br>X INDICATES CONTACT CLOSED |       |            |
|---|-------|------------|
| POSITION  | DRIVE | OFF BYPASS |
| 13-14   |       | X          |
| 23-24   | X     |            |

-NOTICE-

THIS DRAWING IS PROPRIETARY AND SHALL NOT BE COPIED OR ITS CONTENTS DISCLOSED TO OUTSIDE PARTIES WITHOUT THE WRITTEN CONSENT OF THE TRANE COMPANY

DRN JNW  
2/14/07  
APR

NAME 460 VOLT, 2C, CB  
, DRIVE FUSE, EMB1, FRAME C2N12  
, REACTOR, CMS

MODEL

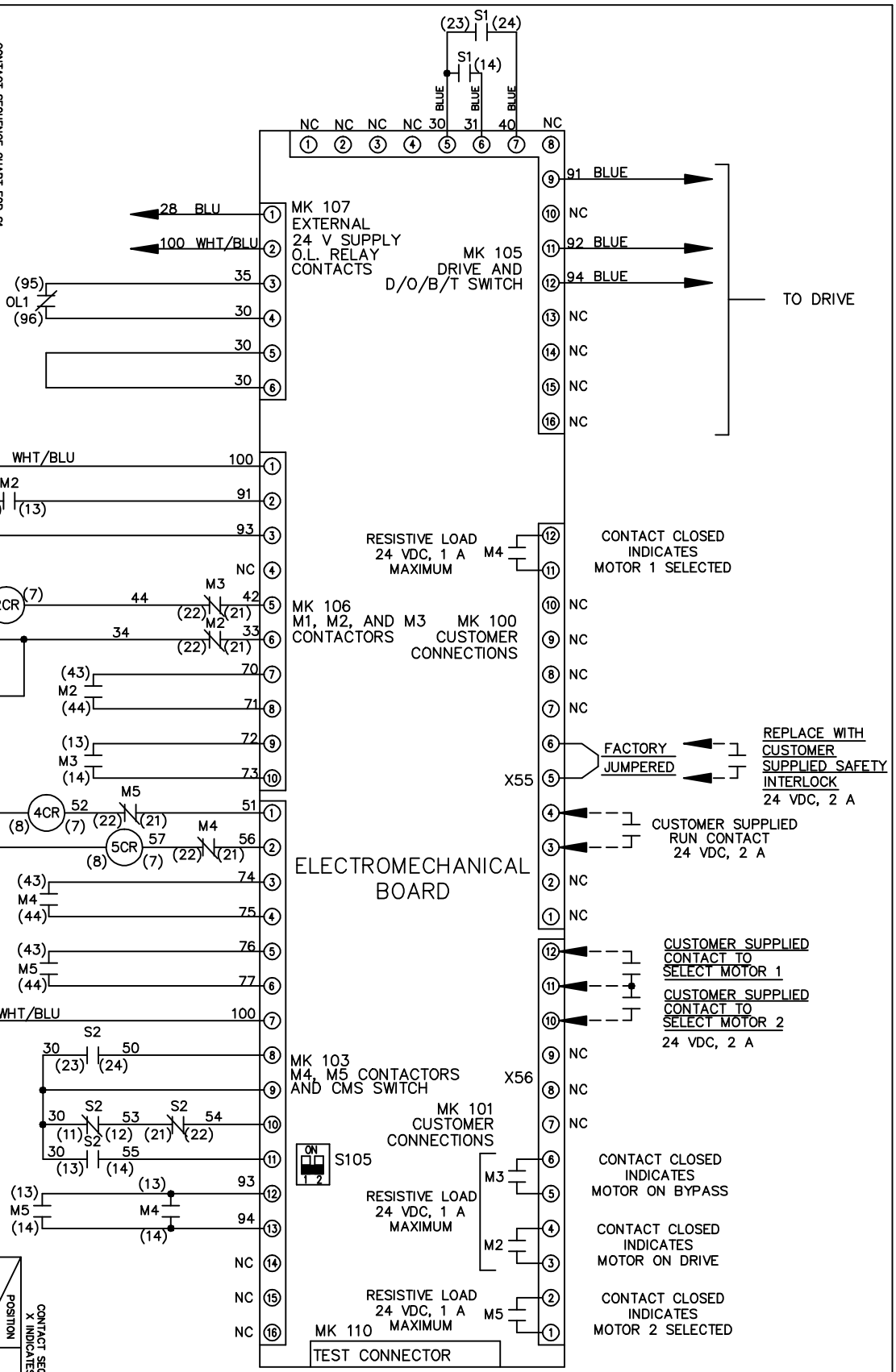
PAGE 2 OF 2

SIZE A

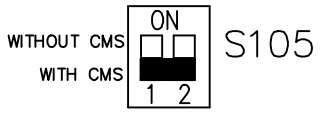
DWG NO. 174U6967

THE TRANE COMPANY  
A DIVISION OF  
AMERICAN STANDARD INC.

| CONTACT SEQUENCE CHART FOR S2<br>X INDICATES CONTACT CLOSED |         |         |
|---|---------|---------|
| POSITION  | MOTOR 1 | MOTOR 2 |
| 11-12   | X       |         |
| 13-14   |         | X       |
| 21-22   | X       |         |
| 23-24   |         | X       |



FACTORY SETTING



CUSTOMER CONNECTIONS X55, X56  
CLASS 2 POWER SOURCE  
REQUIRED FOR FIELD CONNECTION  
USE CLASS 1 CONDUCTORS  
CONDUCTOR SIZE 28-14 AWG