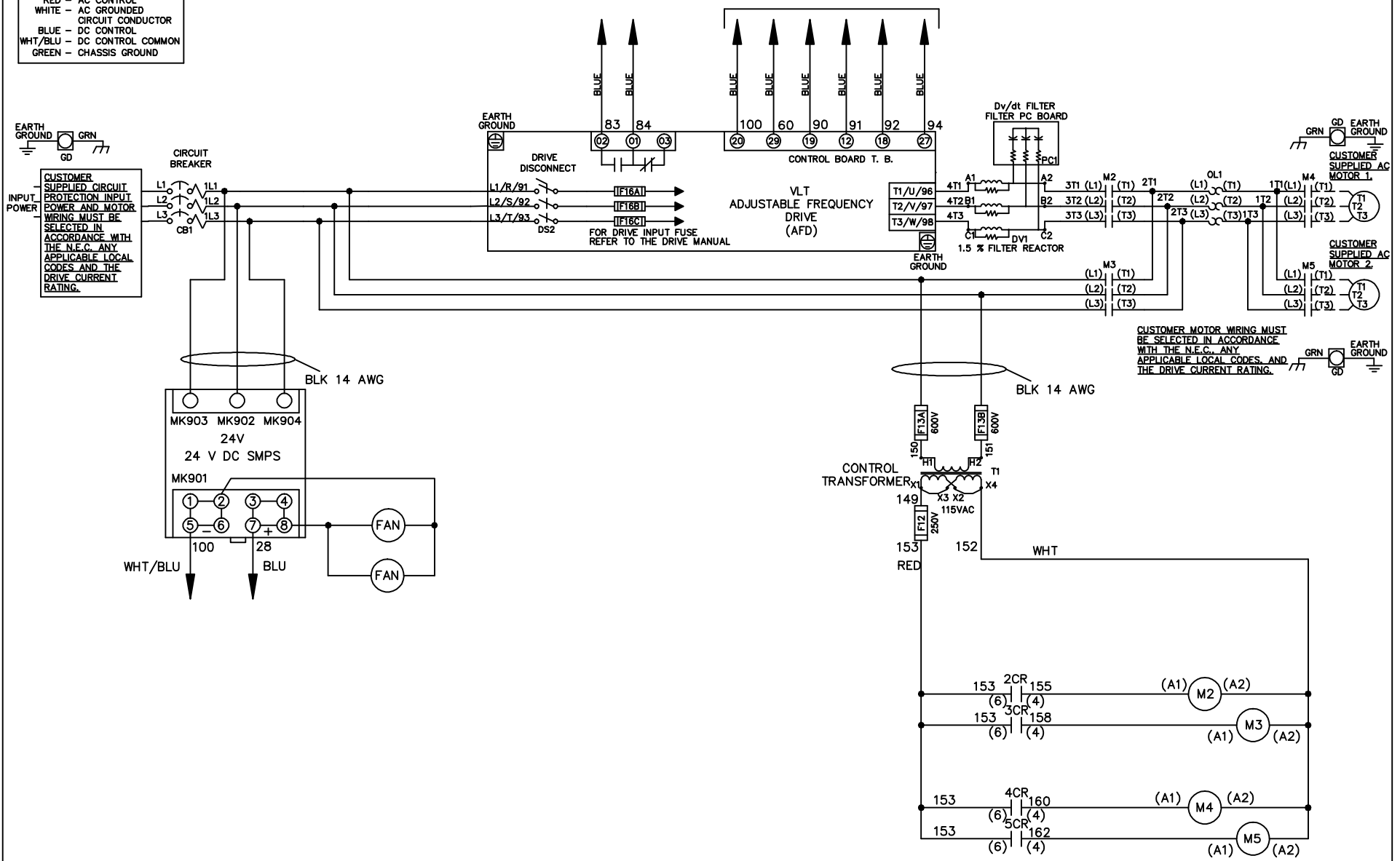


WIRE COLOR SCHEME
 BLACK - LINE VOLTAGE
 RED - AC CONTROL
 WHITE - AC GROUNDED
 CIRCUI CONDUCTOR
 BLUE - DC CONTROL
 WHT/BLU - DC CONTROL COMMON
 GREEN - CHASSIS GROUND

* ALL CONTROL WIRES ARE BLUE EXCEPT WHERE NOTED. TO ELECTROMECHANICAL RELAY BOARD



CUSTOMER MOTOR WIRING MUST BE SELECTED IN ACCORDANCE WITH THE N.E.C. ANY APPLICABLE LOCAL CODES, AND THE DRIVE CURRENT RATING.

-NOTICE-

THIS DRAWING IS PROPRIETARY AND SHALL NOT BE COPIED OR ITS CONTENTS DISCLOSED TO OUTSIDE PARTIES WITHOUT THE WRITTEN CONSENT OF THE TRANE COMPANY

DRN JNW
2/8/07

NAME600 VOLT,2C,CB & DRIVE DISC
,DRIVE FUSE,EMB2,FRAME C2N12
,DVDT,CMS

THE TRANE COMPANY
A DIVISION OF
AMERICAN STANDARD INC.

A	SP08061	10/08
REV	ECN	DATE

APR

MODEL

PAGE 1 OF 2

SIZE A

DWG NO.

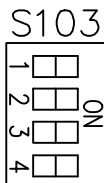
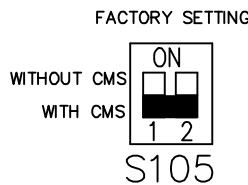
174U7133

REV	A	SP08066	10/08	DATE
ECON				
-NOTICE-				
THIS DRAWING IS PROPRIETARY AND SHALL NOT BE COPIED OR ITS CONTENTS DISCLOSED TO OUTSIDE PARTIES WITHOUT THE WRITTEN CONSENT OF THE TRANE COMPANY				
DRN JNW	2/14/07	APR		
MODEL	NAME 600 VOLT, 2C, CB & DRIVE DISC, DRIVE FUSE, EMB2, FRAME C2N12, DVDT, CMS			
PAGE 2 OF 2	SIZE A	DWG NO.	174U7133	
THE TRANE COMPANY A DIVISION OF AMERICAN STANDARD INC.				

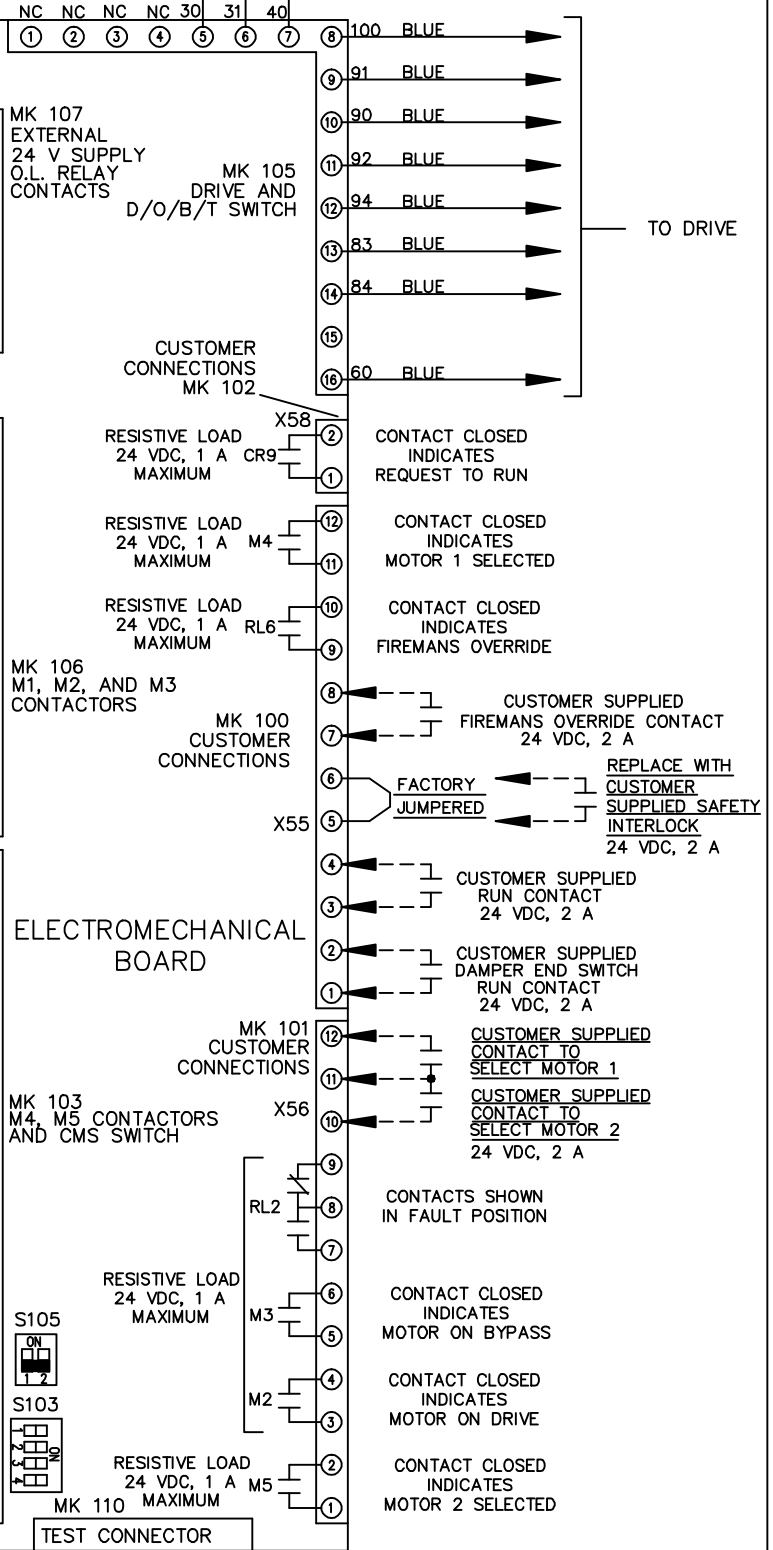
CONTACT	POSITION	
13-14	DRIVE	
13-14	OFF	
23-24	BYPASS	
13-14	DRIVE	X
13-14	OFF	
23-24	BYPASS	X



CONTACT	POSITION	
11-12	MOTOR 1	
13-14	MOTOR 1	
21-22	MOTOR 2	
23-24	MOTOR 2	
11-12	MOTOR 1	X
13-14	MOTOR 1	X
21-22	MOTOR 2	X
23-24	MOTOR 2	X

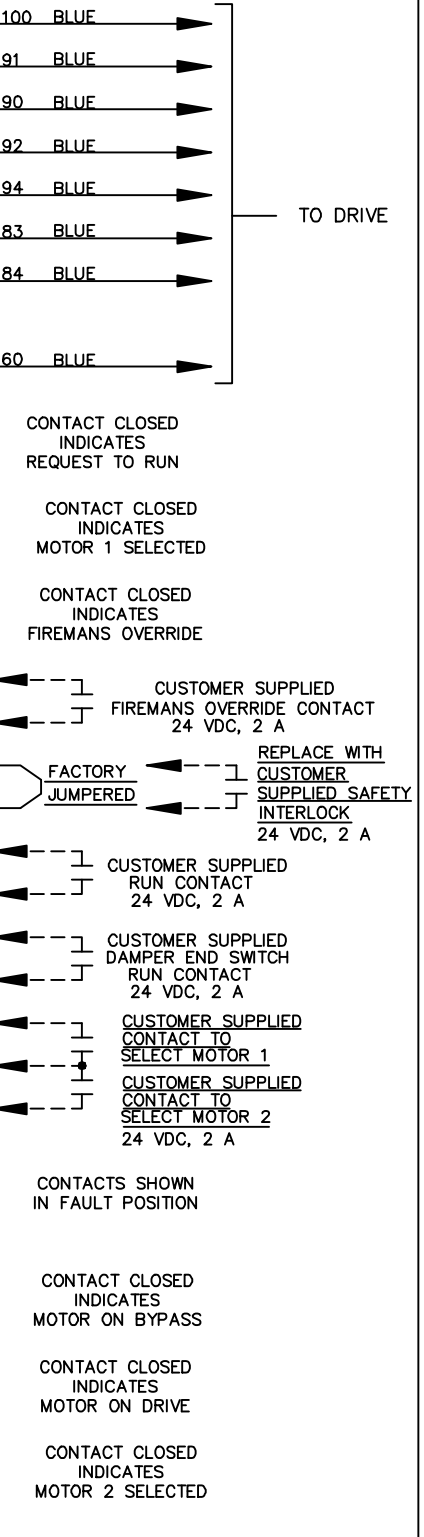


CUSTOMER CONNECTIONS X55, X56, X58
CLASS 2 POWER SOURCE
REQUIRED FOR FIELD CONNECTION
USE CLASS 1 CONDUCTORS
CONDUCTOR SIZE 28-14 AWG



ELECTROMECHANICAL BOARD

TEST CONNECTOR



CONTACT CLOSED INDICATES REQUEST TO RUN
CONTACT CLOSED INDICATES MOTOR 1 SELECTED
CONTACT CLOSED INDICATES FIREMANS OVERRIDE
CUSTOMER SUPPLIED FIREMANS OVERRIDE CONTACT 24 VDC, 2 A
REPLACE WITH CUSTOMER SUPPLIED SAFETY INTERLOCK 24 VDC, 2 A
CUSTOMER SUPPLIED RUN CONTACT 24 VDC, 2 A
CUSTOMER SUPPLIED DAMPER END SWITCH RUN CONTACT 24 VDC, 2 A
CUSTOMER SUPPLIED CONTACT TO SELECT MOTOR 1
CUSTOMER SUPPLIED CONTACT TO SELECT MOTOR 2 24 VDC, 2 A
CONTACTS SHOWN IN FAULT POSITION
CONTACT CLOSED INDICATES MOTOR ON BYPASS
CONTACT CLOSED INDICATES MOTOR ON DRIVE
CONTACT CLOSED INDICATES MOTOR 2 SELECTED