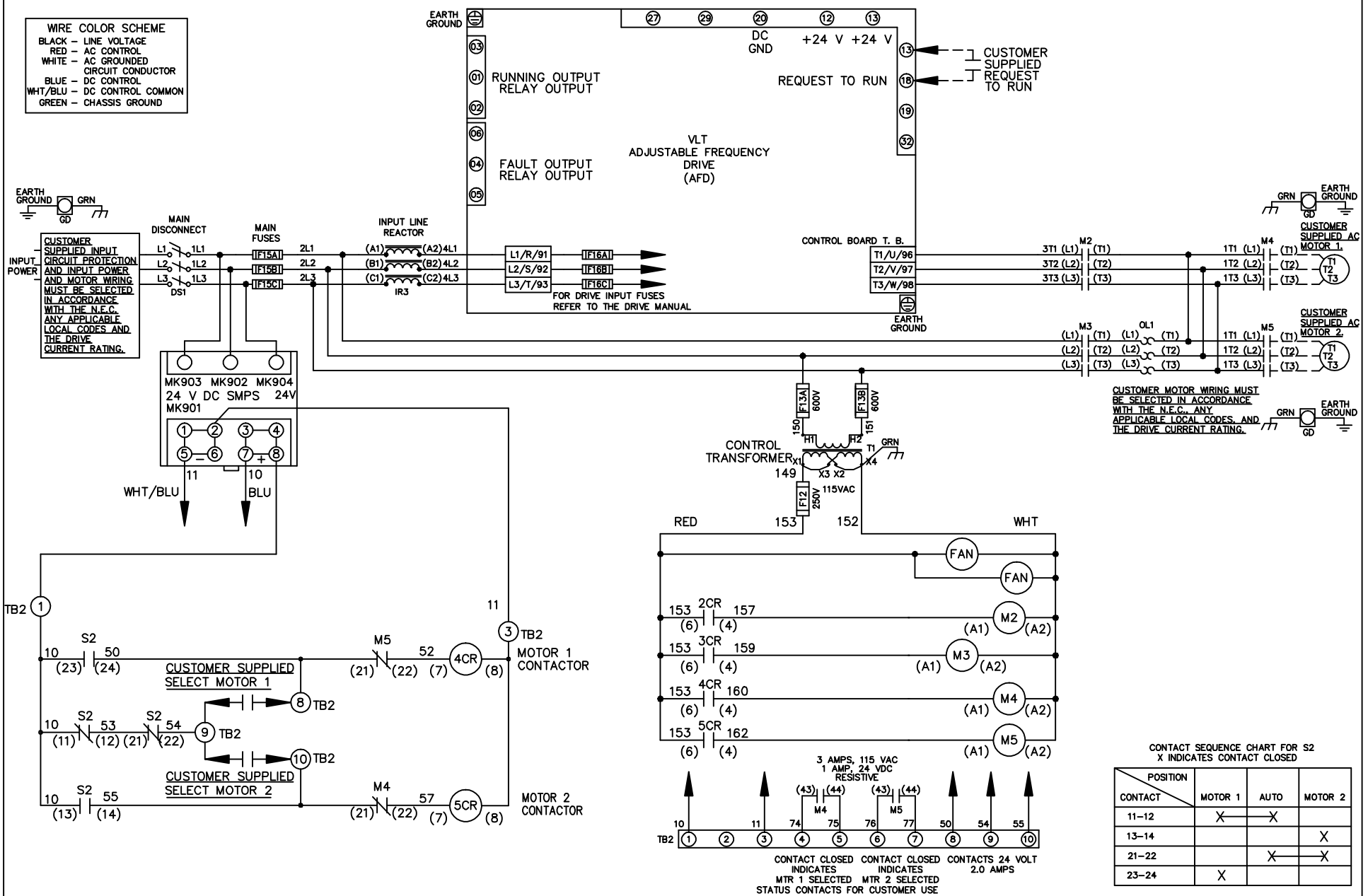


WIRE COLOR SCHEME
 BLACK - LINE VOLTAGE
 RED - AC CONTROL
 WHITE - AC GROUNDED
 CIRCUIT CONDUCTOR
 BLUE - DC CONTROL
 WHT/BLU - DC CONTROL COMMON
 GREEN - CHASSIS GROUND



CUSTOMER MOTOR WIRING MUST BE SELECTED IN ACCORDANCE WITH THE N.E.C. ANY APPLICABLE LOCAL CODES AND THE DRIVE CURRENT RATING.

CONTACT SEQUENCE CHART FOR S2
 X INDICATES CONTACT CLOSED

CONTACT	MOTOR 1	AUTO	MOTOR 2
11-12	X	X	
13-14			X
21-22		X	X
23-24	X		

REV	ECN	DATE
A	SP08061	10/08

-NOTICE-
 THIS DRAWING IS PROPRIETARY AND SHALL NOT BE COPIED OR ITS CONTENTS DISCLOSED TO OUTSIDE PARTIES WITHOUT THE WRITTEN CONSENT OF THE TRANE COMPANY

DRN JNW
 2/14/07
 APR

NAME 600 VOLT, 2C, MAIN DISC
 , MAIN FUSE, ECB, FRAME D1-D2
 , REACTOR, CMS

THE TRANE COMPANY
 A DIVISION OF
 AMERICAN STANDARD INC.

MODEL PAGE 1 OF 2 SIZE A DWG NO. 174U7531

REV	ECN	DATE
A	SP08066	10/08

-NOTICE-
THIS DRAWING IS PROPRIETARY AND SHALL NOT BE COPIED OR ITS CONTENTS DISCLOSED TO OUTSIDE PARTIES WITHOUT THE WRITTEN CONSENT OF THE TRANE COMPANY

DRN JUNW
2/14/07
APR

NAME 600 VOLT, 2C, MAIN DISC
, MAIN FUSE, ECB, FRAME D1-D2
, REACTOR, CMS

MODEL

PAGE 2 OF 2

SIZE A

DWG NO. 174U7531

THE TRANE COMPANY
A DIVISION OF
AMERICAN STANDARD INC.

CUSTOMER CONNECTIONS X56, X57, X59
CLASS 2 POWER SOURCE
REQUIRED FOR FIELD CONNECTION
USE CLASS 1 CONDUCTORS
CONDUCTOR SIZE 28-14 AWG



ECB BOARD TB1

① EXTERNAL 24 V SUPPLY X58
②

CUSTOMER MOTOR RUNNING CONTACT X56
① 0-24 VDC MAXIMUM 1 AMPS DC RESISTIVE
②
NC ③

NC ④ + 24 V
⑤
NC ⑥
NC ⑦ + 24 V
⑧
NC ⑨
NC ⑩ + 24 V
NC ⑪
NC ⑫

① SAFETY INTERLOCK X57
② COM

③ CMS MOTOR SELECTED
④
⑤ O.L. TRIP
⑥ M2 STATUS
⑦ M3 STATUS
⑧ BYPASS MODE ENABLE
⑨ BYPASS OVERRIDE
⑩ O.L. RESET

① COM X59
② COM

NC ③
NC ④
⑤ DRIVE MODE
⑥ BYPASS MODE 24 VDC 40 mA MAX
⑦ COM
⑧ COM

TEST CONNECTOR MK 110