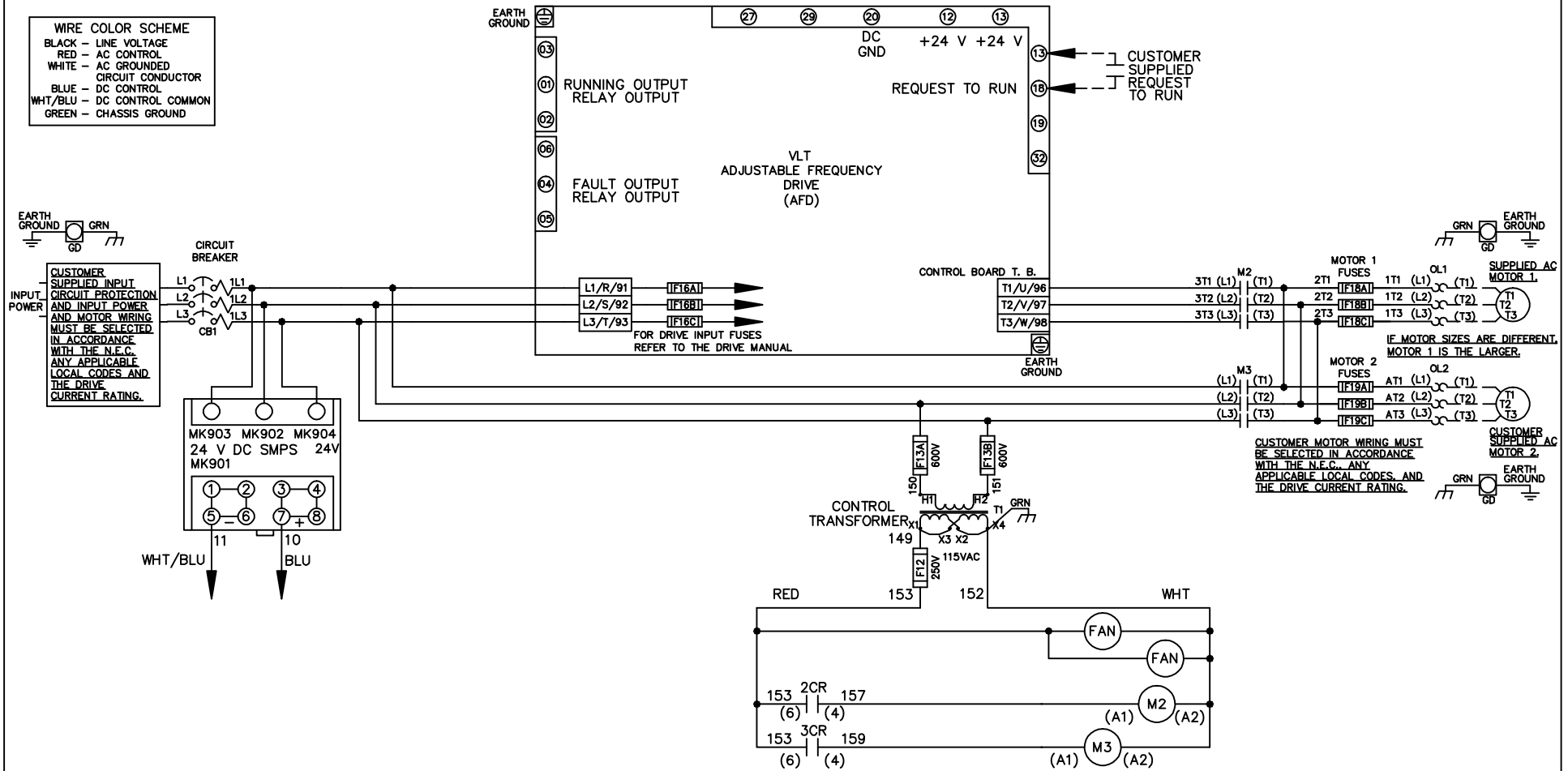


WIRE COLOR SCHEME
 BLACK - LINE VOLTAGE
 RED - AC CONTROL
 WHITE - AC GROUNDED
 CIRCUIT CONDUCTOR
 BLUE - DC CONTROL
 WHT/BLU - DC CONTROL COMMON
 GREEN - CHASSIS COMMON



| | | | | | | | | | | |
|-----|---------|-------|--|--|--------------------|-----|---|-------------|--|------------------|
| | | | -NOTICE- | | DRN JNW 2/14/07 | | NAME 600 VOLT,2C,CB ,DRIVE FUSE,ECB,FRAME D1-D2 ,NO REACTOR & DVDT,DUAL MTR | | THE TRANE COMPANY A DIVISION OF AMERICAN STANDARD INC. | |
| A | SP08061 | 10/08 | THIS DRAWING IS PROPRIETARY AND SHALL NOT BE COPIED OR ITS CONTENTS DISCLOSED TO OUTSIDE PARTIES WITHOUT THE WRITTEN CONSENT OF THE TRANE COMPANY | | | APR | MODEL | PAGE 1 OF 2 | SIZE A | DWG NO. 174U7542 |
| REV | ECN | DATE | | | | | | | | |

| | | |
|-----|---------|-------|
| REV | ECN | DATE |
| A | SP08066 | 10/08 |

-NOTICE-
THIS DRAWING IS PROPRIETARY AND SHALL NOT BE COPIED OR ITS CONTENTS DISCLOSED TO OUTSIDE PARTIES WITHOUT THE WRITTEN CONSENT OF THE TRANE COMPANY

DRN JUNW
2/14/07
APR

NAME 600 VOLT, 2C, CB
, DRIVE FUSE, ECB, FRAME D1-D2
, NO REACTOR & DVDI, DUAL MTR

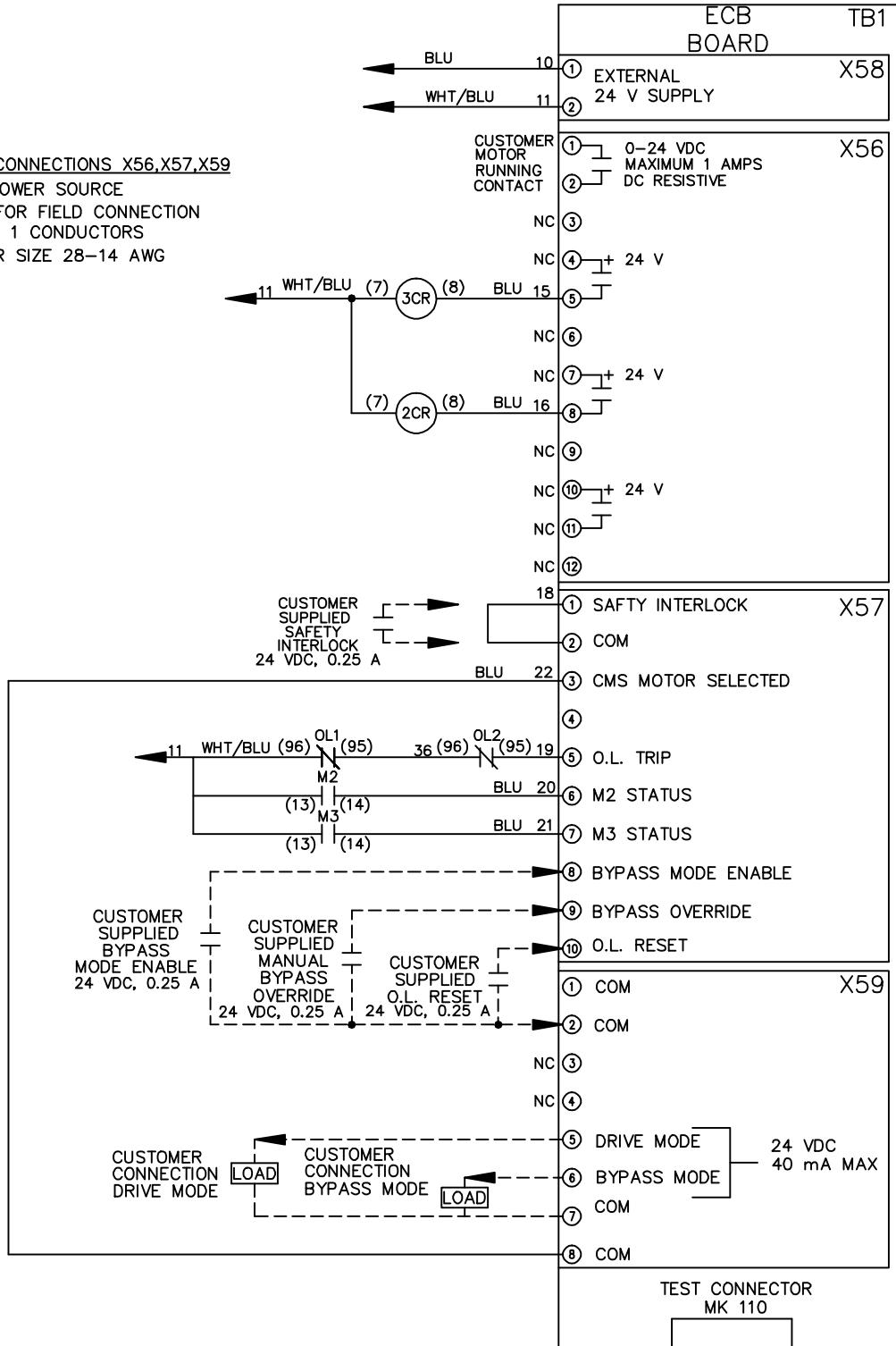
MODEL

PAGE 2 OF 2

SIZE A
DWG NO. 174U7542

THE TRANE COMPANY
A DIVISION OF
AMERICAN STANDARD INC.

CUSTOMER CONNECTIONS X56, X57, X59
CLASS 2 POWER SOURCE
REQUIRED FOR FIELD CONNECTION
USE CLASS 1 CONDUCTORS
CONDUCTOR SIZE 28-14 AWG



ECB BOARD TB1

① EXTERNAL 24 V SUPPLY X58
②

CUSTOMER MOTOR RUNNING CONTACT X56
① 0-24 VDC MAXIMUM 1 AMPS DC RESISTIVE
②
NC ③

NC ④ + 24 V
⑤

NC ⑥
NC ⑦ + 24 V
⑧

NC ⑨
NC ⑩ + 24 V
NC ⑪

NC ⑫
18

① SAFETY INTERLOCK X57
② COM

③ CMS MOTOR SELECTED
④

⑤ O.L. TRIP
⑥ M2 STATUS
⑦ M3 STATUS

⑧ BYPASS MODE ENABLE
⑨ BYPASS OVERRIDE

⑩ O.L. RESET
① COM X59
② COM

NC ③
NC ④

⑤ DRIVE MODE
⑥ BYPASS MODE 24 VDC 40 mA MAX
⑦ COM

⑧ COM

TEST CONNECTOR MK 110