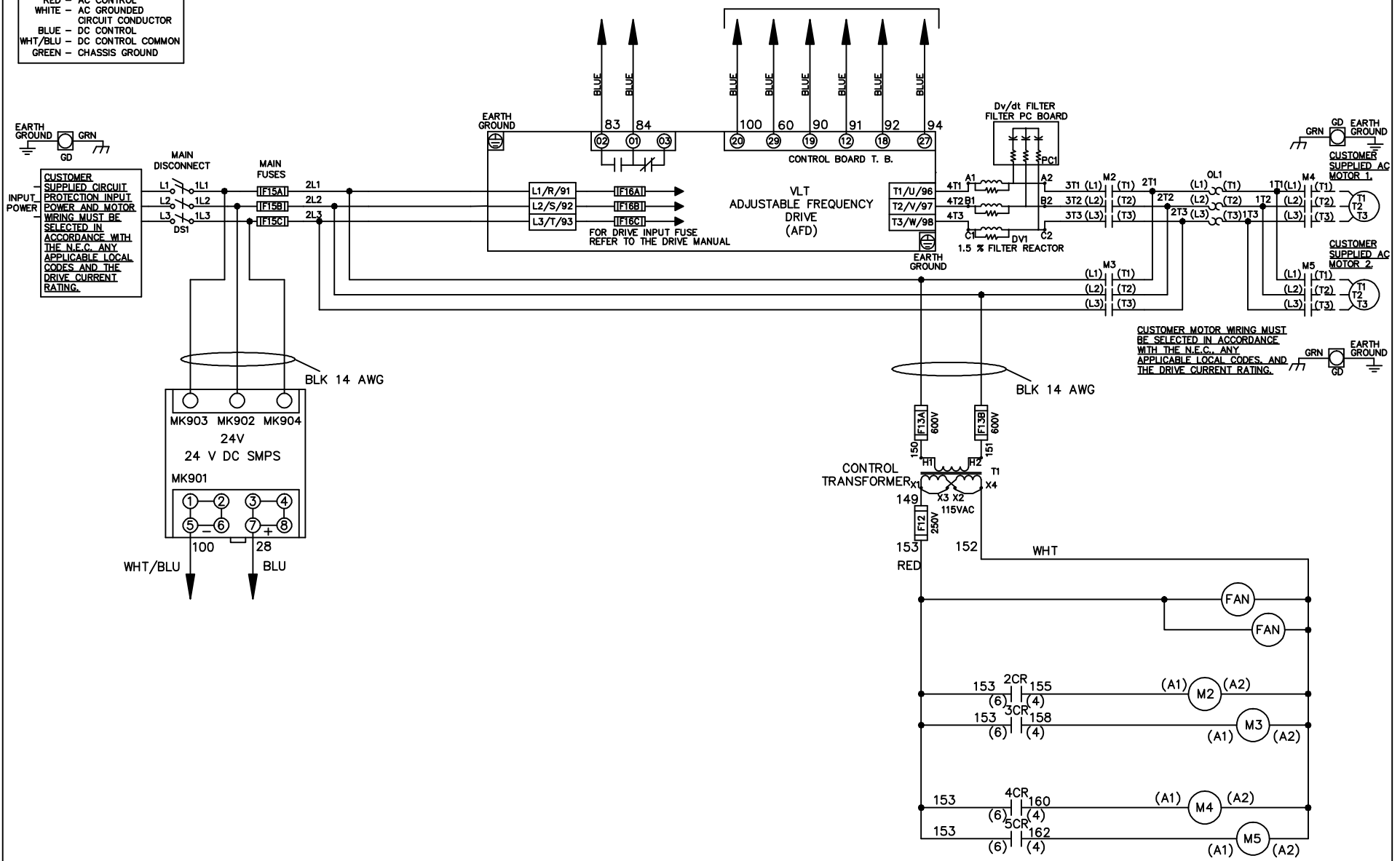


**WIRE COLOR SCHEME**  
 BLACK - LINE VOLTAGE  
 RED - AC CONTROL  
 WHITE - AC GROUND  
 BLUE - DC CONTROL  
 WHT/BLU - DC CONTROL COMMON  
 GREEN - CHASSIS GROUND

\* ALL CONTROL WIRES ARE BLUE EXCEPT WHERE NOTED. TO ELECTROMECHANICAL RELAY BOARD



CUSTOMER MOTOR WIRING MUST BE SELECTED IN ACCORDANCE WITH THE N.E.C. ANY APPLICABLE LOCAL CODES AND THE DRIVE CURRENT RATING.

-NOTICE-

THIS DRAWING IS PROPRIETARY AND SHALL NOT BE COPIED OR ITS CONTENTS DISCLOSED TO OUTSIDE PARTIES WITHOUT THE WRITTEN CONSENT OF THE TRANE COMPANY

DRN JNW  
2/8/07

NAME 600 VOLT, 2C, MAIN DISC  
 , MAIN FUSE, EMB2, FRAME D1-D2  
 , DVDT, CMS

THE TRANE COMPANY  
 A DIVISION OF  
 AMERICAN STANDARD INC.

A	SP08061	10/08
REV	ECN	DATE

APR

MODEL

PAGE 1 OF 2

SIZE A

DWG NO.

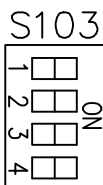
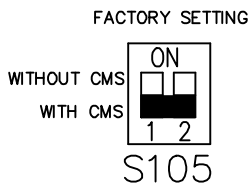
174U7610

REV	A	ECON	DATE	DRN JNW	APR	MODEL	PAGE 2 OF 2	SIZE	DWG NO.
	SP08066		10/08	2/14/07				A	174U7610
<p>THIS DRAWING IS PROPRIETARY AND SHALL NOT BE COPIED OR ITS CONTENTS DISCLOSED TO OUTSIDE PARTIES WITHOUT THE WRITTEN CONSENT OF THE TRANE COMPANY</p>									
<p>NAME 600 VOLT, 2C, MAIN DISC , MAIN FUSE, EMB2, FRAME D1-D2</p>									
<p>THE TRANE COMPANY A DIVISION OF AMERICAN STANDARD INC.</p>									

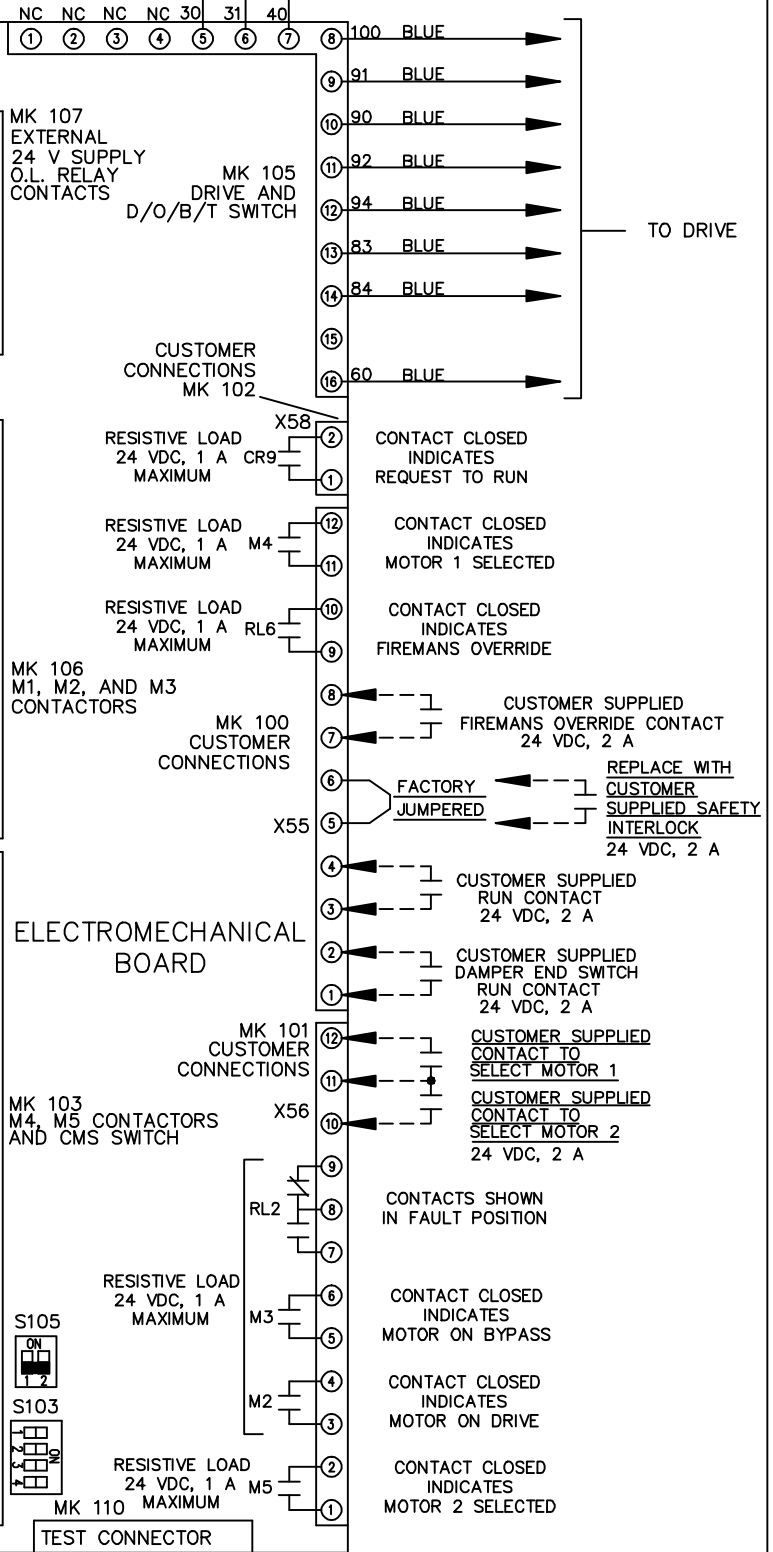
POSITION	CONTACT
DRIVE	13-14
OFF	23-24
BYPASS	
	X



POSITION	CONTACT
MOTOR 1	11-12
AUTO	13-14
MOTOR 2	21-22
	23-24
	X



CUSTOMER CONNECTIONS X55, X56, X58  
CLASS 2 POWER SOURCE  
REQUIRED FOR FIELD CONNECTION  
USE CLASS 1 CONDUCTORS  
CONDUCTOR SIZE 28-14 AWG



ELECTROMECHANICAL BOARD

MK 103  
M4, M5 CONTACTORS  
AND CMS SWITCH

TEST CONNECTOR

RESISTIVE LOAD  
24 VDC, 1 A  
MAXIMUM

RESISTIVE LOAD  
24 VDC, 1 A  
MAXIMUM

CUSTOMER SETTING

AUTOMATIC BYPASS TIME SELECT  
ONLY # 1 ON 30 SECONDS  
ONLY # 2 ON 60 SEC.  
ONLY # 3 ON 300 SEC  
ALL ON 15 SEC.  
ALL OFF NO AUTO BYPASS (FACTORY DEFAULT)

TO DRIVE

CUSTOMER SUPPLIED  
FIREMANS OVERRIDE CONTACT  
24 VDC, 2 A

REPLACE WITH  
CUSTOMER  
SUPPLIED SAFETY  
INTERLOCK  
24 VDC, 2 A

CUSTOMER SUPPLIED  
RUN CONTACT  
24 VDC, 2 A

CUSTOMER SUPPLIED  
DAMPER END SWITCH  
RUN CONTACT  
24 VDC, 2 A

CUSTOMER SUPPLIED  
CONTACT TO  
SELECT MOTOR 1

CUSTOMER SUPPLIED  
CONTACT TO  
SELECT MOTOR 2  
24 VDC, 2 A

CONTACTS SHOWN  
IN FAULT POSITION

CONTACT CLOSED  
INDICATES  
MOTOR ON BYPASS

CONTACT CLOSED  
INDICATES  
MOTOR ON DRIVE

CONTACT CLOSED  
INDICATES  
MOTOR 2 SELECTED