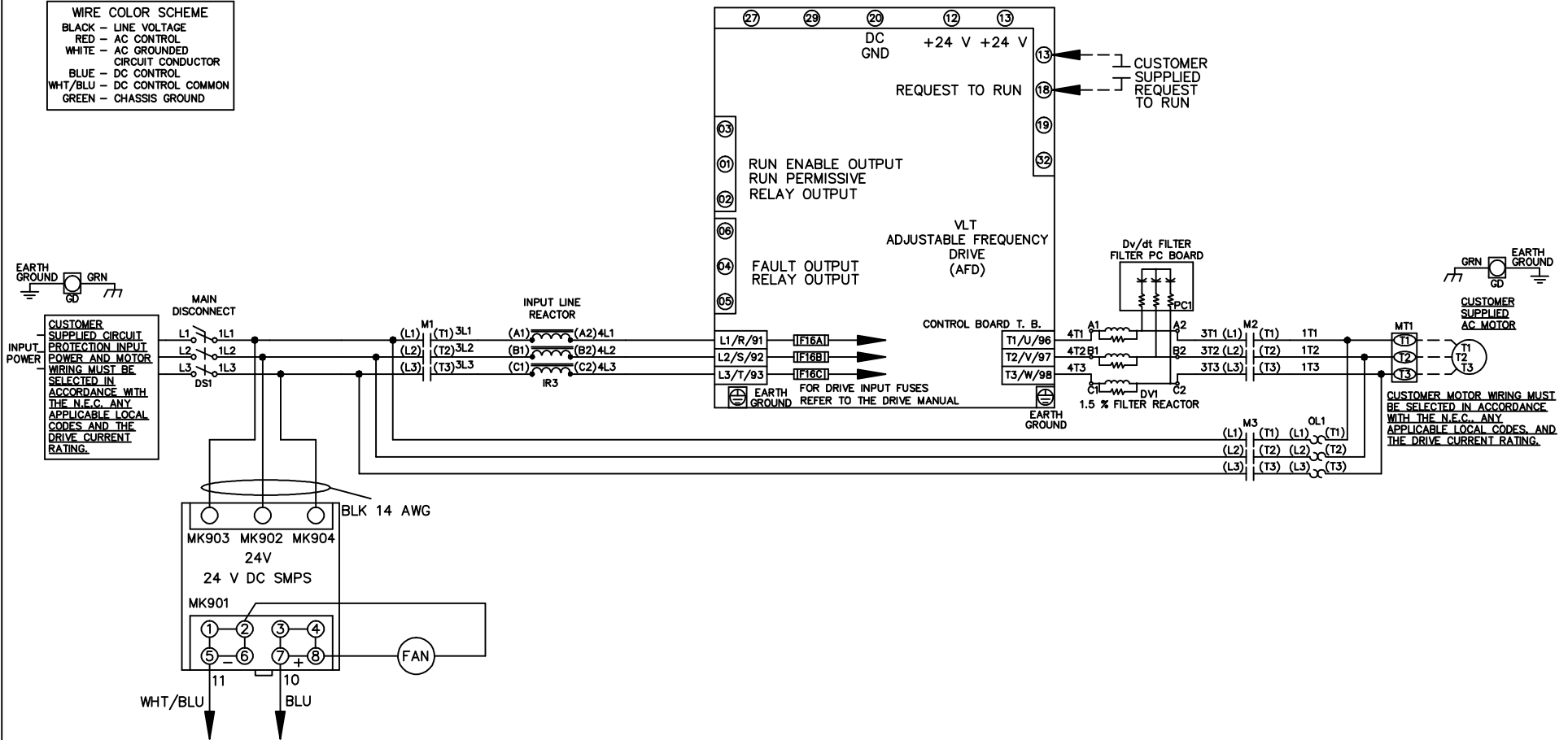


WIRE COLOR SCHEME  
 BLACK - LINE VOLTAGE  
 RED - AC CONTROL  
 WHITE - AC GROUNDED  
 CIRCUIT CONDUCTOR  
 BLUE - DC CONTROL  
 WHT/BLU - DC CONTROL COMMON  
 GREEN - CHASSIS GROUND



			-NOTICE-		DRN JNW 2/14/07		NAME 208-600VOLT,3C,MAIN DISC ,DRIVE FUSE,ECB,FRAME C1N12 ,REACTOR & DVDT,SINGLE MTR		THE TRANE COMPANY A DIVISION OF AMERICAN STANDARD INC.	
A	SP08061	10/08	THIS DRAWING IS PROPRIETARY AND SHALL NOT BE COPIED OR ITS CONTENTS DISCLOSED TO OUTSIDE PARTIES WITHOUT THE WRITTEN CONSENT OF THE TRANE COMPANY			APR	MODEL	PAGE 1 OF 2	SIZE A	DWG NO. 174U8023
REV	ECN	DATE								

REV	ECN	DATE
A	SP08066	10/08

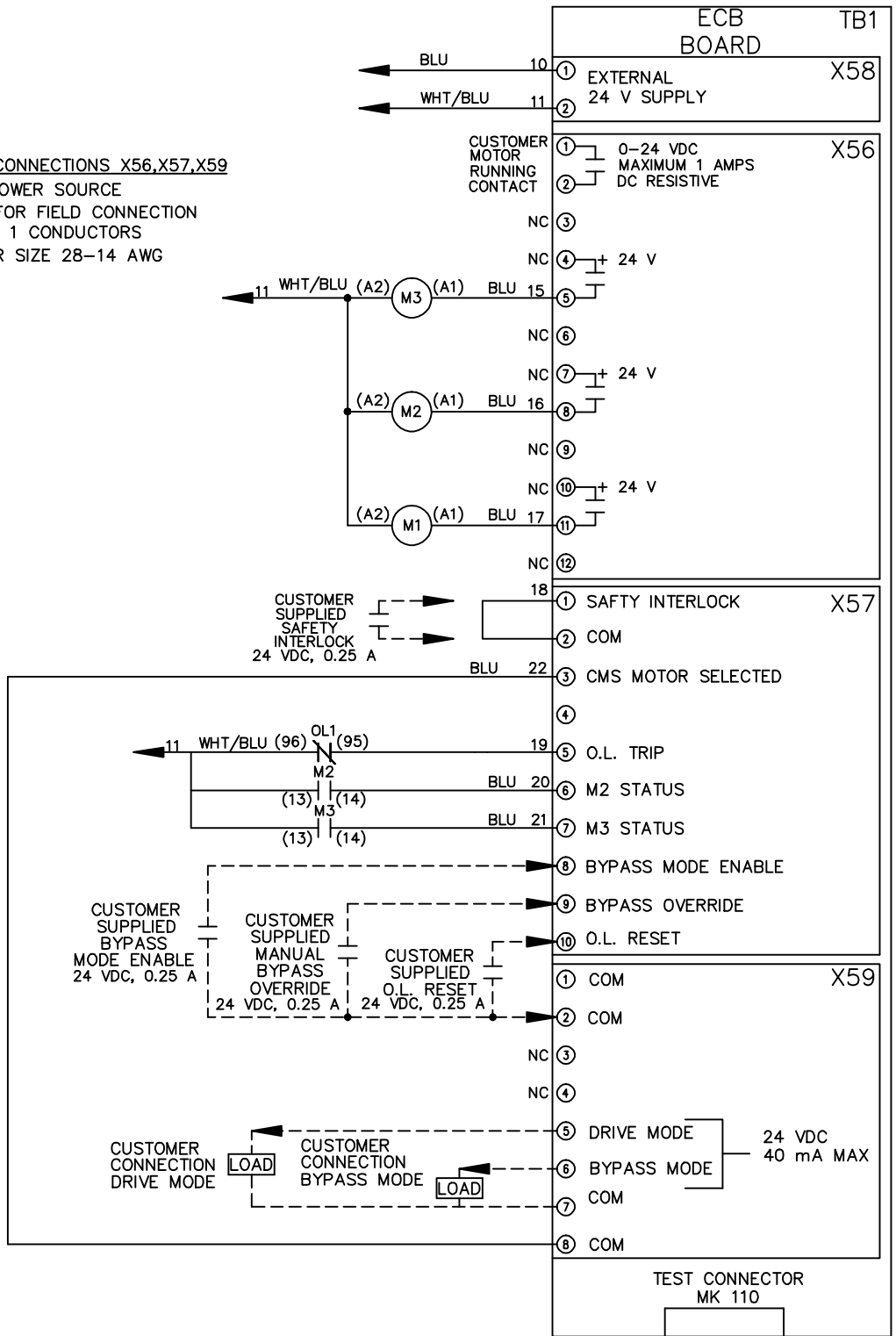
THIS DRAWING IS PROPRIETARY AND SHALL NOT BE COPIED OR ITS CONTENTS DISCLOSED TO OUTSIDE PARTIES WITHOUT THE WRITTEN CONSENT OF THE TRANE COMPANY

DRN JNW  
 2/14/07  
 APR

NAME 208-600VOLT,3C,MAIN DISC  
 ,DRIVE FUSE,ECB,FRAME C1N12  
 ,REACTOR & DVDI,SINGLE MTR  
 MODEL  
 PAGE 2 OF 2  
 SIZE A  
 DWG NO. 174U8023

THE TRANE COMPANY  
 A DIVISION OF  
 AMERICAN STANDARD INC.

**CUSTOMER CONNECTIONS X56,X57,X59**  
 CLASS 2 POWER SOURCE  
 REQUIRED FOR FIELD CONNECTION  
 USE CLASS 1 CONDUCTORS  
 CONDUCTOR SIZE 28-14 AWG



- NOTICE -

ECB BOARD TB1

① EXTERNAL 24 V SUPPLY  
 ②

① CUSTOMER MOTOR RUNNING CONTACT 0-24 VDC MAXIMUM 1 AMPS DC RESISTIVE  
 ②

- NC ③
- NC ④ + 24 V
- NC ⑥
- NC ⑦ + 24 V
- NC ⑨
- NC ⑩ + 24 V
- NC ⑫

① SAFETY INTERLOCK X57

- ② COM
- ③ CMS MOTOR SELECTED
- ④
- ⑤ O.L. TRIP
- ⑥ M2 STATUS
- ⑦ M3 STATUS
- ⑧ BYPASS MODE ENABLE
- ⑨ BYPASS OVERRIDE
- ⑩ O.L. RESET

① COM X59

- ② COM
- NC ③
- NC ④
- ⑤ DRIVE MODE
- ⑥ BYPASS MODE
- ⑦ COM
- ⑧ COM

TEST CONNECTOR MK 110