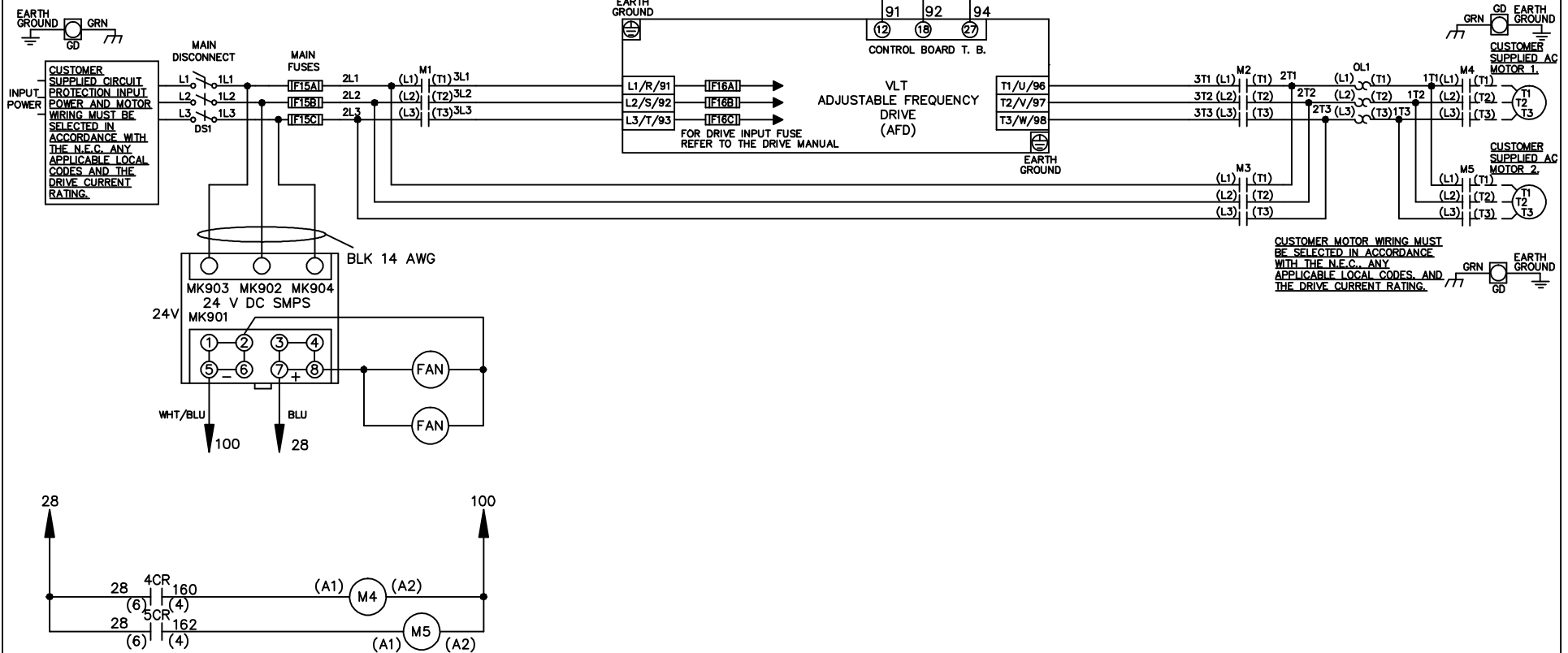


WIRE COLOR SCHEME
 BLACK - LINE VOLTAGE
 RED - AC CONTROL
 WHITE - AC GROUNDED
 CIRCUIT CONDUCTOR
 BLUE - DC CONTROL
 WHT/BLU - DC CONTROL COMMON
 GREEN - CHASSIS GROUND

* ALL CONTROL WIRES ARE BLUE EXCEPT WHERE NOTED. TO ELECTROMECHANICAL RELAY BOARD

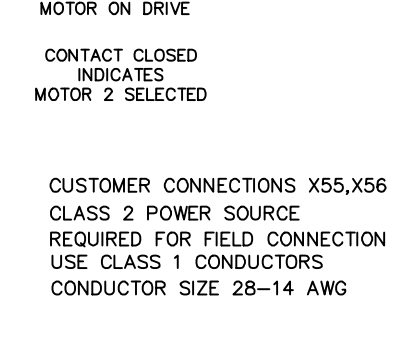
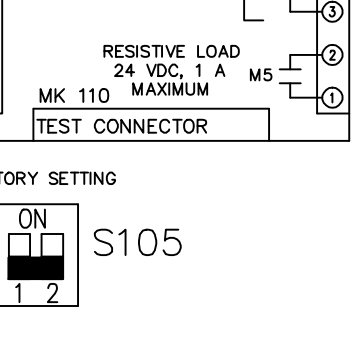
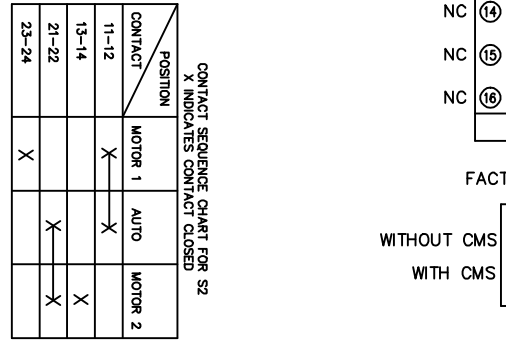
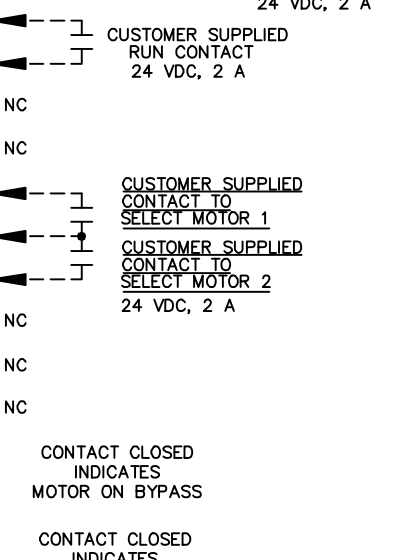
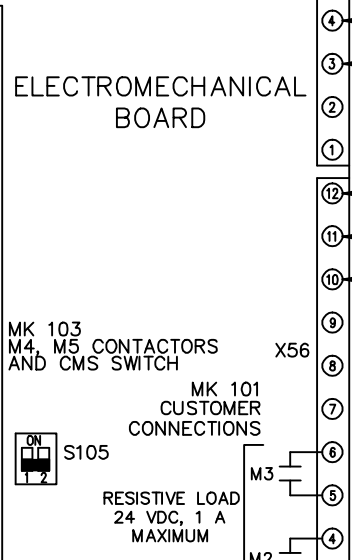
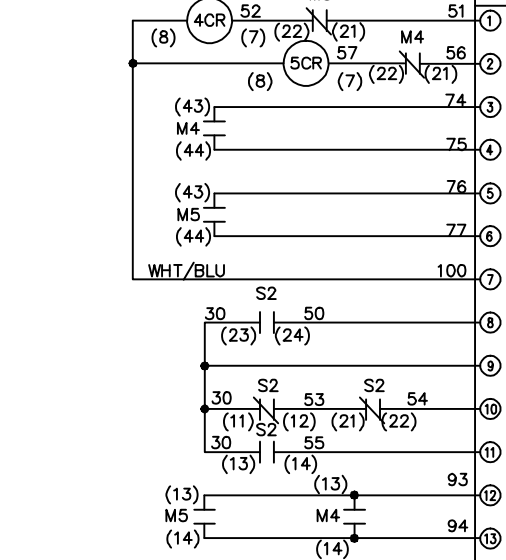
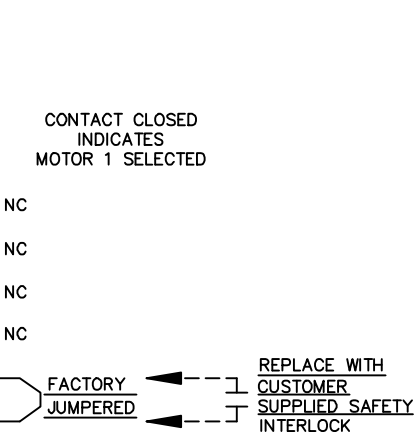
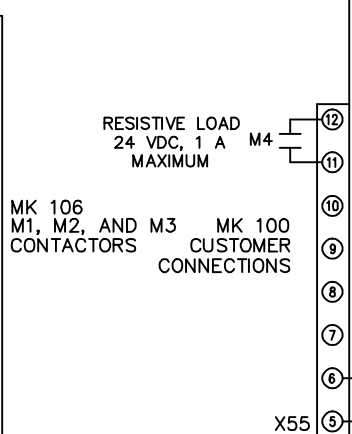
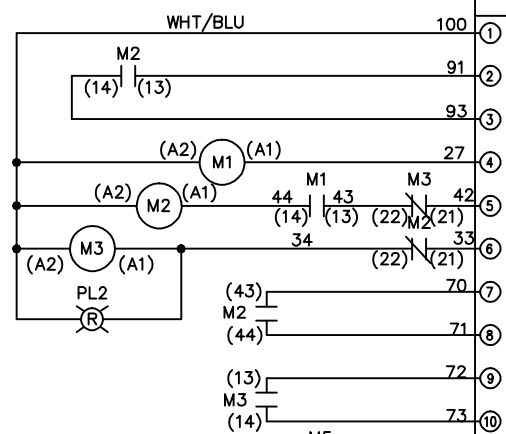
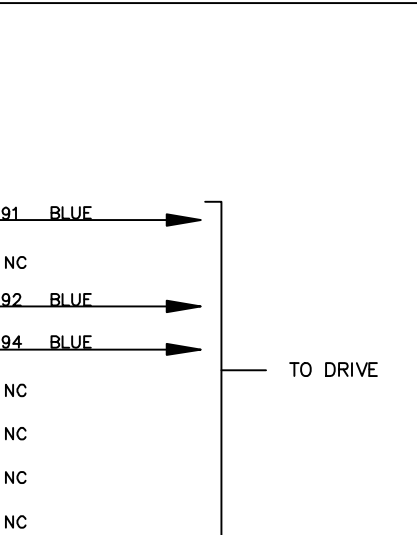
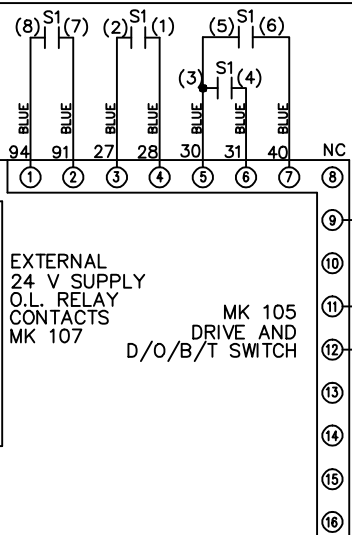
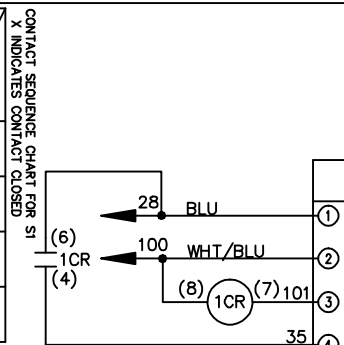


CUSTOMER MOTOR WIRING MUST BE SELECTED IN ACCORDANCE WITH THE N.E.C. ANY APPLICABLE LOCAL CODES, AND THE DRIVE CURRENT RATING.

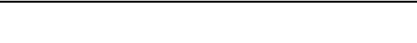
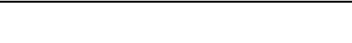
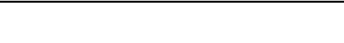
-NOTICE-			DRN JNW 2/14/07	NAME 208-600VOLT,3C,MAIN DISC ,MAIN FUSE,EMB1,FRAME C1N12 ,NO REACTOR & DVDT,CMS		THE TRANE COMPANY A DIVISION OF AMERICAN STANDARD INC.	
A	SP08061	10/08	APR	MODEL	PAGE 1 OF 2	SIZE A	DWG NO. 174U8041
REV	ECN	DATE					

REV	ECON	DATE
A	SP08066	10/08

CONTACT POSITION	DRIVE	OFF BYPASS	TEST
1-2	X		
3-4		X	
5-6			X
7-8			X



CONTACT POSITION	MOTOR 1	AUTO	MOTOR 2
11-12	X	X	
13-14			X
21-22			X
23-24	X		



THIS DRAWING IS PROPRIETARY AND SHALL NOT BE COPIED OR ITS CONTENTS DISCLOSED TO OUTSIDE PARTIES WITHOUT THE WRITTEN CONSENT OF THE TRANE COMPANY

DRN JNW
2/14/07

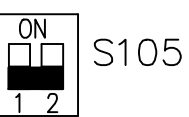
NAME 208-600VOLT,3C,MAIN DISC
,MAN FUSE,EMB1,FRAME C1N12
,NO REACTOR & DVDI,CMS

MODEL
PAGE 2 OF 2
SIZE A
DWG NO. 174U8041

THE TRANE COMPANY
A DIVISION OF
AMERICAN STANDARD INC.

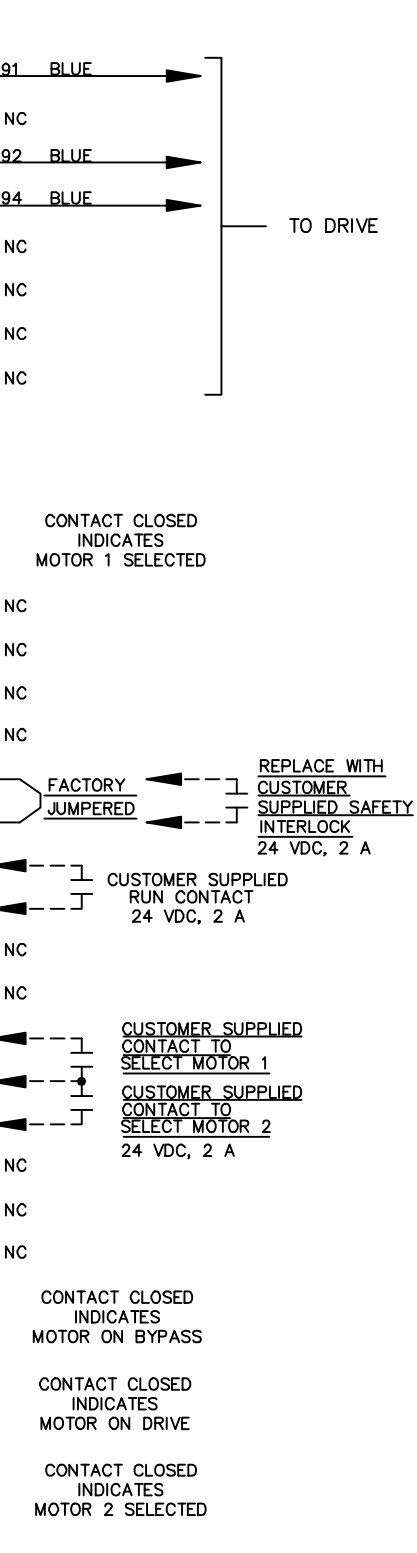
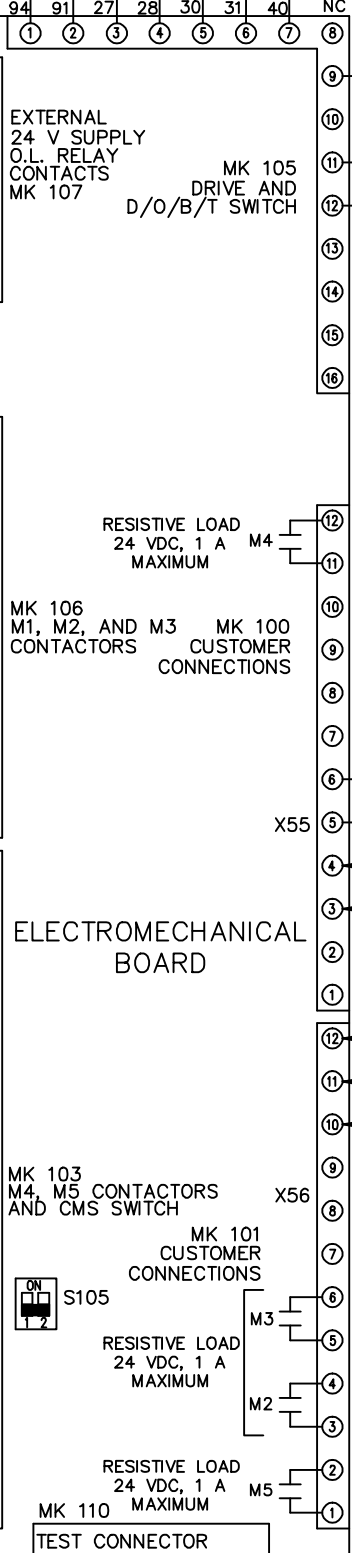
CONTACT SEQUENCE CHART FOR S1
X INDICATES CONTACT CLOSED

CONTACT SEQUENCE CHART FOR S2
X INDICATES CONTACT CLOSED



FACTORY SETTING

WITHOUT CMS
WITH CMS



CUSTOMER CONNECTIONS X55,X56
CLASS 2 POWER SOURCE
REQUIRED FOR FIELD CONNECTION
USE CLASS 1 CONDUCTORS
CONDUCTOR SIZE 28-14 AWG

RESISTIVE LOAD
24 VDC, 1 A
MAXIMUM

RESISTIVE LOAD
24 VDC, 1 A
MAXIMUM

RESISTIVE LOAD
24 VDC, 1 A
MAXIMUM

RESISTIVE LOAD
24 VDC, 1 A
MAXIMUM

RESISTIVE LOAD
24 VDC, 1 A
MAXIMUM

RESISTIVE LOAD
24 VDC, 1 A
MAXIMUM

RESISTIVE LOAD
24 VDC, 1 A
MAXIMUM

RESISTIVE LOAD
24 VDC, 1 A
MAXIMUM

RESISTIVE LOAD
24 VDC, 1 A
MAXIMUM

RESISTIVE LOAD
24 VDC, 1 A
MAXIMUM

RESISTIVE LOAD
24 VDC, 1 A
MAXIMUM

RESISTIVE LOAD
24 VDC, 1 A
MAXIMUM

RESISTIVE LOAD
24 VDC, 1 A
MAXIMUM

RESISTIVE LOAD
24 VDC, 1 A
MAXIMUM

RESISTIVE LOAD
24 VDC, 1 A
MAXIMUM

RESISTIVE LOAD
24 VDC, 1 A
MAXIMUM

EXTERNAL
24 V SUPPLY
O.L. RELAY
CONTACTS
MK 107

MK 105
DRIVE AND
D/O/B/T SWITCH

MK 106
M1, M2, AND M3
CONTACTORS

MK 100
CUSTOMER
CONNECTIONS

MK 103
M4, M5 CONTACTORS
AND CMS SWITCH

MK 101
CUSTOMER
CONNECTIONS

MK 110
CUSTOMER
CONNECTIONS

MK 107
CONTACTS

MK 105
DRIVE AND
D/O/B/T SWITCH

MK 106
M1, M2, AND M3
CONTACTORS

TO DRIVE

CONTACT CLOSED
INDICATES
MOTOR 1 SELECTED

REPLACE WITH
CUSTOMER
SUPPLIED SAFETY
INTERLOCK
24 VDC, 2 A

CUSTOMER SUPPLIED
RUN CONTACT
24 VDC, 2 A

CUSTOMER SUPPLIED
CONTACT TO
SELECT MOTOR 1

CUSTOMER SUPPLIED
CONTACT TO
SELECT MOTOR 2
24 VDC, 2 A

CONTACT CLOSED
INDICATES
MOTOR ON BYPASS

CONTACT CLOSED
INDICATES
MOTOR ON DRIVE

CONTACT CLOSED
INDICATES
MOTOR 2 SELECTED

CONTACT CLOSED
INDICATES
MOTOR 2 SELECTED