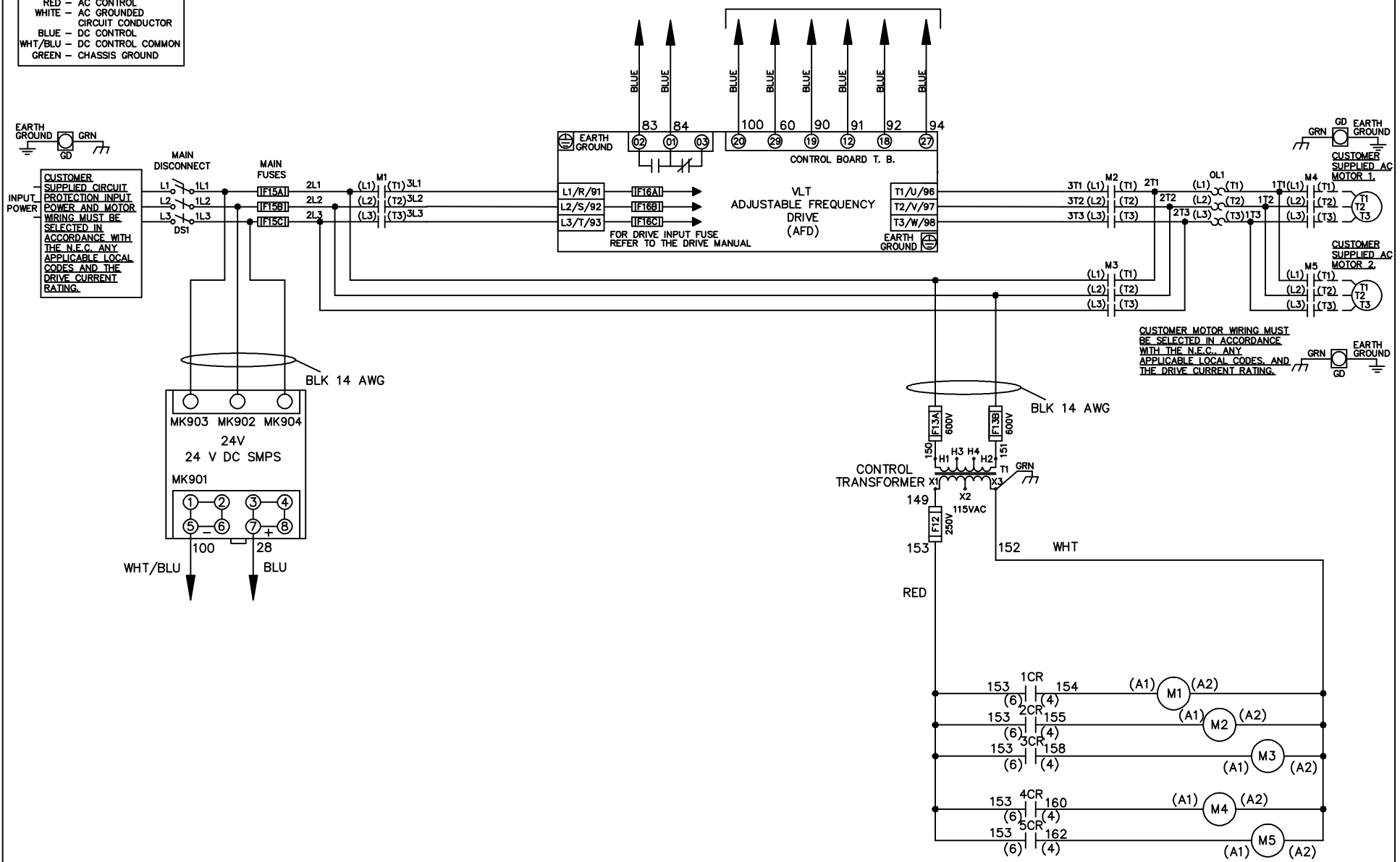


**WIRE COLOR SCHEME**  
 BLACK - LINE VOLTAGE  
 RED - AC CONTROL  
 WHITE - AC GROUNDED  
 BLUE - CIRCUIT CONDUCTOR  
 BLUE - DC CONTROL  
 WHT/BLU - DC CONTROL COMMON  
 GREEN - CHASSIS GROUND

\* ALL CONTROL WIRES ARE BLUE EXCEPT WHERE NOTED. TO ELECTROMECHANICAL RELAY BOARD



|          |         |       |                    |  |             |  |                  |
|----------|---------|-------|--------------------|--|-------------|--|------------------|
| -NOTICE- |         |       | DRN JNW<br>2/14/07 | NAME 208 VOLT, 3C, MAIN DISC<br>, MAIN FUSE, EMB2, FRAME C2N1_<br>, NO REACTOR & DVDT, CMS |             | THE TRANE COMPANY<br>A DIVISION OF<br>AMERICAN STANDARD INC. |                  |
| A        | SP08061 | 10/08 | APR                | MODEL  | PAGE 1 OF 2 | SIZE A   | DWG NO. 174U8106 |
| REV      | ECN     | DATE  |                    |  |             |  |                  |

|     |         |       |
|-----|---------|-------|
| REV | ECN     | DATE  |
| A   | SP08066 | 10/08 |

CONTACT SEQUENCE CHART FOR S1  
X INDICATES CONTACT CLOSED

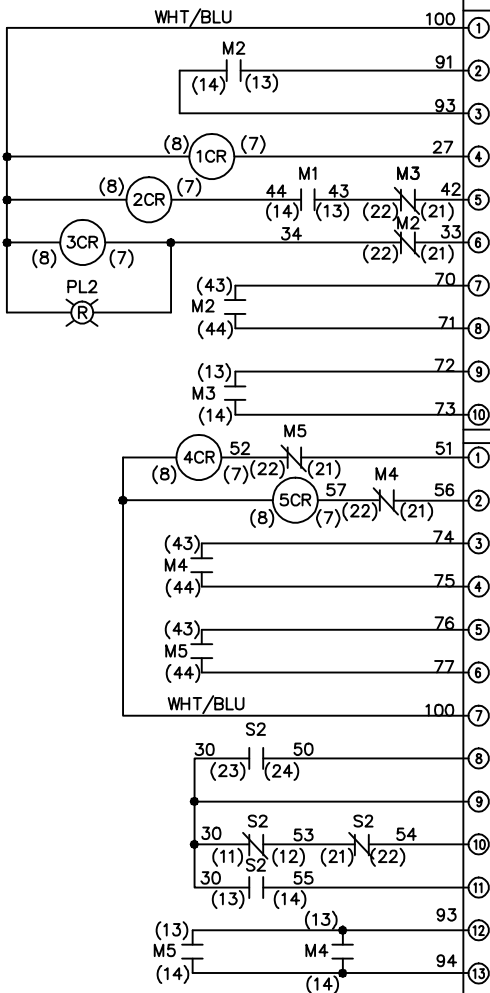
| CONTACT | POSITION | DRIVE | OFF | BYPASS | TEST |
|---------|----------|-------|-----|--------|------|
| 1-2     |          | X     |     |        |      |
| 3-4     |          |       |     | X      | X    |
| 5-6     |          | X     |     |        |      |
| 7-8     |          |       |     |        | X    |

THIS DRAWING IS PROPRIETARY AND SHALL NOT BE COPIED OR ITS CONTENTS DISCLOSED TO OUTSIDE PARTIES WITHOUT THE WRITTEN CONSENT OF THE TRANE COMPANY

DRN JNW  
 APR 2/14/07

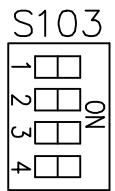
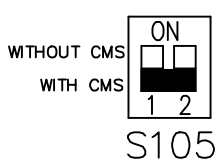
NAME 208 VOLT, 3C, MAIN DISC  
 , MAIN FUSE, EMB2, FRAME C2N1  
 , NO REACTOR & DVD1, CMS

MODEL  
 PAGE 2 OF 2  
 SIZE A  
 DWG NO. 174U8106  
 THE TRANE COMPANY  
 A DIVISION OF  
 AMERICAN STANDARD INC.

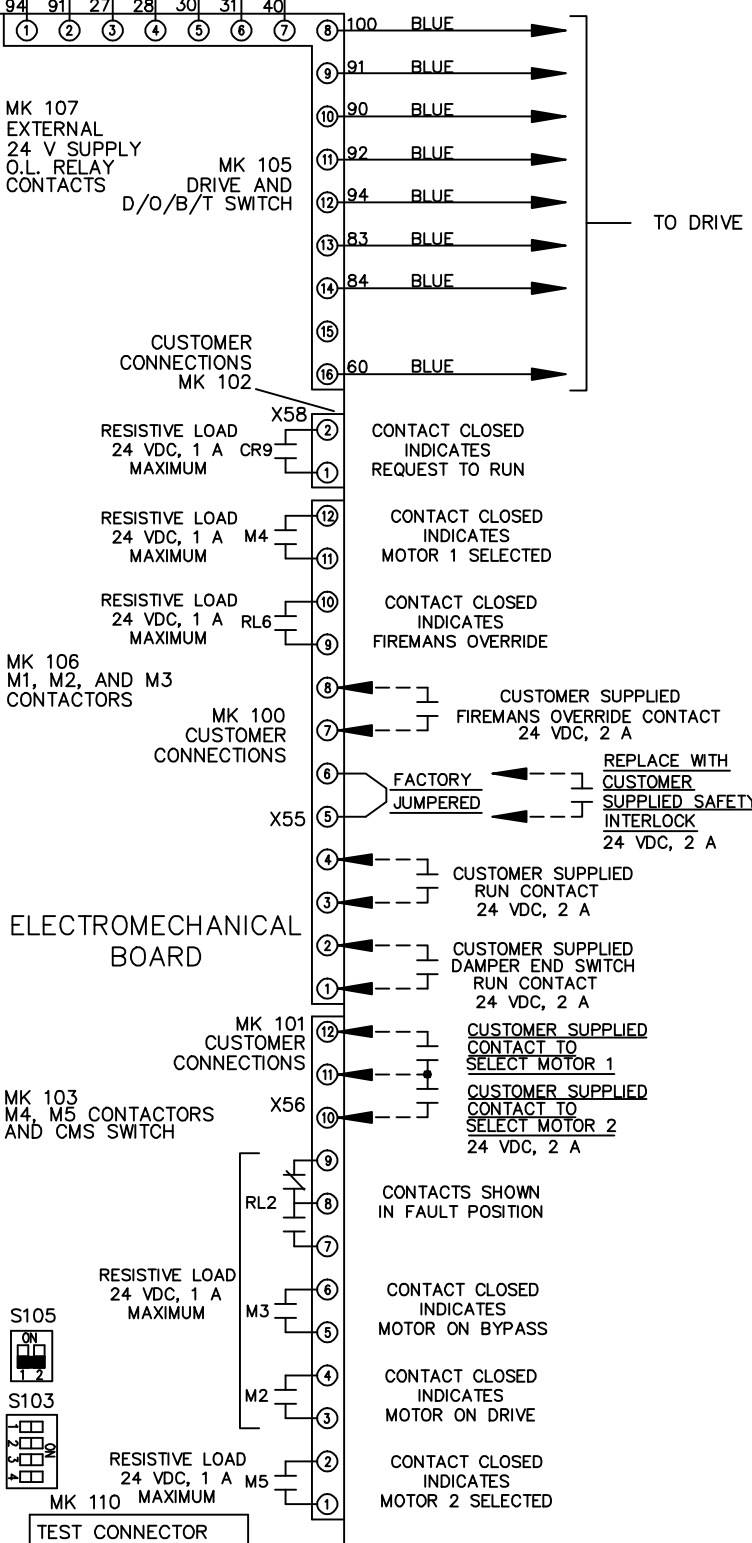


CONTACT SEQUENCE CHART FOR S2  
X INDICATES CONTACT CLOSED

| CONTACT | POSITION | MOTOR 1 | AUTO | MOTOR 2 |
|---------|----------|---------|------|---------|
| 11-12   |          | X       | X    |         |
| 13-14   |          |         |      | X       |
| 21-22   |          | X       |      |         |
| 23-24   |          |         |      | X       |



CUSTOMER CONNECTIONS X55, X56, X58  
 CLASS 2 POWER SOURCE  
 REQUIRED FOR FIELD CONNECTION  
 USE CLASS 1 CONDUCTORS  
 CONDUCTOR SIZE 28-14 AWG



MK 107 EXTERNAL 24 V SUPPLY O.L. RELAY CONTACTS  
 MK 105 DRIVE AND D/O/B/T SWITCH  
 MK 106 M1, M2, AND M3 CONTACTORS  
 MK 101 CUSTOMER CONNECTIONS  
 MK 103 M4, M5 CONTACTORS AND CMS SWITCH  
 MK 110 TEST CONNECTOR