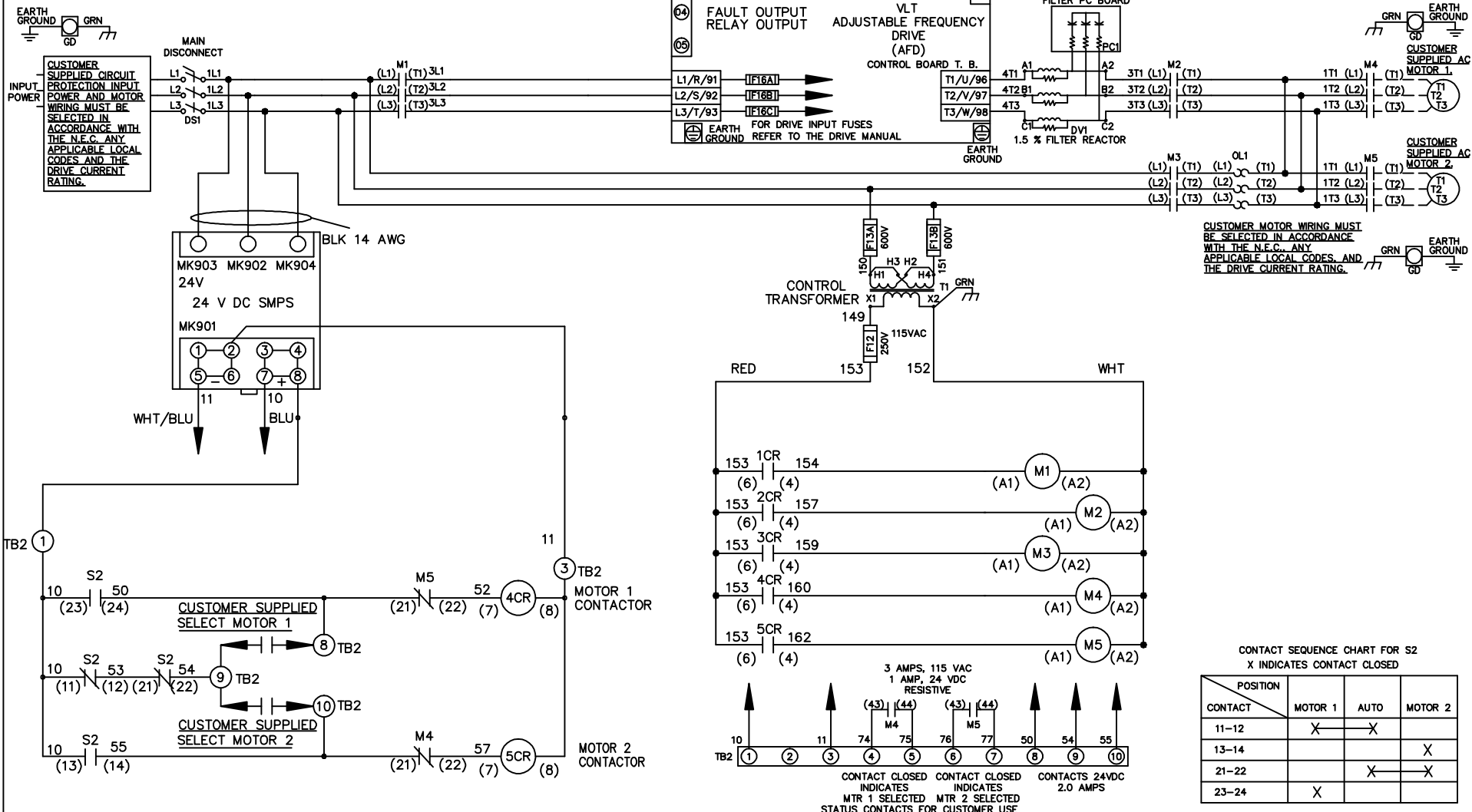


**WIRE COLOR SCHEME**

- BLACK - LINE VOLTAGE
- RED - AC CONTROL
- WHITE - AC GROUNDED
- WHITE - CIRCUIT CONDUCTOR
- BLUE - DC CONTROL
- WHT/BLU - DC CONTROL COMMON
- GREEN - CHASSIS GROUND



REV	ECN	DATE
A	SP08061	10/08

-NOTICE-

THIS DRAWING IS PROPRIETARY AND SHALL NOT BE COPIED OR ITS CONTENTS DISCLOSED TO OUTSIDE PARTIES WITHOUT THE WRITTEN CONSENT OF THE TRANE COMPANY

DRN JNW  
2/14/07

APR

NAME 230 VOLT,3C,MAIN DISC  
,DRIVE FUSE,ECB,FRAME C2N1\_  
,DVDT,CMS

MODEL

PAGE 1 OF 2

SIZE A

DWG NO. 174U8156

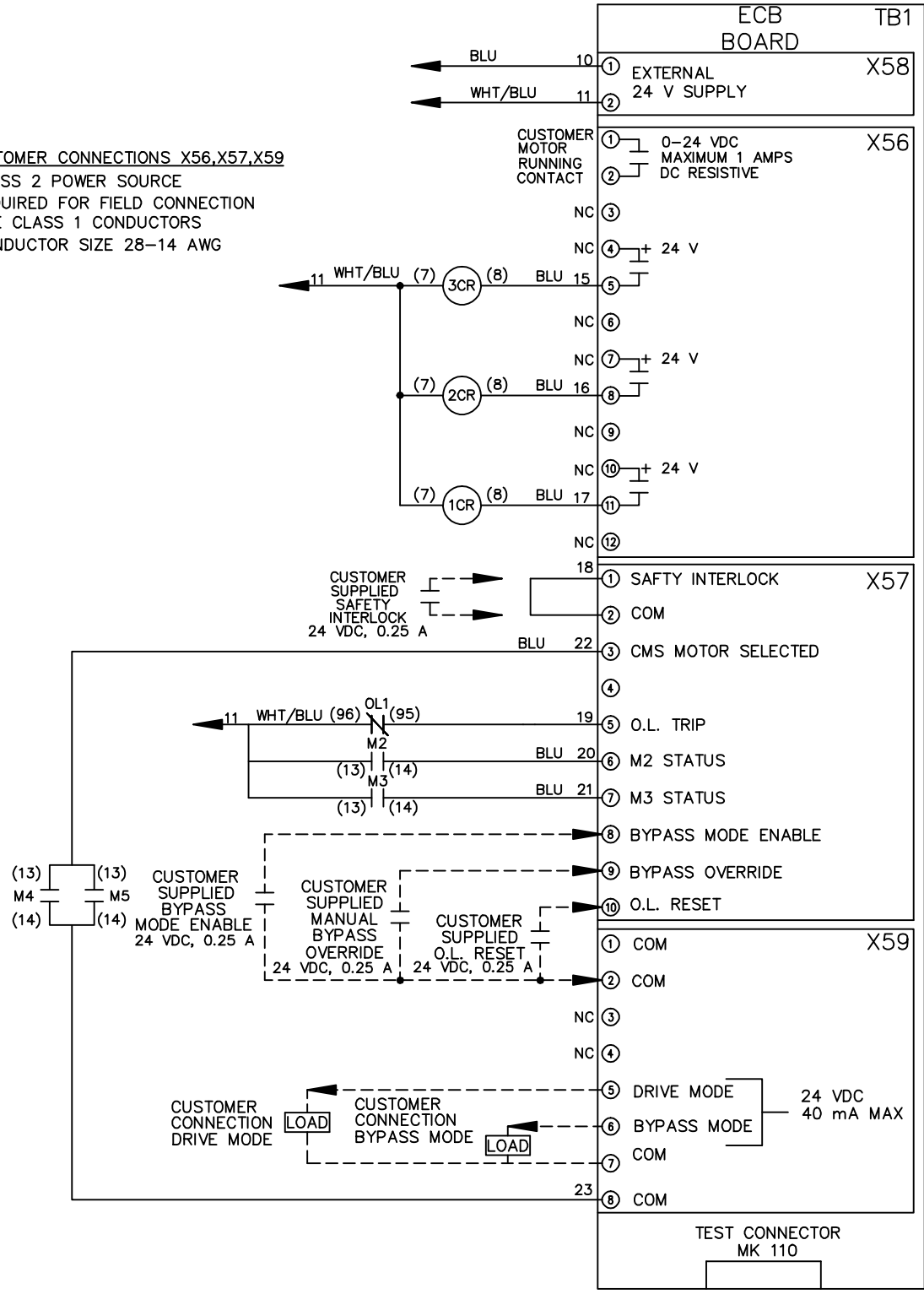
**THE TRANE COMPANY**  
A DIVISION OF  
AMERICAN STANDARD INC.

REV	ECN	DATE
A	SP08066	10/08

THIS DRAWING IS PROPRIETARY AND SHALL NOT BE COPIED OR ITS CONTENTS DISCLOSED TO OUTSIDE PARTIES WITHOUT THE WRITTEN CONSENT OF THE TRANE COMPANY

**CUSTOMER CONNECTIONS X56,X57,X59**  
 CLASS 2 POWER SOURCE  
 REQUIRED FOR FIELD CONNECTION  
 USE CLASS 1 CONDUCTORS  
 CONDUCTOR SIZE 28-14 AWG

- NOTICE -



DRN JNW  
 2/14/07  
 APR

NAME 230 VOLT, 3C, MAIN DISC  
 , DRIVE FUSE, ECB, FRAME C2N1  
 , DVDI, CMS  
 MODEL

PAGE 2 OF 2  
 SIZE A  
 DWG NO. 174U8156  
 THE TRANE COMPANY  
 A DIVISION OF  
 AMERICAN STANDARD INC.