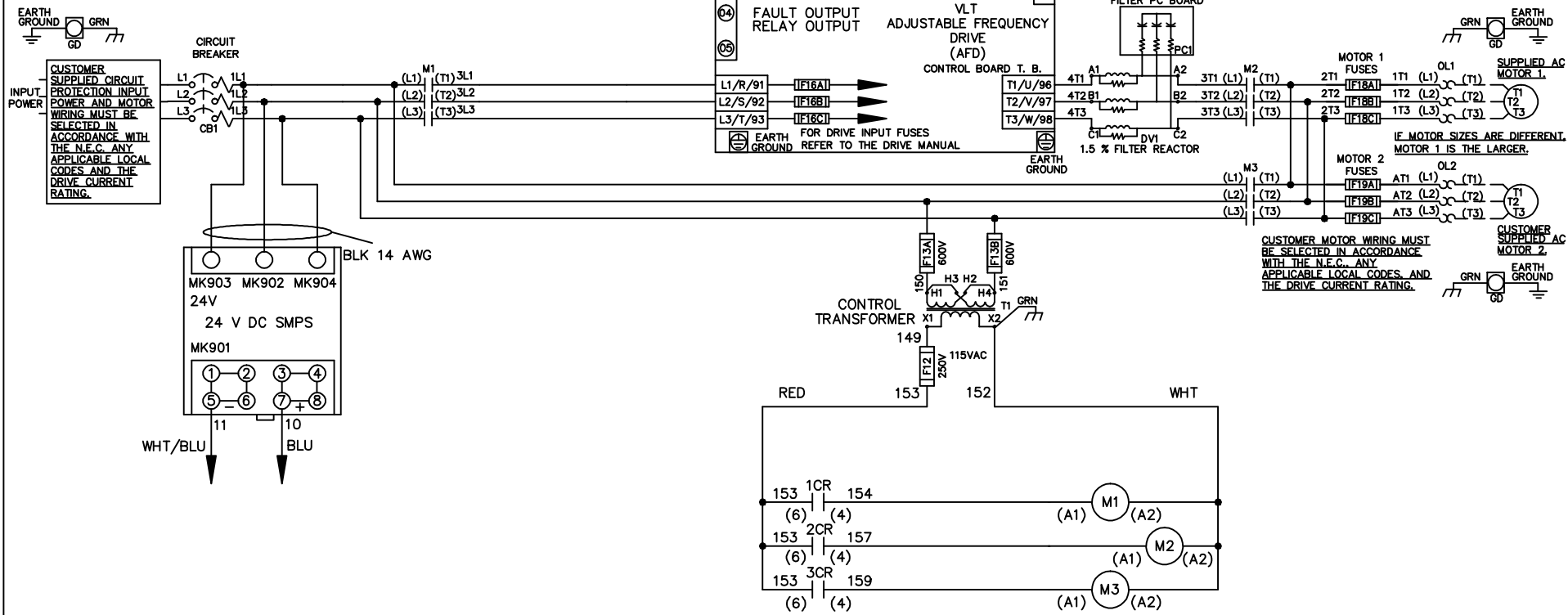


WIRE COLOR SCHEME	
BLACK	- LINE VOLTAGE
RED	- AC CONTROL
WHITE	- AC GROUNDED
	- CIRCUIT CONDUCTOR
BLUE	- DC CONTROL
WHT/BLU	- DC CONTROL COMMON
GREEN	- CHASSIS GROUND



A	SP08061	10/08
REV	ECN	DATE

-NOTICE-
 THIS DRAWING IS PROPRIETARY AND SHALL NOT BE COPIED OR ITS CONTENTS DISCLOSED TO OUTSIDE PARTIES WITHOUT THE WRITTEN CONSENT OF THE TRANE COMPANY

DRN JNW
 2/14/07
 APR

NAME 230 VOLT,3C,CB
 ,DRIVE FUSE,ECB,FRAME C2N1_
 ,DVDT,DUAL MTR

MODEL _____

THE TRANE COMPANY
 A DIVISION OF
 AMERICAN STANDARD INC.

PAGE 1 OF 2 SIZE A DWG NO. 174U8162

REV	ECN	DATE
A	SP08066	10/08

THIS DRAWING IS PROPRIETARY AND SHALL NOT BE COPIED OR ITS CONTENTS DISCLOSED TO OUTSIDE PARTIES WITHOUT THE WRITTEN CONSENT OF THE TRANE COMPANY

- NOTICE -

CUSTOMER CONNECTIONS X56,X57,X59
 CLASS 2 POWER SOURCE
 REQUIRED FOR FIELD CONNECTION
 USE CLASS 1 CONDUCTORS
 CONDUCTOR SIZE 28-14 AWG

DRN JNW
2/14/07

NAME 230 VOLT, 3C, CB
, DRIVE FUSE, ECB, FRAME C2N1
, DVDI, DUAL MTR

SIZE A

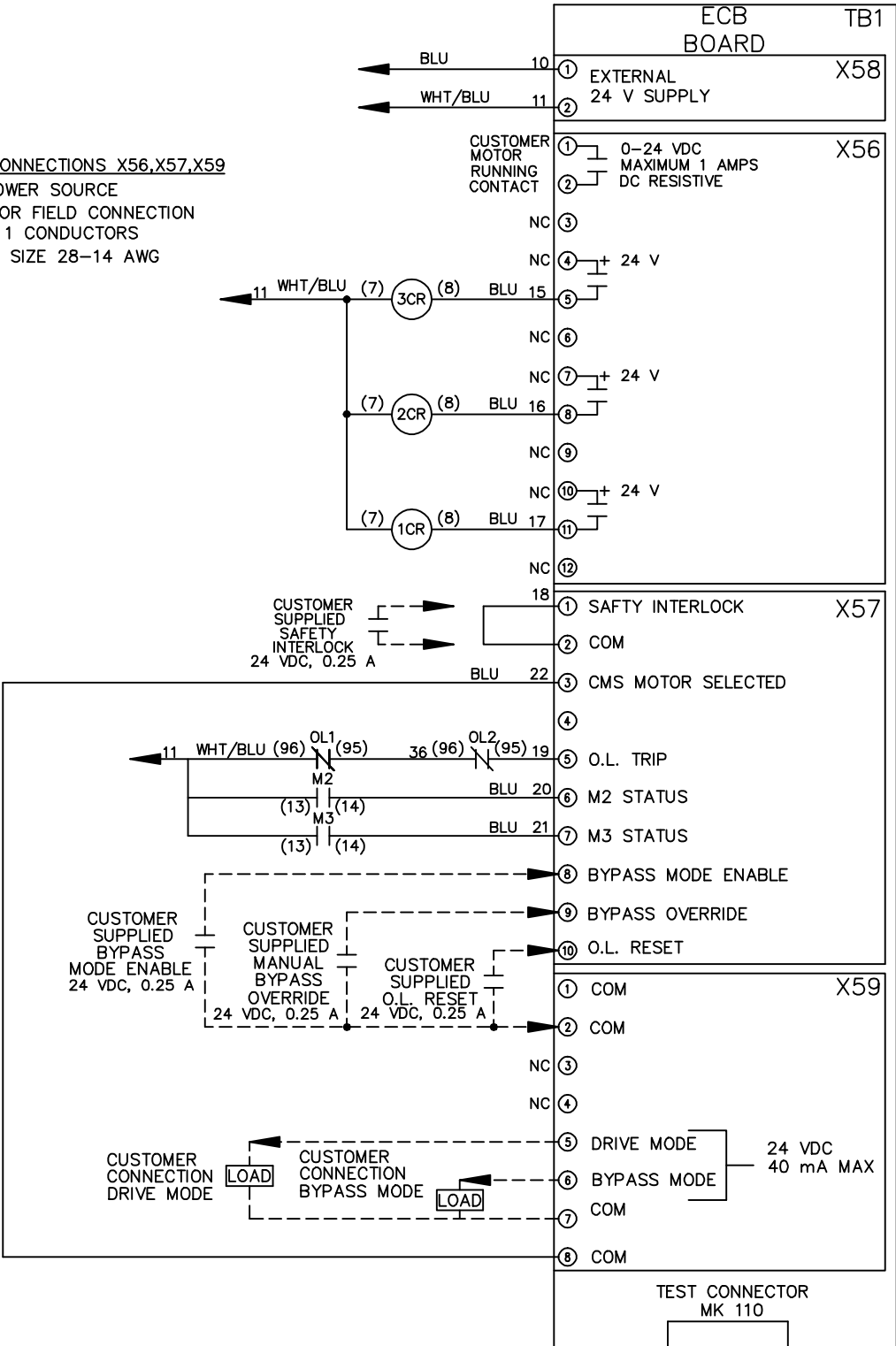
THE TRANE COMPANY
A DIVISION OF
AMERICAN STANDARD INC.

APR

MODEL

PAGE 2 OF 2

DWG NO. 174U8162



ECB BOARD TB1

① EXTERNAL 24 V SUPPLY X58

① CUSTOMER MOTOR RUNNING CONTACT X56
② 0-24 VDC MAXIMUM 1 AMPS DC RESISTIVE

① SAFETY INTERLOCK X57
② COM

① COM X59
② COM

⑤ DRIVE MODE 24 VDC 40 mA MAX
⑥ BYPASS MODE

TEST CONNECTOR MK 110