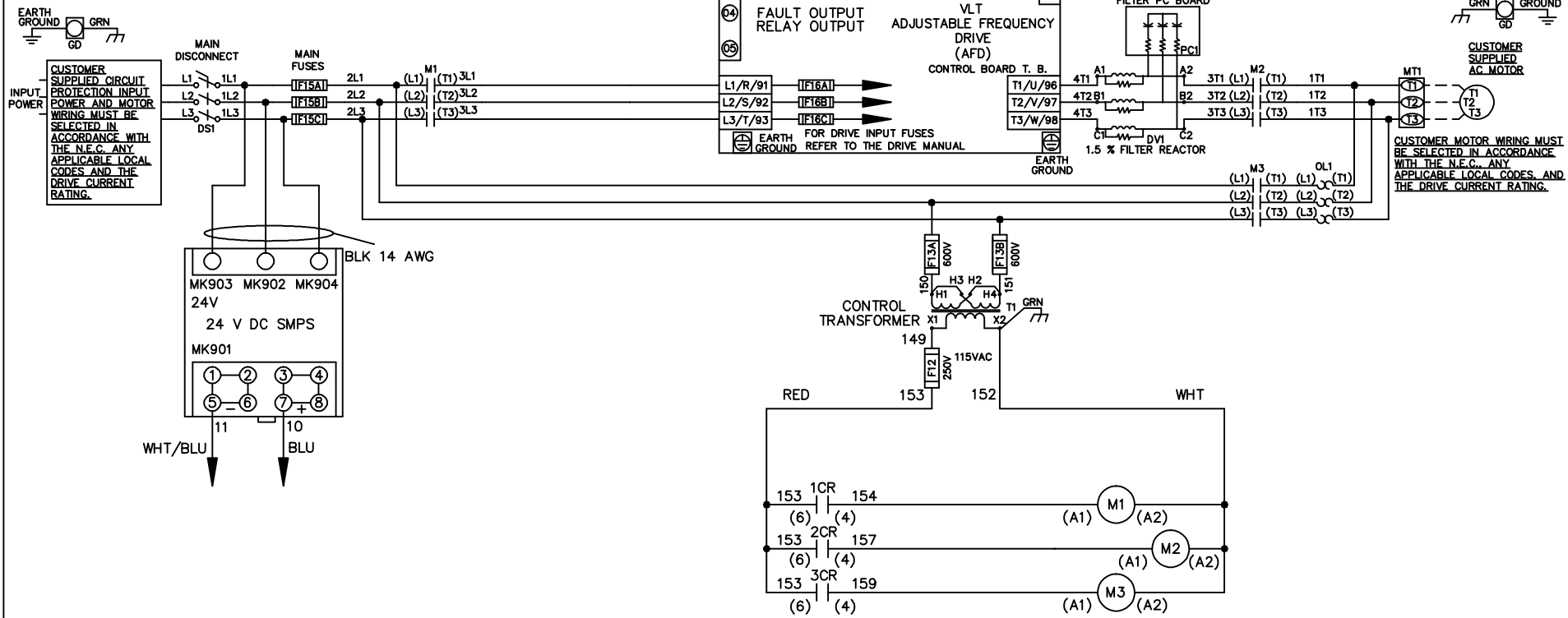


WIRE COLOR SCHEME
 BLACK - LINE VOLTAGE
 RED - AC CONTROL
 WHITE - AC GROUNDED
 WHITE - CIRCUIT CONDUCTOR
 BLUE - DC CONTROL
 WHT/BLU - DC CONTROL COMMON
 GREEN - CHASSIS GROUND



-NOTICE-

THIS DRAWING IS PROPRIETARY AND SHALL NOT BE COPIED OR ITS CONTENTS DISCLOSED TO OUTSIDE PARTIES WITHOUT THE WRITTEN CONSENT OF THE TRANE COMPANY

DRN JNW
 2/14/07

NAME 230 VOLT,3C,MAIN DISC
 ,MAIN FUSE,ECB,FRAME C2N1_
 ,DVDT,SINGLE MTR

THE TRANE COMPANY
 A DIVISION OF
 AMERICAN STANDARD INC.

REV	SP08061	10/08
ECN		DATE

APR

MODEL

PAGE 1 OF 2

SIZE A

DWG NO.

174U8176

REV	ECN	DATE
A	SP08066	10/08

THIS DRAWING IS PROPRIETARY AND SHALL NOT BE COPIED OR ITS CONTENTS DISCLOSED TO OUTSIDE PARTIES WITHOUT THE WRITTEN CONSENT OF THE TRANE COMPANY

CUSTOMER CONNECTIONS X56,X57,X59
 CLASS 2 POWER SOURCE
 REQUIRED FOR FIELD CONNECTION
 USE CLASS 1 CONDUCTORS
 CONDUCTOR SIZE 28-14 AWG

- NOTICE -

ECB BOARD TB1

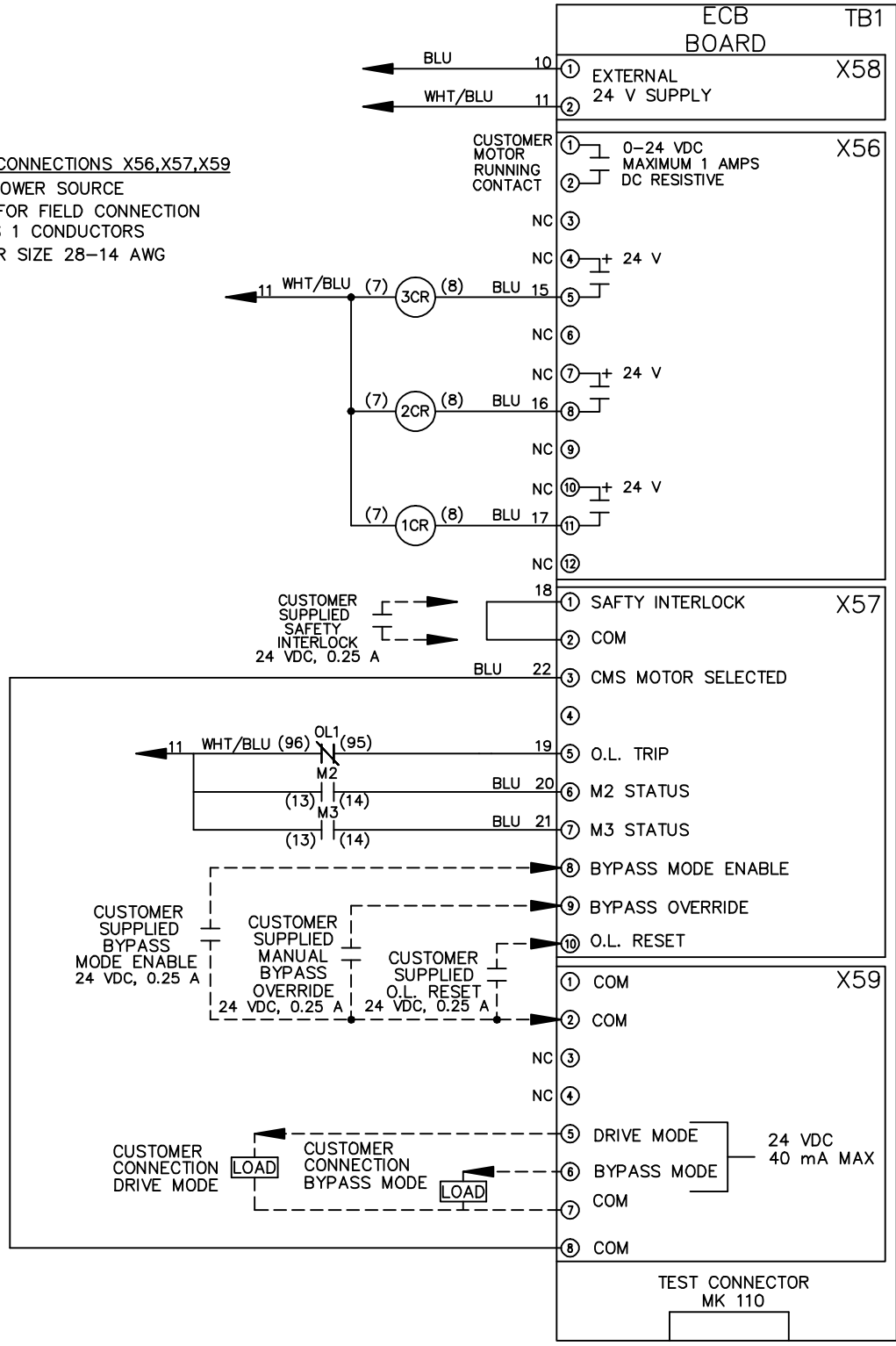
	X58
① EXTERNAL	
② 24 V SUPPLY	

	X56
① 0-24 VDC	
② MAXIMUM 1 AMPS	
③ DC RESISTIVE	
NC ③	
NC ④ + 24 V	
NC ⑥	
NC ⑦ + 24 V	
NC ⑨	
NC ⑩ + 24 V	
NC ⑫	

	X57
① SAFTY INTERLOCK	
② COM	
③ CMS MOTOR SELECTED	
④	
⑤ O.L. TRIP	
⑥ M2 STATUS	
⑦ M3 STATUS	
⑧ BYPASS MODE ENABLE	
⑨ BYPASS OVERRIDE	
⑩ O.L. RESET	

	X59
① COM	
② COM	
NC ③	
NC ④	
⑤ DRIVE MODE	24 VDC 40 mA MAX
⑥ BYPASS MODE	
⑦ COM	
⑧ COM	

TEST CONNECTOR
MK 110



DRN JNW
 2/14/07
 APR

NAME 230 VOLT, 3C, MAIN DISC
 , MAIN FUSE, ECB, FRAME C2N1-
 , DVDI, SINGLE MTR

MODEL
 PAGE 2 OF 2
 SIZE A
 DWG NO. 174U8176
 THE TRANE COMPANY
 A DIVISION OF
 AMERICAN STANDARD INC.