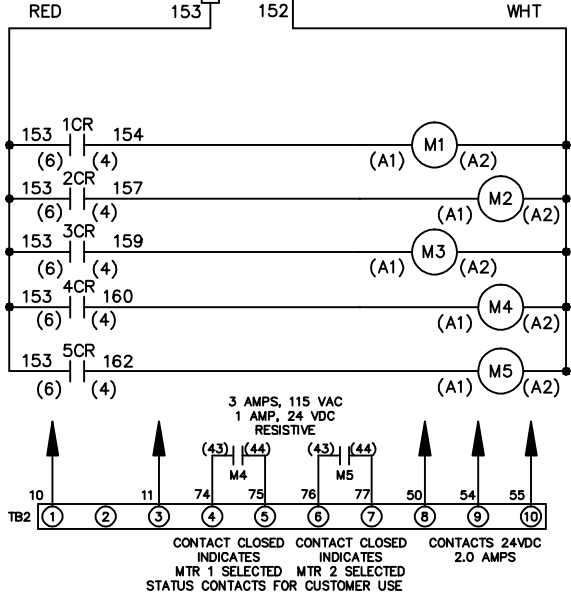
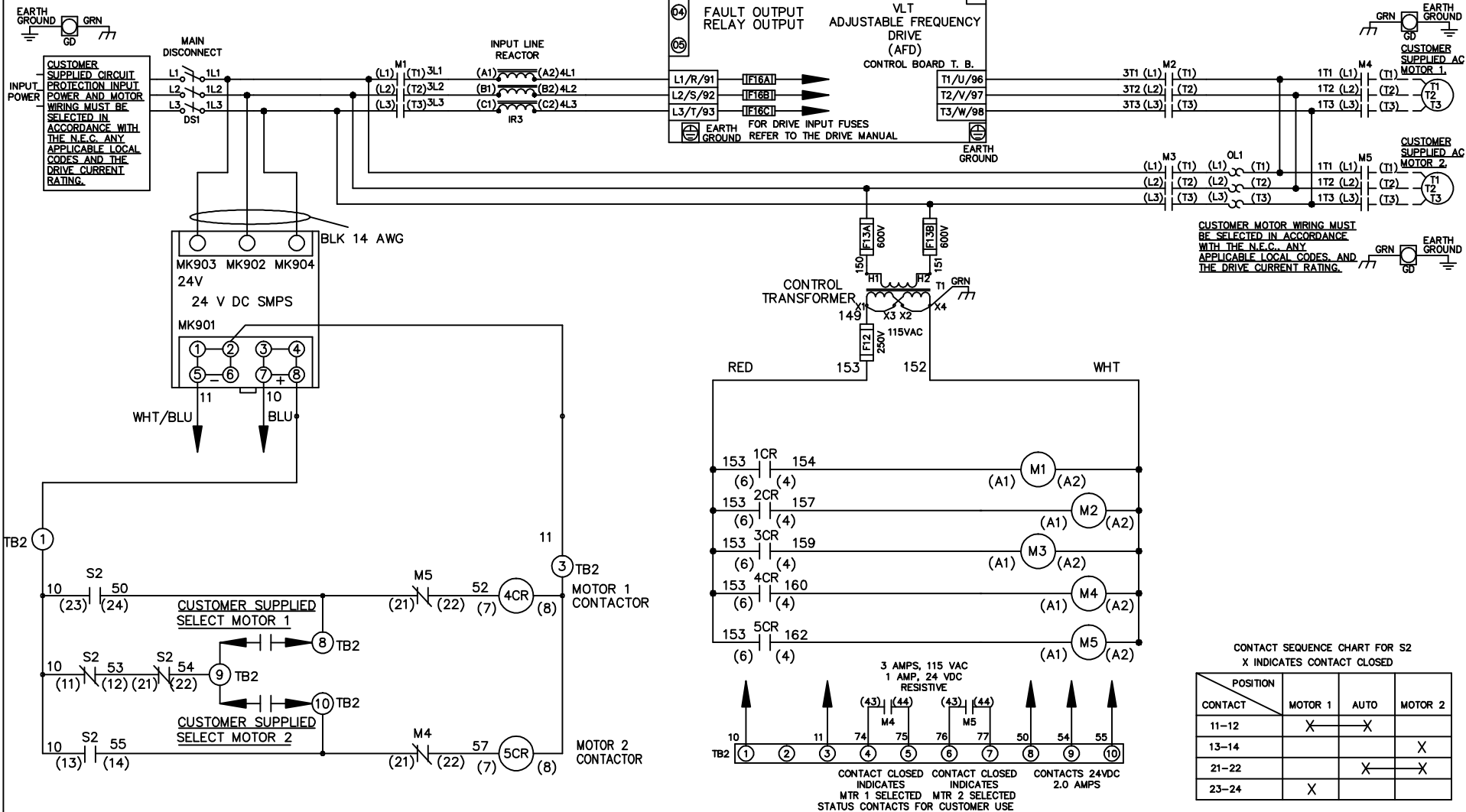


WIRE COLOR SCHEME

- BLACK - LINE VOLTAGE
- RED - AC CONTROL
- WHITE - AC GROUNDED
- WHITE - CIRCUIT CONDUCTOR
- BLUE - DC CONTROL
- WHT/BLU - DC CONTROL COMMON
- GREEN - CHASSIS GROUND



REV	ECN	DATE
A	SP08061	10/08

-NOTICE-

THIS DRAWING IS PROPRIETARY AND SHALL NOT BE COPIED OR ITS CONTENTS DISCLOSED TO OUTSIDE PARTIES WITHOUT THE WRITTEN CONSENT OF THE TRANE COMPANY

DRN JNW
2/14/07
APR

NAME 600 VOLT,3C,MAIN DISC
,DRIVE FUSE,ECB,FRAME C2N1_
,REACTOR,CMS

MODEL _____

THE TRANE COMPANY
A DIVISION OF
AMERICAN STANDARD INC.

PAGE 1 OF 2 SIZE A DWG NO. 174U8317

REV	ECN	DATE
A	SP08066	10/08

- NOTICE -
 THIS DRAWING IS PROPRIETARY AND SHALL NOT BE COPIED OR ITS CONTENTS DISCLOSED TO OUTSIDE PARTIES WITHOUT THE WRITTEN CONSENT OF THE TRANE COMPANY

DRN JNW
 2/14/07
 APR

NAME600 VOLT,3C,MAIN DISC
 ,DRIVE FUSE,ECB,FRAME C2N1
 ,REACTOR,CMS
 MODEL
 PAGE 2 OF 2
 SIZE A
 DWG NO. 174U8317

THE TRANE COMPANY
 A DIVISION OF
 AMERICAN STANDARD INC.

CUSTOMER CONNECTIONS X56,X57,X59
 CLASS 2 POWER SOURCE
 REQUIRED FOR FIELD CONNECTION
 USE CLASS 1 CONDUCTORS
 CONDUCTOR SIZE 28-14 AWG

