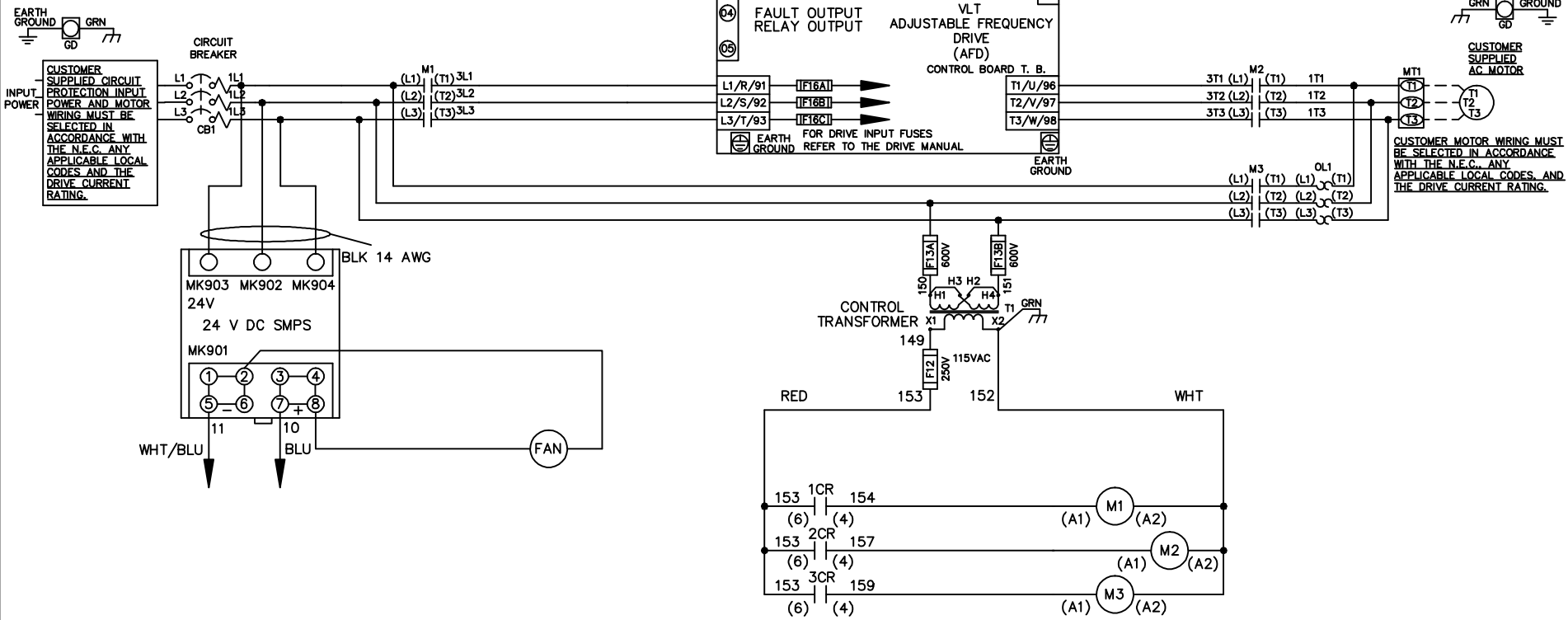


**WIRE COLOR SCHEME**  
 BLACK - LINE VOLTAGE  
 RED - AC CONTROL  
 WHITE - AC GROUND  
 WHITE - CIRCUIT CONDUCTOR  
 BLUE - DC CONTROL  
 WHT/BLU - DC CONTROL COMMON  
 GREEN - CHASSIS GROUND



-NOTICE-

THIS DRAWING IS PROPRIETARY AND SHALL NOT BE COPIED OR ITS CONTENTS DISCLOSED TO OUTSIDE PARTIES WITHOUT THE WRITTEN CONSENT OF THE TRANE COMPANY

DRN JNW  
2/14/07

APR

NAME 230 VOLT,3C,CB  
 ,DRIVE FUSE,ECB,FRAME C2N12  
 ,NO REACTOR & DVDT,SINGLE MTR

MODEL

PAGE 1 OF 2

SIZE A

DWG NO.

THE TRANE COMPANY  
 A DIVISION OF  
 AMERICAN STANDARD INC.

174U8494

REV	ECN	DATE
A	SP08061	10/08

REV	ECN	DATE
A	SP08066	10/08

THIS DRAWING IS PROPRIETARY AND SHALL NOT BE COPIED OR ITS CONTENTS DISCLOSED TO OUTSIDE PARTIES WITHOUT THE WRITTEN CONSENT OF THE TRANE COMPANY

**- NOTICE -**

**CUSTOMER CONNECTIONS X56,X57,X59**  
 CLASS 2 POWER SOURCE  
 REQUIRED FOR FIELD CONNECTION  
 USE CLASS 1 CONDUCTORS  
 CONDUCTOR SIZE 28-14 AWG

DRN JNW  
2/14/07

NAME 230 VOLT, 3C, CB

DRIVE FUSE, ECB, FRAME C2N12

THE TRANE COMPANY  
A DIVISION OF  
AMERICAN STANDARD INC.

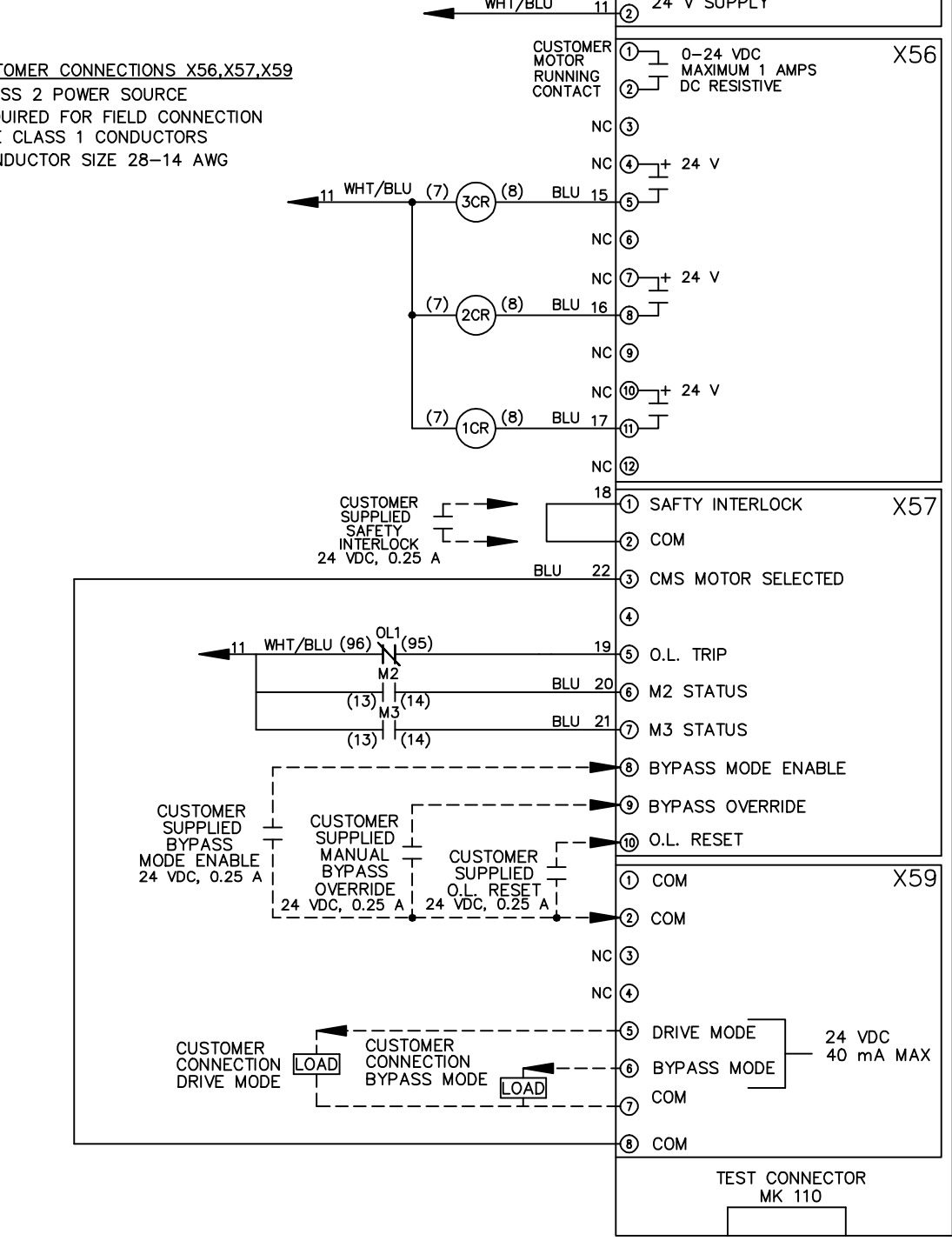
APR

MODEL , NO REACTOR & DVDI, SINGLE MTR

PAGE 2 OF 2

SIZE A

DWG NO. 174U8494



**ECB BOARD TB1**

① EXTERNAL 24 V SUPPLY  
 ②

CUSTOMER MOTOR RUNNING CONTACT  
 ① 0-24 VDC MAXIMUM 1 AMPS DC RESISTIVE  
 ②

NC ③

NC ④ + 24 V

NC ⑥

NC ⑦ + 24 V

NC ⑨

NC ⑩ + 24 V

NC ⑫

① SAFTY INTERLOCK X57

② COM

③ CMS MOTOR SELECTED

④

⑤ O.L. TRIP

⑥ M2 STATUS

⑦ M3 STATUS

⑧ BYPASS MODE ENABLE

⑨ BYPASS OVERRIDE

⑩ O.L. RESET

① COM X59

② COM

NC ③

NC ④

⑤ DRIVE MODE

⑥ BYPASS MODE

⑦ COM

⑧ COM

TEST CONNECTOR MK 110

24 VDC 40 mA MAX

CUSTOMER SUPPLIED SAFETY INTERLOCK  
 24 VDC, 0.25 A

CUSTOMER SUPPLIED BYPASS MODE ENABLE  
 24 VDC, 0.25 A

CUSTOMER SUPPLIED MANUAL BYPASS OVERRIDE  
 24 VDC, 0.25 A

CUSTOMER SUPPLIED O.L. RESET  
 24 VDC, 0.25 A

CUSTOMER CONNECTION DRIVE MODE

CUSTOMER CONNECTION BYPASS MODE

LOAD

LOAD